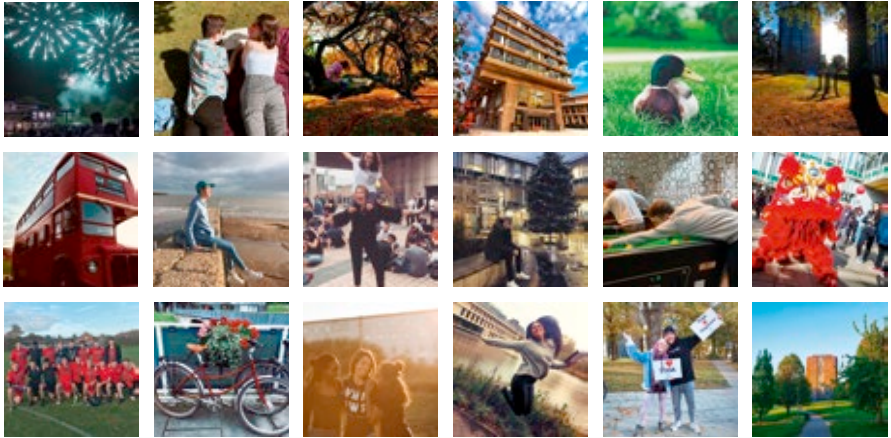
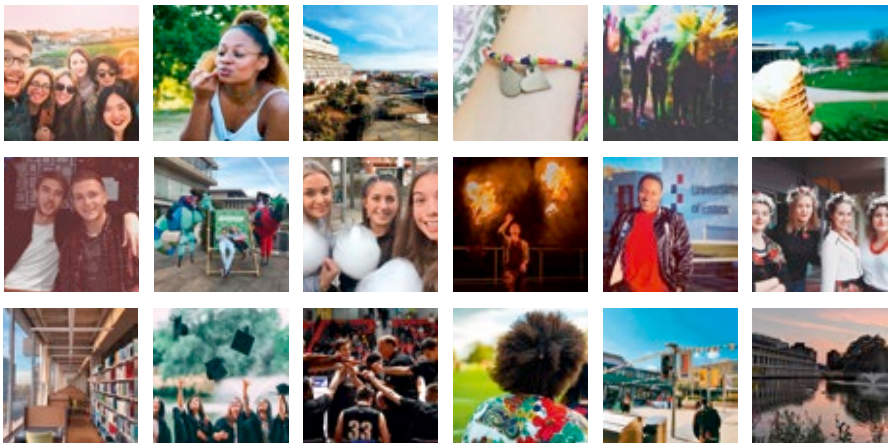


University of Essex



ESSEX

UNIVERSITY OF THE YEAR **THE AWARDS** 2018



Undergraduate Prospectus 2020

CHOOSE YOUR ADVENTURE

Whether you've ordered this prospectus from our website and know all about Essex, or picked it up at an event and don't know much about us at all, the parts that will interest you will depend on the things you like.

It goes without saying that the main thing to check out is your ideal area of study, which can be found by browsing our subject pages on page 74.

But after you've spent some time finding out all that your subject has to offer, then what? Essex has lots of amazing opportunities for everyone so why not take a look at the below and follow the path of the one that speaks to you.

At one with nature

Well Essex is the perfect setting for an outdoors explorer like you! With some glorious countryside surroundings and some lovely coastal spots, you'll be in your element. See page 62 to find out more about Essex life.

Night owl

Whether it's watching a film in Cine10 or singing at the top of your lungs to Mr Brightside in Sub-Zero, our Students' Union has lots of opportunities for a great night out. Take a look at page 32 to see what our SU have to offer.

Wanderlust

There's plenty of ways to satisfy your adventurous streak at Essex! You can study abroad for a term, a year or have an overseas experience during the summer. See page 42 to find out about the opportunities to see the world.

Busy bee

Having hobbies and joining sports teams is a great way to keep a busy schedule and meet new friends. At Essex we have over 100 societies and 40 sports clubs to choose from. Go to page 34 to find out more about what's on offer.

None of the above? Not to worry, everyone's Essex experience is unique and there is something for everyone!



YOUR ESSEX, YOUR WAY

Animal kingdom 10

Liam Knapp-Bates explains how our volunteering programme (VTeam) shaped his future career as a Zookeeper

Healthy business 12

Philip Kasumu, founder of health app Lyle, tells us how Essex Business School changed his outlook

Read all about it 14

Jordan Milne found her ideal career as a producer for Sky News. She explains how Essex shaped who she is today

We are Essex 16

Our students, staff and alumni come from all over the world, each with their own unique story to tell. Here are some stories from our inspirational students

IT'S ALL HERE FOR YOU

Facilities 20

Discover our brand new labs, sports facilities and more...

Colchester Campus 24

Southend Campus 28

Students' Union 32

Sport 34

Be the best or just get off the sofa – there's something sporty for everyone at Essex

Outside the classroom 38

Research 40

Study abroad and learn a language 42

Travel and learn new languages the Essex way

Careers 44

Employability at Essex; earn money, build your CV and kickstart your career

Support services 46

How we can help

International students 48

We are the world in one place

WELCOME HOME

Your new home 52

Essex living 62

Accommodation 54

APPLYING TO ESSEX

Open Days 66

Fees and funding 72

How to apply 68

SUBJECTS

All our subjects and courses 74

Essex Pathways 172

Our Year 0 (foundation year) courses

EXTRA INFO

Keep in touch 178

Travel information 184

UK partner institutions 180

Important information 186

Index 188



UNIVERSITY OF THE YEAR

THE AWARDS
2018

Rated Gold

Teaching Excellence Framework 2017



Our top rankings demonstrate we put equal emphasis on teaching and research



Top 15

for overall student satisfaction

NSS 2018, English mainstream universities*



Top 20

for the most international student community

Times Higher Education World University Rankings 2018



Our academics inspire a new generation of experts – which includes you





YOUR ESSEX, YOUR WAY

At Essex you're more than a student, you're a member. Someone with genuine licence to shape what we do.

Read our students' stories about life at Essex and meet the alumni we think are inspirational. These are the people who defy convention, stop to ask why and never give up. Read on and perhaps you'll start to see how you can make our Essex, your Essex.

Our students make us what we are. When we say Essex dares to be different, we can only make this claim because our students consistently choose to live life their own way.

Choose Essex for an education that's focused on you. Study here for more than a great degree. Learn to value opinions that differ and develop the confidence to make your own decisions.



ANIMAL KINGDOM



Liam Knapp-Bates explains how our volunteering programme (VTeam) shaped his future career as a Zookeeper.

Get stuck in

From the day he came to an Open Day, Liam felt like Essex was home, "I was really impressed with the wide variety of facilities provided on campus and how beautiful the lake area was", making his decision to study at Essex a pretty easy one. After joining the University as a student, Liam was sure to get involved with all of the opportunities Essex had to offer and advises all future students to "sign up to a hundred clubs or societies (you'll probably only attend one, two if you're optimistic) and get involved with everything going on on campus as I guarantee you'll find something happening pretty much every day."

It was through his go-getter attitude that he landed his role at Colchester Zoo, "I actually secured the position through Essex's volunteering program (VTeam) in my final year of study so I could volunteer at the Zoo at least one day a week".

Studying science at Essex, and beyond

Liam was a keen scientist from a young age "I always liked science growing up and didn't really know what I wanted to do with it...in particular biology was always my favourite". The diverse modules available in the BSc Biological Sciences course captured his attention and allowed him to explore so many different aspects of biology, "I was really interested in gaining a wider breadth of knowledge in biology with the hope of focusing on specific areas in the coming years".

His favourite part of the course was the lab work, "I conducted so many different experiments and learnt so much about the vocation of science research through them". Another memorable part of his studies was the field trips he attended as part of his degree. "The trip to Indonesia in my second year to participate in coral reef surveys was definitely a highlight and provided a good balance to the lab work back at the university". "When it comes to the field trips, make sure you go on as many as you can as they're invaluable and it's nice to get out of the lab sometimes!"

Monkey Business

Since graduating from Essex, Liam has been participating in an internship scheme at Colchester Zoo as a full time Zookeeper, "I'm now in month 11 and essentially have been training to become a fully-qualified zookeeper, with the aim to gain full time employment upon completion of the scheme". He claims studying at Essex proved invaluable for him whilst trying to gain a job through providing a variety of skills. "It was only through the university programme that I had the chance to participate in the zookeeper internship and so far I have had the best time...I still can't quite believe I get to look after so many amazing animals as my job!"

HEALTHY BUSINESS

You don't have to wear a suit to be big in business. Philip Kasumu, founder of health app Lyle, tells us how Essex Business School changed his outlook.

New perspective

Before he started his BA Accounting and Management Philip believed a career in business meant one thing. "I thought I'd end up in a suit working in London." However, his entrepreneurial spark was kindled by the Essex Business School. "It's where I discovered who I am. The modules I studied challenged me and made me look at business – and the world – a lot differently."

Another source of inspiration was the Students' Union Entrepreneurial Society. Philip recalls an event with the CEO of coffee shop chain Paddy and Scott's. "He shared with us how he struggled in school and had many failed businesses until this coffee idea. The moral of his story was to never give up. That has stuck with me to this day."

A passion for business and health

Whilst at Essex, Philip joined the gym. "In between studying very hard for my degree (honest!) I would train at the gym every day." He noticed that weight-loss apps were typically targeted at women, while health programmes for men usually centred on getting ripped and crash dieting. Philip wanted to create something that would help men lose weight in a fun and sustainable way. "I funnelled my passion for health and wellness and business into what would become Lyle."

Working with an engineer, a dietician and a designer, Philip launched Lyle, an iPhone app that helps men lose weight. Lyle is an AI assistant that acts like a personal trainer, advising users on goals, devising tailored meal plans – and even shopping for the right ingredients to save users time!

Made in Manhattan – via Essex

Philip's work on Lyle has taken him across the Atlantic and now he's based in New York. But he has fond memories of university life. "Essex is where I met some of my closest friends. It's where I made the transition from an overly excited teenager to 'grown-up'. It's where I developed discipline through my training and studying." Keen to share the secrets of success, Philip also now hosts Startup Handmedowns, a podcast where he interviews the brains behind the most dynamic new businesses.

If you're interested in launching your own business whilst studying at Essex, take a look at our award-winning crowdfunding platform Click, which has funded around 200 student projects.

click.hubbub.net



READ ALL ABOUT IT

Jordan Milne, BA History graduate, found her ideal career as a producer for Sky News. She explains how Essex shaped who she is today.

Finding a nose for news

Jordan wouldn't describe her university experience as typical. "I completed my first year at a different university and then moved straight into the second year at Essex. It was the most terrifying thing I've ever done!"

She soon found that Essex was the right place for her. "I studied History. I always knew I wanted to tell people's stories – and I was fascinated by the criminal justice system which is why I decided to study the history of crime at Essex."

Following a Masters in Journalism, Jordan started working at Sky news. "I didn't necessarily want to work in TV, but I fell into it and it's been a few years now! I'm the Home Affairs and Crime Specialist Producer for Sky News. For me, it's absolutely a dream job!"

Criminal mind

Jordan produces live news and pre-recorded investigations, working closely with Sky News correspondents Mark White and Martin Brunt.

While she covers everything from court cases, to terrorist attacks, to changes in the judiciary, Jordan is deeply proud of her coverage of the UK prison system. "Visiting prisons and getting to see the frontline, as it were, was mind blowing. We interviewed one prisoner about the availability of drugs and how that impacts life in the jail."

Once a history nerd, always a history nerd

When Jordan looks back over her time as a student, she remembers a visit to the British Library as a special highlight. "My dissertation was on the cultural life of Robert Louis Stevenson's *Strange Case of Dr Jekyll and Mr Hyde*. I had the chance to examine the original play. There were pencil notes in the margin, so being the history nerd that I am, that was something else!"

But for Jordan, there's more to history than the fun of delving through dusty archives. "Working on your assignments, you have to be able to cope with deadlines. Now in my job, I have deadlines of anything from 24 hours to 10 minutes and I can deal with that because I learnt how to during my degree."

Jordan's time at Essex helped launch her career, gave her room to explore her love of history – and still plays a big part in her life. "Essex shaped who I am entirely! I still live with someone I met on my history course now – we're history nerds together!"

Your Essex experience stays with you. Develop the skills you need for your career – find out more about how we support your plans for life after Essex.

[essex.ac.uk/life/careers](https://www.essex.ac.uk/life/careers)

WE ARE ESSEX

Everyone has a different background, a different experience, a different perspective. Our students, staff and alumni come from all over the world, each with their own unique story to tell. Here are some stories from our inspirational students.

To read more visit essex.ac.uk/we-are-essex



Abigail - BA History

"I wouldn't choose to go to any other uni"

"I'm really happy here; everything has been amazing. Once I was at Essex it was actually very easy to make friends. Essex is a student-friendly university and everybody is really nice and the societies are a really good way to meet new people. I wouldn't choose to go to any other uni. It's so cliché but I literally just love Essex!"



Taran - VP Welfare and Community

"One of my biggest goals this year is to let students know what support there is"

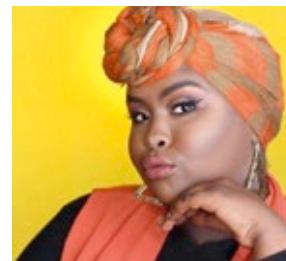
"I come from a really small town, so it was a bit of a change to come to such a diverse and politically active university. I'd never been able to be part of an actual LGBT+ community before, so I really got stuck in. Now I've been elected VP Welfare, which I'm really excited about. One of my biggest goals this year is to let students know what support there is available to them. I want to use my own struggles with mental health to empower myself and everyone else who struggles. I think everything in your life is a tool you can use to empower yourself."



Emma - MA Advertising, Marketing and the Media

"There are just so many incredible opportunities at Essex"

"I've explored a lot of new things, made some amazing friends, and really had an adventure. There are just so many incredible opportunities at Essex and I come from a tiny town where not much happens, so I really dived in. In my time here I've studied Arabic through Languages for All, started two new societies, and volunteered as the SU's Open Portfolio Officer. I think my favourite experience of all was studying abroad for a year in the US, though; it was a truly incredible, eye-opening experience."



Asha - VP International

"My advice would be get involved as soon as possible; even before you get your results"

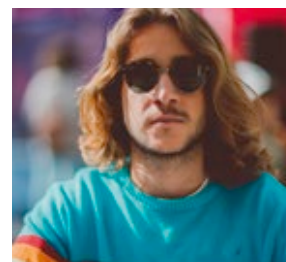
"I was born in Norway, but my parents are Somali, and growing up I noticed that I looked different to everyone else. My goal is to make everyone feel comfortable here at Essex. My advice would be to get involved as soon as possible; even before you get your results you can connect with your new course-mates and flatmates on Facebook."



Tanki - SU President

"The SU belongs to all students"

"Being able to work towards tackling the issues that students care about, like cost of living, accommodation and mental health, really makes my job worthwhile. The SU belongs to all students, and they're empowered to make change within it. Without students, the University wouldn't be here. I'm really excited to get into it and make my own mark on the role. I think this Students' Union has so much potential!"



Antonio - BA Philosophy and Politics

"Next year I'll be going on my Year Abroad to Tokyo. From the beginning I knew I wanted to go to Asia"

"Next year I will be going on my Year Abroad to Tokyo. I've always wanted to go to Asia. I really enjoyed coming to Essex. I had no connections at the University; I wanted to get out of my shell and meet new people. During Freshers' Week I didn't know anyone, so it wasn't that much of a party week, but I came down to the SU Bar, grabbed a drink and found someone to speak to. That's how I met one of my closest friends."



**IT'S
ALL
HERE
FOR
YOU**

**Libraries.
Lecture halls.
Robot arenas.
Cats*.
Let's show
you around.**

***okay, only one cat.**

Our facilities offer you the opportunity to pursue your interests and meet people from across the University. Want to make films? We have professional-grade studios and editing suites. Want to pump iron? Take advantage of our first-class gym. Want to take some time out? See a new blockbuster at our on-campus movie theatre, Cine10. Check out what's on our campuses and if you have any questions, email us at admit@essex.ac.uk. But before you ask - he's called Pebbles and he lives on our Colchester Campus. Follow his adventures at facebook.com/EsexCampusCat



OUR FACILITIES

The latest addition to our Colchester Campus is our new **STEM Centre**. It includes a 180-seat wet lab for our School of Life Sciences and a 150-seat IT-rich exploratory learning space to enable collaboration between students across our Faculty of Science and Health.



The **Silberrad Student Centre** offers 24/7 access to a combination of IT-rich areas and study pods for group work. The Centre is also home to our Student Services Hub – your one-stop-shop for finance and support services.



Reflecting our commitment to responsible business practice in both teaching and research, **Essex Business School** in Colchester is a zero carbon building. It features a winter garden, café and lots of breakout spaces for post-lecture discussions.



Our campuses are growing and making more room for you. Here's a mere snapshot of what we offer.

Our brand new **Sport Arena** has 1,655 seats and international standard facilities suitable for staging televised sporting events. The Arena contains eight badminton courts, three basketball courts, three netball courts, five volleyball courts and two futsal courts.



We have state-of-the-art **teaching facilities for healthcare students**, including a functioning hospital ward with robot patients that can simulate a range of medical conditions. The new space also includes six consultancy rooms which are equipped with cameras to be used for practice consultations.

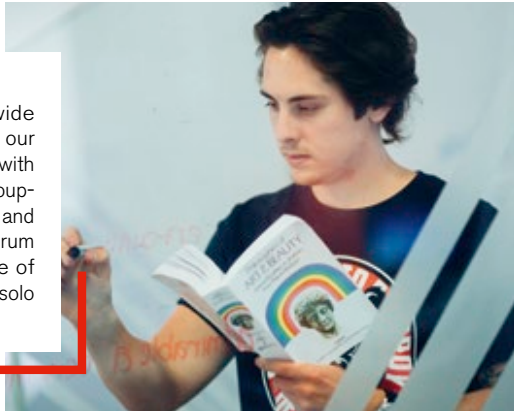


Our **Albert Sloman Library** in Colchester overlooks the lakes and houses some of the UK's finest collections, providing fascinating insight into Latin America, Russia and Eastern Europe. At Southend, the **Forum Library** is a vibrant, contemporary space with outstanding learning facilities.



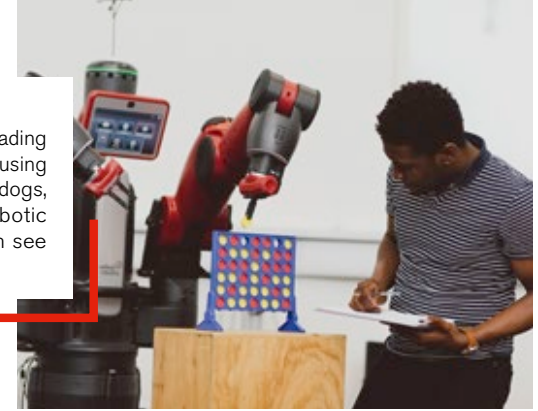
Innovative learning spaces

You have easy-access to a wide range of study facilities across our campuses. In Colchester, work with your friends in our interactive group-working spaces, the Limehouse and the Orangery, and our iconic Forum in Southend houses a mixture of pods and open-plan spaces for solo or group work.



Robotics arena

We have one of the world's leading robotics research facilities, housing robotic wheelchairs, spiders, dogs, football players, fish and robotic aircraft, which you can often see flying around the arena!



Theatres

The Lakeside Theatre on our Colchester Campus and the Clifftown Theatre in Southend showcase student and professional productions. Whether you're a keen actor, interested in production, or just enjoy an evening at the theatre this provides an excellent creative space for students with an interest in the arts.



Multi-Faith Chaplaincy Centres

Essex is the world in one place, so we bring together a mix of faiths and beliefs from across the globe. Our multi-faith spaces at Colchester and Southend are places to practice or explore faith, either on campus or by connecting staff or students to a local place of worship.

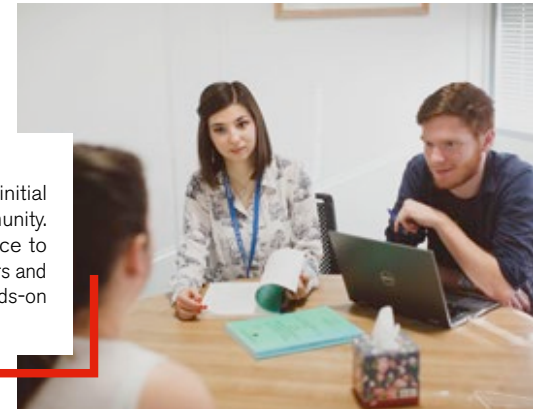
Interpreting lab

Our interpreting training lab can be used to interpret conferences of up to 20 people. You can use the lab as part of your studies, giving you the tools you need to become an expert interpreter.

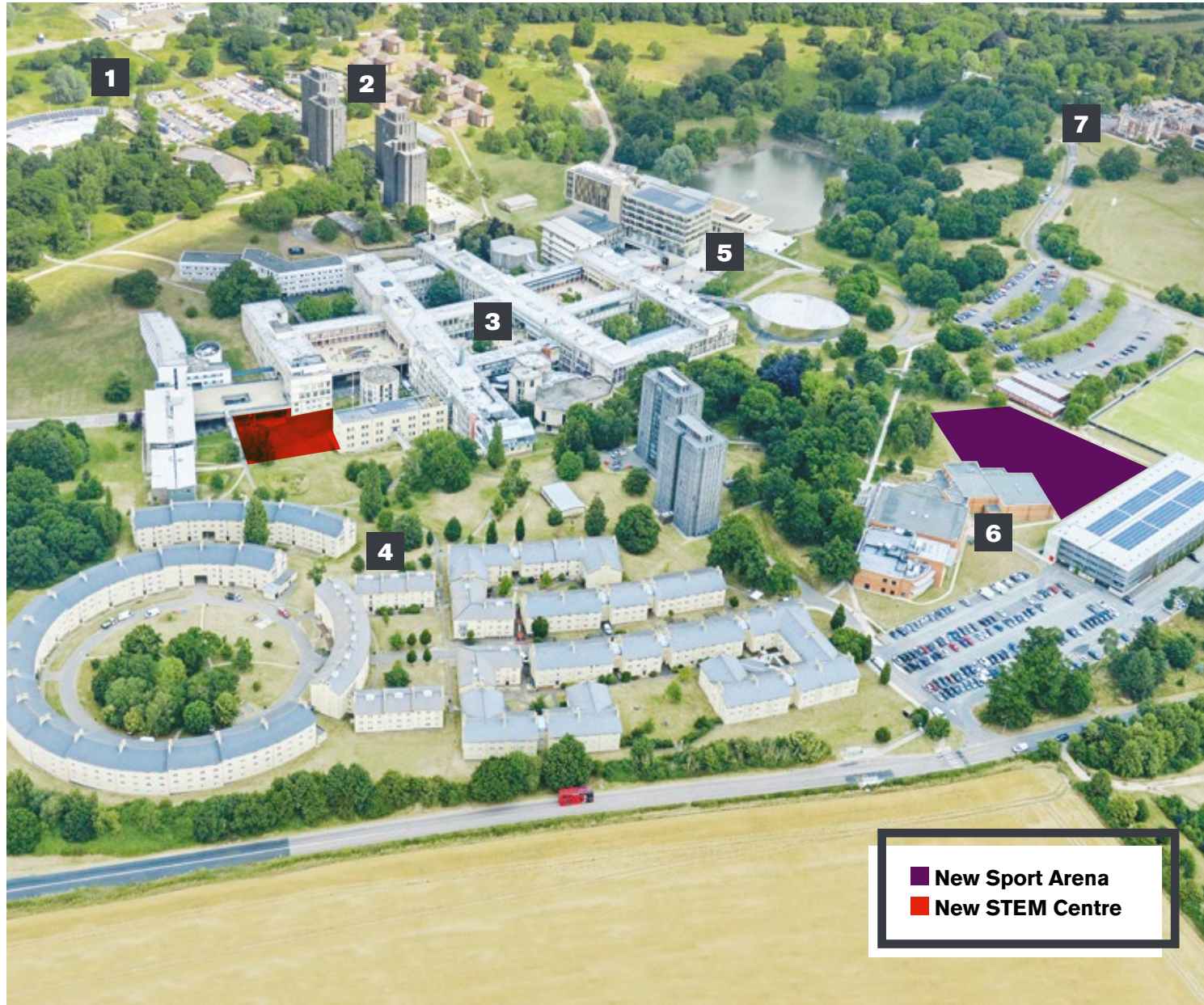


Essex Law Clinic

Essex Law Clinic offers free initial legal advice to the local community. Law students have the chance to work alongside practising lawyers and advises real clients to gain hands-on experience.



OUR COLCHESTER CAMPUS



■ New Sport Arena
■ New STEM Centre

- 1 North-west campus**
 - University Quays accommodation (10-minute walk from central campus)
 - The Meadows accommodation (5-minute walk from central campus)
 - Essex Business School
 - Day Nursery
 - Knowledge Gateway
- 2 North campus**
 - North Towers accommodation
 - The Houses accommodation
 - Health Centre
 - Tony Rich Teaching Centre
 - The North Teaching Centre
- 3 Central campus**
 - Lecture Theatre Building
 - Academic departments
 - Lecture and seminar rooms
 - Students' Union
 - Bars, cafés and restaurants
 - Shops, banks and Post Office
 - Information Centre
- 4 South campus**
 - South Towers accommodation
 - South Courts accommodation
 - Brand new STEM Centre
- 5 East campus**
 - Ivor Crewe Lecture Hall
 - Silberrad Student Centre and SU Creative Studios
 - Albert Sloman Library
 - Lakeside Theatre and Café
 - Waterstones bookshop
 - Parkland and lakes
- 6 South-east campus**
 - Tennis courts
 - Synthetic turf pitch
 - Sports Centre and Gym
 - Brand new Sport Arena
- 7 Wivenhoe Park**
 - Wivenhoe House Hotel
 - Edge Hotel School
 - ESCALA Space
 - Campus allotment
 - Sports pitches and parkland

OUR COLCHESTER CAMPUS

Often described as the world in one place, our Colchester Campus is home to students and staff from over 130 countries; bringing people together people from across the globe.

Located within Wivenhoe Park, the Campus is surrounded by beautiful landscapes and wildlife, providing the perfect place to study and relax. The campus itself is a vibrant hub of education, friendship and life.

Things to do

Whether you want to catch a film at the cinema, watch a show at the theatre, have a BBQ by the lake, dance the night away in our nightclub or even visit our theatre; our Colchester Campus has it all. You'll have plenty of opportunities to catch up with friends, with lots of coffee shops and food outlets for you to relax in between your studies.

Campus atmosphere

The squares are always buzzing with life. From our Thursday Street Market, to our international cultural celebrations, there is always something to get involved in. It's a real family feel to make you feel right at home, and we even have our own Campus Cat Pebbles, don't forget to give him lots of belly rubs!

Study space

Our 24/7 Albert Sloman Library holds six floors of e-resources, research resources and a whole lot of books. It overlooks the lake and the rest of Campus providing the perfect tranquil study spot for quiet reading and revision cramming.

We also offer you a wide range of study spaces across campus – from interactive and coffee-friendly group-working spaces, such as the Limehouse and the Orangery, to pods at Essex Business School and our Silberrad Student Centre. There is always somewhere on campus to get your head down and focus, or to work with others and create new ideas.

*not recommended!

We asked our students to choose their top things on Campus to give you a little insight into what you can expect as an Essex student.

TOP THINGS THAT MAKE ESSEX SPECIAL*

“Essex offers plenty of opportunity to volunteer, to boost confidence, knowledge, experience and certainly your CV.”



1 The people – it's a global community with a really lovely family feel.



2 Campus Cat – How could that cute little guy not be included?



3 Languages for all – Learning a language for free is an amazing opportunity!



4 Team volunteering – you're able to make a huge difference.



5 Amazing architecture – 1960s brutalist architecture is my thing!



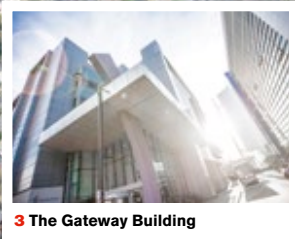
6 Nightline – it's great to have that support even in the middle of the night.

*chosen for you by our students!

OUR SOUTHEND CAMPUS



1 Southend Pier



3 The Gateway Building



5 Southend High Street



6 Prittlewell Square gardens



2 The Forum



4 University Square accommodation

- 1 Seafrost**
- Southend Pier
 - Adventure Island amusement park
 - Beach and promenade

- 2 The Forum**
- 24/7 access to The Learning Hub
 - Student Services
 - Public and academic library
 - Lecture and seminar rooms

- 3 The Gateway Building**
- Academic departments
 - In-house doctor and dentist
 - Lecture and seminar rooms
 - Southend Central train station (50 minutes to London)

- 4 University Square**
- University Square accommodation
 - Supermarket
 - International shops

- 5 Southend High Street**
- Cinema
 - Cafés and restaurants
 - Post Office
 - Chain stores and independent shops

- 6 Clifftown**
- Clifftown Theatre and Studios
 - Prittlewell Square gardens
 - The Railway Hotel music venue

- 7 Victoria Gateway**
- Southend Victoria train station for travel to Colchester, London, and Southend Airport for flights all over Europe

OUR SOUTHEND CAMPUS

In the centre of a buzzing seaside town, Southend is the perfect place for living and learning. The Campus is based in the heart of the town, surrounded by more than 300 places to eat, award-winning nightlife, independent quirky boutique shops, museums and even an international airport.

Things to do

Famous for its beach resort and pier, it would be rude not to take a trip down to the seaside right? Ride the rollercoasters at Adventure Island, dip your toes in the sea or kite surf (if you're feeling adventurous) and wrap the day up with some fish and chips on the beach! Southend also offers plenty of places for shopping, Escape Rooms and lots of local gigs and events. Still not enough to keep you occupied? Southend is so close to London if you want a day out or a night in the city!

Community spirit

Being a smaller campus, Southend offers a close-knit community from all around the world. Our SU Lounge is fully run and owned by students and is the perfect spot to relax with friends. Whether you want to grab a coffee, play a computer game or just hang out between your classes, this is a home away from home.

Study space

The Forum building offers a 24-hour learning hub with modern study spaces. The SU Lounge is also a great place if you need to catch up on some reading and relax with a good book. Within the town centre there are lots of café spots to plug your laptop in, grab a cappuccino and watch the world go by (but try not to get too distracted).

We asked our students to choose their top things about Southend to give you a little insight into what you can expect as an Essex student.

TOP

“The Students’ Union makes me feel like I’m with my family.”

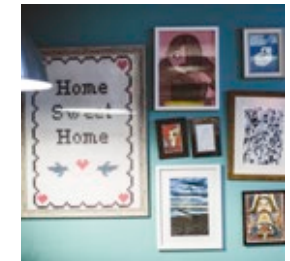
THINGS THAT MAKE SOUTHEND SPECIAL*



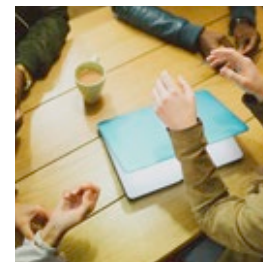
1 Being near London – head out for a day of sight seeing, or a night in the city!



2 The people – a close knit community of people from around the world.



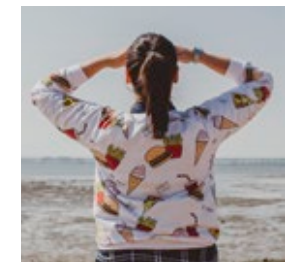
3 Students’ Union – here to make your Essex experience the best it can be.



4 Our lecturers – offering support throughout your studies.



5 Local gigs and events – there's always a new event to go to!



6 The beach – Southend's sweeping coastline has seven award winning beaches to enjoy.

*chosen for you by our students!

OUR STUDENTS' UNION (SU)

Our SU run an entire student town on our Colchester Campus, complete with shops, cafés, bars, a nightclub, restaurants and even a hair salon. If you're based in Southend you can grab a coffee, play Xbox or PlayStation and chill out between lectures at our new SU Lounge.

Heirloom

When you join our SU you'll receive your customisable Heirloom charm. Each Heirloom is inscribed with a number, which is passed on from alumni to undergraduate. That shared number shows that Essex students are a community, united by their desire to make a difference.

Shape everything

Students run the SU. You decide what gets stocked in our stores, what drinks we serve in our bars, and what we campaign for together. Whatever you want to do, we're here to make it happen. Nothing is too big or too small.

Get involved

At Essex, we want you to challenge everything and push yourself, but why stop in the classroom? Our SU offers membership to over 100 societies, catering to every taste. We even have a Harry Potter society. Plus, if we really don't have a group for you, we'll help you set-up your own.

Stay active

Sport more your thing? We have over 40 teams, from those you might expect like football, rugby and netball plus some sports you may have never tried before. From fencing to MMA, we've got plenty to keep you busy.

What's on

University shouldn't be all work. We'll make sure you're never bored at Essex with activities day and night to keep you occupied. Our cinema shows the latest films, we have quizzes in the SU Bar, open forums for heated debates and so much more.

Read the SU pledges at essexstudent.com

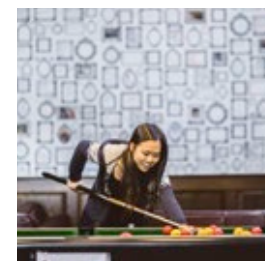


TOP THINGS ABOUT OUR SU*

“Around exam time there is a real effort to help each other through and I don't think this would happen without the SU.”



1 Campus and extra stores (Colchester) – perfect for your sushi, sandwich or chocolate fix!



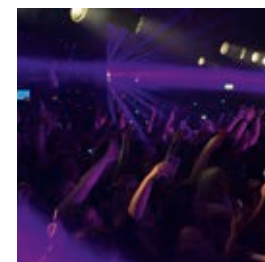
2 SU Bar (Colchester) and Lounge (Southend) – it's nice to have a space to meet and relax with friends.



3 Heirloom tags – to make you truly feel like part of the family #Essexforever!



4 SU Angels – bringing those all important goodies to keep you going during revision time!



5 Sub Zero (Colchester) – having a nightclub on Campus saves having to go into town!



6 The Salon (Colchester) – Haircut and blowdry between lectures? Yes please!

*chosen for you by our students!

GOAL DIGGING



“I’ve never considered myself a particularly sporty person but in my second year I decided to try out hockey and I stuck with it.”



Olivia Burns, centre.
Hockey-and-bobble-hat enthusiast.

Whether you’re a keep-fit newbie or a wannabe Olympian, the sports facilities at Essex will help you discover a new passion.

Our gym is the most popular sporting facility on campus, offering 160 workout stations and 80 fitness classes a week, while the new Sport Arena offers even more room for running around.

Try something new, we dare you

If you want to try a new sport but don’t want to join a team, Active Sessions are open to all and free for Essex Sport members. Allowing you to try a new sport without committing to regular training, Active Sessions are a great way to have fun. They’re a great way to get involved in sport, no matter what your ability is. Our ‘Learn To’ courses are also a great way to get you started when trying a new activity.

For those who want more, our Students’ Union is home to the Essex Blades – over 40 sports clubs who compete locally and nationally. Olivia Burns (pictured) is a BA Psychology student. “I’ve never considered myself a particularly sporty person but in my second year I decided to try out hockey and I stuck with it. It’s such a laugh training and playing games with the girls and we’ve even been able to play on the Olympic pitch!”

Top of your game

Participating in sport at Essex is a great way to boost your employability. We can support your personal development in sport, offering coaching opportunities in an official or volunteer capacity. There are work placements within Essex Sport, while our partnerships with sports organisations and strong links with numerous national governing bodies means we can give you the practical experiences that will make your CV stand out.

If your sporting dreams involve Olympic glory, we are an accredited Sport England Talented Athlete Scholarship Scheme (TASS) centre, able to offer an annual package of support and funding worth £2,750 for athletes nominated by their National Governing Body in around 25 sports. Undergraduates can also receive sports bursaries worth up to £3,000 per year, aimed at those looking to combine education with the pursuit of a sporting career following graduation.

Visit essex.ac.uk/life/sport for more on keeping fit at Essex.

SPORT AT ESSEX

At Essex we focus on making it accessible for everyone, no matter your skill level, no matter your experience or what campus you study at. Sport is in our blood and we are renowned for our extensive sports facilities and research on the benefits of Green Exercise.

Colchester

Located within the Colchester campus and covering 40 acres, our outdoor sports area includes an 18-hole disc golf course, all-weather tennis courts. Plus tons of space for you and your mates to play a game of five-a-side or take a long walk through the meadows. In 2018, we opened our Sport Arena which is built to international sporting standards. It boasts seating for 1,655 spectators, and includes 20 courts for basketball, netball, volleyball, badminton and futsal.

Southend

As a Southend student, being based in the town centre means a vast range of activities are only a stone's throw away. From pumping iron in the gym to kitesurfing or swimming in the sea (if you don't mind the cold!) there is plenty to keep you active. Or take a stroll or cycle along the coast for a relaxing way to keep fit.

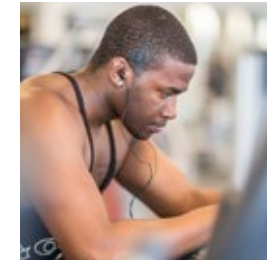
Our exclusive arrangement with Simply Gym in Southend offers you 24/7 access to the gym, equipment and fitness classes, so that you can keep active throughout your studies.

TOP ACTIVE THINGS TO DO AS AN ESSEX STUDENT*

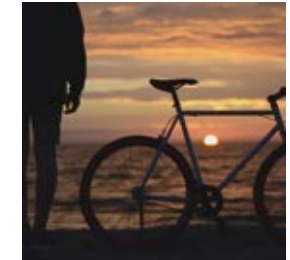
“The sports and activities at Essex are a great opportunity to meet new people and try something different!”



1 SU sports clubs – a brilliant way to make new friends.



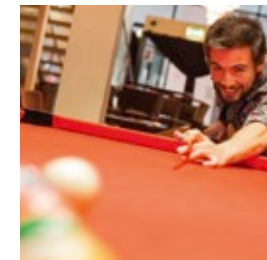
2 Sport Gym – to keep active between lectures!



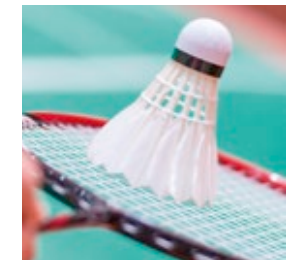
3 Walking/running/cycling – both campuses offer beautiful surroundings perfect for a cycle or a stroll.



4 Climbing – 250 metres of climbing space means you can take your fitness levels to the top.



5 Pool and darts – what better way to relax with friends after class?



6 Badminton – our brand new Sports Arena provides the perfect space for a game!

*chosen for you by our students!

OUTSIDE THE CLASSROOM

“It was great to have the opportunity to explore my interests in more depth.”

See more clearly.
Find out more about what you like.



Go wherever your curiosity leads you. Get involved in game-changing research. Debate with others at our THINK series. There's so much more to do besides study.

Sharing new ideas

Throughout the year our THINK series of debates engages with the issues that matter today. Open to all, each debate welcomes a guest speaker to introduce a topic before the floor is opened for discussion. From sex work to Brexit and mansplainers to rogue traders, nothing is off limits. Having won the Guardian University Award for Student Experience in 2016, the THINK series continues to challenge convention at every opportunity.

Get involved in research

For those who are interested in earning money while honing their research skills, Essex offers you the opportunity to get involved in current projects through our Undergraduate Research Opportunities Programme (UROP).

Recognising capabilities

Callum Ross completed his UROP in our molecular microbiology labs. Using advanced molecular techniques he worked alongside postgraduate students and academics

investigating spatiotemporal dynamics of bacterial communities in soil. “The placement taught me the intricacies of research as opposed to other laboratory settings. I faced and overcame the challenge of transferring my skills to a different branch of microbiology. The independence afforded to me during the 150 hour placement helped me better recognise my capabilities and allowed me to decide whether I wanted to continue postgraduate study.”

Looking to the future

Now in his final year at Essex, Callum is ready to apply his advanced laboratory skills to a research environment. The skills he's gained are clearly standing him in good stead, as he has recently applied for a PhD at the University of Cambridge. “A testament to the outstanding research at Essex, I completed my UROP placement with new scientific abilities, a newfound appreciation for work in a research driven environment and a renewed enthusiasm for postgraduate study.”

YOUR EDUCATION: POWERED BY RESEARCH

Predicting crime

An advanced computer software programme saved Milan's police force close to 2.5 million Euros in one year. KeyCrime is designed to enable the police to predict both the perpetrator and the timing of a crime, based on the theory that criminals are creatures of habit. Professor Giovanni Mastrobuoni from our Department of Economics carried out the programme's first academic evaluation and is currently working with Essex Police in developing and evaluating effective predictive policing practices.



How Arab journalists are involved in political change

Are Arab journalists supporting democratic change or are they acting as agents of conformity supporting the status quo? That's the important question Dr Fatima el Issaqi poses in her book Arab National Media and Political Change, which dissects the change in media practices by traditional journalists, their perception of professionalism and the complex interplay between journalists and politicians in fluid, unpredictable and unsafe transitional conditions.



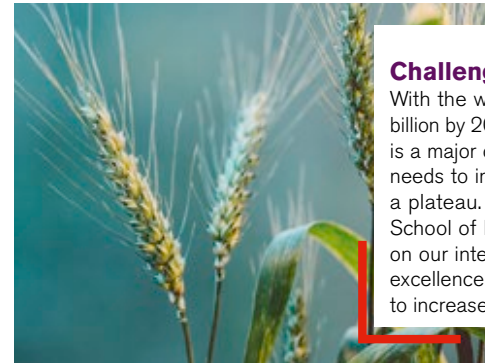
Why did Britain really vote Brexit?

The first comprehensive and objective study of why the UK voted for Brexit has been undertaken by Professor Whiteley from our Department of Government. Brexit: Why Britain voted to leave the European Union, uses over 10 years' worth of survey data, a pre and post referendum panel survey and a unique survey of UKIP members to drill down into the real factors behind the vote and to examine the long-term consequences.



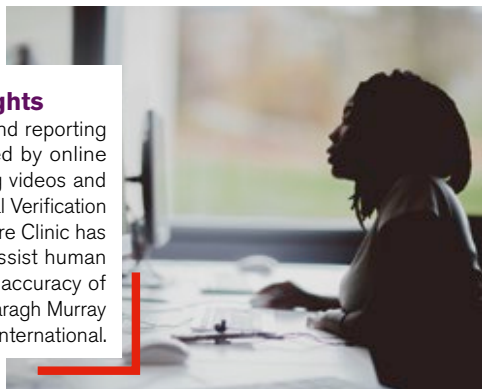
Challenging world hunger

With the world's population predicted to hit nine billion by 2050, the challenge of feeding the planet is a major one. To meet demands food production needs to increase, yet wheat yields have reached a plateau. Professor Christine Raines from our School of Biological Sciences has been building on our international reputation for innovation and excellence in photosynthesis to explore new ways to increase wheat production.



A digital guide to human rights

How human rights documentation and reporting is carried out has been transformed by online resources and social media, enabling videos and images to be widely shared. The Digital Verification Unit based in our Human Rights Centre Clinic has produced an introductory guide to assist human rights investigators in assessing the accuracy of information. The project is led by Dr Daragh Murray and run in partnership with Amnesty International.



Can your hands tell your sexuality?

An Essex study of identical twins with different sexualities has discovered that not only is their sexuality different – their hands are too. The research suggests that our sexuality is determined in the womb and is dependent on the amount of male hormone we are exposed to, with those exposed to higher levels of testosterone being more likely to be bisexual or homosexual.



DIVE IN

Study or work abroad, learn a new language – enjoy a world of opportunity at Essex.

You're going to get really good at packing your suitcase. At Essex, you can study or work abroad as part of your degree.

Emma Ward is a BSc Marine Biology student. She has spent time in Indonesia, taking part in a study on tropical seagrass beds and their interaction with tidal cycles. But her globetrotting didn't stop there. "For my placement year, I chose to head to the island of Samos, Greece, to join the Archipelagos conservation team." In Samos, Emma took part in a number of conservation activities, collecting data on turtle populations and dolphin strandings.

A helping hand from Essex

For Emma, her placement year was "an exceptional experience" and one she would highly recommend. Every year Essex students receive various scholarships and grants to support their overseas (or indeed, under-seas) adventures. You can study for a term or full year at a partner university and choose to undertake a language teaching assistantship or opt for a work placement.

Find your language

Emma also took the opportunity to learn Greek during her year abroad, but if you're more of an armchair traveller, you can learn a new language from the comfort of the campus. Our innovative Languages for All programme gives Essex students the opportunity to learn a language alongside their degree, at no extra cost, for one year.

It's more than just a degree

"Get the most you can from your university experience," advises Emma. Immersing yourself in another culture is certainly one way of making your time at Essex more memorable. And there's no doubt that someone who shows they're willing to try something new will always stand out from the crowd when it comes to job hunting. So come to Essex – and then leave us behind. We won't mind *sniff*.

If you're interested in work placements in the UK, turn to page 45.

Find out more about opportunities for travel at essex.ac.uk/undergraduate/study-abroad and for language study at essex.ac.uk/language-learning

“Get the most you can from your university experience.”

Emma Ward underwater in Indonesia.

GO TO WORK

“One of the things I really appreciate at Essex is that it’s given me a chance to get a wide range of work experiences.”

Preparing for life after graduation can be tough. So at Essex we do everything we can to help you achieve your goals.

Frontrunners, UROP and Internships

Essex students can take part in three extracurricular paid work experience schemes. Essex Interns will help you find a paid internship over the vacations. UROP (Undergraduate Research Opportunities Programme) allows you to gain paid research experience on campus. Frontrunners is our award-winning short-term placement scheme that offers you the opportunity to undertake paid, career-relevant employment within the University while you study. All three schemes help develop the skills you need to impress future employers.

Placements

Most of our degrees offer an option for a placement year, giving you the opportunity to gain relevant, real-world experience. The Essex Employability and Careers Centre is our on-campus job shop, while our online service CareerHub+ offers advice on improving CVs, careers fairs, securing internships and much more.

Employability skills

We ensure employability skills are embedded throughout your studies with many degrees offering the option of work based learning and employability modules. You can also highlight your extracurricular activities on your Higher Education Achievement Report (HEAR) through the Big Essex Award. The Big Essex Award helps you identify and sell the skills employers look for and loads of different activities can count, from part-time work, to volunteering and contributing to SU societies. Your HEAR is recognised by employers across the country and is the perfect way to showcase your unique experiences and qualities.

Continued support

Essex students benefit from other exciting opportunities, such as our Click crowdfunding platform, career mentoring programme, and start-ups programme, while our graduates have access to support from the Employability and Careers Centre for three years after graduation.

For everything you need to know about careers, employability and placements visit essex.ac.uk/life/careers

“One of the things I really appreciate at Essex is that it’s given me a chance to get a wide range of work experiences. There are plenty of flexible jobs on our campuses, created for students.

“During the first year I worked in the kitchen at Blues, a food outlet on campus. It was great fun...I will never forget our serenades over the carbonara sauce! In the second year I got promoted to Student Supervisor, which gave me a chance to gain experience managing a small team. It was challenging but I definitely learned a lot.

“In my final year I worked as a Student Recruitment Marketing Frontrunner. It was a creative role which gave me a range of useful experiences, including blogging, managing social media, photography and interviewing students!”

Ania Romankiewicz, BA Modern Languages

SUPPORT SERVICES

Whether you're a full-time or part-time student, live on campus or further afield – whenever and wherever you need help, we're here for you.

Student services

Our Student Services Hub is a one-stop shop for practical advice or confidential guidance, on everything from accommodation services to how to cope with homesickness. We provide support if you are experiencing mental health difficulties and have a specialist team available to help you. We also offer a Peer Mentor Scheme, where we can match you up with another undergraduate who's been there, done that and can help you settle into university life.

Mature students

Around 37% of our student body are mature students, so we have a real understanding of the challenges that come when combining studies with other responsibilities. You can join the Mature Students Network, with free access to a range of social, welfare and academic support networks. We also have a day nursery on our Colchester Campus which offers a discounted rate to students with children.

Disability and mental health

If you have a disability, medical condition or

specific learning difficulty an adviser will be on hand to talk you through alternative exam arrangements, lecture recordings, assistive software, access and more. You'll also have a specific contact within your department and SU Disabled Students' Officer to represent you.

We believe that our university should be a place that is psychologically and emotionally healthy. Advice and counselling are available if you have been diagnosed with a mental health condition, or if you feel low or anxious.

Commuting students

If you travel to one of our campuses to study, socialise and play sport, you're not alone. We have many students living in the local area and beyond who make that regular daily trip, and it's important to know that everything on campus is for you too. We have many facilities to make sure you're able to join in with university life to the full.

To see the full range of services we offer visit essex.ac.uk/life/student-services

“At Essex the atmosphere is very positive and welcoming, and the University makes it clear that it cares about its students' success in every aspect, including education and wellbeing. It keeps students engaged and offers countless opportunities for students to get involved in uni and in the community which I think is extremely important.”

Kimia Aghasoleimani, BSc Biomedical Science



“When I first visited Essex and saw the beautiful, open campus, met the kind staff and students, and saw my department I realised I would really enjoy myself here, and I have.”

Kimia can help.
Her t-shirt says so.

WORLD CLASS

“I hang around with people from different regions of the world, and sometimes I get to sing French songs with my French mates too!”



At Essex you join a global learning community. Study an internationally relevant curriculum taught by academics whose research has international impact.

Support with your studies

We help you get the most out of your studies by providing a range of tailored support, including academic skills and English language classes. Our academic departments also provide support services, with most offering one-to-one tutorials with lecturers and running student mentoring schemes.

Welfare and community

Our Student Services Hub is on hand to offer advice on funding, immigration, housing and healthcare. We provide facilities for religious worship on campus and will do all that we can to make Essex feel like home.

As a member of our Students' Union you'll discover our growing number of societies, including nearly 40 international societies that celebrate the cultural diversity of our global community.

Well-connected

Essex is awesome, but we understand you may want to explore a little further whilst you're here. We have excellent road and rail links to London, with frequent trains from both Colchester and Southend and a journey time of under an hour.

All three campuses are within two hours of London Heathrow, London Gatwick and London Stansted airports and are served by frequent airport transfer coach services. Southend Airport flies to a number of popular European destinations.

Essex family

Drawn from around 140 countries, we think of our 95,000 alumni as family. So we like keeping in touch. We organise professional networking events and reunions all over the world and will always want to hear your news.

Get in touch

Visit [essex.ac.uk/international](https://www.essex.ac.uk/international) or email us your questions about being an international student to admit@essex.ac.uk

“I'm currently in my final year of my degree and loving every bit of it. Coming to Essex from India, it was one big challenge but I've been overwhelmed with support from my tutors and friends.

“Computers are my first love, although I also love travelling, writing poems and meeting new people. I hang around with people from different regions of the world, and sometimes I get to sing French songs with my French mates too!

“In my first year I was paired with a peer mentor because I didn't know where to go when I had problems. She helped me get through my assignments and got me more involved in my department. I wanted to help students facing similar issues. So I thought why not help people and volunteer to be a peer mentor myself? It makes me really happy to get people on track.”

Nupoor Singh, BSc Computer Science



WELCOME HOME

Lifelong friendships will most definitely be made. But your favourite mug might get broken.

Pancake brunches. Board game marathons. Assignment all-nighters. Your new flatmates will be with you for every moment of your new student life – there to celebrate the good times and pick up the pieces on the not-so-great days (quite literally if they break your mug). Have a look at our student accommodation and start packing for moving day.

If you're going to live away from home for the first time, you couldn't choose a better place than Essex. There's plenty to do on our campuses, lots of places to explore nearby – and London is just down the road. So what are you waiting for? Go ahead and make yourself at home.

New memories. New adventures.

Living on campus

Moving away, possibly for the first time, can feel daunting. But don't worry, we offer a variety of University accommodation so that you can find the perfect one for you.

Included in your rent is wifi, heating, hot water, contents insurance, electricity and the cleaning of communal areas (such as kitchens) – so no need to argue about whose turn it is to Hoover! Rooms are normally let for the full academic year from late September to the end of June, which means that even if you're away from the University during the winter and spring vacations, you don't have to remove your things from your room.

Most flats are mixed-gender, although single-gender flats are available, and we offer some single-occupancy adapted rooms. We have a limited amount of self-contained accommodation which is suitable for either single or double occupancy, as well as twin ensuite rooms and studios. We cannot guarantee accommodation for first year students who are accompanied by a partner, but we'll do our very best to help. Just make sure you get in touch as early as you can if you think you need to talk about any of this with us.

E askthehub@essex.ac.uk

Guaranteed accommodation

You are guaranteed accommodation for your first year of study – just make sure you've had your place confirmed, your accommodation application is received by the published deadline, and you accept your offer of study.

* The accommodation costs on the following pages show the 2019-20 costs per week. It's likely that our rental charges for 2020-21 will increase from these amounts. We'll publish the 2020-21 costs on our website as soon as they are available.

Living nearby

The Students' Union offers a free housefinding service from our Colchester Campus. They provide support for everyone moving off campus, complete property and landlord checks to ensure your safety, and help you find your ideal rental property, all free of charge.

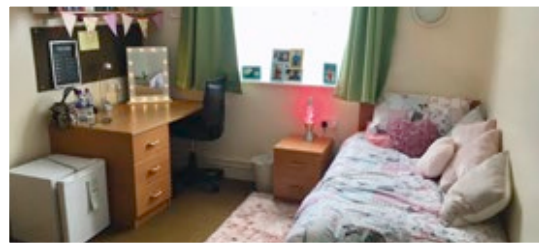
Settling in

Our Residence Life team helps to create a welcoming and friendly community for you to live and learn in. You'll have a Residents' Assistant based in your area of accommodation who'll meet you soon after you arrive. They'll make sure that you have opportunities to get involved in University life and social activities, and provide support outside of office hours. We offer a safe and secure living environment with support available 24-hours a day.

E admit@essex.ac.uk



↗ **Before** pretty bare.



↗ **After** bare pretty.



YOUR NEW HOME

essex.ac.uk/accommodation

↗ **Settle in, get cozy and fire up Netflix.**

ACCOMMODATION

THE COPSE



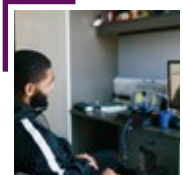
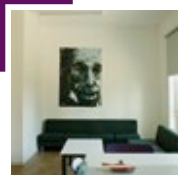
Size: 643 rooms
Cost per week: £163.17-£191.31*
Location: Colchester Campus

- 10-minute walk to campus
- 4-12 students in each flat
- En suite facilities
- Studios and adapted rooms
- Near the Essex Business School

Brand new and close to Essex Business School, The Copse has a social pavilion, common room and shop.



Take a look



SOUTH COURTS



THE TOWERS

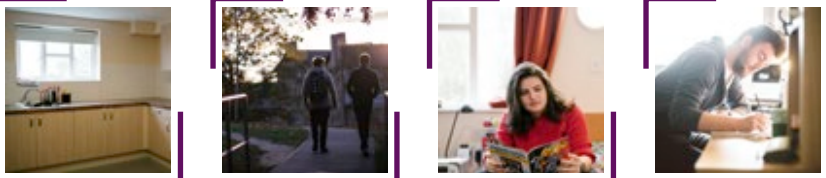


Size: 1,218 rooms
Cost per week: £150.78-£152.95*
Location: Colchester Campus

- 4-12 rooms per flat
- En suite facilities
- Some adapted rooms available

Near the centre of campus, South Courts are the ideal place if you want the perfect balance between your academic studies and social life.

Take a look

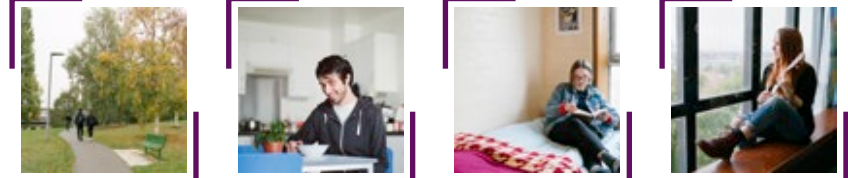


Size: 1,142 rooms
Cost per week: £99.05-£101.50*
Location: Colchester Campus

- 13-16 rooms per flat
- Shared showers and toilets

Our six iconic Towers have always been, and still are, the heart and soul of our Colchester Campus as well as a local landmark.

Take a look



*See page 52 for information on accommodation costs.

THE MEADOWS



UNIVERSITY QUAYS

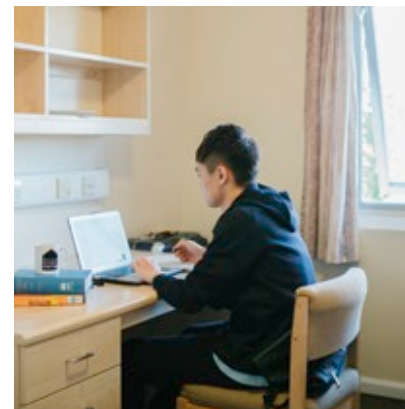
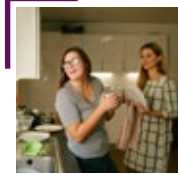
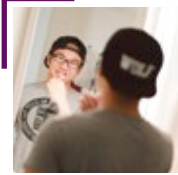
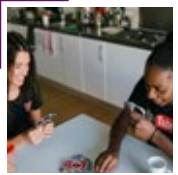


Size: 228 townhouse rooms plus 420 flats
Cost per week: £150.43-£152.95*
Location: Colchester Campus

- 12 rooms per townhouse with lounge/kitchen
- 5-7 rooms per flat with shared kitchen

With a real sense of its own community, including a handy shop and common room, The Meadows is only a short walk from the centre of campus.

Take a look



Size: 766 rooms
Cost per week: £143.78-£169.05*
Location: Colchester Campus

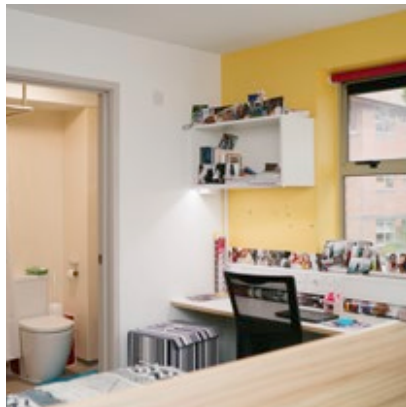
- 7-8 rooms per flat
- En suite facilities

With amazing views of the River Colne, and just a 15-minute walk from campus, University Quays are a fantastic social hub.

Take a look



THE HOUSES

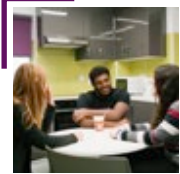
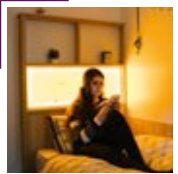


Size: 267 rooms
Cost per week: £136.92-£148.75*
Location: Colchester Campus

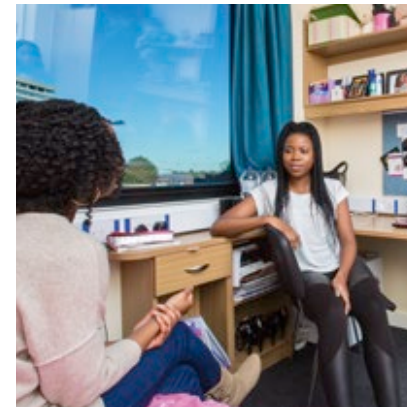
- 4-6 rooms per flat
- En suite facilities
- Some adapted rooms available

Located by our beautiful parkland, yet close to our main study facilities, The Houses are ideal if you're looking for a quieter living space.

Take a look



UNIVERSITY SQUARE



Size: 497 rooms and 64 studio flats
Cost per week: £148.05-£182.63*
Location: Southend Campus

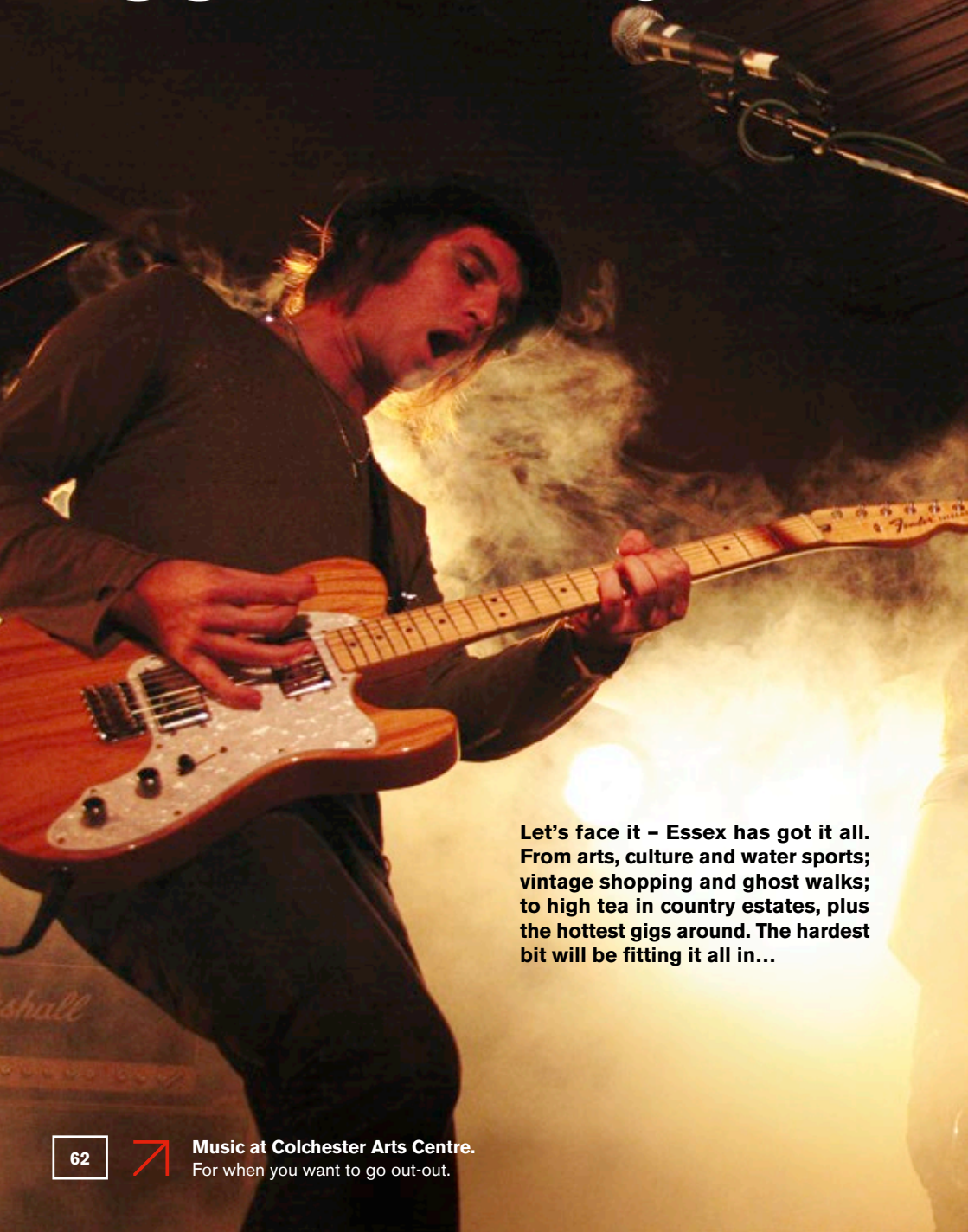
- 11 rooms per flat
- En suite facilities
- Studio flats have own kitchenette
- Some adapted rooms available

Just minutes from Southend town centre and all its benefits, University Square has everything on your doorstep.

Take a look



ESSEX LIVING



Let's face it – Essex has got it all. From arts, culture and water sports; vintage shopping and ghost walks; to high tea in country estates, plus the hottest gigs around. The hardest bit will be fitting it all in...



The great outdoors

Our county of Essex is home to some of the best coastline in the UK – perfect for a sunny day-out, or even some kitesurfing if you're seeking an adrenaline rush. Colchester is close to pretty villages, ancient woodland and an Area of Outstanding Natural Beauty. Southend is close to Hadleigh Park, which hosts an Olympic mountain biking course, archery, kayaking and paddleboarding.



Eating and drinking

Food from around the world, chips on the seafront, local beers by the pretty Wivenhoe waterside. Where do we even start? Essex is a foodie's dream. Later on at night, the county really lights up, catering for everyone. Whether you want a chilled catch up or a buzzing night out, we've got cocktail bars, real ale pubs, wine bars and top nightclubs. Life in Essex doesn't stop just because the sun's gone down!



History and culture

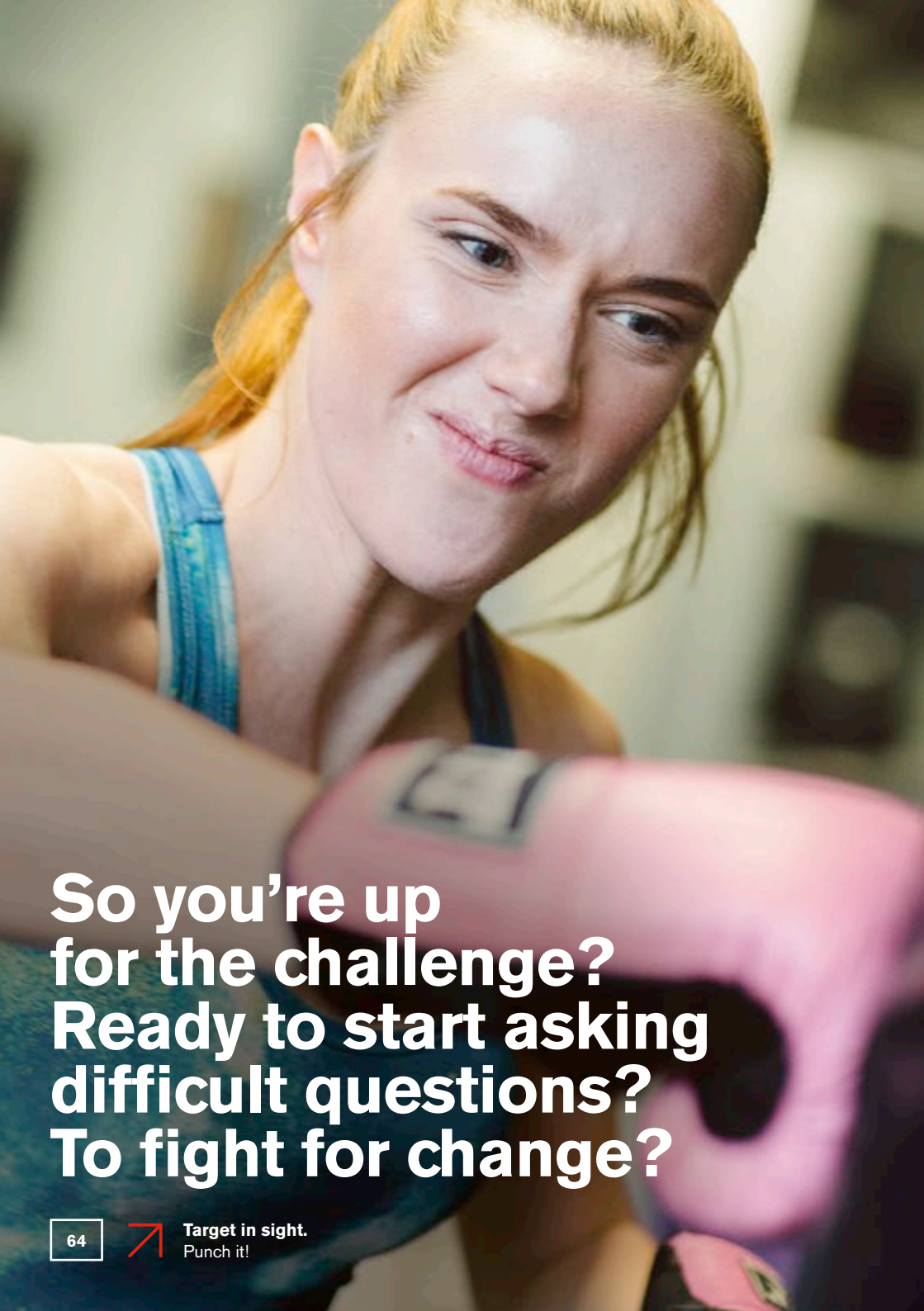
Essex is full of hidden historical gems. Colchester is Britain's oldest recorded town, dating back to the Roman era. Its Norman Castle is now a fantastic museum showcasing the colourful history of the local area. It's surrounded by a gorgeous park and tucked away in other corners of the town are Roman walls and priory ruins. We've got galleries, music venues and theatres aplenty so you can gorge yourself silly on music, comedy, and art.



Days out

When you're in Colchester, make sure you head down Sir Isaac's Walk and Eld Lane, two of the quirkiest streets in the town centre, where you'll find retro clothing, old-school sweet shops and quaint tearooms. For the animal-lovers among you Southend has a fab aquarium and Colchester Zoo is definitely worth a visit – it's one of the best in Europe.





APPLYING TO ESSEX

So you're up
for the challenge?
Ready to start asking
difficult questions?
To fight for change?

Of course you are – that's why you're still reading this.

Here's the nuts-and-bolts information you need about our Open Days, financing your studies and making an application to study at Essex.

And if you're ready to sign on the dotted line, head to

essex.ac.uk/ug/applying-to-essex





OPEN DAYS

An Open Day is your chance to meet your department, look around campus, find out about student finance. You probably think an Essex Open Day is just the same. Of course, we'll show you all the important stuff, but why stop there? You don't know open days until you've experienced an Essex Open Day.

Meet world-class academics and like-minded students. Laugh with family. Find your new home. Experience taster lectures. Get out of your comfort zone and try something new. Drink tea and eat cake, copious amounts of cake. Hear other people's stories and start yours. Experience an Essex Open Day.

Colchester Campus

15 June 2019
21 September 2019
26 October 2019

Southend Campus

14 September 2019

Can't make an Open Day?

Don't worry – contact us and we can arrange a campus tour for a date that suits you. Or, if you can't visit, you can take a 360° tour online to get a taste of life at Essex.

E tours@essex.ac.uk

[essex.ac.uk/visit-us](https://www.essex.ac.uk/visit-us)



HOW TO APPLY

Applying to Essex is straightforward. We make things as easy for you as possible, so you can get on with the important business of planning your Essex experience.



How do I apply?

Applications for the majority of our courses should be made online via UCAS.com.

- The exception is our BA/FdA Therapeutic Communication and Therapeutic Organisations, check page 159.

When should I apply?

If you are applying for October 2020 entry you can do so from September 2019 onwards. A small number of our courses may close on 15 January 2020 but the majority will remain open until 30 June 2020.

Next steps

Once we receive your application from UCAS it is considered by our Admissions Team. When making a decision on your application, we take into account a range of factors, including GCSE performance, AS-level results (if taken), subjects taken at A-level, BTEC (or equivalent qualifications), predicted grades, your personal statement and your academic reference.

UCAS will officially inform you when a decision has been made on your application. You'll also receive information from us if we make you an offer. Once you've received a decision from all your choices, UCAS will ask you to accept one offer as your firm (first) choice and one offer as your insurance (second) choice via UCAS Track.

Applicant Days

If you're based in the UK, you'll have the opportunity to visit us during an Applicant Day. These days offer you the chance to find out more about your course, meet our staff and students and have a look around our campuses. Some of our departments interview their applicants during an Applicant Day. These interviews can take different formats depending on your subject.

Campus Tours

We'll send you all the information you need beforehand. If you're not resident in the UK but would like to visit our campuses, we would love to show you around. Weekday tours can be booked through our website. Alternatively, you can take a look online at our 360° campus tours.

E tours@essex.ac.uk
essex.ac.uk/visit-us

Confirming your place

If your offer is conditional and you go on to meet the conditions specified in the offer, we'll confirm your place. If your results don't quite meet the conditions, we may still confirm your place, but this depends on the results and the availability of places. If you don't meet the conditions of your offer and don't secure a place on your chosen course, you may be offered an alternative course. You also may be offered a foundation year Essex Pathways degree (see page 172). Our decision is usually made within a few days, once we have received all the information we need, and you'll be notified by UCAS.

Deferred entry

The majority of our courses enable you to take a gap year. You can apply in the normal way during 2019-20, but should indicate your year of entry as 2021 on your UCAS application. Applications for deferred entry will be considered on the same basis as those for entry in October 2020.

Second or final year entry

We're happy to consider applications for entry to the second or final year of study for most of our courses. For direct entry to the second or final year, we would normally expect you to achieve at least 55-60% overall in your first or second year modules of a comparable course at another institution. Contact our Undergraduate Admissions Office for further information, or see our website for information on transferring from another university.

E admit@essex.ac.uk
[essex.ac.uk/undergraduate/
applying-to-essex](https://essex.ac.uk/undergraduate/applying-to-essex)

Other things to consider

Some courses require you to undergo a Disclosure and Barring Service check (DBS), when working with children and/or vulnerable adults, and an occupational health check.

When you apply you can declare whether you have a disability or health issues so we can provide support. We have a team of disability and wellbeing advisers, dyslexia tutors, and other specialist staff.

Entry requirements

UK STUDENTS

Typical entry requirements are described on each subject page of this prospectus. Visit our online Course Finder for additional information.

[essex.ac.uk/subjects](https://www.essex.ac.uk/subjects)

The wide range of qualifications that we consider include the following:

- A-levels
- BTEC qualifications
- International Baccalaureate Diploma and Diploma Programmes
- QAA-approved Access to HE Diplomas
- Open University courses
- Professional qualifications

Our typical offer will require specific grades in three A-levels (or equivalent) for most courses, although we consider additional qualifications. For example, if your results fall short of the offer level by a small margin, your result in the Extended Project or an additional AS-level will be taken into account. We want you to stand the best chance of benefiting from an Essex education. We will also consider your application if you are re-taking one or more exams.

This applies to students taking modular A-level examinations and those taking the reformed linear A-level examinations. For further information on our policy regarding qualifications reform, visit our website.

[essex.ac.uk/ug/applying-to-essex](https://www.essex.ac.uk/ug/applying-to-essex)

GCSE REQUIREMENTS

Our general entrance requirements are a minimum of two full A-levels and five GCSEs at grade C/4 or above, including English, or equivalent. Some courses also have additional GCSE subject requirements which you'll find on the relevant subject pages. If you don't currently meet our GCSE requirements, contact our Undergraduate Admissions Office for advice.

E admit@essex.ac.uk

EU AND INTERNATIONAL STUDENTS

If you're from outside the UK, we are more than happy to make offers based on EU and international qualifications that are considered equivalent to our standard A-level offer. Contact our Undergraduate Admissions Office for more information on specific qualifications.

E admit@essex.ac.uk

Up-to-date information is also available on our online Course Finder.

[essex.ac.uk/subjects](https://www.essex.ac.uk/subjects)

IMMIGRATION AND APPLYING FOR A VISA

If you require a visa to study in the UK, you'll need to apply under Tier 4 of the UK Government's Points Based Immigration System (PBIS). The status of EU students may be subject to review should the terms of the UK's withdrawal from the European Union change the status of EU students.

We are required to ensure compliance with UK Home Office regulations as a Tier 4 Sponsor. In some circumstances, we may be unable to make an offer or issue a CAS if an applicant is unable to meet all Tier 4 requirements, including when there have been changes to these requirements made by the UK Home Office. Refer to our webpage for information about immigration and applying for a visa.

[essex.ac.uk/immigration](https://www.essex.ac.uk/immigration)

ENGLISH LANGUAGE REQUIREMENTS

You are required to have GCSE English at grade C/4 or above (or equivalent). You can demonstrate your level of English language by achieving a specified score in IELTS or another equivalent test that we accept. You don't need to achieve this level before making your application, but it will be one of the conditions of your offer. See the table opposite as a guide.

ENGLISH LANGUAGE REQUIREMENTS

Point of entry	Course(s)	IELTS (academic version)
Pre degree (Home and EU only)	Cert HE courses*	5.0
	Courses with a Year 0 pathway	5.5
First year	All courses*†	6.0
Second year	All courses*†	6.5

*Note that students who need a Tier 4 visa to study in the UK must meet the UK Home Office Visas and Immigration's minimum English language requirements, including component requirements.

†Note that BA Multimedia Journalism, BSc Nursing, BSc Physiotherapy, BSc Occupational Therapy, BSc Speech and Language Therapy, BA Social Work and courses in Edge Hotel School have different English language requirements. See relevant subject pages for further details.

For full details of our English language requirements, including UK Visas and Immigration minimum component scores, visit: [essex.ac.uk/see/ug-intl-english](https://www.essex.ac.uk/see/ug-intl-english) (for applicants who require a Tier 4 visa) [essex.ac.uk/see/ug-eu-english](https://www.essex.ac.uk/see/ug-eu-english) (for EU/EEA/Non-Tier 4 applicants)

Contact our Undergraduate Admissions Office for further information about these and other English language tests that we accept. **E** admit@essex.ac.uk

Pre-sessional and English language courses

We offer pre-sessional English language courses at the University of Essex International College (in partnership with Kaplan) which can be taken before your degree if you are an EU or international student and do not meet our English language entry requirements. Our courses will help you improve your English. Upon successful completion of the pre-sessional you will be able to proceed on to your degree course without having to retake IELTS. To find out which is the best pathway for you visit our website.

[essex.ac.uk/international/pre-sessional](https://www.essex.ac.uk/international/pre-sessional)

Study abroad

Many of our courses give you the amazing opportunity to study abroad for up to a year in another country at a different university. This gives you the chance to immerse yourself in another culture, develop your independence and become a more globally-aware person. We have over 150 partner institutions throughout Africa, Asia, Europe, the Pacific, and North and South America.

[essex.ac.uk/undergraduate/erasmus-and-study-abroad](https://www.essex.ac.uk/undergraduate/erasmus-and-study-abroad)

East 15 Acting School

If you apply for a course at East 15 Acting School, you must apply directly to East 15 as well as UCAS. Most courses require you to attend an audition, interview or technical theatre assessment.

[east15.ac.uk](https://www.east15.ac.uk)

Further information

For information about our Undergraduate Admissions Policy visit our website. In the event that you are dissatisfied with any aspect of our admissions process, procedure or policy and want to submit a formal complaint, you can do so via the Complaints Policy for applicants.

[essex.ac.uk/admissions-policy](https://www.essex.ac.uk/admissions-policy)

Undergraduate Admissions Office

E admit@essex.ac.uk
T +44 (0)1206 873666

FEES AND FUNDING

Your tuition fees are invested to provide you with a transformational education. They help us to create the stimulating and cutting-edge environment that supports the world-class research and education we offer at Essex.

UK and EU students

TUITION FEES

The tuition fees for 2020-21 have not yet been confirmed. We will publish them on the website as soon as they are available.

essex.ac.uk/fees

For reference, the fees for UK and Channel Islands students commencing their studies in 2019 were set at £9,250.

In previous years, the tuition fee has increased for each academic year of study. The 2019 fee was frozen but we do not know yet if, or when, this will change. Previous increases were limited to the annual increase in the RPI-X index.

Fees for full-time undergraduate students with a Home fee status (which currently includes EU students*) remain subject to UK Government approval.

*The fee status of EU students may be subject to review should the terms of the UK's withdrawal from the European Union change the legal status of EU students.

ACCESS TO LOANS

Taking out a loan can feel like a big financial commitment, so we want to make sure you know exactly how it works. The UK Government provides UK and EU students with a tuition fee loan (subject to eligibility criteria), meaning you do not need to pay tuition fees upfront or during your course.

If you're a UK student you can also take out a maintenance loan, which helps cover living expenses while you're at university. You only start repaying your loan once your income reaches a certain level, and if your income drops below this, you'll stop making repayments – so you don't need to worry about not keeping up.

Following the UK's decision to withdraw from the European Union and at the time of publication, the UK Government has not yet confirmed whether EU students starting in 2020 will be eligible for a loan for the duration of their course. Further information will become available once confirmation from the UK Government has been received.

If you're an EU student, we encourage you to research financial support offered in your home country. National grants or loans may be provided by your government or local careers service.

www.gov.uk/student-finance

International students

TUITION FEES

For a majority of our undergraduate courses our international fees for the academic year 2020-21 are:

- Full-time undergraduate degree courses £16,050-£18,730

For a list of all international tuition fees please visit the website.

essex.ac.uk/fees

For students commencing their studies at the University of Essex in the 2020-21 academic year, your fees will increase for each academic year of study. This annual increase will be 5% or the annual increase in the RPI-X index, whichever is the higher. If you'd like advice on whether you'd be classified as an international student in relation to your tuition fees, contact our Undergraduate Admissions Office.

E admit@essex.ac.uk

The UK Council for International Student Affairs (UKCISA) can also give you advice and information on fee statuses. Visit their website for more information.

ukcisa.org.uk

If you require a Tier 4 visa to study in the UK, as part of the visa application process, you may be asked to produce evidence of your ability to pay tuition fees and to cover living expenses during the course. There's more information on our website about the current Home Office requirements.

essex.ac.uk/immigration

Scholarships and bursaries

We offer financial packages to support students, including those from lower income households. Additional support for UK students includes bursaries for care leavers and students with refugee status.

For information about funding opportunities visit our website.

essex.ac.uk/ug/scholarship

Previous study

If you have previously studied at a higher education institution, this may affect the amount of financial support available to you. To find out more about this, or if you've got any other questions, contact our Student Funding Team.

E funding@essex.ac.uk

Living expenses

At January 2019 prices, the minimum sums required for living expenses (for a single student) in 2019-20 are estimated to be between £7,745 and £13,418 for a 39-week course. This includes the cost of a single room in University-provided accommodation, as well as an allowance to cover food and other necessary expenses. For more information check our cost of living webpage.

essex.ac.uk/living-costs

At Essex, there are lots of opportunities to work part-time while you study if you need a bit of extra cash – see page 44 for more information on jobs offered within the University.

Accounting, Finance and Banking	78	Human Rights	126
Acting, Producing and Stage Management	80	Journalism	128
Actuarial Science	82	Latin American Studies	130
American Studies	84	Law	132
Art History	86	Liberal Arts	134
Biochemistry	88	Literature	136
Biological Sciences	90	Marine Biology	138
Biomedical Science	92	Marketing	140
Business, Management and Entrepreneurship	94	Mathematics	142
Childhood Studies	96	Modern Languages	144
Computer Science	98	Nursing: Adult or Mental Health	146
Creative Writing	100	Occupational Therapy	148
Criminology	102	Oral Health Science	150
Data Science	104	Philosophy	152
Drama	106	Physiotherapy	154
Economics	108	Politics and International Relations	156
Electronic Engineering	110	Psychoanalytic Studies/Therapeutic Care	158
English Language and Linguistics	112	Psychology	160
European Studies	114	Social Work	162
Film Studies	116	Sociology	164
Genetics	118	Speech and Language Therapy	166
Global Studies	120	Sport, Exercise, Performance and Coaching	168
History	122	Sports Therapy	170
Hospitality and Events Management	124	Essex Pathways	172

SUBJECTS



HEY YOU, READ THIS.

It's very important.

Please check the following details before making a decision on your course.



If you need information on additional GCSE and English Language requirements, see page 70.



If your course requires grade B/5 or C/4 in GCSE Mathematics there's no need to take further Maths study as part of the International Baccalaureate if you have already achieved the required grade in your GCSE.



We accept International Baccalaureate Middle Years Maths or Science where these are listed as GCSE requirements. We require grade 4 which is equivalent to GCSE C/4 and grade 5 which is equivalent to GCSE B/5.



Many courses are available with a Year 0 pathway (a foundation year). UK and EU students see page 172, international students see University of Essex International College on page 181.



First-language speakers of a modern language will not be able to study that language as part of a Modern Language degree.



To study Portuguese as a major language, applicants must have either an A-level (or equivalent) in Italian, Spanish or Portuguese, or have first-language fluency in Italian, Romanian or Spanish.

ACCOUNTING, FINANCE AND BANKING



WHY ESSEX?

- 1** We're an Investment Management Certificate (IMC) Advantage Partner so we can award an IMC Exams scholarship to three exceptional students every year
- 2** Our professionally accredited courses may exempt you from a number of further professional exams, including ACCA, ICAEW and CIMA
- 3** Kickstart your career and take a placement year with support from our award-winning Placements Team (NUE 2018)

POPULAR MODULES

- Auditing
- Behavioural Finance
- Corporate Governance
- Financial Modelling
- Options and Futures

If you're going to study accounting, finance or banking, you have to know that it's going to be about numbers. Essex Business School is staffed by a deft community of financial problem fixers who will help you master your grasp of the numbers, ensuring you go on to make responsible and profitable business decisions.



"I was fascinated that Essex Business School has a Bloomberg facility for students where they can trade, a stunning building and many platforms to help students in both the academic as well as the social life."

Soukayna Hachimi, BSc Banking and Finance including Placement Year

COURSE	UCAS CODES			ENTRY REQUIREMENTS
	3 years	+ year abroad	+ placement year	
BSc Accounting	N400	N402	N404	A-levels: BBB GCSE: Mathematics C/4 IB: 30 points, including Standard Level Mathematics or Maths Studies grade 4, if not taken at Higher Level BTEC: DDD, depending on subject studied – advice on acceptability can be provided
BSc Accounting and Finance*	N420	NNK3	N422	
BSc Accounting and Management	NN24	NNK2	NN27	
BSc Accounting with Economics	NL41	NKL1	NL44	
BSc Banking and Finance*	N390	NH90	N392	
BSc Finance*	N300	N302	N304	
BSc Finance and Management*	N344	N345	N346	

*Awarded with Applied Quantitative Methods qualifier which means you can take a specific degree path to graduate with enhanced quantitative skills. Some courses are available with a foundation year. See page 172 on Essex Pathways for details.

For all the information you need on courses, modules and graduate destinations, go to

essex.ac.uk/ug/accounting

ACTING, PRODUCING AND STAGE MANAGEMENT

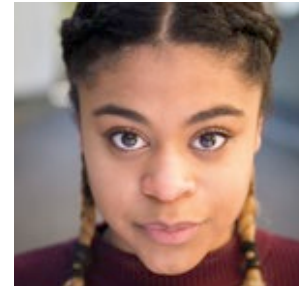
WHY ESSEX?

- 1 East 15 is a member of the Federation of Drama Schools
- 2 We give you access to a substantial network of respected industry practitioners
- 3 We are ranked first for dance, drama and cinematography (TGUG 2019)

POPULAR MODULES

- Actor and Text
- Music and Singing
- Stage Combat
- Lighting and Sound
- Production Arts

Personal discovery. Intuition. Technical skill. These are the key elements of an actor's craft and our guiding principles. We will provide you with the skills and confidence you need to build a successful career in the performing arts, whether you work onstage or behind the scenes.



“When I was growing up I always wanted to learn martial arts, weapon training and acting. I chose Essex as it is the only course like it in Europe.”

Melaina Pecorini Agyei, BA Acting and Stage Combat

COURSE	UCAS CODES		ENTRY REQUIREMENTS
	3 years	1 year	
LOUGHTON CAMPUS			
BA Acting	W411		Successful audition, plus A-levels: CDD, or the equivalent in UCAS tariff points, to include 2 full A-levels BTEC: MMP
BA Acting (International)	W83A		
BA Acting and Contemporary Theatre	W441		
BA Stage and Production Management	DKAS		Successful interview and technical aptitude workshop, plus A-levels: CDD, or the equivalent in UCAS tariff points, to include 2 full A-levels BTEC: MMP
Cert HE Theatre Arts		W410	Successful audition, plus A-level: E or equivalent qualification
International Foundation in Acting*		W415	International Foundation in Acting is open to EU and international applicants only
SOUTHEND CAMPUS			
BA Acting and Community Theatre	W496		Successful audition, plus A-levels: CDD, or the equivalent in UCAS tariff points, to include 2 full A-levels BTEC: MMP
BA Acting and Stage Combat	W412		Successful physical workshop audition, plus A-levels: CDD, or the equivalent in UCAS tariff points, to include 2 full A-levels BTEC: MMP
BA Physical Theatre	W494		
BA World Performance	W495		Successful audition (W495) or interview (W900), plus A-levels: BBC, or the equivalent in UCAS tariff points, to include 2 full A-levels
BA Creative Producing (Theatre and Short Film)	W900		BTEC: DDM IB: 28 points
Cert HE Theatre Arts		W410	Successful audition, plus A-level: E or equivalent qualification

*subject to approval.

If you are unable to physically attend an audition we are sometimes able to accept video auditions. For more details visit our website.

For all the information you need on courses, modules and graduate destinations, go to

essex.ac.uk/ug/act-prod-stage

ACTUARIAL SCIENCE

Actuarial science teaches you the art of turning risks into opportunities and encourages you to delve into your passions for mathematics and practical problem-solving. You'll apply mathematical and statistical skills to tackle insurance, finance, commerce and government challenges.

Throughout your course you'll explore probability, statistics, financial reporting, portfolio management and contingencies. Our blend of solid mathematics, an understanding of real-world financial issues and computing skills provide you with the full range of core skills essential in this profession.

"I learnt teamwork and organisational skills, while the diversity of students from all over the globe promised an exciting social life."

Karl Mike Fondop Talom, BSc Actuarial Science
Now a professional footballer with Wrexham AFC

WHY ESSEX?

- 1** BSc Actuarial Science is accredited by the Institute and Faculty of Actuaries, which provides exemption from some professional examinations
- 2** You have access to ultramodern facilities in our new STEM Centre where you can collaborate in dedicated labs
- 3** We are ranked top 15 in the UK for mathematics (Guardian University Guide 2019)

POPULAR MODULES

- Financial Mathematics
- Corporate Finance
- Survival Analysis
- Stochastic Processes
- Microeconomics
- Macroeconomics

COURSE	UCAS CODES			ENTRY REQUIREMENTS
	3 years	+ year abroad	+ placement year	
BSc Actuarial Science	N323	N324	N233	A-levels: BBB, including Mathematics Please note that we are unable to accept A-level Use of Mathematics in place of A-level Mathematics IB: 30 points, including Higher Level Mathematics grade 5
BSc Economics and Mathematics	LG11	LG1C	L1G2	
BSc Finance and Mathematics	GN13	GN1H	GN15	

Some courses are available with a foundation year. See page 172 on Essex Pathways for details.

For all the information you need on courses, modules and graduate destinations, go to

essex.ac.uk/ug/actuarial

AMERICAN STUDIES

WHY ESSEX?

- 1** We're 2nd in the UK according to the Guardian University Guide 2019 and top 15 according to the Times Good University Guide 2019
- 2** We have always been the highest-rated politics department in the UK (REF 2014, mainstream universities, THE 2014)
- 3** You can study abroad at a wide range of excellent partner universities across the USA

POPULAR MODULES

- The Great American Experiment
- United States Literature
- Crisis of the American Idea
- American Society: Ethnic Encounters in the Making of the USA
- Women, Gender and Sexuality in US History

Founded on the principles of 'life, liberty and the pursuit of happiness', the United States is a collision of star-spangled ideals and problematic realities. Does the election of Donald Trump represent the nation's descent into crisis, or will it prove – as his supporters claim – the making of a stronger America?

Connect topics and approaches from politics, literature, film, art, economics, history and philosophy to develop your knowledge of a country with unparalleled cultural and diplomatic influence. Your studies here and in the US will build your understanding of the changing face of the USA.

"The interdisciplinary nature of my degree gave me a wide range of perspectives and skills. I most enjoyed my time abroad studying in Washington DC!"

Francesca Burgess, BA American Studies and MA Theory and Practice of Human Rights

COURSE	UCAS CODES		ENTRY REQUIREMENTS
	3 years including term abroad	+ year abroad	
BA American Studies (United States)	T700	T708	A-levels: BBB, including an essay-based subject
BA American Studies (United States) with Film	T7P3	T7W6	IB: 30 points, including a Higher Level essay-based subject grade 5
BA Criminology and American Studies	MT2R	MT27	BTEC: DDM, depending on subject studied – advice on acceptability can be provided

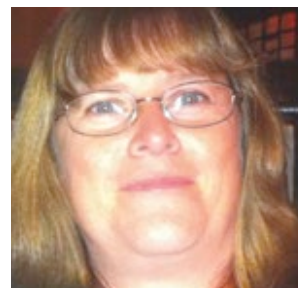
Some courses are available with a foundation year. See page 172 on Essex Pathways for details.

For all the information you need on courses, modules and graduate destinations, go to

essex.ac.uk/ug/american

ART HISTORY

Our world is now dominated and driven by visual media; understanding it has never been more challenging. You will gain a foundation in art and architecture from the Renaissance to the present day, and also learn about examples of visual culture that are often overlooked. We house the most comprehensive collection of art from Latin America in Europe and our academics curate high-profile exhibitions including Dr Gavin Grindon's exhibitions at Banksy's Dismaland and Walled Off Hotel, and Disobedient Objects at the V&A.



"I not only gained a degree from university, but I learnt to work to the best of my abilities, to pay attention to detail, work to deadlines and to believe in myself!"

Carole Garrett, BA Art History
Now owns Eldo Bar, a live music venue

WHY ESSEX?

- 1 We are one of the few top-ranked art history schools in the UK to offer BA Curatorial Studies
- 2 We're among the top 30 universities in the UK (TGUG 2019)
- 3 We are 1st nationally for overall student satisfaction in art history (NSS 2018)

POPULAR MODULES

- Art, Sex and Death
- Space, Place and Locality
- Art and Power
- Visualising Bodies
- Photography in History

COURSE	UCAS CODES		ENTRY REQUIREMENTS
	3 years	+ year abroad	
BA Art History	V314	V35A	A-levels: BBB IB: 30 points BTEC: DDM, depending on subject studied – advice on acceptability can be provided
BA Art History and History	VV31	VV3C	
BA Curatorial Studies	V351	V352	
BA Film Studies and Art History	VW36	PV33	
BA Literature and Art History	QV23	QV32	
BA Art History and Modern Languages		VR39	
BA Art History with Modern Languages		V3R9	
BA Philosophy and Art History	VV53	VV5H	

Some courses are available with a foundation year. See page 172 on Essex Pathways for details.

For all the information you need on courses, modules and graduate destinations, go to

essex.ac.uk/ug/art-hist

BIOCHEMISTRY



WHY ESSEX?

- 1** Undertake practical work in our large cutting-edge research labs in our brand new STEM Centre
- 2** Our teaching is underpinned by research – new ideas and theories are tested in the classroom
- 3** 92% of students in our School of Life Sciences expressed overall satisfaction with their course (NSS 2018)

POPULAR MODULES

- Molecular Cell Biology
- Genetics and Evolution
- Microbiology
- Metabolism
- Rational Drug Design

Every component of life is beautifully connected and studying biochemistry allows you to appreciate the processes of life at a molecular level. At Essex you are taught by an international team of world-leading experts at the forefront of their fields. In your final year you contribute to ongoing projects in our state-of-the-art research labs.



“I had a great relationship with my research project supervisor, he was patient and always willing to explain. Essex has helped me grow in ways I didn’t know were possible.”

Bethany Hampshire, BSc Biochemistry
Now studying for a PhD in Physics

COURSE	UCAS CODES			ENTRY REQUIREMENTS
	3 years	+ year abroad	+ placement year	
BSc Biochemistry	C700	C703	C701	<p>A-levels: BCC, including Chemistry and a second science or Mathematics</p> <p>GCSE: Mathematics C/4</p> <p>IB: 28 points, including Higher Level Chemistry and a second science or Mathematics grade 5, plus Standard Level Mathematics or Maths Studies grade 4, if not taken at Higher Level</p> <p>BTEC: DDD, depending on subject and units studied – advice on acceptability can be provided</p>

This course is available with a foundation year. See page 172 on Essex Pathways for details.

For all the information you need on courses, modules and graduate destinations, go to

essex.ac.uk/ug/biochem

BIOLOGICAL SCIENCES



WHY ESSEX?

- 1** Research the broad diversity of life, from molecules to field-based ecology, and tailor your degree to your specific interests
- 2** Conduct your final-year research project within one of our purpose-built research laboratories
- 3** We emphasise employability and have strong links with industry, government and non-governmental organisations (NGOs)

POPULAR MODULES

- Plant Biology and Ecosystems
- Animal Behaviour
- Marine Ecology
- Immunity in Health and Disease
- Stem Cell Biology

There has never been a more exciting time to be a biologist. Integrative biology brings together all the tools of modern biology to unravel the complexity of living systems. It covers the breadth of biology from molecules and cells to whole organisms and ecosystems.

“Of course I enjoyed the amazing nights out at Essex. But I really enjoyed my course, especially working in the amazing laboratories.”

Christiana Gavriel, BSc Biological Sciences
Now studying MSc Clinical Embryology

COURSE	UCAS CODES			ENTRY REQUIREMENTS
	3 years	+ year abroad	+ placement year	
BSc Biological Sciences	C100	C101	C102	<p>A-levels: BCC, including Biology at grade B</p> <p>GCSE: Mathematics C/4</p> <p>IB: 28 points, including Higher Level Biology grade 5 and Standard Level Mathematics or Maths Studies grade 4, if not taken at Higher Level</p> <p>BTEC: DDD, depending on subject and units studied – advice on acceptability can be provided</p>

This course is available with a foundation year. See page 172 on Essex Pathways for details.

For all the information you need on courses, modules and graduate destinations, go to

essex.ac.uk/ug/bio-sci

BIOMEDICAL SCIENCE



Biomedical science applies the concepts of biochemistry and cell biology to the study of disease. You learn about the onset, progression, diagnosis and treatment of diseases and are taught by research-active academic experts. You undertake practical work in our state-of-the-art labs, enabling you to gain the skills needed for further study or a career within the profession.



“My degree was exciting, thought-provoking and challenging, while my career plans were considered as important as my studies.”

Judith Owusuwaah, BSc Biomedical Science
Now a Laboratory Scientist at Anthony Nolan

WHY ESSEX?

- 1** You have the opportunity to spend a year working in an NHS lab
- 2** Our course is accredited by the Institute of Biomedical Science
- 3** 92% of students in our School of Life Sciences expressed overall satisfaction with their course (NSS 2018)

POPULAR MODULES

- Anatomy and Physiology
- Genetics and Evolution
- Medical Microbiology
- Clinical Biochemistry
- Molecular Basis of Cancer

COURSE	UCAS CODES			ENTRY REQUIREMENTS
	3 years	+ year abroad	+ placement year	
BSc Biomedical Science	B990	B995	B999	A-levels: BCC, including Chemistry or Biology and a second science or Mathematics GCSE: Mathematics C/4 IB: 28 points, including Higher Level Chemistry or Biology and a second science or Mathematics grade 5, plus Standard Level Mathematics or Maths Studies grade 4, if not taken at Higher Level
BSc Biomedical Science (Integrated NHS)			B991	BTEC: DDD, depending on subject and units studied – advice on acceptability can be provided

Some courses are available with a foundation year. See page 172 on Essex Pathways for details.

For all the information you need on courses, modules and graduate destinations, go to

essex.ac.uk/ug/biomed-sci

BUSINESS, MANAGEMENT AND ENTREPRENEURSHIP

Management theory. Globalisation. Entrepreneurial innovation. These are the pillars of the business, management and entrepreneurship courses at Essex Business School where we inspire you to be analytical and innovative in response to the issues affecting our global economy. Be bold and be creative. Question assumptions and act ethically. These are the fundamentals you will learn to help you transform the business world and perhaps even build your own business empire.

“Essex has a reputation for education excellence in my country and was recommended to me. The independent research project in my final year gave me the opportunity to put knowledge into practice. It helped me further develop vital employability skills.”

Andreas Aloneftis, BSc Business Management

WHY ESSEX?

- 1** Learn from internationally respected academics and practitioners to ensure your education is always up-to-date with the fast-changing world of business
- 2** Take advantage of a placement or study abroad year to build your professional portfolio and explore the world
- 3** We focus on ethical management so that you can understand sustainable business practice

POPULAR MODULES

- Digital Marketing and Social Media
- Business Ethics
- E-commerce
- Brand Management
- Human Resource Management

COURSE	UCAS CODES			ENTRY REQUIREMENTS
	3 years	+ year abroad	+ placement year	
COLCHESTER CAMPUS				
BSc Business Management	N200	N202	N204	A-levels: BBB GCSE: Mathematics C/4 IB: 30 points, including Standard Level Mathematics or Maths Studies grade 4, if not taken at Higher Level BTEC: DDD, depending on subject studied – advice on acceptability can be provided
BSc Management and Marketing	NN25	NNF5	NN2M	
BA Business Management and Modern Languages		NR19		
BA Business Management with a Modern Language		N1R9		
SOUTHEND CAMPUS				
BBA Business Administration	N100	N110	N103	
BSc International Business and Entrepreneurship	N120	N121	N123	
BSc Tourism Management	N832	N833	N834	

Some courses are available with a foundation year. See page 172 on Essex Pathways for details.

For all the information you need on courses, modules and graduate destinations, go to

essex.ac.uk/ug/business

CHILDHOOD STUDIES



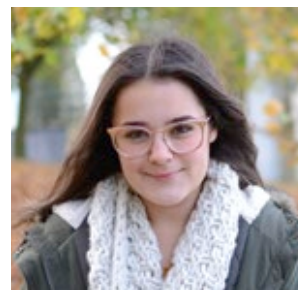
WHY ESSEX?

- 1** Our staff bring clinical expertise to their teaching, including direct experience of working with children in residential care and mental health settings
- 2** Access to free evening Open Seminars on topics relevant to childhood studies, mental health and psychosocial studies
- 3** Our students learn in small groups with expert practitioners and academics.

POPULAR MODULES

- Child Development
- Developmental Trauma, Autism and ADHD
- Where the Wild Things Are: Children in Literature
- Social History of Childhood
- Counselling Skills

Children today face many challenges, from coping with unprecedented access to online media, to negotiating a more culturally diverse society. Many thrive whatever their circumstances; others find life more difficult to manage. As a graduate of Childhood Studies you can make a difference to children's early experiences. Discover what shapes children's behaviour and their sense of identity. During your degree you will build psychological, sociological and psychoanalytic skills, laying the foundation for a career working with children.



"I chose Childhood Studies because I've worked with kids for years and it's something I'm very fond of. Working with autistic children is the main focus of where I want to go with my degree."

Victoria Lanum, BA Childhood Studies

COURSE	UCAS CODES			ENTRY REQUIREMENTS
	3 years	+ year abroad	+ placement year	
BA Childhood Studies	L520	L521	L522	A-levels: BBB IB: 30 points BTEC: DDM, depending on subject studied – advice on acceptability can be provided Access to HE Diploma: 45 level 3 credits at merit or above (in relevant pathway) Other qualifications (including vocational qualifications) may also be accepted. Please contact us for more information. E admit@essex.ac.uk

This course is available with a foundation year. See page 172 on Essex Pathways for more details.

For all the information you need on courses, modules and graduate destinations, go to

essex.ac.uk/ug/childhood

COMPUTER SCIENCE



WHY ESSEX?

- 1** We are home to many of the world's top scientists and engineers in the field of computer science
- 2** We specialise in areas as diverse as assistive technologies, computer games, artificial intelligence, evolutionary computation, big data and robotics
- 3** We offer exceptional purpose-built facilities including state-of-the-art labs, including our robot arena

POPULAR MODULES

- Computer Game Design
- Artificial Intelligence
- Virtual Worlds
- Software Engineering
- Computer Security

Our lives would be unrecognisable without computing. Computer games create imaginary worlds; AI and robotics enable you to understand how things and people behave and evolve. Social media, face recognition, cloud computing – all of these are computer science.



“Through my degree, I learnt about core concepts such as data structures, algorithms and large-scale software solutions. I now develop innovative mobile and web applications.”

**James Warner, BSc Computer Games
Now a Senior Software Developer for Raspberry Systems**

COURSE	UCAS CODES			ENTRY REQUIREMENTS
	3 years	+ year abroad	+ placement year	
BSc Computer Science	G400	G401	I101	A-levels: BBB
BSc Computer Games	G610	G612	I610	GCSE: Mathematics C/4
BEng Computer Networks	G420	G421	I120	IB: 30 points, including Standard Level Mathematics or Maths Studies grade 4, if not taken at Higher Level
BEng Computer Systems Engineering	H650	H651	HP50	BTEC: DDM, depending on subject studied – advice on acceptability can be provided
BEng Computers with Electronics	GH4P	GH4Q	I1H6	A-levels: ABB GCSE: Mathematics C/4 IB: 32 points, including Standard Level Mathematics or Maths Studies grade 4, if not taken at Higher Level BTEC: DDD, depending on subject and units studied – advice on acceptability can be provided
MSci Computer Science (Integrated Masters)	G402 (4 years)		I100	

Some courses are available with a foundation year. See page 172 on Essex Pathways for details.

Degree apprenticeships are available in this subject area.

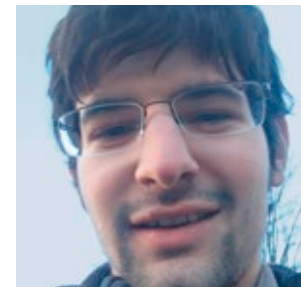
For more information visit www1.essex.ac.uk/apprenticeships/apprentices

For all the information you need on courses, modules and graduate destinations, go to

essex.ac.uk/ug/comp-sci

CREATIVE WRITING

Are writers born or made? Your imagination is the starting point. But to write is to read widely, listen well and work hard. At Essex we nurture our creative writers with an inspirational reading list. We teach you the skills you need to effectively express your ideas. And we help you find and define your voice, whether that's through poetry, prose, drama – or something else entirely. We don't believe good writers are simply born. They're made at Essex.



“Essex is an amazing environment in which to become a better writer. Feedback, deadlines and range of forms and genres - it humbles, instills discipline and broadens your interests.”

Andre Miguel Antunes Ferreira,
BA Creative Writing

WHY ESSEX?

- 1 We have been the home of great writers, including Robert Lowell, Michèle Roberts, Nobel Prize nominee Nuruddin Farah and Booker Prize winner Ben Okri, and we uphold a tradition of encouraging creative practice in the arts
- 2 You will have the opportunity to see your work published in our anthology *Creel* and take part in the Essex Book Festival
- 3 You will be taught by practising writers who encourage innovation, experimentation and originality in writing and thinking

POPULAR MODULES

- Writing for the Radio
- Creative Non-Fiction
- Myth and the Creative Process
- Writing Science Fiction
- Writing Poetry

COURSE	UCAS CODES			ENTRY REQUIREMENTS
	3 years	+ year abroad	+ placement year	
BA Creative Writing	W800	W801	W803	A-levels: BBB, including one essay-based subject
BA Literature and Creative Writing	QW30	QW31	QW33	IB: 30 points, including a Higher Level essay-based subject grade 5
BA Film and Creative Writing	PW38	PWH8	PW39	BTEC: DDM, depending on subject studied – advice on acceptability can be provided

Some courses are available with a foundation year. See page 172 on Essex Pathways for details.

For all the information you need on courses, modules and graduate destinations, go to

essex.ac.uk/ug/creative



CRIMINOLOGY



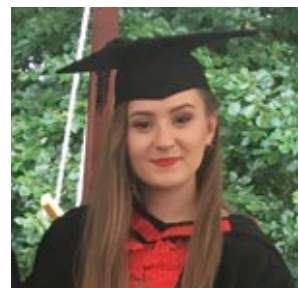
WHY ESSEX?

- 1** We're top 20 for criminology (TGUG 2019)
- 2** You are taught by staff who conduct world-leading research
- 3** Develop the critical and inventive-thinking skills essential for many graduate jobs

POPULAR MODULES

- Media, Culture and Society
- Race, Class and Gender
- Policing, Punishment and Society
- Globalisation and Crime
- Psychiatry and Mental Illness

If you're interested in building a better, fairer society, criminology may be the course for you. You will engage with some of the most pressing dilemmas facing society today around crime, justice, social control, punishment, rights and citizenship. So be warned – adopting a criminological imagination will make you see your world in a completely new way.



“Essex really encouraged voluntary work, so I started at a domestic abuse charity and a rape helpline... Now I am training to become a Police Constable.”

Gabrielle Johnson, BA Criminology

COURSE	UCAS CODES			ENTRY REQUIREMENTS
	3 years	+ year abroad	+ placement year	
BA Criminology	M900	M901	M904	
BA Criminology with Criminal Law	LM11	LM12	LM13	
BA Criminology with Social Psychology	L3C8	LHC8	L3H8	A-levels: BBB IB: 30 points
BA Criminology with Counselling Skills	L333	L334	L335	BTEC: DDD, depending on subject studied – advice on acceptability can be provided
BA Sociology and Criminology	LM39	LMH9	LM38	
BA Criminology and American Studies*	MT2R	MT27		A-levels: BBB, including one essay-based subject IB: 30 points, including a Higher Level essay-based subject grade 5
BA Journalism and Criminology	P550	P552	P551	BTEC: DDD, depending on subject studied – advice on acceptability can be provided

*includes a term abroad.

Some courses are available with a foundation year. See page 172 on Essex Pathways for details.

For all the information you need on courses, modules and graduate destinations, go to

essex.ac.uk/ug/criminology

DATA SCIENCE



WHY ESSEX?

- 1** We're focused on employability – data scientists are required in every sector, so our courses can open the door to almost any industry
- 2** Possess truly interdisciplinary knowledge and graduate with skills in the areas of data science, mathematics and statistics
- 3** You will put solid theory in to practice and be encouraged to solve real-world problems and challenges

POPULAR MODULES

- Web Development
- Statistics
- Artificial Intelligence
- Survival Analysis
- Software Engineering

Data is the new lifeblood of our society. From medicine to government offices, and market research to the environment, the collection and analysis of data is crucial to understanding how to improve, create and guide products and services. Data science is about doing detective work, and your investigations will inform important decisions and predict new trends.



“Data science is the perfect subject for people who enjoy both computing and maths. Essex partners with a lot of businesses, and gives students opportunities to gain highly useful work experience!”

Andreas Loucas, BSc Data Science and Analytics

COURSE	UCAS CODES			ENTRY REQUIREMENTS
	3 years	+ year abroad	+ placement year	
BSc Data Science and Analytics	I1G3	I1GC	I1GB	A-levels: BBB, including Mathematics Please note that we are unable to accept A-level Use of Mathematics in place of A-level Mathematics
BSc Mathematics and Statistics	9K12	5B43	9K13	IB: 30 points, including Higher Level Mathematics grade 5
BSc Mathematics and Computing	G1GK	G1G4	G1IK	

Some courses are available with a foundation year. See page 172 on Essex Pathways for details.

For all the information you need on courses, modules and graduate destinations, go to

essex.ac.uk/ug/data-sci

DRAMA



WHY ESSEX?

- 1** We're ranked 1st in the Times Good University Guide 2019 and 2nd in the Guardian University Guide 2019 for drama in the UK
- 2** 96% of our drama students expressed overall satisfaction with their course (NSS 2018)
- 3** Our lecturers are respected, working theatre professionals and our Lakeside Theatre is a performance venue with an international reputation

POPULAR MODULES

- Tragedy
- Gender in Performance
- Theatre and Human Rights
- American Film Authors
- Writing for Theatre

Studying drama at Essex is a transformative experience that will equip you for the future you want. Through a combination of workshops and seminars, you receive a thorough grounding in classical and contemporary texts, as well as practices that are key to theatre and performance. Our varied modules include: devising; playwriting; tragedy; and theatre in education. We are committed to furthering the cause of human rights through drama – in our teaching, research and practice. We think theatre can change the world.



“There was never any doubt that I would study drama, but my degree helped me to determine what I wanted to do with my career... Essex pushed me to be the best I can be.”

Grace Durbin, BA Drama
Now a performing arts practitioner and teacher

COURSE	UCAS CODES			ENTRY REQUIREMENTS
	3 years	+ year abroad	+ placement year	
BA Drama	W401	W402	W403	A-levels: BBB, including one essay-based subject IB: 30 points, including a Higher Level essay-based subject grade 5
BA Drama and Literature	QW24	WQ42	QW25	BTEC: DDM, depending on subject studied – advice on acceptability can be provided

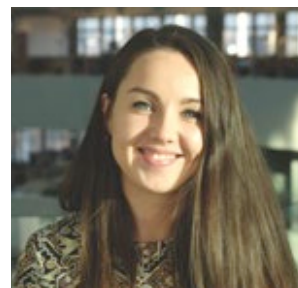
Some courses are available with a foundation year. See page 172 on Essex Pathways for details.

For all the information you need on courses, modules and graduate destinations, go to

essex.ac.uk/ug/drama

ECONOMICS

Financial crisis. Unemployment. Immigration. Economics at Essex focuses on the material wellbeing of human societies and challenges the standard paradigms of economics. By asking difficult questions we break intellectual boundaries, pioneering solutions to issues of global concern.



“If I had to go back to university I would choose to study Economics again. It’s a smart decision as it’s a broad subject so you learn a lot.”

Evelina Kalkauskaite, BSc Economics

WHY ESSEX?

- 1** We’re ranked top 20 in the UK for economics (Guardian University Guide 2019)
- 2** We give you diverse employment potential and the chance to meet future employers
- 3** Our students love it here – we’re 4th nationally for overall student satisfaction in economics (NSS 2018)

POPULAR MODULES

- International Trade
- Environmental Economics
- Economics of the European Union
- Microeconomics
- Macroeconomics

COURSE	UCAS CODES			ENTRY REQUIREMENTS
	3 years	+ year abroad	+ placement year	
BA Economics	L100	L106	0F66	A-levels: BBB
BSc Economics	L101	L107	0E45	GCSE: Mathematics B/5
BA Financial Economics	L111	L195	5A84	IB: 30 points, including Standard Level Mathematics or Maths Studies grade 5, if not taken at Higher Level
BSc Financial Economics	L114	L194	0Q64	
BA International Economics	L115	L163	9O47	BTEC: DDD, depending on subject studied – advice on acceptability can be provided
BSc International Economics	L116	L162	5H18	
BA Management Economics	L108	L192	9L11	See L100 above, plus B in A-level Mathematics (or equivalent)
BSc Management Economics	L109	L193	5M00	
BSc Economics with Mathematics	L1G1	L1GC	L1G3	See L100 above, but C/4 in GCSE Mathematics
BA Economics with a Modern Language	L1V0	L1R0		
BSc Economics with Computing	LG01	LG02	LG03	See L100 above, but C/4 in GCSE Mathematics
BSc Economics with Psychology	C814	C815	C816	
BA Economics with Psychology	C841	C851	C861	
BA Financial Economics and Accounting	L148	L149	L147	
BA History and Economics	LV11	VL11	V1L1	
BA Business Economics	LN10	LN11	LN12	
BA Journalism and Economics	P560	P562	P561	See journalism page 128

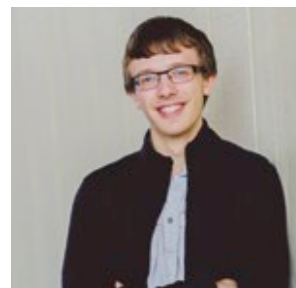
Some courses are available with a foundation year. See page 172 on Essex Pathways for details.

For all the information you need on courses, modules and graduate destinations, go to

essex.ac.uk/ug/economics

ELECTRONIC ENGINEERING

Electronics is essential to our modern world of instant global communication. The internet, innovative telecommunications and powerful, inexpensive computing have all been realised through advances in electronics. Our students are the people who develop the technology we use in our daily lives.



“My designs are now being used around the world in large companies such as Ford and IBM.”

Matthew Evans, BEng Electronic Engineering

WHY ESSEX?

- 1** You gain professional IET accreditation – the basis for chartered engineer status
- 2** We're top 15 for electronic engineering (TGUG 2019)
- 3** We offer exceptional purpose-built facilities, equipped with the latest hardware and software tools

POPULAR MODULES

- Digital Electronic Systems
- Mobile Robotics
- Signal Processing
- Telecommunication Principles
- Engineering Mathematics

COURSE	UCAS CODES			ENTRY REQUIREMENTS
	3 years	+ year abroad	+ placement year	
BEng Electronic Engineering	H610	H611	HP10	A-levels: BBB, including Mathematics GCSE: Science C/4
BEng Communications Engineering	H641	HQ41	HPK1	IB: 30 points, including Higher Level Mathematics grade 5 and Standard Level Science grade 4
BEng Robotic Engineering	H615	H616	H617	BTEC: DDM, depending on subject and units studied – advice on acceptability can be provided
BEng Mechatronic Systems*	H730	H731	H732	
MEng Electronic Engineering (Integrated Masters)	H613 (4 years)		H614	A-levels: ABB, including Mathematics GCSE: Science C/4 IB: 32 points, including Higher Level Mathematics grade 5 and Standard Level Science grade 4
MEng Communications Engineering (Integrated Masters)	H642 (4 years)			BTEC: DDD, depending on subject and units studied – advice on acceptability can be provided

*subject to approval.
Some courses are available with a foundation year. See page 172 on Essex Pathways for details.

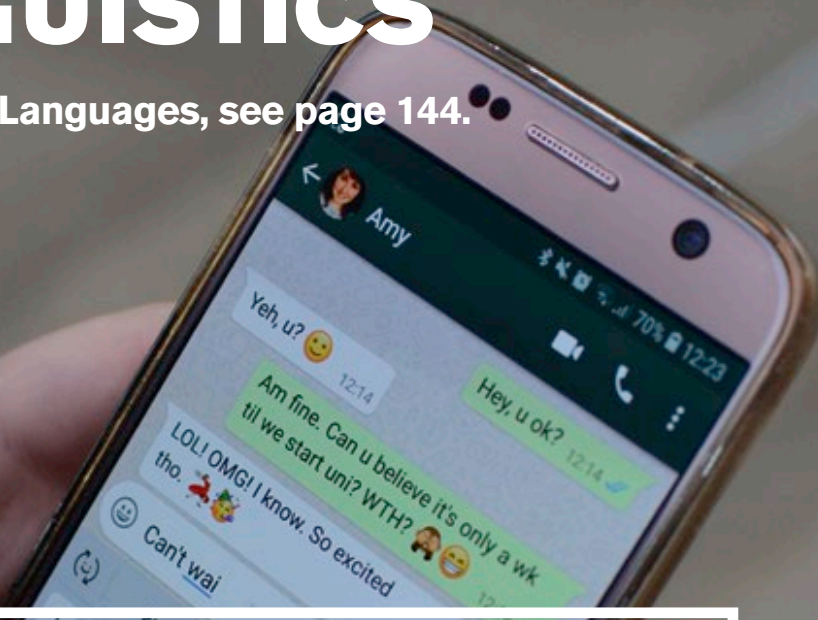
Degree apprenticeships are available in this subject area.
For more information visit www1.essex.ac.uk/apprenticeships/apprentices

For all the information you need on courses, modules and graduate destinations, go to

essex.ac.uk/ug/elec-engineering

ENGLISH LANGUAGE AND LINGUISTICS

For Modern Languages, see page 144.



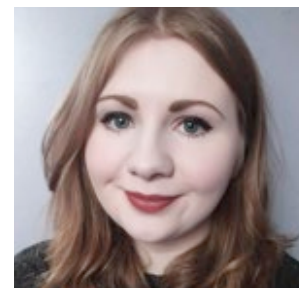
WHY ESSEX?

- 1** You are taught by lecturers who are internationally recognised for their linguistics research
- 2** Join our diverse community of students from all corners of the globe – we are the world in one place
- 3** We give you the option to work abroad, or study overseas at a partner university of your choice

POPULAR MODULES

- Conversation and Social Interaction
- Psycholinguistics
- Semantics and Pragmatics
- First Language Acquisition
- Language Variation and Change

Everything starts with language. At Essex we want to decipher this uniquely human phenomenon. We explore language from all angles such as: how language is acquired and developed in childhood, how different dialects develop and are perceived in society and how language is used in the media, courtrooms and classrooms. Our students gain a variety of skills valued by a broad range of employers, from how we use language to convey personal identity, to the skills you need for Teaching English as a Foreign Language (TEFL).



“The Language and Linguistics staff are incredibly knowledgeable. I now work for an international publishing company and feel my course gave me the confidence to succeed!”

Kirsten Alexander, BA English Language and Linguistics

COURSE	UCAS CODES			ENTRY REQUIREMENTS
	3 years	+ year abroad	+ placement year	
BA Linguistics	Q100	Q101	Q103	
BA English Language and Linguistics	QQ13	QQ3D	QQ15	
BA English Language and Literature	QQ23	QQ32	QQ35	A-levels: BBB IB: 30 points
BA English Language with Media Communication*	QP10	QP11	QP12	BTEC: DDD, depending on subject studied – advice on acceptability can be provided
BA Teaching English as a Foreign Language (TEFL)	QX31	QXH1	QX51	
BA Modern Languages and English Language		RQ93		

*subject to approval.
Some courses are available with a foundation year. See page 172 on Essex Pathways for details.

For all the information you need on courses, modules and graduate destinations, go to

essex.ac.uk/ug/english-lang



EUROPEAN STUDIES

WHY ESSEX?

- 1** We have always been the highest-rated politics department in the UK (REF 2014, mainstream universities, Times Higher Education 2014)
- 2** You can study abroad at a wide range of excellent partner universities across Europe
- 3** You have the option to study a modern language as part of your degree

POPULAR MODULES

- Europe: Myth and Idea
- The Law of the EU
- Europe Transformed: 1450-1750
- European Art From Van Gogh to Klimt
- Supernatural and Natural Worlds in Early Modern Europe

The European Parliament in Strasbourg: graduates of European Studies will be equipped to negotiate and maintain lines of communication across the Channel.

There has never been a more important time to study Europe. Taking an innovative, interdisciplinary approach, combining subjects from across the humanities and social sciences, our students investigate and debate issues that are of vital importance to the future of the UK, Europe, and the world. If you want to make the most of a continent with a rich cultural heritage and be an activist within a changing political landscape, BA European Studies will equip you with skills you need to make a positive impact.

“European Studies gives you the opportunity to study exactly what you want. And it brings in all subjects that are important in society. Studying abroad is a great opportunity to experience another culture and country.”



Sofie Pindsle, BA European Studies
Now a coordinator at Circular Norway, a circular economy start-up

COURSES	UCAS CODES	ENTRY REQUIREMENTS
	4 years including year abroad	
BA European Studies	R000	
BA European Studies with French	R9R1	
BA European Studies with German	R9R2	A-levels: BBB
BA European Studies with Italian	R9R3	IB: 30 points
BA European Studies with Spanish	R9R4	BTEC: DDM, depending on subject studied – advice on acceptability can be provided
BA European Studies with Politics	R9L2	
BA European Studies and Modern Languages	R9T9	

Some courses are available with a foundation year. See page 172 on Essex Pathways for details.

For all the information you need on courses, modules and graduate destinations, go to

essex.ac.uk/ug/euro-studies

FILM STUDIES



If you have a natural curiosity for the world, our courses are ideal. We offer a dynamic programme of hands-on production experience matched with scholarly insights into cinema cultures, histories and theories. We offer an opportunity to look at cinema differently, exploring the medium in depth while enhancing critical and industry-specific skills. Our close links with film and TV industries mean excellent career prospects and a route to paid work experience – the perfect way to start building your showreel.

“The freedom to work independently on topics or stories that I'd created, with professional supervision is something incredible that I will never take for granted.”

Egle Evergreen Radziute, BA Film and Creative Writing
Now Videographer and Editor at Ptolemy Capital

WHY ESSEX?

- 1 We're ranked 1st for cinematics (TGUG 2019)
- 2 We're 1st nationally for overall student satisfaction in Film Studies (NSS 2018)
- 3 HD cameras, extensive editing facilities, a film library and a dedicated cinema are some of the tools you'll use every day

POPULAR MODULES

- Documentary Filmmaking
- Introduction to Screenwriting
- Introduction to Film Production
- Film and Propoganda
- Cultural Ideology and Film

COURSE	UCAS CODES			ENTRY REQUIREMENTS
	3 years	+ year abroad	+ placement year	
BA Film Studies	W620	P303	W623	A-levels: BBB, including one essay-based subject IB: 30 points, including a Higher Level essay-based subject grade 5 BTEC: DDM, depending on subject studied – advice on acceptability can be provided
BA Film Studies and Literature	QW26	PQ32	QW27	
BA Film and Creative Writing	PW38	PWH8	PW39	
BA American Studies (United States) with Film	T7P3	T7W6		

Some courses are available with a foundation year. See page 172 on Essex Pathways for details.

For all the information you need on courses, modules and graduate destinations, go to

essex.ac.uk/ug/film

GENETICS



WHY ESSEX?

- 1** We're in the top 20 nationally for overall student satisfaction in biology (NSS 2018)
- 2** Our students develop essential lab skills in gene manipulation, cloning, cancer biology, immunology and bioinformatics
- 3** You can gain valuable research experience by getting involved in cutting-edge project work

POPULAR MODULES

- Genetics and Evolution
- Molecular Cell Biology
- Genome Science
- Medical Genetics
- Issues in Biomolecular Science

Advances in genetics and genomics are transforming our understanding of biology and modern medicine. Explore the most intimate relationships between organisms revealed in their genetic code and the complexities of epigenetics with experts in the field. Investigate the transformative potential of applications of genetics in stem cell research and gene editing.

“I met some amazing lecturers that believed in me and pushed me to do my best. In my second year I conducted field experiments at the University of Illinois. It was an unforgettable experience.”

Elena Pelech, BSc Genetics
Now reading for a PhD at the University of Illinois

COURSE	UCAS CODES			ENTRY REQUIREMENTS
	3 years	+ year abroad	+ placement year	
BSc Genetics	C400	C402	C403	A-levels: BCC, including Biology at grade B GCSE: Mathematics C/4 IB: 28 points, including Higher Level Biology grade 5 and Standard Level Mathematics or Maths Studies grade 4, if not taken at Higher Level BTEC: DDD, depending on subject and units studied – advice on acceptability can be provided

This course is available with a foundation year. See page 172 on Essex Pathways for details.

For all the information you need on courses, modules and graduate destinations, go to

essex.ac.uk/ug/genetics

GLOBAL STUDIES



We need global thinking for global problems. The challenges facing the world today are profoundly international. From the migrant crisis to global warming, contemporary issues require graduates who bring a global perspective and broad, interdisciplinary skills to the table. With your grounding in politics, history, philosophy, sociology, economics and cultural studies, you will be able to untangle international relationships and discern how the effects of globalisation are experienced at a local level.



“I appreciate the array of modules, focussing on different aspects of globalisation, ranging from history and economics to film and languages.”

Elisabeth Leopoldeder, BA Global Studies

WHY ESSEX?

- 1** Global Studies offers a route into international relations, diplomacy and political and social activism
- 2** We have always been the highest-rated politics department in the UK (REF 2014, mainstream universities, THE 2014)
- 3** Learn to think globally about today’s world issues whilst tailoring your degree to suit your unique interests or goals

POPULAR MODULES

- The Making of the Modern World
- The World Economy
- Co-operation and Conflict
- International Organisations
- Globalisation and Crime

COURSE	UCAS CODES		ENTRY REQUIREMENTS
	3 years	+ year abroad	
BA Global Studies	L903	L904	A-levels: BBB, including one essay-based subject IB: 30 points, including a Higher Level essay-based subject grade 5 BTEC: DDM, depending on subject studied – advice on acceptability can be provided
BA Global Studies and Modern Languages		LR04	

Some courses are available with a foundation year. See page 172 on Essex Pathways for details.

For all the information you need on courses, modules and graduate destinations, go to

essex.ac.uk/ug/global

HISTORY



WHY ESSEX?

- 1** We achieved 97% for student satisfaction (NSS 2018)
- 2** Our courses, led by active researchers in the field, involve the study of a wide-range of archival materials to encourage informed and lively debate
- 3** Direct your own studies with modules that offer a perspective on global cultures, while equipping you with vital research and career skills

POPULAR MODULES

- Becoming a historian
- The Great American Experiment
- Gender in Early Modern England
- Witch trials in Early Modern Europe and New England
- From Stalin to the Collapse of the USSR

Reveal untold and unexpected stories when you study history with us. At Essex we don't agree that "history is written by the victors"; we dig deeper, give voice to the powerless and work to uncover a true understanding of the past. We ask what makes history, what gets left behind – and why. Through research, analysis and interpretation, the study of history offers a way into numerous careers, as well as a deep insight into the world we live in today.



"Although investment banking may seem a world away from history, the skills and methods of working are the same! Essex helped me discover careers and employers that I'd never considered before."

Amy Foster, BA History
Now a Compliance Manager at the Royal Bank of Canada

COURSE	UCAS CODES			ENTRY REQUIREMENTS
	3 years	+ year abroad	+ placement year	
BA History	V100	V101	V103	A-levels: BBB IB: 30 points BTEC: DDM, depending on subject studied – advice on acceptability can be provided
BA Modern History	V140	V149	V148	
BA History with Film Studies	V1W6	V1WP	V1W7	
BA History with Human Rights	V1L2	V1LF	V1LG	
BA History and Criminology	MV91	MV9C	MV92	
BA History and Literature	QV21	VQ12	QV22	
BA History and Sociology	LV31	LV3C	LV32	
BA Modern History and International Relations	VL12	VL1F	VL14	
BA Modern History and Politics	LV21	LV2C	LV22	
BA Philosophy and History	VV15	VV5C		
BA History and Economics	LV11	VL11	V1L1	See economics page 108

Some courses are available with a foundation year. See page 172 on Essex Pathways for details.

For all the information you need on courses, modules and graduate destinations, go to

essex.ac.uk/ug/history

HOSPITALITY AND EVENTS MANAGEMENT

Build a network of industry links, train in business management and develop leadership skills for the hospitality and events industry. You will also gain experience throughout your course in our 4* hotel, to enhance your employability and further your career.



“We’re far more hands-on and able to get stuck in to the operational side. I really valued the experience of studying, living and working with the same group of people!”

Toby Bonnett, BA Hotel Management

WHY ESSEX?

- 1 Gain experience alongside your studies in a real 4* hotel at our Colchester Campus
- 2 Use our industry connections to further your career
- 3 Learn from lecturers with international hospitality and events experience

POPULAR MODULES

- Marketing and Customer Behaviour
- Food and Beverage Management
- Hotel Operations
- Human Resources
- Events Operations

COURSE	UCAS CODES			ENTRY REQUIREMENTS
	2 years accelerated	3 years	+year abroad	
BA Hotel Management	N863			96 UCAS tariff points including two full A-levels or the equivalent
BA Events Management with Hospitality	N8N6			A-levels: CCC BTEC: MMM
BA Hospitality Management		N886	NA86	GCSE: Five GCSEs at grade C/4 or above, including Mathematics and English, or equivalent
BA Events Management		N888	NA88	
BA Hotel Management (Top Up)		NV62 (8 months only)		Level 5 qualification, such as FdA or HND, Advanced Diploma in a relevant field. Your eligibility will be determined during the admissions process.

FdA entry routes are available for each of our BA courses for applicants with either: a minimum of 64 UCAS tariff points, including one full A-level or equivalent, or a vocationally relevant level 3 qualification. Subject to performance on the FdA you would have the opportunity to complete the relevant full BA degree. Please contact Undergraduate Admissions or visit our course pages for further information.

Three-year courses are subject to validation for October 2019 and have Study Abroad options. Please also note the two-year courses are not open to international applicants.

For all the information you need on courses, modules and graduate destinations, go to

essex.ac.uk/ug/hotel

HUMAN RIGHTS



WHY ESSEX?

- 1** Our lecturers are renowned experts in human rights and hold prestigious UN appointments
- 2** Gain experience in the field through opportunities such as our Human Rights Clinic
- 3** We have an active Human Rights Society which hosts a comprehensive programme of events

POPULAR MODULES

- Foundations of Human Rights
- Social Dimensions of Human Rights
- Human Rights Organisations
- Selected Issues in Human Rights

Human rights have no borders or boundaries. They are the global language of the world. Studying human rights gives you the confidence to advocate for individual and community rights, social justice and social change. Our approach is interdisciplinary, with the theory and practice of human rights embedded in our work.



“I chose to study at Essex because of its international outlook. I received many opportunities to meet people from the industry and my time management, analytical, and critical thinking skills improved.”

Nia Mincheva, LLB Law with Human Rights

COURSE	UCAS CODES			ENTRY REQUIREMENTS
	3 years	+ year abroad	+ placement year	
LLB Law with Human Rights*	MM20	MM21		A-level: BBB, including one essay-based subject IB: 30 points, including a higher-level essay-based subject
BA Journalism with Human Rights	P570	P572	P571	BTEC: DDD, depending on subject studied. Advice on acceptability can be provided.
BA History with Human Rights	V1L2	V1LF	V1LG	
BA Latin American Studies with Human Rights		T7M9		
BA Social Anthropology with Human Rights	LL37	LL38	LL39	A-levels: BBB IB: 30 points
BA Philosophy with Human Rights	V5M9	V5MX		BTEC: DDD, depending on subject studied. Advice on acceptability can be provided.
BA Sociology with Human Rights	L3M9	LMJ9	L3J9	
BA Politics with Human Rights	L2M9	LFM9	L219	

*LLB Law with Human Rights can be combined with a placement year. You would be responsible for finding your placement, with the support and guidance of the Employability and Careers Centre, in consultation with the School of Law. Some courses are available with a foundation year. See page 172 on Essex Pathways for details.

For all the information you need on courses, modules and graduate destinations, go to

essex.ac.uk/ug/human

JOURNALISM



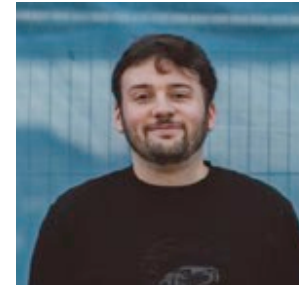
WHY ESSEX?

- 1** Learn from journalists working in today's news industry
- 2** Create your own print, online, radio and video content to build a portfolio showcasing your talent and versatility
- 3** BA Multimedia Journalism offers the opportunity to gain the National Council for the Training of Journalists (NCTJ) Diploma in Journalism, essential for your future career

POPULAR MODULES

- Media Law
- Radio and Television Journalism
- Creative Media
- Documentary Filmmaking
- Public Affairs

Our ground-breaking flagship course reflects how journalism has changed and prepares graduates for the challenges ahead. Explore what it means to work with new technologies in today's multimedia newsrooms. If you're curious and committed to keeping yourself and others informed about the world we live in, this is the course for you.



"I really appreciated the opportunities to do actual journalism. The newscasts and election all-nighters we worked on were exciting and built up great experience that transfers directly into the world of real work."

Alex Maxam, BA Multimedia Journalism
Now Social Editor at LADBible.com

COURSE	UCAS CODES			ENTRY REQUIREMENTS
	3 years	+ year abroad	+ placement year	
BA Multimedia Journalism	P500	P501	P503	A-levels: BBB, including one essay-based subject GCSE: Mathematics C/4
BA Journalism with Business Management	P520	P522	P521	IB: 30 points, including a Higher Level essay-based subject grade 5 BTEC: DDD, depending on subject studied – advice on acceptability can be provided
BA Journalism and Economics	P560	P562	P561	
BA Journalism and Literature	P530	P532	P531	
BA Journalism and English Language	P510	P512	P511	
BA Journalism and Modern Languages		P590		A-levels: BBB, including one essay-based subject
BA Journalism and Politics	P580	P582	P581	IB: 30 points, including a Higher Level essay-based subject grade 5
BA Journalism and Liberal Arts	P525	P527	P526	BTEC: DDM, depending on subject studied – advice on acceptability can be provided
BA Journalism and Philosophy	P515	P517	P516	
BA Journalism with Human Rights	P570	P572	P571	
BA Journalism and Criminology	P550	P552	P551	
BA Journalism and Sociology	P540	P542	P541	

For all the information you need on courses, modules and graduate destinations, go to

essex.ac.uk/ug/journalism

LATIN AMERICAN STUDIES

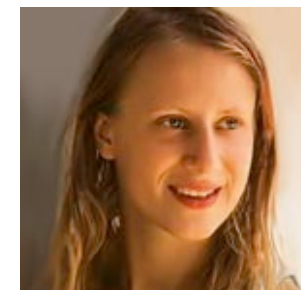
Latin America has seen huge political upheaval over the last decade, yet it remains a region with immense global significance. The region – which comprises South and Central America, Mexico, and the Caribbean – has inspired some of the world’s most celebrated art and music and represents an area of significant environmental and economic impact. Expertise in the region and its diverse peoples is now much in demand, especially as more people now speak Spanish than English. Learn Spanish or Portuguese as part of your degree and deepen your knowledge of one of the most complex parts of the world.

WHY ESSEX?

- 1** We house the internationally important collection of art from Latin America ESCALA
- 2** Spend a year studying in Latin America, developing your Spanish or Portuguese
- 3** You can build a course to suit your interests in Latin America by choosing from a range of modules

POPULAR MODULES

- Contemporary Latin America
- Crisis of the American Idea
- Art in Latin America
- Slavery and Plantation Societies in Latin America
- Alternative Americas: Independent Film



“When I saw that Essex offered a course with an obligatory year abroad, it seemed like a perfect way of satisfying my curiosity about Latin America and learn Spanish and Portuguese.”

Gedmina Sumakaryte, BA Latin American Studies with Business Management

COURSE	UCAS CODES	ENTRY REQUIREMENTS
	4 years including year abroad	
BA Latin American Studies	T711	A-levels: BBB IB: 30 points
BA Latin American Studies with Business Management	T7N2	BTEC: DDM, depending on subject studied – advice on acceptability can be provided
BA Latin American Studies with Human Rights	T7M9	

Some courses are available with a foundation year. See page 172 on Essex Pathways for details.

For all the information you need on courses, modules and graduate destinations, go to

essex.ac.uk/ug/latin-am

LAW



WHY ESSEX?

- 1** Our lecturers work with the UN, the UK government and with EU and foreign governments
- 2** You gain work experience advising real clients through opportunities such as the Essex Law Clinic
- 3** We are ranked among the top 200 departments in the QS World University Rankings (2018)

POPULAR MODULES

- Criminal Law
- Animal Protection and Wildlife Law
- Cybercrime
- Family Law
- International Trade Law

Law affects all of our relationships: with other people, with shops, banks and companies, and with governments. From company law and cybercrime, to music and medicine, our law degrees prepare you to put theoretical knowledge into practice across a range of industries.



“Essex offers a great careers service and many volunteering and internship opportunities. I secured a volunteering position during my final year and then completed a Masters in International Human Rights Law.”

Machela Ama Boampong, LLB Law
Now a paralegal for Coram Children's Legal Centre

COURSE	UCAS CODES		ENTRY REQUIREMENTS
	2 years	+ year abroad	
LLB Law (Senior Status)	M103		A lower second class undergraduate degree (this is a conversion course for graduates of other disciplines)
	3 years		
LLB Law	M100	M120	A-levels: BBB, including one essay-based subject
LLB Law with Business	MN00	MN01	IB: 30 points, including a Higher Level essay-based subject grade 5
LLB Law with Criminology	MM00		BTEC: DDD, depending on subject studied – advice on acceptability can be provided
LLB Law with Human Rights	MM20	MM21	
LLB Law with Philosophy	MV16	MV18	
LLB Law with Politics	ML16	ML14	
LLB Law with Finance	MN10		See M100 above, but also GCSE Maths Grade C/4
	4 years		
LLB English and French Law (Licence)*	M122		A-levels: ABB including A in A-level French IB: 32 points, including Higher Level French Grade 6 French Baccalaureat with 14 overall including 12 in English and 12 in French

*Please be aware the organisation of the fourth year in France might be subject to change due to ongoing reform of the French education system. All Law courses, except for LLB Law (Senior Status) and LLB English and French Laws (Maîtrise), can be combined with a placement year. You would be responsible for finding your placement, with the support and guidance of the Employability and Careers Centre, in consultation with the School of Law.

Some courses are available with a foundation year. See page 172 on Essex Pathways for details.

For all the information you need on courses, modules and graduate destinations, go to

essex.ac.uk/ug/law



LIBERAL ARTS



WHY ESSEX?

- 1** Create a course that has real academic breadth, tailored to your passions – from politics, to science, to art
- 2** We have always been the highest-rated politics department in the UK (REF 2014, mainstream universities, THE 2014)
- 3** Our students are among the most versatile, highly-sought and intellectually imaginative graduates

POPULAR MODULES

- Modern Revolutions in Science, Politics and Culture
- Navigating the Digital World
- Philosophy and Religion
- The World in Question
- Human Rights and Global Justice



Liberal Arts gives you the freedom to stay curious, enabling you to study a range of interests, including politics, art, philosophy, literature, human rights, film, languages and sociology. You'll be uniquely equipped to find connections between subjects that might seem unrelated to the untrained eye. Shaped by an interdisciplinary approach, your informed perspective and powers of reasoning will support your journey to the top of all kinds of careers.



“Liberal Arts expands your horizons and helped me discover what I really love doing – writing.”

Rachel Simson, BA Liberal Arts and MA Creative Writing
Now writing a young adult science fiction novel

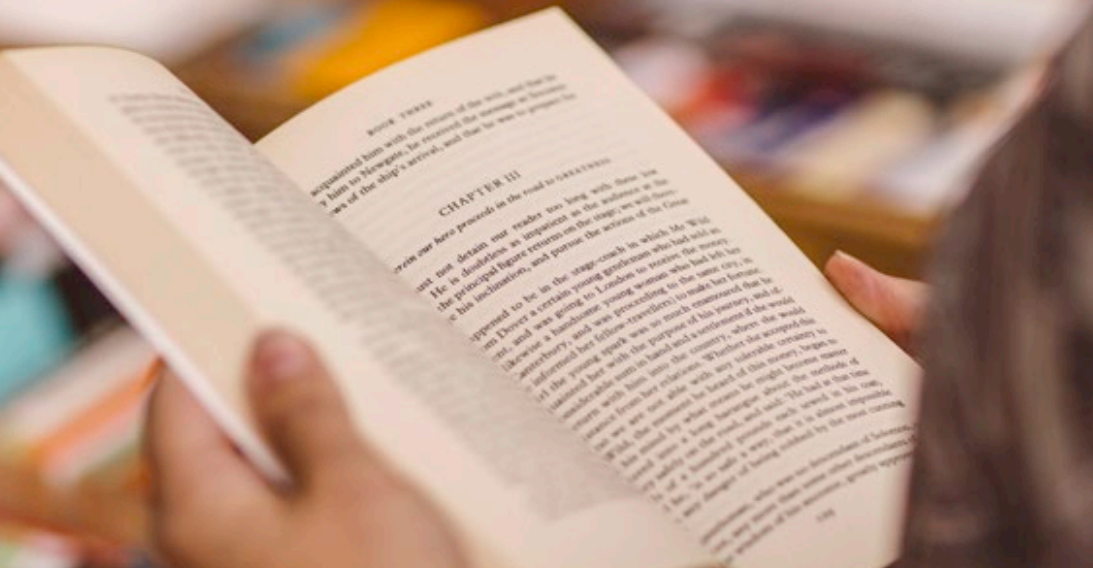
COURSE	UCAS CODES			ENTRY REQUIREMENTS
	3 years	+ year abroad	+ placement year	
BA Liberal Arts	V900	QV00		A-levels: BBB, including one essay-based subject IB: 30 points, including a Higher Level essay-based subject grade 5
BA Journalism and Liberal Arts	P525	P527	P526	BTEC: DDM, depending on subject studied – advice on acceptability can be provided

Some courses are available with a foundation year. See page 172 on Essex Pathways for details.

For all the information you need on courses, modules and graduate destinations, go to

essex.ac.uk/ug/lib-arts

LITERATURE



WHY ESSEX?

- 1** You can study a diverse range of literature including: First World War Writing, Romance poetry, Gothic fiction, US and Caribbean literature, children's literature, Shakespeare's plays and science fiction
- 2** We encourage interdisciplinary and research-based approaches. Apply everything from Freudian analysis to theories of the post-human to your choice of literature, film, drama, journalism or creative writing modules
- 3** Our academics are leaders in the field and encourage experimentation and originality in writing and thinking

POPULAR MODULES

- The Writers' Toolkit
- Black Lives Represented: Writing, Art, Politics and Society
- Children's Fiction and the Turn to Young Adult Adventure
- Dreaming and Writing
- Shakespeare: The Tragedies

Turn your love of reading into something more. The study of literature is a way to explore the world and different cultures, to visit the past and look anew at the present. Study literature at Essex and you may discover your new favourite author is someone you've never heard of before. At the same time gain fresh insights into the classics you thought you knew well. Study your passion, improve your writing and research skills and develop the kind of intelligence employers always value.



“I enjoyed the variety of literature and the lecturers’ passion for what they teach. Thanks to all the chances I had to develop my skills, I found a career I really love.”

Siril Grini, BA English Literature

COURSE	UCAS CODES			ENTRY REQUIREMENTS
	3 years	+ year abroad	+ placement year	
BA Drama and Literature	QW24	WQ24	QW25	A-levels: BBB, including one essay-based subject IB: 30 points, including a Higher Level essay-based subject grade 5 BTEC: DDM, depending on subject studied – advice on acceptability can be provided
BA English Literature	Q300	Q321	Q303	
BA English and Comparative Literature	Q210	Q211	Q212	
BA English and United States Literature	T720	QT37	T723	
BA Film Studies and Literature	QW26	PQ32	QW27	
BA Literature and Sociology	LQ32	QL23	LQ33	
BA Literature and Creative Writing	QW30	QW31	QW33	
BA History and Literature	QV21	VQ12	QV22	See QW24 above, but note that this course does not require an essay-based subject

Some courses are available with a foundation year. See page 172 on Essex Pathways for details.

For all the information you need on courses, modules and graduate destinations, go to

essex.ac.uk/ug/literature

MARINE BIOLOGY



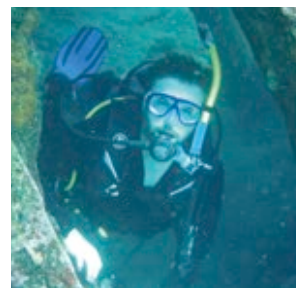
WHY ESSEX?

- 1** Learn with internationally recognised scientists and explore rocky shore, estuarine, Mediterranean and coral reef environments
- 2** Develop your practical skills with subsidised UK and optional overseas field trips
- 3** Receive SCUBA training, be part of our unique underwater lectures and conduct research on our coral reef expedition

POPULAR MODULES

- Plant Biology and Ecosystems
- Marine Ecology
- Coral Reef Biology
- Estuarine and Coastal Ecology
- Oceanography and Marine Conservation

Dive into the complex world of coral reefs, deep-sea trenches, coastal lagoons, sea ice and tropical seagrass beds. Investigate the effects of environmental change on coral reef biodiversity with a field trip to the Coral Triangle, develop your skills in the latest ocean sampling techniques in Greece, and explore the Essex coastline. You can also volunteer with our Coral Reef Research Unit and join our Marine Conservation Society.



“I have been interested in the environment and how mankind can correct the wrongs we have done to our home for a long time. I loved the autonomy, creativity and challenge of undertaking my own project in my final year. It cemented my desire to pursue research.”

Gareth Thomas, BSc Marine Biology
Now studying our PhD Environmental Biology

COURSE	UCAS CODES			ENTRY REQUIREMENTS
	3 years	+ year abroad	+ placement year	
BSc Marine Biology	C164	CC60	CC64	A-levels: BCC, including Biology at grade B GCSE: Mathematics C/4 IB: 28 points, including Higher Level Biology grade 5 and Standard Level Mathematics or Maths Studies grade 4, if not taken at Higher Level BTEC: DDD, depending on subject and units studied – advice on acceptability can be provided

This course is available with a foundation year. See page 172 on Essex Pathways for details.

For all the information you need on courses, modules and graduate destinations, go to

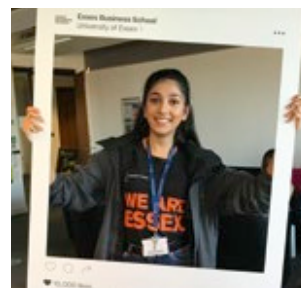
essex.ac.uk/ug/marine-bio



MARKETING



Begin your journey into the rapidly-changing marketing industry. Marketing is the shop-front of any business – it dazzles the consumer and creates the pathway from interest to consumption. Be creative, be strategic, analyse trends and consumer behaviour to ignite a spark and capture a wider audience through ever emerging channels. Welcome to marketing at Essex Business School, where you will combine imagination, innovation and initiative.



“I realised that Essex is where I’m supposed to be. I want to work in marketing in an area where I can be a voice for people and I think that my course will help me get there.”

Ifra Qureshi, BSc Marketing

WHY ESSEX?

- 1** BSc Marketing has been awarded Q-Step Affiliate status which gives you the chance to show your numerical and creative skills on your degree transcript
- 2** Our state-of-the-art creative hub with bookable TV and radio studios mimics the environment found in top marketing and design agencies
- 3** Take advantage of a work placement or study abroad year to learn about the global impact of marketing

POPULAR MODULES

- Business Creation and Growth
- Consumer Behaviour
- Business-to-Business Marketing
- Marketing Communications
- Business Ethics

COURSE	UCAS CODES			ENTRY REQUIREMENTS
	3 years	+ year abroad	+ placement year	
COLCHESTER CAMPUS				
BSc Management and Marketing	NN25	NNF5	NN2M	A-levels: BBB GCSE: Mathematics C/4 IB: 30 points, including Standard Level Mathematics or Maths Studies grade 4, if not taken at Higher Level
SOUTHEND CAMPUS				
BSc Marketing*	N501	N502	N504	BTEC: DDD, depending on subject studied – advice on acceptability can be provided

*Awarded with Applied Quantitative Methods qualifier which means you can take a specific degree path to graduate with enhanced quantitative skills.

Some courses are available with a foundation year. See page 172 on Essex Pathways for details.

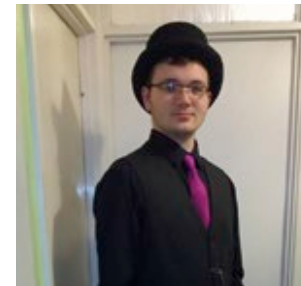
For all the information you need on courses, modules and graduate destinations, go to

essex.ac.uk/ug/marketing



MATHEMATICS

Mathematics is the language that underpins the rest of science. Maths at Essex is not what you would expect and has a genuinely broad reach; from exploring the economic impact of the social networks of cows, to the mathematical modelling of brain evolution to improve patient care – our research explores issues of global importance. This is your chance to explore issues that have a real impact on people’s everyday lives and the world around us.



“I really enjoyed the coding side of maths, something I had never done before. Don’t be afraid to ask for help, you’re not in this alone!”

Alex Woor, BSc Mathematics

WHY ESSEX?

- 1 Study in our brand new STEM Centre and learn from world-class academics
- 2 We are ranked top 15 in the UK for mathematics (Guardian University Guide 2019)
- 3 We have placement opportunities and industry links with top firms such as Aviva, Profusion, Mondaq, MSX International, AXA and Buck Consultants

POPULAR MODULES

- Applied Mathematics
- Statistics
- Survival Analysis
- Cryptography and Codes
- Abstract Algebra

COURSE	UCAS CODES			ENTRY REQUIREMENTS
	3 years	+ year abroad	+ placement year	
BSc Mathematics	G100	G102	G103	A-levels: BBB, including Mathematics
BSc Mathematics with Physics [†]	G1F3	GCF3	G1F4	Please note that we are unable to accept A-level Use of Mathematics in place of A-level Mathematics
BSc Economics and Mathematics	LG11	LG1C	L1G2	IB: 30 points, including Higher Level Mathematics

[†] also requires A-level Physics grade B or IB Higher Level Physics grade 5 (or equivalent). Some courses are available with a foundation year. See page 172 on Essex Pathways for details.

For all the information you need on courses, modules and graduate destinations, go to

essex.ac.uk/ug/maths

MODERN LANGUAGES

For English Language and Linguistics, see page 112.

WHY ESSEX?

- 1** We offer French, German, Italian and Spanish from beginner to mastery level
- 2** If you study a language from scratch via our intensive route, we pay your tuition fees to attend a four-week summer school in the country where that language is spoken
- 3** Gain skills in translation, interpreting and subtitling, using the latest technology in our multimedia labs

POPULAR MODULES

- Translation
- Interpreting
- Subtitling
- A Visual History of the Spanish Language
- La Dolce Italia



Develop your translation skills in our EU and UN-standard interpreting booths.

Studying languages at Essex opens the door to a whole new world: different countries, people and cultures as well as excellent employment prospects.



photo credit: Tille Thompson

“Students will never run out of opportunities to practise their newly acquired language skills! Since graduating I’ve been pursuing my dream to gain mastery over several languages by starting off my career as a technical and legal translator.”

Ana Joldes, BA Modern Languages

COURSE	UCAS CODES	ENTRY REQUIREMENTS
	4 years 3 years including year abroad	
BA Modern Languages	R900	
BA Language Studies	Q140	
BA French Studies and Modern Languages	RR19	A-levels: BBB
BA German Studies and Modern Languages	RR9F	IB: 30 points
BA Italian Studies and Modern Languages	RR38	BTEC: DDD, depending on subject studied – advice on acceptability can be provided
BA Spanish Studies and Modern Languages	RR49	
BA Modern Languages and English Language	RQ93	If Portuguese is taken as the major language, A level pass (or equivalent) in Italian, Spanish or Portuguese or first language level fluency in Italian, Romanian or Spanish is required
BA Modern Languages and Linguistics	RQ91	
BA Modern Languages and Teaching English as a Foreign Language	RX91	
BA Spanish, Portuguese and Brazilian Studies	RT97	
BA Modern Languages with Latin American Studies	R8T7	
BA International Relations and Modern Languages	LRF9	
MLang Modern Languages (Translation) (Integrated Masters)	R990	A-levels: ABB including language you wish to major in IB: 32 points including Higher Level grade 5 in the language you wish to major in

Some courses are available with a foundation year. See page 172 on Essex Pathways for details.

For all the information you need on courses, modules and graduate destinations, go to

essex.ac.uk/ug/modern-lang

NURSING: ADULT OR MENTAL HEALTH



WHY ESSEX?

- 1** We're ranked 6th in the UK for nursing (Guardian University Guide 2019)
- 2** You can spend a year abroad widening your nursing knowledge and skills
- 3** Our focus is on producing nurses with empathy as well as technical ability

POPULAR MODULES

- How People Function
- Delivering Compassionate Care
- Community Engagement
- Critical Patient Pathways
- Nursing Practice

Choosing nursing with us is about far more than just gaining a degree. You'll join a learning community where you're treated as a professional from day one, and where dignity, respect and consideration for people are at the heart of all we do. Input from current clinicians and our Service User Groups means that our courses continually evolve to meet the needs of society, and you'll get real insight into healthcare delivery today.



"All the staff in the School of Health and Social Care were unwavering in their encouragement and support, making a tough academic challenge an enjoyable experience."

Terence Edward Gammell, BSc Nursing (Mental Health)

COURSE	UCAS CODES		ENTRY REQUIREMENTS
SOUTHEND OR COLCHESTER CAMPUS	3 years	+ year abroad	
BSc Nursing (Adult)	B740	B742	BTEC: DDD, depending on subject studied – advice on acceptability can be provided Access to HE Diploma: 45 level 3 credits at merit or above (in a relevant pathway)
BSc Nursing (Mental Health)	B760	B762	A-levels: BBC GCSE: Mathematics and English Language C/4

You must also have a satisfactory Occupational Health Check and enhanced Disclosure and Barring Service Check (DBS) – both of these are organised by the University.
If English is not your first language you will require IELTS 7.0 overall with 6.5 in writing and 7.0 in all other components.
As part of the selection process, you will be required to demonstrate a good knowledge and clear understanding of the NHS Constitution and its core values.
Successful completion of our BSc Nursing (Adult) or BSc Nursing (Mental Health) leads to eligibility to apply for registration with the Nursing and Midwifery Council (NMC).

Degree apprenticeships are available in this subject area.
For more information visit www1.essex.ac.uk/apprenticeships/apprentices

For all the information you need on courses, modules and graduate destinations, go to

essex.ac.uk/ug/nursing



OCCUPATIONAL THERAPY



WHY ESSEX?

- 1** Gain hands-on experience in our campus Community Living Space and in a range of professional settings through practice placements
- 2** 100% of our undergraduate School of Health and Social Care students are in professional employment or postgraduate study within six months of graduating from Essex (DLHE 2017)
- 3** Small class sizes enable strong working relationships between students and experienced staff

POPULAR MODULES

- Interprofessional Working and Development
- Occupational Being
- Professional Reasoning
- Therapy and Occupation
- Professional Enquiry

Occupational therapy can be used to enable people with physical, mental, social and occupational challenges to live full and satisfying lives. You'll learn through a blend of theory and practice, including placements in a variety of settings.



Julia Finbow, BSc Occupational Therapy

“I enjoyed the mix of practical and theoretical work. Occupational Therapy can provide a broad range of employment opportunities, use your placements to inform you of your preferred area of practice.”

COURSE	UCAS CODES	ENTRY REQUIREMENTS
	3 years	
BSc Occupational Therapy	B939	A-levels: BBC, supported by 5 GCSEs at C/4 or above (including Mathematics, English and Science) BTEC: DMM, depending on subject - advice on acceptability can be provided Access to HE Diploma: 45 level 3 credits at merit or above (in a relevant pathway)

You must also have a satisfactory Occupational Health Check and enhanced Disclosure and Barring Service Check (DBS) – both of these are organised by the University.
If English is not your first language you will require IELTS 7.0, with a minimum of 6.5 in each element.

For all the information you need on courses, modules and graduate destinations, go to

essex.ac.uk/ug/occu-therapy

ORAL HEALTH SCIENCE

There is a growing need for skilled practitioners in oral health. Whether you are an aspiring dental hygienist or want to improve your existing qualifications to become a dental therapist, we can help. Clinicians with extensive experience in day-to-day dentistry are your instructors, as you gain a holistic approach to patient care.



“The placement-based learning was much more suitable for me than constant lectures as I learn better with my hands. It enabled me to gain the people skills to go out on my own once I’d qualified!”

**Samantha Henly, FdSc Oral Health Science
Now a qualified Dental Hygienist**

WHY ESSEX?

- 1** Learn clinical skills in our dedicated, state-of-the-art dental skills lab
- 2** You'll be eligible to register with the General Dental Council (GDC) as a dental hygienist on successful completion of our FdSc, and as a dental therapist following the successful completion of our BSc
- 3** You are involved in the treatment of patients – right from the beginning of your course

POPULAR MODULES

- Clinical Governance and Patient Safety
- Management of Oral Diseases
- Developing Professional Practice
- Managing the Oral Care of Children and Adolescents

COURSE

UCAS CODES ENTRY REQUIREMENTS

SOUTHEND CAMPUS

COURSE	UCAS CODES	ENTRY REQUIREMENTS
FdSc Oral Health Science	B750 2 years	A-levels: CC, including one core science subject (Biology, Chemistry, Applied Science or Physics) GCSE: Mathematics, English and Science at C/4 (GCSE Science can be single Science or one of the following: Biology, Chemistry or Physics) BTEC: MPP in a science related subject Access to HE Diploma: 45 level 3 credits at pass or above (in a relevant pathway) National Dental Nurse Certificate or Diploma in Dental Nursing (with minimum of two years experience taken for pre and post qualification employment)
BSc Oral Health Science	B751 1 year (top-up)	Please note this course is only open to existing registered dental hygienists. Visit our website for more information

You must also have a satisfactory Occupational Health Check and enhanced Disclosure and Barring Service Check (DBS) – both of these are organised by the University.
As part of the selection process, you will be required to demonstrate a good knowledge and clear understanding of the NHS Constitution and its core values.

For all the information you need on courses, modules and graduate destinations, go to

essex.ac.uk/ug/oral-health-sci

PHILOSOPHY



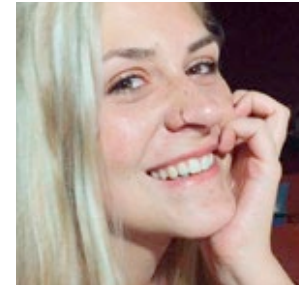
WHY ESSEX?

- 1** We're top 20 for philosophy in the UK (Guardian University Guide 2019)
- 2** We specialise in real-world problems and focus on transferable skills
- 3** We have added more contact hours and abolished exams in the second and final year

POPULAR MODULES

- Death, God and the Meaning of Life
- Ethics
- Freud and the Philosophy of the Unconscious
- Feminism
- Ancient Philosophy

We expand the realm of the possible. Philosophy is the rigorous study of ideas and arguments and we embrace this philosophical rigour to address the existential questions of human life. Gain a critical perspective on the social, political and economic challenges we face today.



“My time at Essex gave me confidence and courage in my own opinions. I enjoyed the modules on philosophy and religion, they made me have a new outlook on something I used to find so controversial.”

Danielle Brockett, BA Philosophy

COURSE	UCAS CODES			ENTRY REQUIREMENTS
	3 years	+ year abroad	+ placement year	
BA Philosophy	V500	V501		A-levels: BBB IB: 30 points BTEC: DDM, depending on subject studied – advice on acceptability can be provided
BA Philosophy, Religion and Ethics	VV56	VV5P		
BA Philosophy and Art History	VV53	VV5H		
BA Philosophy and History	VV15	VV5C		
BA Philosophy with Human Rights	V5M9	V5MX		
BA Philosophy and Law	MVC5	VM51		
BA Philosophy and Literature	QV25	VQ5F		
BA Philosophy and Politics	LV25	LV2M		
BA Philosophy and Sociology	LV35	VL53		
BA Journalism and Philosophy	P515	P517	P516	A-levels: BBB, including one essay-based subject IB: 30 points, including a Higher Level essay-based subject grade 5

Some courses are available with a foundation year. See page 172 on Essex Pathways for details.

For all the information you need on courses, modules and graduate destinations, go to

essex.ac.uk/ug/philosophy

PHYSIOTHERAPY



WHY ESSEX?

- 1** Upon graduation you will be eligible to apply for professional registration with the Health and Care Professions Council, as well as the Chartered Society of Physiotherapy
- 2** Our close links with clinicians in practice will strengthen your career prospects
- 3** Small cohort sizes enable strong working relationships between students and experienced staff

POPULAR MODULES

- Anatomy for Physiotherapy
- Neuromusculoskeletal Physiotherapy
- Cardiovascular Physiotherapy
- Neurological Physiotherapy
- Complexities in Rehabilitation

Physiotherapy is a pioneering profession which helps to improve people's quality of life. Learn to use physical approaches to promote, maintain and restore physical, psychological and social wellbeing. Through partnership and negotiation, physiotherapists work with patients and fellow health professionals to maximise the potential of human function and movement.

“Essex has provided me with a great foundation which I have built on. It was a place where I learned what it means to be a physiotherapist. The knowledge I developed continues to have a positive impact in my practical experiences to date.”



Anthony Johnstone, BSc Physiotherapy
Now the Lead U18 Academy Physiotherapist at West Ham United

COURSE	UCAS CODES	ENTRY REQUIREMENTS
	3 years	
BSc Physiotherapy	B169	<p>A-levels: BBB (to include a life science) supported by 6 GCSEs at C/4 (to include Mathematics, English and Science)</p> <p>Access to HE diploma: 24 distinctions and 21 merits with at least 12 Distinction credits in relevant Biological Science units. This must be supported by Level 2 Maths and English Language qualifications.</p> <p>Entry requirements for students studying BTEC qualifications are dependent on subjects studied. Advice can be provided on an individual basis, as additional Anatomy and Physiology study may be required. The standard required is at Distinction level.</p>

You must also have a satisfactory Occupational Health Check and enhanced Disclosure and Barring Service Check (DBS) – both of these are organised by the University. As part of the selection process, you will be required to demonstrate a good knowledge and clear understanding of the NHS Constitution and its core values.

For all the information you need on courses, modules and graduate destinations, go to

essex.ac.uk/ug/physio

POLITICS AND INTERNATIONAL RELATIONS



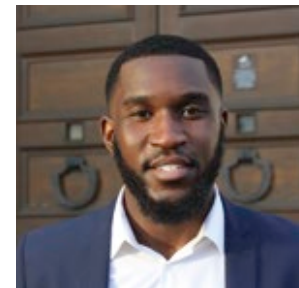
WHY ESSEX?

- 1** We have always been the highest-rated politics department in the UK (REF 2014, mainstream universities, THE 2014)
- 2** Ranked among the top 40 departments in the QS World University Rankings (2018)
- 3** A number of our degrees are awarded with Applied Quantitative Methods, meaning our graduates have the enhanced quantitative skills wanted by employers

POPULAR MODULES

- Politics and Power
- Politics of the Middle East
- Conflict Analysis
- Electoral Behaviour
- The European Union

Want to know why earthquakes are deadlier where the Mafia is stronger? How cellphone activity predicts riots? Or why people who are scared of spiders are more conservative? Ask an Essex political scientist. Our research casts light on aspects of life you might never ordinarily connect to politics and government. Students travel from all over the world to enjoy the excellent education and career prospects we provide.



“Essex is one of the best political science institutions in the country. I enjoyed the variety of learning, from political economics and human rights, to a simulation of a peacekeeping conference!”

Christian Ngombo, BA Politics
Now completing MSc International Public Policy

COURSE	UCAS CODES			ENTRY REQUIREMENTS
	3 years	+ year abroad	+ placement year	
BA Politics	L200	L201	L203	A-levels: BBB IB: 30 points BTEC: DDD, depending on subject studied – advice on acceptability can be provided
BA International Development	L900	L901	L902	
BA International Relations	L258	L259	L260	
BA Political Theory and Public Policy	7L29	0A56	7L30	
BA Politics with Human Rights	L2M9	LFM9	L219	
BA Politics and International Relations	L225	L226	L227	
BSc Politics and International Relations	L222	L223	L224	
BA Political Economics	L150	L151	L152	As L200 above, plus C/4 in GCSE Mathematics (or equivalent)
BA Philosophy, Politics and Economics	L0V0	L0VA	L0V1	
BSc Economics and Politics	LL2F	LL3F	LL4F	

Some courses are available with a foundation year. See page 172 on Essex Pathways for details.

For all the information you need on courses, modules and graduate destinations, go to

essex.ac.uk/ug/politics

PSYCHOANALYTIC STUDIES / THERAPEUTIC CARE

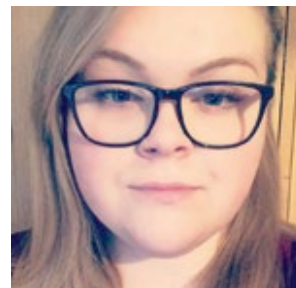
WHY ESSEX?

- 1 Learn in small groups from expert practitioners and academics
- 2 Our approachable staff have clinical as well as academic expertise and experience
- 3 Participative teaching – we want to hear your stories and look at how you see the world

POPULAR MODULES

- Sex, Politics and Religion
- Child, Adolescent and Adult Development
- Freud: Mind, Culture and Society
- The Unconscious: Analytical Psychology, Culture and Society - Jung
- Trauma and Recovery

Do you want to know what's hidden in the mind? Are you fascinated by human behaviour? Or what underpins cultural and political activities? Our courses scrutinise all of these questions. Looking beneath the surface, at levels untouched by other disciplines, we explore the role of the unconscious mind in mental health, culture and society.



“Essex improved my confidence in myself and my abilities, to believe that I am capable of making a difference, even if it is small.”

Bekki Ager, BA Therapeutic Communications and Therapeutic Organisations
Now a Rehabilitation Assistant with the NHS

COURSE	UCAS CODES			ENTRY REQUIREMENTS
		+ year abroad	+ placement year	
COLCHESTER CAMPUS ONLY				
BA Psychosocial and Psychoanalytic Studies	C890 (3 years)	C89B	C89A	A-levels: BBB IB: 30 points BTEC: DDD, depending on subject studied - advice on acceptability can be provided
BA Therapeutic Communication and Therapeutic Organisations (Adult, Child and Adolescent)	1 year top up			You should have a Foundation Degree in Therapeutic Communication and Therapeutic Organisations at a merit level
BA Therapeutic Care	C847	C849		A-levels: BCC IB: 28 points BTEC: DDM, depending on subject studied - advice on acceptability can be provided
COLCHESTER OR SOUTHEND CAMPUSES				
FdA Therapeutic Communication and Therapeutic Organisations (Adult, Child and Adolescent)	2 years			You should demonstrate capacity to study a foundation degree, evidenced by A-level or equivalent qualifications

Please apply for BA/FdA Therapeutic Communication and Therapeutic Organisations directly via our website: essex.ac.uk/direct
Some courses are available with a foundation year. See page 172 on Essex Pathways for details.

For all the information you need on courses, modules and graduate destinations, go to

essex.ac.uk/ug/psychoanalytic

PSYCHOLOGY



WHY ESSEX?

- 1** Benefit from our unique mix of practical assessment and innovative teaching methods
- 2** We're in the top 25 nationally for overall student satisfaction in psychology (NSS 2018)
- 3** You have unparalleled access to cutting-edge facilities such as EEG, TMS and eye-tracking

POPULAR MODULES

- Brain and Behaviour
- Cognitive Neuropsychology
- Emotion
- Memory Attention and Language
- Judgement and Decision-making

As life around us changes, we try to make sense of what we perceive. How do our experiences inform the way we think and behave? Psychology offers a better understanding of our place in the world. Use cutting-edge technology to uncover how we interact with our environment and get involved in ground-breaking research.



“I’ve always been drawn to how our brains can affect our behaviour. Essex gave me a competitive edge internationally that I did not expect! When I came back to my country I landed three jobs very easily. I am still being sought after by many psychiatric facilities.”

Halima Jafiya, BSc Psychology

COURSE	UCAS CODES			ENTRY REQUIREMENTS
	3 years	+ year abroad	+ placement year	
BSc Psychology	C800	C803	C811	A-levels: BBB GCSE: Mathematics C/4
BA Psychology	C802	C801	C810	IB: 30 points, including Standard Level Mathematics or Maths Studies grade 4, if not taken at Higher Level
BSc Psychology with Cognitive Neuroscience	C808	C806	C809	BTEC: DDD, depending on subject studied – advice on acceptability can be provided
BSc Psychology with Economics	C814	C815	C816	
BSc Cognitive Science	C831	C832	C833	Same as above plus B in A-level Mathematics

Some courses are available with a foundation year. See page 172 on Essex Pathways for details. Some courses are accredited by the British Psychological Society.

For all the information you need on courses, modules and graduate destinations, go to

essex.ac.uk/ug/psychology

SOCIAL WORK



WHY ESSEX?

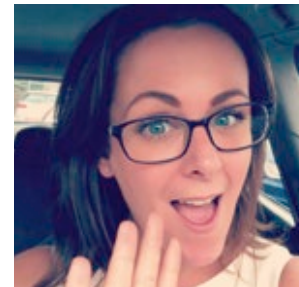
- 1** 100% of our undergraduate School of Health and Social Care students are in professional employment or postgraduate study within six months of graduating from Essex (DLHE 2017)
- 2** Successful completion of this course provides eligibility to apply for registration with the Health and Care Professions Council (HCPC)
- 3** Gain in-depth experience through working with children, young people, adults, families and communities

POPULAR MODULES

- Lifespan Development
- Sociological and Psychological Frameworks
- Emotional, Relational and Mental Health Issues
- Legislation, Regulation and Ethics for Practice
- Law and Social Policy

Social work is all about people. It's an extremely rewarding and challenging profession. You'll need to be hardworking, adaptable, honest and, above all, passionate about finding long-term solutions and supporting positive changes for children, adults and families. At the heart of our course is the development of the skills, knowledge and understanding of how to support people to improve the personal, psychological and social aspects of their lives.

“Social work opens doors to a variety of jobs and allows you to understand the positive impact you can have on others. Placements were my favourite part of the degree, as you meet a variety of people.”



Charlotte Bennion, BA Social Work
Now a Social Worker, supporting children with disabilities

COURSE	UCAS CODES	ENTRY REQUIREMENTS
SOUTHEND CAMPUS	3 years	
BA Social Work	L500	<p>A-levels: BBB</p> <p>GCSE: Mathematics and English C/4 or equivalent qualification</p> <p>IB: 30 points</p> <p>BTEC: DDM, depending on subject studied - advice on acceptability can be provided</p> <p>Access to HE Diploma: 45 level 3 credits at merit or above (in a relevant pathway)</p> <p>Some paid or voluntary experience in health or social care in a relevant social care or child care/education setting is also required</p>

You must also have a satisfactory Occupational Health Check and enhanced Disclosure and Barring Service Check (DBS) – both of these are organised by the University.
If English is not your first language, you will require IELTS 7.0, with a minimum of 6.5 in each element.

For all the information you need on courses, modules and graduate destinations, go to

essex.ac.uk/ug/social-work

SOCIOLOGY



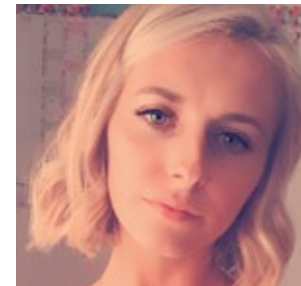
WHY ESSEX?

- 1** Ranked among the top 40 departments in the QS World University Rankings (2018)
- 2** Acquire a range of skills valued by employers, from data analysis to debating
- 3** Our teaching is underpinned by research – new ideas and theories are tested in the classroom

POPULAR MODULES

- Media, Culture and Society
- Race, Class and Gender
- Policing, Punishment and Society
- Globalisation and Crime
- War and Trauma in the Modern Age

What unites us? What divides us? How do we tackle inequalities and enhance social justice? How do you define yourself, your family and others? Study sociology as a broad discipline or choose to combine it with a particular specialism including social psychology, counselling or criminology.



“The course is challenging but really interesting and the professors in the department are well known for their research. Studying Sociology at Essex has really helped me in my current career.”

India Loveland, BA Sociology

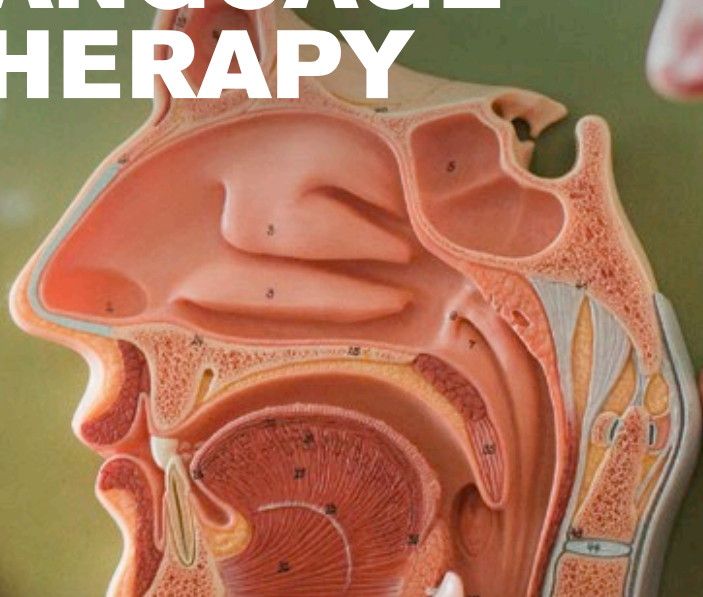
COURSE	UCAS CODES			ENTRY REQUIREMENTS
	3 years	+ year abroad	+ placement year	
BA Sociology	L300	L301	L306	A-levels: BBB IB: 30 points BTEC: DDD, depending on subject studied – advice on acceptability can be provided
BA Communications and Digital Culture	LP33	PL33	LP34	
BA Sociology and Criminology	LM39	LMH9	LM38	
BA Sociology with Psychosocial Studies	LJC8	LJ8C	LCJ8	
BA Social Anthropology	LL36	LL3P	LL6P	
BA Social Anthropology with Human Rights	LL37	LL38	LL39	
BA Sociology with Human Rights	L3M9	LMJ9	L3J9	
BA Sociology and Politics	LL32	LL23	LL24	
BA Sociology with Social Psychology	CL83	CLV3	CL93	
BSc Sociology with Applied Quantitative Research Methods	L315	L316	L317	
BA Sociology with Counselling Skills	L332	L331	L330	
BSc Sociology with Data Science*	L310	L311	L312	As above plus GCSE Mathematics grade C/4

* subject to approval.
Some courses are available with a foundation year. See page 172 on Essex Pathways for details.

For all the information you need on courses, modules and graduate destinations, go to

essex.ac.uk/ug/sociology

SPEECH AND LANGUAGE THERAPY



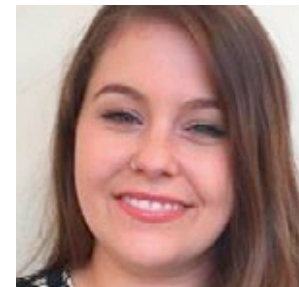
WHY ESSEX?

- 1** Undertake placements with a wide range of practice educators reflecting the growing employment opportunities for speech and language therapists
- 2** You're taught by experienced, registered, speech and language therapists with varied professional and research interests
- 3** Successful completion of our course provides eligibility to apply for professional registration with the Health and Care Professions Council and the Royal College of Speech and Language Therapists

POPULAR MODULES

- Anatomy and Physiology
- Culture of Communication
- Dysphagia
- Developmental Communication Difficulties
- Enhancing Communication

Speech and language therapists support individuals with communication, eating and drinking difficulties. Through a combination of placements and active learning, you'll develop professional reasoning and evidence-based practice skills. Our course is grounded in a social model approach to disability and supports you to offer those with speech and language difficulties more independence and choice.



"My course is designed to teach you the skills needed and prepare you to be the best you can be. I'm really looking forward to starting my placements, where I will work in a range of different clinical areas and workplaces."

Lauren Noy, BSc Speech and Language Therapy

COURSE	UCAS CODES			ENTRY REQUIREMENTS
	3 years	+ year abroad	+ placement year	
BSc Speech and Language Therapy	B630	B631	B632	<p>A-levels: BBB</p> <p>GCSE: English Language, Mathematics and Science C/4</p> <p>Access to HE Diploma: 45 level 3 credits at merit or above (in a relevant pathway)</p> <p>IB: 30 points, including Standard Level English, Mathematics or Maths Studies and Science grade 4, if not taken at Higher Level</p> <p>BTEC: DDD, depending on subject studied – advice on acceptability can be provided</p>

You must also have a satisfactory Occupational Health Check and enhanced Disclosure and Barring Service Check (DBS) – both of these are organised by the University.

If English is not your first language you will require IELTS 8.0, with a minimum of 7.5 in each element.

As part of the selection process you will be required to demonstrate a good knowledge and clear understanding of the significance of the NHS Constitution and its core values.

For all the information you need on courses, modules and graduate destinations, go to

essex.ac.uk/ug/slt

SPORT, EXERCISE, PERFORMANCE AND COACHING



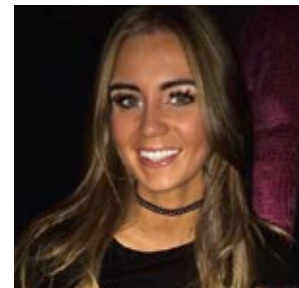
WHY ESSEX?

- 1** 91% of our sports science students express overall satisfaction with their course (NSS 2018)
- 2** Make the most of our first-class facilities in our brand new Sport Arena
- 3** You have the opportunity to gain work placement experience in professional sports clubs

POPULAR MODULES

- Biomechanics
- Health and Active Lifestyle
- Coaching Science
- Energy for Exercise
- Human Performance in Extreme Environments

How do Olympic athletes train? Who makes a good coach? How can exercise and physical activity influence health? At Essex we take sport and exercise seriously. We help you to understand the biology, physiology, biomechanics and psychology of sport, exercise and physical activity. You are taught by internationally recognised scientists and practicing coaches using our state-of-the-art facilities. Turn your passion for fitness and health into a career.



“All the academics are really helpful. Their expertise, experience and enthusiasm really enables students to develop and grow throughout their time at Essex.”

Nikki Twine, BSc Sports and Exercise Science

COURSE	UCAS CODES			ENTRY REQUIREMENTS
	3 years	+ year abroad	+ placement year	
BSc Sports and Exercise Science	C600	C602	C606	A-levels: BBB, including one science subject or Mathematics (PE and Psychology count as science A-levels) GCSE for BSc Sports and Exercise Science: Mathematics and Science grade C/4 GCSE for BSc Sports Performance and Coaching: Mathematics grade C/4
BSc Sports Performance and Coaching	C607	C608	C609	IB: 28 points, including Higher Level Science or Mathematics grade 5, and Standard Level Mathematics and Science grade 4, if not taken at Higher Level BTEC: DDD, depending on subject studied – advice on acceptability can be provided

If you do not meet the GCSE Science requirement but you have A-level Science or equivalent, please get in touch for advice.

For all the information you need on courses, modules and graduate destinations, go to

essex.ac.uk/ug/sports-coaching



SPORTS THERAPY



WHY ESSEX?

- 1** Our home is the brand new Sport Arena, which offers sporting facilities, research labs and a sports therapy clinic
- 2** We're ranked 9th for sports science (TGUG 2019) – learn from our experts
- 3** Our course is accredited by the Society of Sports Therapists – your passport to a broad range of careers

POPULAR MODULES

- Sport and Exercise Psychology
- Rehabilitation and Remedial Exercise
- Exercise Physiology
- Advanced Sports Therapy
- Advanced Sports Trauma Management

Gain the specialist skills and knowledge required to work as a sports therapist. With a focus on employability and self-development, we support you to become an autonomous practitioner. Taught by experts in the fields of sports therapy and sports and exercise science, you develop a range of treatment options including electrotherapy, exercise and manual skills.



“I enjoyed learning about how to assess an injury and using the electrotherapy machines and working in the clinic during my third year gave me a high level of responsibility.”

Megan Ayms, BSc Sports Therapy
Now working professionally as a Sports Therapist

COURSE	UCAS CODES			ENTRY REQUIREMENTS
	3 years	+ year abroad	+ placement year	
BSc Sports Therapy	C603	C605	C604	<p>A-levels: BBB, including one science subject or Mathematics (PE and Psychology count as science A-levels)</p> <p>GCSE: Mathematics and Science C/4</p> <p>IB: 30 points, including Higher Level Science or Mathematics grade 5, plus Standard Level Mathematics or Maths Studies grade 4, if not taken at a higher level</p> <p>BTEC: DDD, depending on subject and units studied – advice on acceptability can be provided</p>

If you do not meet the GCSE Science requirement but you have A-level Science or equivalent, please get in touch for advice.

For all the information you need on courses, modules and graduate destinations, go to

essex.ac.uk/ug/sports-therapy

ESSEX PATHWAYS

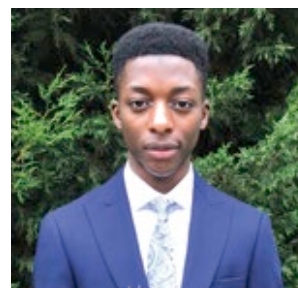
Undergraduate degrees
with a Year 0 pathway



WHY ESSEX?

- 1** Develop your knowledge and skills while benefiting from a dedicated support team
- 2** Collaborate with experts during your studies and take the time you need to prepare for professional life
- 3** Guarantee your place on your chosen course if you successfully complete your foundation year at Essex

With a Year 0 pathway (foundation year) at Essex you can unlock your potential, expand your knowledge and build your academic skills. We provide you with the resources you need to get the best from your studies, whatever your educational background. If you have big ideas, we can give you the confidence to express them. Join Essex as a foundation year student and find your own way forward.



Bello Bukhari Bello, LLB Law

“My lecturers gave me so much support which was really great. I had the chance to become a peer mentor and it developed my writing skills considerably and my passion for law grew while studying at Essex.”

At Essex we have a range of degree courses with a Year 0 pathway for UK and EU students which are listed on the following pages. If you have not met the entry requirements for a particular degree course but know Essex is the right place for you, then an Essex Pathways course is your way in.

Non-EU, international students should check page 181 for details about foundation pathways at University of Essex International College.

For all the information you need on courses, modules and graduate destinations, go to

essex.ac.uk/essex-pathways



Undergraduate degrees with a Year 0 (foundation year) pathway

These courses are designed for students who have not yet reached the required academic level for undergraduate study. We develop your subject knowledge as well as your academic skills. Our courses include a Year 0, followed by a further three or four years in your chosen department, leading to a Bachelors degree.

The entry requirements for these courses are 72 UCAS tariff points from at least two A-levels, or equivalent. Please note that some have additional requirements as follows:

* GCSE Maths at grade C/4 or above

** GCSE Maths and Science at grade C/4 or above

*** GCSE Maths and Science at grade C/4 or above plus an A-level (or equivalent) in a science subject

For further information, including how to apply, start dates and eligibility criteria (these courses are available to UK and EU students only) visit essex.ac.uk/essex-pathways

COURSE	UCAS CODES	
	4 years	5 years (year abroad)
ESSEX BUSINESS SCHOOL		
BSc Accounting*	N401	
BSc Accounting and Finance*	NN43	
BSc Accounting and Management*	NN42	
BSc Accounting with Economics*	N4L1	
BSc Business Management*	N201	
BSc Finance*	N301	
BSc Finance and Management*	N347	
BSc Marketing**	N505	
BSc International Business and Entrepreneurship**	N124	
BBA Business Administration**	N104	
BSc Tourism Management**	N835*	
LANGUAGE AND LINGUISTICS		
BA English Language and Linguistics	QQ16	
BA English Language and Literature	QQ24	
BA Teaching English as a Foreign Language	QX41	
BA Linguistics	Q102	
MODERN LANGUAGES		
BA Language Studies	Q143	
BA French Studies and Modern Languages		RR20
BA German Studies and Modern Languages		RR90
BA International Relations and Modern Languages		LR59
BA Italian Studies and Modern Languages		RR40
BA Modern Languages		R999

* please note that Year 0 of this course is taught at our Colchester Campus with the following three years being taught at our Southend Campus

COURSE	UCAS CODES	
	4 years	5 years (year abroad)
BA Modern Languages and English Language		RQ99
BA Modern Languages and Linguistics		RQ98
BA Modern Languages and Teaching English as a Foreign Language		R8T8
BA Modern Languages with Latin American Studies		R8T9
BA Spanish Studies and Modern Languages		RR50
BA Spanish, Portuguese and Brazilian Studies		RT99
COMPUTER SCIENCE AND ELECTRONIC ENGINEERING		
BSc Computer Science*	G403	
BEng Computers with Electronics*	GH46	
BEng Electronic Engineering**	H61P	
BEng Communications Engineering**	HP41	
MATHEMATICAL SCIENCES		
BSc Mathematics**	G104	
BSc Actuarial Science**	N325	
BSc Mathematics and Computing**	G1G8	
BSc Mathematics and Statistics**	9K18	
BSc Finance and Mathematics**	GN18	
BSc Data Science and Analytics**	I1GF	
BSc Economics and Mathematics**	LG18	
ECONOMICS		
BSc Economics*	L103	
BA Economics*	L102	
BSc Economics with Mathematics*	L1G8	
BSc Economics and Mathematics*	LG18	
BSc Financial Economics*	L117	
BA Financial Economics*	L118	
BSc International Economics*	L161	
BA International Economics*	L160	
BSc Management Economics*	L191	
BA Management Economics*	L190	
SOCIAL SCIENCES		
BA Communication and Digital Culture	P300	
BA Criminology	M903	
BA International Relations	L250	
BA Politics	L202	
BA Sociology	L304	
BA Sociology and Criminology	LMHX	
LAW		
LLB Law	M101	

COURSE	UCAS CODES	
	4 years	5 years (year abroad)
BIOLOGICAL SCIENCES		
BSc Biological Sciences***	CD00	
BSc Biomedical Science***	BD00	
BSc Marine Biology***	C161	
BSc Genetics***	CK00	
BSc Biochemistry***	CR00	
LITERATURE, FILM, AND THEATRE STUDIES		
BA Creative Writing	W808	
BA Drama	W408	
BA Drama and Literature	WQ28	
BA English and Comparative Literature	Q218	
BA English and United States Literature	T728	
BA English Literature	Q320	
BA Film and Creative Writing	PW88	
BA Film Studies	W628	
BA Film Studies and Literature	PQ38	
BA Literature and Creative Writing	QW38	
BA Literature and Sociology	LQ38	
INTERDISCIPLINARY STUDIES		
BA American Studies (United States)		T710
BA Criminology and American Studies		MT28
BA American Studies (United States) with Film		T7W8
BA Global Studies		L908
BA Latin American Studies		T7N3
BA Latin American Studies with Business Management		T7N4
BA Latin American Studies with Human Rights		T7M8
BA Liberal Arts	LQV0	Q900
BA European Studies		R008
BA European Studies with Politics		R9L8
BA European Studies with French		R9R8
BA European Studies with German		R9R6
BA European Studies with Italian		R9R7
BA European Studies with Spanish		R9R9
BA European Studies with Modern Languages		R9T8

COURSE	UCAS CODES	
	4 years	5 years (year abroad)
PHILOSOPHY AND ART HISTORY		
BA Philosophy	V502	V508
BA Philosophy and Art History	VV54	VVHP
BA Philosophy and History	VV51	VV5X
BA Philosophy and Law	MVC8	VM58
BA Philosophy and Literature	VQ51	VQ58
BA Philosophy and Politics	LV8M	LV2H
BA Philosophy and Sociology	LV83	VL58
BA Philosophy with Human Rights	V5M8	VLM8
BA Philosophy, Religion and Ethics	VV58	VV59
BA Curatorial Studies	V359	V35B
BA Art History and History	VV38	VV3B
BA Film Studies and Art History	VW38	VW3B
BA Literature and Art History	QV2H	QV3B
BA Art History	V350	V31B
BA Art History with Modern Languages		VR3B
BA Art History and Modern Languages		V3RB
HISTORY		
BA History and Economics*	LV18	
BA History	V102	
BA History and Criminology	MV98	
BA History and Literature	QV2C	
BA History and Sociology	LV38	
BA History with Film Studies	V1W8	
BA History with Human Rights	V1L8	
BA Modern History	V144	
BA Modern History and International Relations	VL18	
BA Modern History and Politics	LV28	
PSYCHOSOCIAL AND PSYCHOANALYTIC STUDIES		
BA Childhood Studies	L523	
BA Psychosocial and Psychoanalytic Studies	C89C	
PSYCHOLOGY		
BSc Psychology*	C807	
BA Psychology*	C812	
BSc Psychology with Cognitive Neuroscience*	C813	

You can apply through UCAS for these courses. EU students can apply directly through our website essex.ac.uk/direct

I so do not miss
A levels results day
but good luck to
everyone!!

@Uni_of_Essex was
the best decision
I've ever made

 @SamuelWebb


Just been to the
@Uni_of_Essex
Open Day and I'm
so excited to be
studying there
next year

 @imkatie

People from
Essex uni are
amazing I
swear!

 @Yiigaa

Went to check out
Essex today and it's
actually made me
regret taking a gap
year - I wanna
go now!

 @tinyhandgeorgie

ENOUGH ABOUT US, WE'D LOVE TO HEAR FROM YOU.

There's a whole online community talking about student life at Essex. Join the conversation on Facebook, keep up with the latest news on Twitter, get a glimpse of campus life on Instagram and Snapchat and see what we've been up to on YouTube. We have an open-ear policy when it comes to social media and respond to every enquiry – or message us via Live Chat on our website and get your questions answered without delay.

So, if something is on your mind, get in touch, we love a good chat!
[#myEssex](#)

essex.ac.uk/we-are-essex

 /uniofessex

 /Uni_of_Essex

 /uniessex

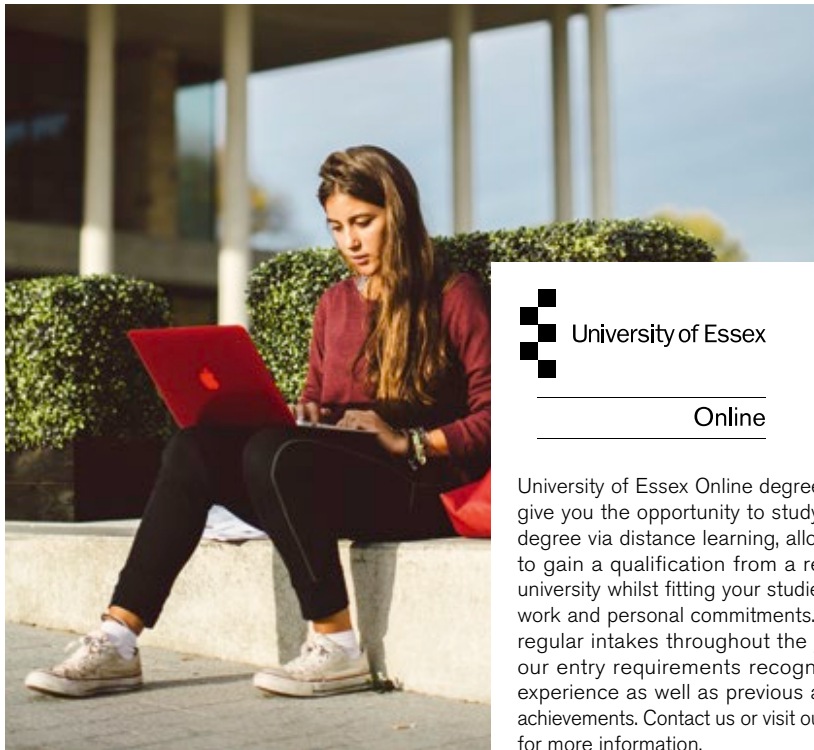
 /uniessex

 /uniofessex

 uniofessex

OUR UK PARTNERS

We are committed to making an Essex education available through a range of provision, working closely with partner institutions to develop and maintain high-quality and accessible learning opportunities.



University of Essex

Online

University of Essex Online degree courses give you the opportunity to study for your degree via distance learning, allowing you to gain a qualification from a respected university whilst fitting your studies around work and personal commitments. We have regular intakes throughout the year, and our entry requirements recognise work experience as well as previous academic achievements. Contact us or visit our website for more information.

T +44 (0)800 0527 526

E enquiries@online.essex.ac.uk
online.essex.ac.uk



University of Essex

International College

The University of Essex International College is based at the University's Colchester Campus, and is a partnership between the University of Essex and Kaplan International Pathways. The college provides pathway courses and pre-sessional English language courses that prepare international students for their degrees. These courses are delivered and awarded by Kaplan, in partnership with the University of Essex.

Successful completion of a Foundation Certificate (available to international students in the subject areas of Humanities, Social Sciences, and Science and Health) would

enable progression to the first year of a relevant degree, and an International Year One course (available to international and EU students, and offered in Business or Economics) would enable progression to the second year of a relevant degree. If students successfully complete their course at the University, they will graduate with a degree from the University of Essex.

Kaplan provides fantastic study opportunities to international students, and since 2005 thousands of students from every corner of the globe has started their path to success with a Kaplan pathway course.

For the most up-to-date course information please refer to the Kaplan pathways website.

kaplanpathways.study/contact-essex
kaplanpathways.partners/essex

AND WHEN IT'S ALL OVER...



You'll be one of a 95,000-strong alumni community that stays in touch and meets regularly all over the world. You'll also have free access to the CareerHub+ after graduation, free access to academic journals and discounts on further study. Take a look at what our alumni are up to

essex.ac.uk/alumni



OUR GREAT LOCATION



COLCHESTER TO:

- Central London: 60 miles (97km); 45 minutes to 1 hour by train, 1 hour and 40 minutes by car.
- Stansted Airport: 33 miles (53km); 1 hour and 15 minutes by bus, 50 minutes by car.
- Southend Airport: 41 miles (66km); 1 hour and 15 minutes by train, 1 hour by car.
- Gatwick Airport: 83 miles (133km); 1 hour and 50 minutes by train, 1 hour and 40 minutes by car.
- Heathrow Airport: 90 miles (150km); 2 hours and 10 minutes by train, 1 hour and 55 minutes by car.
- Harwich International Port: 20 miles (33km); 25 minutes by train, 35 minutes by car.

SOUTHEND TO:

- Central London: 40 miles (64km); 45 minutes to 1 hour by train, 1 hour and 20 minutes by car.
- Southend Airport: 3 miles (5km); 15 minutes by bus, 10 minutes by car.
- Stansted Airport: 40 miles (64km); 1 hour and 30 minutes by bus, 1 hour by car.
- Gatwick Airport: 62 miles (100km); 2 hours by train, 1 hour and 10 minutes by car.
- Heathrow Airport: 76 miles (122km); 2 hours by train, 1 hour and 20 minutes by car.
- Harwich International Port: 61 miles (98km); 2 hours by train, 1 hour and 25 minutes by car.

OUR CAMPUSES

- Colchester
- Southend
- Loughton



LOUGHTON TO:

- Central London: 16 miles (25km); 42 minutes by train, 45 minutes by car.
- London City Airport: 14 miles (19km); 40 minutes by train, 25 minutes by car.
- Stansted Airport: 25 miles (43km); 1 hour and 28 minutes by train, 30 minutes by car.
- Gatwick Airport: 59 miles (103km); 1 hour and 30 minutes by train, 1 hour and 20 minutes by car.
- Heathrow Airport: 33 miles (74km); 40 minutes by train, 1 hour by car.
- Harwich International Port: 74 miles (120km); 1 hour and 30 minutes by car.

essex.ac.uk/travel

IMPORTANT INFORMATION

About this prospectus

When we might make changes to advertised courses and other information

This prospectus tries to answer your questions about life and academic provision on offer at the University of Essex. It was prepared early in 2019 and refers to courses which will be available in October 2020. The University makes every effort to ensure the prospectus is accurate at the time it is printed. Exceptionally, it can be necessary to make changes, for example to courses, facilities or fees due to legitimate staffing, financial, regulatory or academic reasons. Examples of such reasons might include a change of law or regulatory requirements, industrial action, lack of demand, departure of key personnel, change in government policy, or withdrawal or reduction of funding. Changes to courses may for example consist of variations to the content and method of delivery of programmes, courses and other services, to discontinue programmes, courses and other services and to merge or combine programmes or courses. If a course change or closure is proposed in such circumstances the University will take all reasonable steps to minimise disruption to students. This will include informing students of the changes in advance and giving them appropriate opportunity to comment on the proposals.

A course would only be closed in exceptional circumstances. If it is ever necessary to close a course the University's preferred approach would be to continue to teach current students on that course until they have completed their studies. If exceptionally that is not possible, the University will explore other options with the affected students for example by considering whether those students can be offered places on alternative courses, or whether their studies can be completed at another institution.

[essex.ac.uk/subjects](https://www.essex.ac.uk/subjects)
[essex.ac.uk/fees](https://www.essex.ac.uk/fees)

No liability for matters outside our control

The University cannot be held responsible for failure/delay in performing obligations caused by things beyond its reasonable control, such as fire, flood or industrial action.

University terms and conditions, procedures, rules and regulations

Applicants are considered in line with the University's Undergraduate Admissions Policy and the Regulations relating to Admission (listed under Academic Regulations), which can be found online at:

[essex.ac.uk/admissions-policy](https://www.essex.ac.uk/admissions-policy)
[essex.ac.uk/admissions-regs](https://www.essex.ac.uk/admissions-regs)

If your application to the University of Essex is successful, by accepting the offer you will be entering into a legal contract with us, subject to fulfilling any conditions included in your offer. Your rights and obligations to us and our rights and obligations to you will be detailed in the information that we provide once the offer has been made. Applicants and registered students must comply with the University's regulations, policies and procedures as part of their contract. A full set of the University Regulations is available at:

[essex.ac.uk/regs](https://www.essex.ac.uk/regs)

The full Procedures, Rules and Regulations of the University, governing how it operates, are set out in the Charter, Statutes and Ordinances and in the University Regulations, Policy and Procedures.

[essex.ac.uk/about/governance/regulations/students.aspx](https://www.essex.ac.uk/about/governance/regulations/students.aspx)

Quality assurance

The Quality Assurance Agency's Higher Education Review of the University in December 2014 covered every aspect of the University's provision and confirmed that the University had met all expectations and meets national requirements for standards and quality.

The University was commended for the strong focus on improving all areas of the student learning experience. The high-quality research environment and development opportunities offered to postgraduate research students were recognised, along with our commitment to listening and responding to student feedback, and to providing our students with opportunities to improve their employment skills and prospects.

[qaa.ac.uk](https://www.qaa.ac.uk)

Complaints procedure

The University is committed to equality of opportunity for all applicants, and the University's admissions policies, procedures and processes are designed to ensure that all applicants are considered fairly, consistently and in accordance with professional standards. The Undergraduate Admissions Office strives to provide a high quality experience for all applicants throughout the admissions cycle. In the event that an applicant is dissatisfied with any aspect of the University's admissions process, procedure or policy and wants to submit a formal complaint, they can do so via the 'Complaints policy for applicants'. This policy can be found in full via the link in our Undergraduate Admissions Policy at:

[essex.ac.uk/admissions-policy](https://www.essex.ac.uk/admissions-policy)

Policy statement on equality and diversity

The University of Essex celebrates diversity, challenges inequality and is committed to sustaining an inclusive and diverse community that is open to all who have the potential to benefit from membership of it and which ensures equality of opportunity for all its members. We expect employees, workers, contractors, students and visitors to be treated, and to treat each other, with dignity and respect regardless of age, disability, gender identity, marriage and civil partnership status, pregnancy and maternity, race, religion or belief, sex, sexual orientation, socio-economic background, political beliefs and affiliations, family circumstances or other irrelevant distinction.

Government funding

At the time of going to print, some detailed aspects of government funding had not been announced. As such, our figures are based on amounts for students entering in 2019, and may be subject to change or real-term increases. Visit our website for more information.

[essex.ac.uk/fees](https://www.essex.ac.uk/fees)

Tuition fee increases during your studies

The tuition fees for 2020-21 have not yet been confirmed. We will publish them on the website as soon as they are available.

[essex.ac.uk/fees](https://www.essex.ac.uk/fees)

For reference, the fees for UK and Channel Islands students commencing their studies in 2019 were set at £9,250.

In previous years, the tuition fee has increased for each academic year of study. The 2019 fee was frozen but we do not know yet if, or when, this will change. Previous increases were limited to the annual increase in the RPI-X index.

Fees for full-time undergraduate students with a Home fee status (which currently includes EU students*) remain subject to UK Government approval.

* The fee status of EU students may be subject to review should the terms of the UK's withdrawal from the European Union change the legal status of EU students.

For full-time undergraduate students with an international fee status, this annual increase will be 5% or the annual increase in the RPI-X index, whichever is the higher.

[essex.ac.uk/fees](https://www.essex.ac.uk/fees)

East 15 Acting School at our Loughton Campus

This prospectus refers mainly to the services, facilities and courses on offer at our Colchester Campus and at our Southend Campus. Our Loughton Campus is the base for students on many of East 15 Acting School's courses and includes state-of-the-art studios, technical equipment and innovative theatre space. Our Loughton Campus is just five minutes from the nearest London Underground station, Debden, on the east end of the Central line.

[east15.ac.uk](https://www.east15.ac.uk)

Alternative formats

This prospectus is available in large print, audio and Braille formats. Please contact our Admissions Office for further information.

E_admit@essex.ac.uk

Photography

Every effort has been made to obtain permission to reproduce the images contained herein. Please get in touch if you have any queries or any information relating to the images.

E_prospectus@essex.ac.uk

Data for marketing purposes

Data has been selected for marketing purposes but all claims are based on the most recent data that were available at the time of print: Research Excellence Framework (REF) results are based on 2014 data*; QS World University Rankings (by Subject) results are based on 2018 data; Times Higher Education (THE) World University Rankings results are based on 2018 data; National Student Survey (NSS) results based on 2018 data; employability figures are based on the Destinations of Leavers from Higher Education survey (DLHE 2017); The Times and Sunday Times Good University Guide (TGUG) results are based on 2019 data; Guardian University Guide results are based on the 2019 publication; National Employability Awards (NUE) results are based on 2018 awards.

* REF 2014, mainstream universities, THE 2014. The University's preferred methodology is intensity-weighted Grade Point Average, denoted by the phrase 'research excellence'. Rankings are intensity based on the THE REF 2014 intensity ranking of 19 December 2014.

INDEX

For subject areas, please see page 74.

Access to HE Diploma	70	International students	48, 70, 73
Accommodation	52-61	Language learning	42
Alumni	182	Libraries	21
Applying to Essex	68	Living expenses	73
Campus – Colchester	24	Loans	72
Campus – Southend	28	Location and travel	184
Careers and employability	10, 12, 14, 44	Mature students	46
Childcare (see Day Nursery)		Mental health	46
Clubs and societies	32	Open Days	66
Commuting	46	Placements and internships	45
Contact information	190	Qualifications (see entry requirements)	
Culture and arts	22, 62	Quality assurance	186
Day Nursery	24, 46	Rankings	6
Deferred entry	69	Research	39-41
Disabled students	46	Scholarships and bursaries	73
Distance learning (see University of Essex Online)		Second or final year entry	69
East 15 Acting School	71, 80, 187	Sport	21, 32, 34, 36
Edge Hotel School	124	Student satisfaction	6
English language requirements and support	70	Student stories	10-17
Entry requirements	70, 77	Student services/support	20, 46
Equal opportunities	187	Students' Union (SU)	32
Essex Business School	20, 78, 94, 140	Studying abroad	42
Essex – local area	62, 184	Theatres	22
Essex Pathways	172	Therapeutic care	158
Facilities	20	Tuition fees (see fees and funding)	
Fees and funding	72, 187	UCAS	69
Foundation years (see Essex Pathways)		University of Essex International College	181
Health centre	24	University of Essex Online	180
Hotel management	124	Visas	70
International Baccalaureate	70	Visiting the University	66, 184
International foundation programmes (see University of Essex International College)		Worship facilities	23
		Year 0 (see Essex Pathways)	

Designed by Print Essex and printed by Belmont Press using processless plate technology, on isopropyl alcohol free presses, significantly reducing the environmental impact of the printing process. All production processes are ISO14001 certified, and are independently audited by the British Standards Institute on a bi-annual basis. All waste streams are regularly benchmarked against the requirements of the waste hierarchy in order that undesired outputs are prevented, minimised, re-used, or ultimately recycled. ExtraPrint paper is PEFC accredited, sustainably sourced and is fully recyclable and biodegradable.

ISBN 978-1-909562-19-6
© University of Essex 2019

CREDIT WHERE CREDIT'S DUE

We would like to thank all the students and alumni who agreed to be interviewed and supplied testimonials.

We would particularly like to thank all the student contributors, photographers and Instagrammers who kindly granted us permission to use their content.

- | | |
|----------------------|----------------------|
| ➤ @ajrwrphotographer | ➤ @karen_waddy |
| ➤ @alierdenay | ➤ @kat.raicevic |
| ➤ @ar_monika | ➤ @kirstybeedie |
| ➤ @basmaalhashimi | ➤ @kworach00 |
| ➤ @charalambos_v | ➤ @lewis.adger |
| ➤ @choobean | ➤ Liam Knapp-Bates |
| ➤ @cncsnaphthemoment | ➤ @melanin_king_1887 |
| ➤ @dandy_does | ➤ @michael_ts_ |
| ➤ @daniel.lim13 | ➤ @nabeel_akhtar |
| ➤ @danwaring | ➤ @natalie_haas_unyd |
| ➤ @demetra.cojocariu | ➤ @Nick_Winter |
| ➤ @dom_bash | ➤ Olivia Burns |
| ➤ @ellajay95 | ➤ @omarelsafyy |
| ➤ @elodieberet | ➤ Philip Kasumu |
| ➤ @emilydelva | ➤ @radelkii |
| ➤ Emma Ward | ➤ @scuzelove |
| ➤ @essexbladespool | ➤ @shanghaihannah |
| ➤ @feng_wang_allen | ➤ @siobhan.ralfe |
| ➤ @georgiacranmer | ➤ @sugarway_5 |
| ➤ @harrylo | ➤ @trisha_lalala |
| ➤ @helentist | ➤ @worlthroughmyeyes |
| ➤ @j0liexx | ➤ @ybykyoga |
| ➤ Jordan Milne | |

Additional professional photography by Paul Tait and Grace Hill.

If you would like more information, or have questions about any aspect of applying to Essex, please contact us.

T +44 (0)1206 873666

E admit@essex.ac.uk

Campus contact details

University of Essex
Colchester Campus
Wivenhoe Park
Colchester CO4 3SQ
United Kingdom

T +44 (0)1206 873333

University of Essex
Southend Campus
Elmer Approach
Southend-on-Sea SS11LW
United Kingdom

T +44 (0)1702 328200

University of Essex
Loughton Campus
Rectory Lane
Loughton IG10 3RY
United Kingdom

T +44 (0)20 8508 5983

 **/uniofessex**

 **/Uni_of_Essex**

 **/uniessex**

 **/uniessex**

 **/uniofessex**

 **uniofessex**



This prospectus is **completely recyclable, so even though we hate the thought of you throwing it away and hope you'll treasure it forever, please dispose of it in your recycling and help the planet!**

WE ARE ESSEX. WE'RE ON THE SIDE OF **PEOPLE WITH GUTS** – REBELS WITH A CAUSE. WE'RE ABOUT PEOPLE WHO **LOVE TO LEARN HOW**, BUT **WANT TO CHALLENGE WHY**. BUT WHY DO WE HAVE TO STOP HERE? WHY CAN'T WE TAKE IT FURTHER, TO THE BIT WHERE IT REALLY GETS INTERESTING? WE'RE ABOUT THE PEOPLE WHO HUDDLE OUTSIDE A CLASS LONG AFTER IT'S FINISHED BECAUSE THERE'S MUCH **MORE TO BE SAID**, MORE ARGUMENTS TO BE HAD. WE'RE ABOUT PEOPLE WHO ARE BOLD ENOUGH TO **CHALLENGE INEQUALITY** AND THE STATUS QUO. PEOPLE WHO DON'T EXPECT THE WORLD TO CHANGE SIMPLY BECAUSE THEY LIKED A FACEBOOK STATUS OR NODDED WHEN SOMEONE ELSE SPOKE. AT ESSEX YOU'RE NOT JUST A STUDENT, **YOU'RE A MEMBER**, SOMEONE WITH GENUINE LICENCE TO SHAPE WHAT GOES ON AROUND YOU. TO US IT DOESN'T MATTER WHERE YOU'VE COME FROM. WE'RE INTERESTED IN HOW YOU WANT TO GROW AND **WHAT YOU WANT TO CHANGE**. WE'RE AFTER PEOPLE WHO WILL HELP US PUSH THE FRONTIERS OF KNOWLEDGE. **CHALLENGING CONVENTION** IS IN OUR DNA. ALL OF WHICH LEAVES YOU WITH A DECISION: ARE YOU GOING TO SIT AND WATCH THE WORLD GO BY? OR DO YOU HAVE THE **COURAGE AND ENERGY** TO SHAPE IT? WE'LL HELP YOU EXPLORE, QUESTION AND CREATE **POWERFUL IDEAS**. WE'LL INTRODUCE YOU TO PEOPLE FROM EVERY CORNER OF THE PLANET, A **GENUINELY GLOBAL COMMUNITY** THAT LIVES, WORKS AND PLAYS TOGETHER. IF YOU GIVE UP AT THE FIRST HURDLE, ESSEX ISN'T FOR YOU. IF YOU WANT TO BE SPOON-FED A DEGREE, ESSEX ISN'T FOR YOU. IF YOU ARE BRAVE ENOUGH TO HAVE IDEAS AND GENEROUS ENOUGH TO SHARE THEM, **WELCOME HOME**.

[essex.ac.uk](https://www.essex.ac.uk)



Cover images from #myessex submissions.