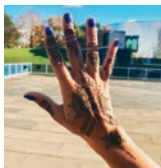


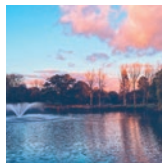
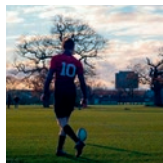


University of Essex



ESSEX OPEN DAY

UNIVERSITY OF THE YEAR **THE AWARDS** 2018





CONTENTS

The general stuff 7

Campus map
Plan your day

Talks & Tasters 11

General talks
A-Z subject talks and tasters

Accommodation & Tours 23

Accommodation and Campus tours
Accommodation information

Other handy stuff 39

Food on Campus
Join us on social
First aid and emergencies

➤ **Our Open Day runs
from 9.30am - 4.00pm**

University of Essex
Wivenhoe Park
Colchester CO4 3SQ

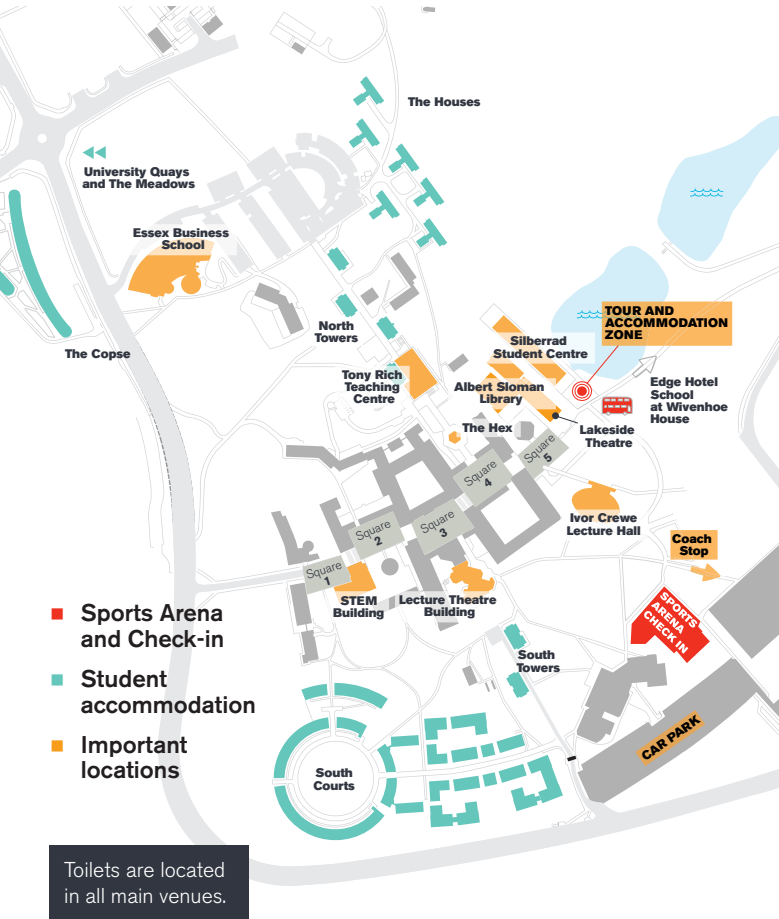


@aarianoushka

The General Stuff

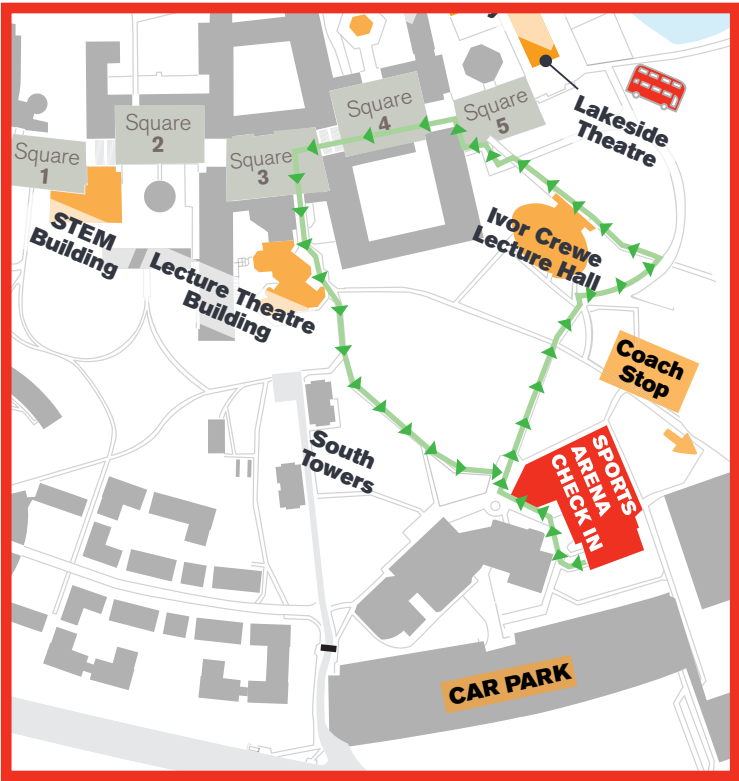
OPEN DAY MAP

Colchester Campus Overview



OPEN DAY MAP

Colchester Central Campus



➡➡➡ Route from Sports Arena through main campus

Our Open Day is choc-full of students to meet, academics to quiz, courses to explore and activities to try. Here's a handy checklist to help you make the most of your day.

- 10

TIME	WHAT	WHERE
9.30am	Open Day begins	
10.00 – 10.20am	Welcome Talk	Ivor Crewe Lecture Hall Auditorium
4.00pm	Open Day finishes – time to go home :(



Talks and Tasters



@nikos_hasanaj

General Talks

TALK	TIME	LOCATION
Welcome to our Open Day	10.00 – 10.20am and 12.30 - 12.50pm	ICLH Auditorium
Postgraduate Applying	10.30 - 11.00am and 2.15 - 2.45pm	ICLH Seminar Room
Accommodation	10.30 - 11.00am and 1.00 - 1.30pm	ICLH Auditorium
Employability	11.15 - 11.35am and 1.50 - 2.10pm	ICLH Seminar Room
Postgraduate Student Life	11.50 - 12.20pm and 3.00 - 3.30pm	ICLH Seminar Room
Student Finance	11.50 - 12.20pm and 3.15 - 3.45pm	ICLH Auditorium
Postgraduate Funding	12.30 - 1.00pm	ICLH Seminar Room
Personal Statement Workshop	1.15 - 1.35pm	ICLH Seminar Room
Study Abroad	1.50 - 2.10pm	ICLH Auditorium
Undergraduate Student Life	2.40 - 3.10pm	ICLH Auditorium

ICLH - Ivor Crewe Lecture Hall



A-Z SUBJECT TALKS AND TASTERS

Key for Faculty

■ Faculty of Humanities
■ Faculty of Social Sciences

■ Faculty of Science and Health

Key for locations

SQ4 Square 4

SQ5 Square 5

EBS Essex Business School

LTB Lecture Theatre Building

TC Tony Rich Teaching Centre

STEM Square 1

DESCRIPTION	TIME	LOCATION
-------------	------	----------

ACCOUNTING, FINANCE AND BANKING, MANAGEMENT AND MARKETING

Essex Business School Welcome Talk	10.45am – 11.30am and 12.45 - 1.30pm	EBS 2.2
Accounting Taster (followed by an introduction to the EBS Trading Floor and a Bloomberg taster session)	11.30am – 12.15pm and 1.30 - 2.15pm	EBS 2.34
Finance Taster (followed by an introduction to the EBS Trading Floor and a Bloomberg taster session)	11.30am – 12.15pm and 1.30 - 2.15pm	EBS 1.1
Management and Marketing Taster	11.30am – 12.00pm and 1.30 - 2.15pm	EBS 2.2
Tour of Essex Business School	Drop in between 10am – 4pm	EBS Foyer

THE ESSEX MBA

The Essex MBA CV Workshop	12.30pm - 1.00pm	EBS 2.50
----------------------------------	------------------	----------

MASTERS AT ESSEX BUSINESS SCHOOL

Masters drop in Q&A	Drop in between 11.30am and 2.15pm	Bonds Cafe, EBS
--------------------------------	------------------------------------	-----------------

DESCRIPTION	TIME	LOCATION
-------------	------	----------

ACTUARIAL SCIENCE

Actuarial Science, Data Science and Mathematics Talk	10.30 – 11.45am and 1.45 – 3.00pm	STEM 3.1
Actuarial Science Taster	11.45am – 12.15pm	

AMERICAN STUDIES

Interdisciplinary Studies Talk	10.30 – 11.00am	TC 1.16
American Studies Taster	11.00 – 11.30am	TC 1.16

ART HISTORY

Art History Talk	10.30 – 11.00am	Hex, SQ4
Art History Taster	11.00 – 11.30am	Hex, SQ4

BIOCHEMISTRY, AND BIOMEDICAL SCIENCE

Biochemistry and Biomedical Sciences Talk, followed by Demonstrations and a Taster	10.30 - 11.30am	Meet in LTB 5
Demonstration and Taster	12.45 - 1.15pm	LTB 5

BIOLOGICAL SCIENCES

Biological Sciences and Genetics Talk, followed by Demonstrations and a Taster	10.30 – 11.30am	Meet in LTB 3
Demonstration and Taster	12.45 - 1.15pm	LTB 5

DESCRIPTION	TIME	LOCATION
CHILDHOOD STUDIES		
Psychosocial and Psychoanalytic Studies Talk	10.30 – 11.00am and 1.45 – 2.15pm	TC 1.10
Childhood Studies Taster	11.00 – 11.30am and 2.15 – 2.45pm	TC 1.10
COMPUTER SCIENCE AND ELECTRONIC ENGINEERING		
Computer Science and Electronic Engineering Talk, followed by a lab tour	10.30 – 11.45am and 1.45 – 3.00pm	LTB 6
CRIMINOLOGY		
Sociology and Criminology Talk	10.30 – 11.00am and 1.45 – 2.15pm	LTB 10
Criminology Taster	11.00 – 11.30am	LTB 10
DATA SCIENCE		
Actuarial Science, Data Science and Mathematics Talk (followed by a taster session)	10.30 – 11.45am and 1.45 – 3.00pm	STEM 3.1
DRAMA		
Drama Talk	10.30 – 11.00am and 1.45 – 2.15pm	Lakeside Theatre Square 5
Taster - Status and Spontaneity	11.00 – 11.30am	
Taster - Playing with Text	2.15 – 2.45pm	
ECONOMICS		
Economics Talk	10.30 – 11.00am and 1.45 – 2.15pm	TC 2.14/15
Economics Taster	11.00 – 11.30am and 2.15 – 2.45pm	TC 2.14/15

DESCRIPTION	TIME	LOCATION
EDGE HOTEL SCHOOL		
Hospitality, Hotel and Events Management Talk and Taster	10.30 – 11.30am and 1.45 – 2.45pm	LTB 4
Wivenhoe House hotel, home of the Edge Hotel School	9.30 - 10.30am	From Wivenhoe House hotel reception
	After 10.30am	Meet at Edge Hotel School stand in Sports Arena for next available hotel tours
ENGLISH LANGUAGE AND LINGUISTICS		
English Language and Linguistics Talk	10.30 – 11.00am	TC 2.6/7
English Language and Linguistics Taster	11.00 – 11.30am	TC 2.6/7
ESSEX PATHWAYS		
What is a Foundation Year?	10.30 – 11.00am and 1.45 – 2.15pm	TC 1.17
EUROPEAN STUDIES		
Interdisciplinary Studies Talk	10.30 – 11.00am	TC 1.16
FILM STUDIES		
Film Studies Talk	10.30 – 11.00am	LTB 9
Film Studies Taster	11.00 – 11.30am	LTB 9
Tour of the facilities	2.00 – 2.30pm	Meet in LTB Foyer

DESCRIPTION	TIME	LOCATION
GENETICS		
Biological Sciences, Genetics and Genomics Talk	10.30 - 11.00am	LTB 3
Lab Tour and Demonstrations	11.00 - 11.30am and 12.15 - 12.45pm	Meet in LTB 3
GLOBAL STUDIES		
Interdisciplinary Studies Talk	10.30 - 11.00am	TC 1.16
Global Studies Taster	11.00 - 11.30am	TC 1.16
HISTORY		
History Talk	10.30 - 11.00am and 1.45 - 2.15pm	LTB 8
History Taster	11.00 - 11.30am	LTB 8
History Taster	2.15 - 2.45pm	LTB 8
JOURNALISM		
Journalism Talk and Tour	12.00 - 12.30pm and 3.00 - 3.30pm	LTB 4
LATIN AMERICAN STUDIES		
Interdisciplinary Studies Talk	10.30 - 11.00am	TC 1.16
Latin American Studies Taster	11.00 - 11.30am	TC 1.16
LAW AND HUMAN RIGHTS		
Law and Human Rights Talk	10.30 - 11.00am and 1.45 - 2.15pm	LTB 1
Law and Human Rights Taster and Tour	11.00 am - 12pm	LTB 1
Law and Human Rights Taster and Tour	2.15 - 3.15pm	LTB 1

DESCRIPTION	TIME	LOCATION
LIBERAL ARTS		
Interdisciplinary Studies Talk	10.30 - 11.00am	TC 1.16
Liberal Arts Taster	11.00 - 11.30am	TC 1.16
LITERATURE AND CREATIVE WRITING		
Literature and Creative Writing Talk	10.30 - 11.00am and 1.45 - 2.15pm	TC 2.12/13
Literature Taster	11.00 - 11.30am and 2.15 - 2.45pm	TC 2.12/13
Creative Writing Taster	11.00 - 11.30am and 2.15 - 2.45pm	TC 1.13
MARINE BIOLOGY		
Marine Biology Talk, followed by Demonstrations and a Taster	12.30 - 1.30pm	Meet in LTB 3
Demonstration and Taster	2.30 - 3pm	Meet in LTB 3
MATHEMATICS		
Actuarial Science, Data Science and Mathematics Talk (followed by a taster session)	10.30 - 11.45am and 1.45 - 3.00pm	STEM 3.1
MODERN LANGUAGES		
Modern Languages Talk	1.45 - 2.15pm	TC 2.6/7
Modern Languages Taster	2.15 - 2.45pm	TC 2.6/7
ADULT NURSING		
Adult Nursing Talk and Taster (including an Escape Room Challenge)	10.30 - 11.30am and 1.15 - 2.15pm	5S.3.7

DESCRIPTION	TIME	LOCATION
MENTAL HEALTH NURSING		
Mental Health Nursing Talk and Taster (including an Escape Room Challenge)	10.30 – 11.30am and 1.15 – 2.15pm	5S.3.7
OCCUPATIONAL THERAPY		
Occupational Therapy Talk and Taster (including an Escape Room Challenge)	12.00 – 1.00pm and 2.30 – 3.30pm	5S.3.7
PHILOSOPHY		
Philosophy Talk	10.30 – 11.00am	TC 2.8/9
Philosophy Taster	11.00 – 11.30am	TC 2.8/9
PHYSIOTHERAPY		
Physiotherapy Taster	12.45 – 1.45pm	Meet in LTB 4
POLITICS AND INTERNATIONAL RELATIONS		
Politics and International Relations Talk	10.30 – 11.15am and 1.45 – 2.30pm	LTB 7
Politics and International Relations Taster	11.15 – 11.45am	LTB 7
Politics and International Relations Taster	2.30 – 3.00pm	LTB 7
PSYCHOANALYTIC STUDIES		
Psychosocial and Psychoanalytic Studies Talk	10.30 – 11.00am and 1.45 – 2.15pm	TC 1.10
Psychoanalytic Studies Taster	11.00 – 11.30am and 2.15 – 2.45pm	TC 1.8
PSYCHOLOGY		
Psychology Talk and Taster	12.00 – 12.40pm	LTB 6

DESCRIPTION	TIME	LOCATION
Interactive tour of the department (sign up at the Psychology stand in the Sports Arena)	Tours start at: 10.30am, 11.15am, 12.40pm, 1.30pm and 2.15pm	Once you have signed up, tours will leave from the LTB Foyer
SOCIOLOGY AND SOCIAL ANTHROPOLOGY		
Sociology and Criminology Talk	10.30 – 11.00am and 1.45 – 2.15pm	LTB 10
Social Anthropology Taster	11.30am – 12.00pm	LTB 10
Communications and Digital Culture Taster	2.15 – 2.45pm	LTB 9
Sociology Taster	2.15 – 2.45pm	LTB 10
SPEECH AND LANGUAGE THERAPY		
Speech and Language Therapy Talk and Taster (including an Escape Room Challenge)	10.30 – 11.30am and 1.15 – 2.15pm	5S.3.8
SPORTS AND EXERCISE SCIENCE		
Sports and Exercise Science Talk and Tour	1.45 – 2.45pm	LTB 2
SPORTS PERFORMANCE AND COACHING		
Sports Performance and Coaching Talk and Tour	11.30 – 12.30pm	LTB 2
SPORTS THERAPY		
Sports Therapy Talk and Tour	10.30 – 11.30am	LTB 2
THERAPEUTIC CARE		
Psychosocial and Psychoanalytic Studies Talk and Taster	10.30 – 11.00am and 1.45 – 2.15pm	TC 1.10
Therapeutic Care Taster	11.00 – 11.30am and 2.15 – 2.45pm	TC 1.9



Accommodation and Tours



@franzwho

ACCOMMODATION TOURS

We run open accommodation which allows you to see as much or as little of our accommodation as you like.

The figures on the following pages show the current cost per week. It is likely that our rental charges for 2020-21 will increase from these prices. We'll publish the new rent charges on our website as soon as they are available.

Check which accommodation is available for you:

UG - available for undergraduate students

PG - available for postgraduate students

CAMPUS TOURS

Join one of our friendly students for a guided tour around campus.

Tours of campus will run every 15 minutes from the Tour and Accommodation Zone by the Silberrad Student Centre. Our campus is pretty big and can be a little confusing, so a tour with a student ensures you don't miss anything there is to see on our wonderful campus! Tours last approximately 30 minutes.



THE TOWERS

YOU'LL LOVE THIS IF YOU...

don't mind sharing, would rather spend your money on pizza, don't have a fear of heights, like meeting lots of people, want to live in an iconic building

Size: 1,142 rooms

Cost per week:

£99.05 - £101.50

**13-16 rooms per flat,
shared showers and toilets.**

5 minute walk to campus
UG & PG



@ajrwphotographer
@nabeel_akhtar

SOUTH COURTS

Size: 1,218 rooms

Cost per week:
£150.78 - £152.95

4-12 rooms per flat, en suite facilities, some adapted rooms available.

5 minute walk to campus

YOU'LL LOVE THIS IF YOU...

want your own bathroom,
like a 5 minute commute to lectures,
want to be near the gym, love a good social life,
want a modern feel



@rc_amt

THE MEADOWS

YOU'LL LOVE THIS IF YOU...

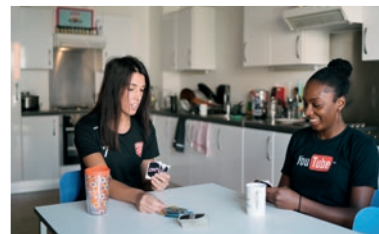
need chilled vibes, fancy a little stroll on to campus in the mornings, like to starfish in a 4ft wide bed, want to be closer to town and the train station

Size: 228 townhouse rooms plus 420 flats with en suite rooms

Cost per week:
£150.43 - £156.94

**12 rooms per townhouse.
5-7 rooms per flat.**

10-15 minute walk from campus



THE HOUSES

YOU'LL LOVE THIS IF YOU...

want a quieter lifestyle, like to be surrounded by meadows and nature, want a homely feel, need a bit more space

Size: 267 rooms

Cost per week:

£136.92 - £148.75

4-6 rooms per flat, en suite facilities, some adapted rooms available.

5 minute walk to campus



@peachp7

UNIVERSITY QUAYS

University Quays

Size: 766 rooms

Cost per week from:

£143.78 - £169.05

**7-8 rooms per flat,
en suite facilities.**

15-20 minute walk to campus



YOU'LL LOVE THIS IF YOU...

want to be able to roll out of bed and into Dominos, want a peaceful existence, enjoy picturesque walks onto campus, want your own bathroom, like to be close to a supermarket



@niesimin

THE COPSE

Size: 643 rooms

Cost per week:

£163.17 - £191.31

4-12 rooms per flat, en suite facilities, Studio flats, some adapted rooms available.

10 minute walk to campus

YOU'LL LOVE THIS IF YOU...

like the finer things in life, want to starfish in a 4ft wide bed, like state of the art facilities and stylish rooms





Other Handy Stuff



@dom_bash

HUNGRY?

“First we eat, then we do everything else.”

M.F.K FISHER



SQUARE 3

Canteen

Freshly-cooked dishes from around the world.

SU Bar

Our social hub sells classic pub grub, Starbucks coffee and more.

AROUND CAMPUS

Square 5, Burrito Bus

Serving fresh Mexican dishes.

Wivenhoe House,
The Brasserie

This award-winning restaurant is part of or Edge Hotel School and serves the best of British cuisine.

Essex Business School,
Bonds Café

Serving Costa coffee, pastries, salads and sandwiches.

SQUARE 4

Buffalo Joes

Burgers, Southern Fried chicken, wraps, shakes and slushies.



JOIN US ON SOCIAL

See life through the student's eyes,
check out #MyEssex on Instagram



/uniofessex



@uniessex



@Uni_of_Essex



uniofessex

Some of the images used in this programme
are by our wonderful students.

@aarianoushka
@ajrwphotographer
@alierdenay
@carlacamilleri
@charleyclubley
@choobean
@cncsnapthemoment
@danfury17
@dlhal3108
@dom_bash
@dotshiiki
@ebbajannert

@ellajay95
@elodieberet
@emmykristinax
@franzwho
@harrylo253
@isabel.charlotte
@karopieklo
@jakethestudentt
@lucavegac
@michael_ts
@miranda_l.e.e
@miriamportfolio

@nabeeel_akhtar
@niesimin
@nikos_hasanaj
@oliviasmith12
@peachp7
@rc_amt
@scuzelove
@storaskacinas
@sugarwray
@trisha_lalala



OUR TRAIN STATION SHUTTLE SERVICE

Our shuttle service runs between Colchester Station (COL) and our campus every 15 minutes throughout the Open Day.

There's no need to book just look out for signs to our Coach Stop near our Sports Arena. The last coach will leave campus at 4pm.

First aid and emergencies

If you require first aid at any point during the day, please go to the Sports Arena or the security office on Square 3, where trained first-aiders are on hand to assist you. In case of a serious emergency, alert a member of staff, Student Ambassador or ring 01206 872222. Please do not call the emergency services as the University has agreed arrangements with them.

THIS IS US

(ACCORDING TO THE STATISTICS)

UNIVERSITY OF THE YEAR THE AWARDS 2018

TOP 15 IN ENGLAND FOR STUDENT SATISFACTION

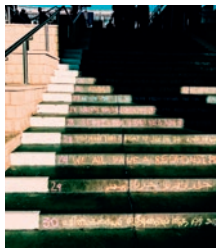
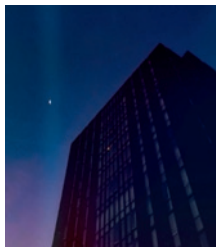
NSS 2018, overall student satisfaction, mainstream universities (non-specialist higher education institutions with a survey population of at least 500)

TOP 25 FOR RESEARCH QUALITY

(The Times and The Sunday Times Good University Guide 2018)

WE ARE GOLD RATED IN THE 2017 TEACHING EXCELLENCE FRAMEWORK.

ALL STUDENTS ARE GUARANTEED UNIVERSITY ACCOMMODATION FOR THEIR FIRST YEAR AT ESSEX



www.essex.ac.uk



University of Essex