



University of Essex

THE AWARDS
2018

Winner
University of the Year

SOUTHEND OPEN DAY



WE ARE ESSEX. ARE YOU?

WINNER
UNIVERSITY
OF THE YEAR

THE AWARDS
2018

We are over
15,000
STUDENTS

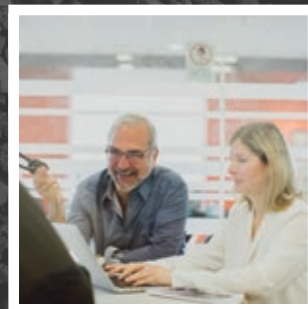
made up of over
140 different
nationalities

We are
25th
in the UK for
research quality

(Times Good University
Guide 2019)

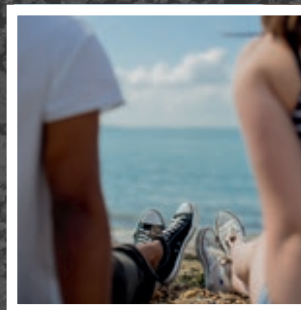


Our teaching is
GOLD
rated
(TEF 2017)

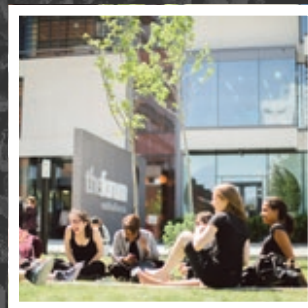


We're
TOP 15
in England for
student satisfaction

NSS 2019*



Our students are
members of a
global network –
FOR LIFE



*Non-specialist higher education institutions
with a survey population of at least 500



TO-DO LIST

We like our Open Days to give you the full experience of life as an Essex student so they're always packed full of things to see and do. Use our handy to-do list to make sure you don't miss a thing.

KICK YOUR DAY OFF WITH OUR WELCOME TALK

Want a 30-minute round up of what to expect from the day?

Join us at **10.00am** in **The Forum Lecture Theatre** for our Welcome Talk.

- ☐ Check in
- ☐ Pinch a refillable Essex water bottle
- ☐ Enjoy a cuppa
- ☐ Chat to academics
- ☐ Speak to Student Services
- ☐ Check out our accommodation
- ☐ Take a guided tour of our campus
- ☐ Get involved with the activities in Elmer Square

SUBJECT TALKS AND TASTERS

COME AND MEET OUR ACADEMICS

Oral Health academics will be in The Forum 0.35 and 0.34. Nursing, Social Work, Essex Business School and East 15 academics will be in the Gateway Building. It's a chance to grab some refreshments too!

ESSEX BUSINESS SCHOOL

| Description | Times | Location |
|---|---------------------------------|-------------|
| Tour of Facilities | Ad hoc between 10.30am – 3.00pm | Floor 3, GB |
| Business as Usual? Not at Essex: Welcome Talk and Student Stories | 12.00 – 12.30pm | Floor 3, GB |
| Marketing: Creating Customer Value and Engagement | 12.30 – 1.00pm | Floor 3, GB |

EAST 15 ACTING SCHOOL

| Description | Times | Location |
|---|-------------------|-------------|
| Welcome to East15 Acting School and Q&A | 10.45am – 12.15pm | Floor 5, GB |

SCHOOL OF HEALTH AND SOCIAL CARE

ORAL HEALTH SCIENCE

| Description | Times | Location |
|---|---|---------------------|
| Welcome Talk | 10.40 – 11.20am or 12.40 – 1.20pm | TF.0.11 |
| Tour of Oral Health Facilities (30 minutes) | Tours leave at 11.30am, 12.00pm, 12.30pm, 1.00pm, 1.30pm and 2.45pm | TF.0.35 and TF.0.34 |


NURSING

| Description | Times | Location |
|---|-----------------|----------|
| Welcome Talk | 12.15 – 12.45pm | GB.2.41 |
| Adult Nursing Escape Room - The Mystery Infection | 12.45 – 1.15pm | GB.2.41 |
| Mental Health Nursing – Dementia from the Inside | 12.45 – 1.15pm | GB.2.33 |

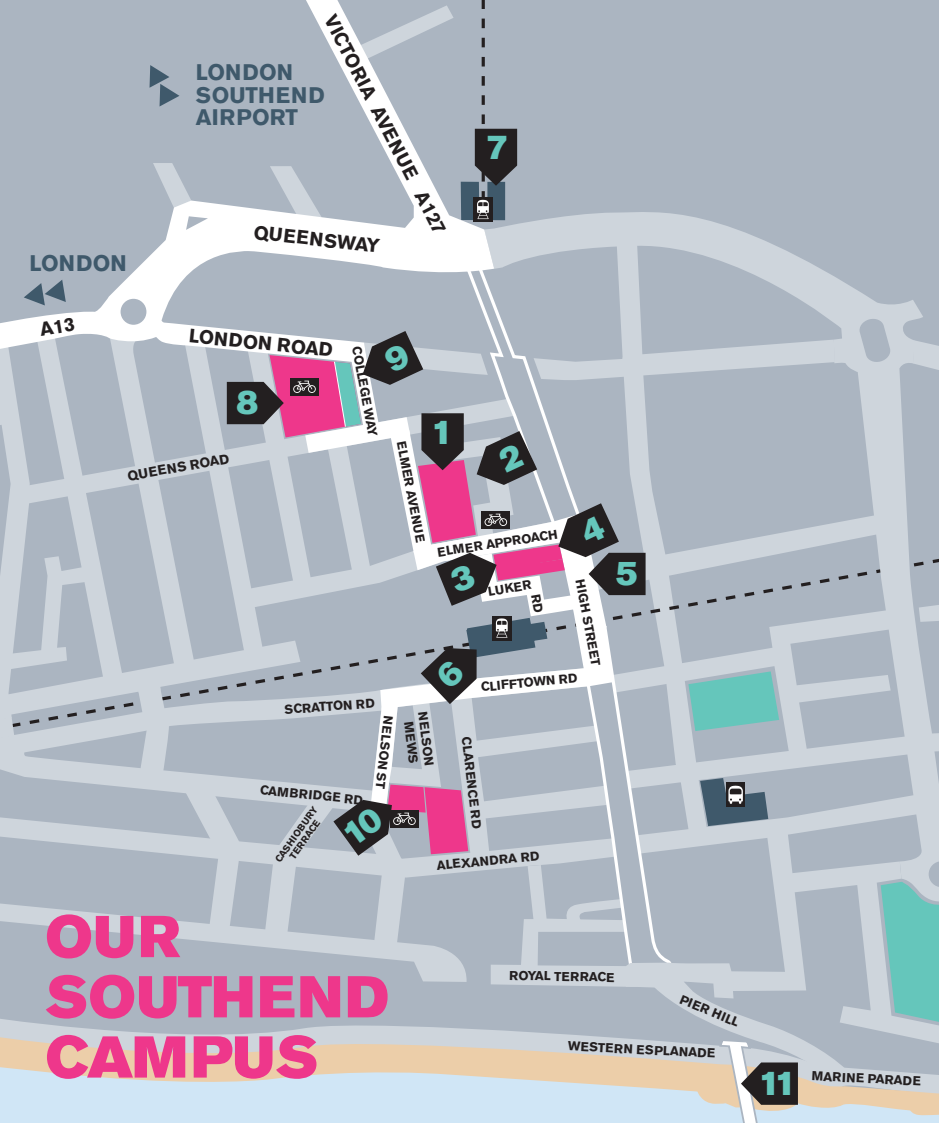
SOCIAL WORK

| Description | Times | Location |
|----------------------------------|----------------|----------|
| Welcome Talk | 12.45 – 1.15pm | GB.2.42 |
| Escape Room - The House of Janet | 1.15 – 1.45pm | GB.2.42 |

Building Key TF – The Forum GB – Gateway Building



OUR HANDY OPEN DAY MAP



OUR SOUTHEND CAMPUS



- 1 The Forum
- 2 Elmer Square
- 3 The Gateway Building
- 4 Students' Union Lounge
- 5 Southend High Street
- 6 Southend Central Station
- 7 Southend Victoria Station
- 8 University Square Accommodation
- 9 Recommended public car park
- 10 Clifftown Theatre
- 11 Southend Pier

Key

- University of Essex
- Public transport
- Other public car parks





**OUR STUDENTS' UNION
WILL BE BASED IN
THE SU LOUNGE.
POP IN, SAY HI,
GRAB A CUPPA,
SETTLE IN FOR A CHAT.
FIND OUT ABOUT
BECOMING PART OF
THE FAMILY AND WHAT
YOU CAN GET INVOLVED
IN AS AN ESSEX
STUDENT**



THE FORUM

This contemporary building is the hub of the University, with a library, teaching spaces and 24-hour learning hub. Here's what you'll find in The Forum for the Open Day:

- Our **Welcome Talk** is at 10.00am
- Chat to our **Student Services** from 9.30am - 3.30pm in the Welcome Café
- Grab yourself a drink
- From 10.00am our **Accommodation and Campus Tours** will depart from Elmer Square (the area right outside The Forum)
- You'll find the **Oral Health Science academic stand and refreshments** in TF.0.34/35



THE GATEWAY BUILDING

This is home to our academic departments and provides state-of-the-art teaching and study facilities. There are dedicated drama and dance studios, along with Nursing and Oral Health skills labs. You can also find a multi-faith chaplaincy on the second floor. Lots of our **academic stands and refreshments** will be in here for the Open Day, here's where to find them:

- **Nursing and Social Work, Floor 2**
- **Essex Business School, Floor 3**
- **East 15, Floor 5**



WELCOME HOME

DON'T MISS OUR ACCOMMODATION AND CAMPUS TOURS!

Our student led tours will run every 20 minutes from 10.00am departing from Elmer Square, that's right outside The Forum.

FIND OUT MORE ABOUT YOUR NEW HOME

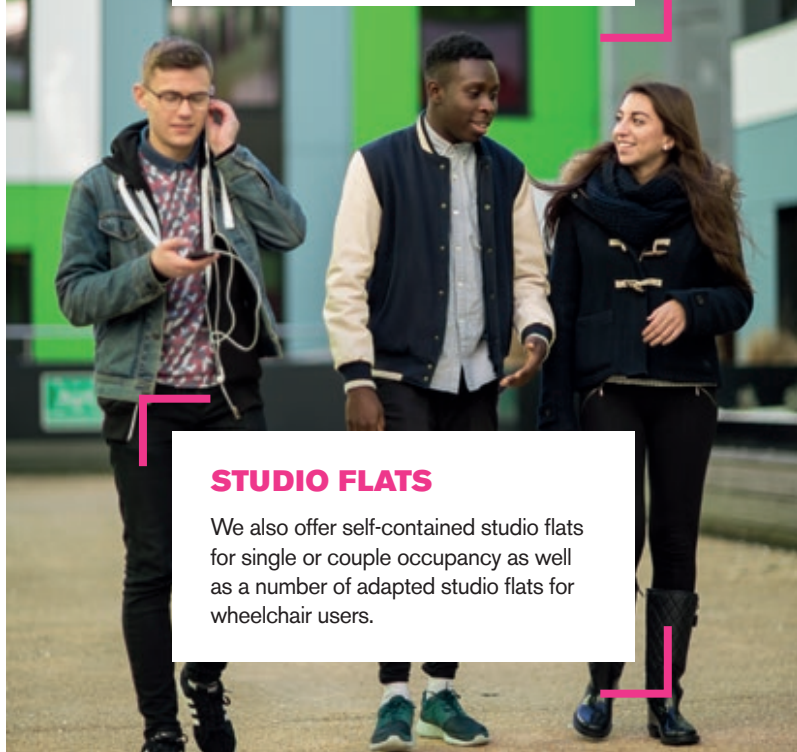


Each flat features a shared kitchen and large communal living space with internet access and wide screen televisions.

Your room (obviously the most important part) comes with en suite toilet and shower facilities, no need to plan out a shower rota with your flatmates!



Our **University Square accommodation** is ideally located **just off the high street** and a **two-minute walk to campus**, so no excuses for missing those 9am lectures. There are **seven houses** around a central courtyard, each contains **flats for eight to ten students**.



STUDIO FLATS

We also offer self-contained studio flats for single or couple occupancy as well as a number of adapted studio flats for wheelchair users.



WE ARE ESSEX

Zaakia-Sultana Durrani

FdSc Oral Health Science

When I was 9 I had a bumper car accident and I smashed my lower incisors. I went to a university hospital for treatment and that's when I met a hygienist. The way she was focussing on my oral health, and the way she changed it from a negative experience to such a positive experience planted a seed for my future career. When I see that a patient has taken advice and it's changed their life, that makes me so happy, that's what I wanted to do in the first place.



Professor Phil Cannell

Professor of Oral Health Science

We've had a lot of firsts in Oral Health Sciences at Essex; we launched the first ever Masters programme for dental hygienists and therapists in the UK, for example. So the School is a big source of pride for me, because of how innovative and pioneering it is.



Dr Annemarie Brown

Lecturer for Adult Nursing

I was 23 when I started nursing. It's a career with lots of ups and downs, it's stressful and challenging, but I still think it's the best job ever. I would never do anything else. I feel like I've gone full-circle really. I was a student nurse, then a trained nurse, then a consultant nurse, and now I'm teaching. I'm passing my knowledge to the next generation, so to me, it's really fulfilling.



Ifra Qureshi

BSc Marketing

At Southend, being a commuting student, at first it was really tough because it was hard to communicate with other students; it was hard to find friends and it was hard to get to know people. Then I found out what the Students' Union was and I was like 'this is my place'. So I started helping out doing different activities and events, generally just trying to get together with people, trying my best to get to know people - that changed my life.



Niyi Bammodu

BA Acting & Community Theatre

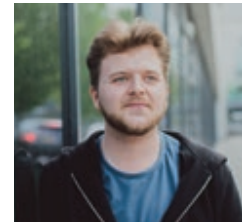
I want to get a lot of things out of my acting/performance career. I want to go to schools and do Theatre in Education. I recently wrote a show about knife crime, because it's so rampant in today's society. I'm always 'prevention over cure' so I'd love to do a show about a boy who either falls into it or he's used to it. I think there's something special about creating a world to show young people and saying "this is where your life could potentially go". I'd like to think it affects them differently.



Josh Duckmanton

BA World Performance

My goal would be to write and direct theatre. I've got an original piece of theatre at the Camden Fringe Festival coming up this summer, so that's hopefully the start of a career in writing. It's about the loss of a really close friend of mine and my grandma. Theatre, theatre-making and writing has always been therapeutic for me. You should always use theatre to help situations, to counsel, to persuade, to provoke, to get people out there to vote, to change the world. My advice to someone looking to go into this would be to enjoy how scary it is because it makes you realise that you love it.



HOW MUCH DO YOU KNOW ABOUT SOUTHEND?



- 1 We're home to the world's longest pleasure pier, stretching over a mile!
- 2 We've got our own airport
Books long weekend in Dubrovnik
- 3 There are 7 miles of beautiful seafront to enjoy
- 4 Nearby Hadleigh Castle dates back to 1215, it's a great day out exploring the ruins!
- 5 Southend features in the James Bond film, Goldfinger



WE HOPE YOU ENJOYED YOUR VISIT!

If you have any questions we're always happy to help. Your feedback is super important to us, so if you have a spare 5 minutes we'd really appreciate if you could complete our survey which will be emailed to you shortly after your visit.



/uniofessex



@uniessex



@Uni_of_Essex



uniofessex

www.essex.ac.uk