



IMPATIENT FOR CHANGE?

**ESSEX OPEN DAY
17 SEPTEMBER 2022**



University of Essex

CONTENTS

Open Day overview 2

Plan your day 4

Open Day map 5

Main Open Day Venue – Essex Sport Arena 6

Talks and tasters 8

General talks

A–Z subject talks and tasters

Campus and accommodation tours 15

Experience student life at Essex 23

Square activities

Colchester and surrounding areas

Contact information 27

OPEN DAY OVERVIEW

Opening times

Our Open Day runs from 9am – 4pm. Tours and talks will start from 9.30am.

Planning your day

There are lots of things to see and do at our Open Day, so having a rough plan for your visit is essential. This programme will provide a full rundown of times, locations and activities so take a moment to read through the information and then use the planner to make a note of the most important things you want to cover on the day. We've included a handy checklist on [page 4](#) to help get you started.

Arrival and check-in

The Open Day will take place at our Colchester Campus. The address is:

University of Essex
Wivenhoe Park
Colchester
CO4 3SQ

What3words: **magic.violin.frame**

There will be yellow AA road signs to help guide you to our campus from the main travel routes. These will guide you to Boundary Road. Once there, take the second right which will guide you to the free Open Day parking area where a Traffic Officer will be on hand to direct you. Once you've parked, follow 'Open Day Check-in' signs which will guide you to the Essex Sport Arena; the main venue for the Open Day.

Once you've checked in, we'll give you a lanyard which includes a QR code to this digital programme, a map and a planner you can write on.

Subject talks and tasters

Throughout the day we'll be hosting talks and tasters so you can learn more about the subject you're interested in and get a feel for studying at Essex. Take a look at [pages 9–14](#) for the list of times and locations! Most of our talks and tasters are repeated in the afternoon so you have the flexibility to join whichever session suits you better.

General talks

We run a range of talks covering topics such as accommodation, student wellbeing and an information session for parents and guardians. Like our subject tasters, we run repeated sessions for most of our talks so you have the flexibility to create your own plan for the day. No need to book, just turn up!

Accessibility

Our Open Day can be very busy, which we appreciate can be overwhelming for some of our visitors. We therefore run an early check-in from 8am – 9am to allow for a calmer start to the event. To book an early check-in spot and find out more, please email opendays@essex.ac.uk

We will also have quiet spaces in our Lakeview Room and Essex Sport Arena if you feel you need a break from the crowds. Our Lakeview Room is located on the top floor of our Silberrad Student Centre and will also be live-streaming the general talks which take place in the ICLH Auditorium throughout the day. Please check the Open Day map on [page 5](#) to find where these spaces are located, or speak to a member of staff on the day.

The University is set across various levels so please look out for 'step-free' signage on campus or speak to a member of staff or Student Ambassador on the day who will be able to help you.

Toilet and hand-washing facilities can be found in all main venues. Gender neutral toilets can be found throughout the campus, but the most centrally located can be found in our Students' Union on Square 3.

Support on the day

Staff and Student Ambassadors will be based in all main areas to support you so please ask us anything.

If you require first-aid, please alert a member of staff or Student Ambassador. Alternatively, please head to the Information Centre on Square 3 where a member of our Security Team will be able to help you.

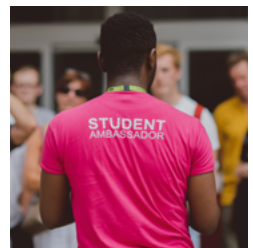
In the event of a serious incident, please call the University's emergency number where we have a direct line to emergency services: **01206 872222**.

Accommodation tours

We run 'open accommodation' on our Open Days to give you the opportunity to view our range of room options at your own pace. Head to our Tour and Accommodation Zone outside the Silberrad Student Centre to pick up a map which will direct you to where you need to go and find out more about each accommodation type.

Campus tours

Why not take a look around our Colchester Campus guided by one of our lovely Student Ambassadors? Tours leave regularly from the Tour and Accommodation Zone outside the Silberrad Student Centre from 9am – 3.30pm and last around 30 minutes.



PLAN YOUR DAY

Not sure where to start? Here's a handy checklist to help you make the most of your day.

■ **Check-in at our Essex Sport Arena and grab some freebies!**

■ **Chat to our Student Services**
Sport Arena, 9am – 4pm.

■ **Meet your Department**
Sport Arena, 9am – 4pm.

■ **Grab a bite to eat**
All of our outlets and food stalls are listed on [page 25](#).

■ **Discover your subject at a taster session**
For timings and locations see [pages 9–14](#).

■ **Listen to our general talks**
Full listings are on [page 9](#).

■ **View our accommodation**
Full details are on [pages 15–22](#).

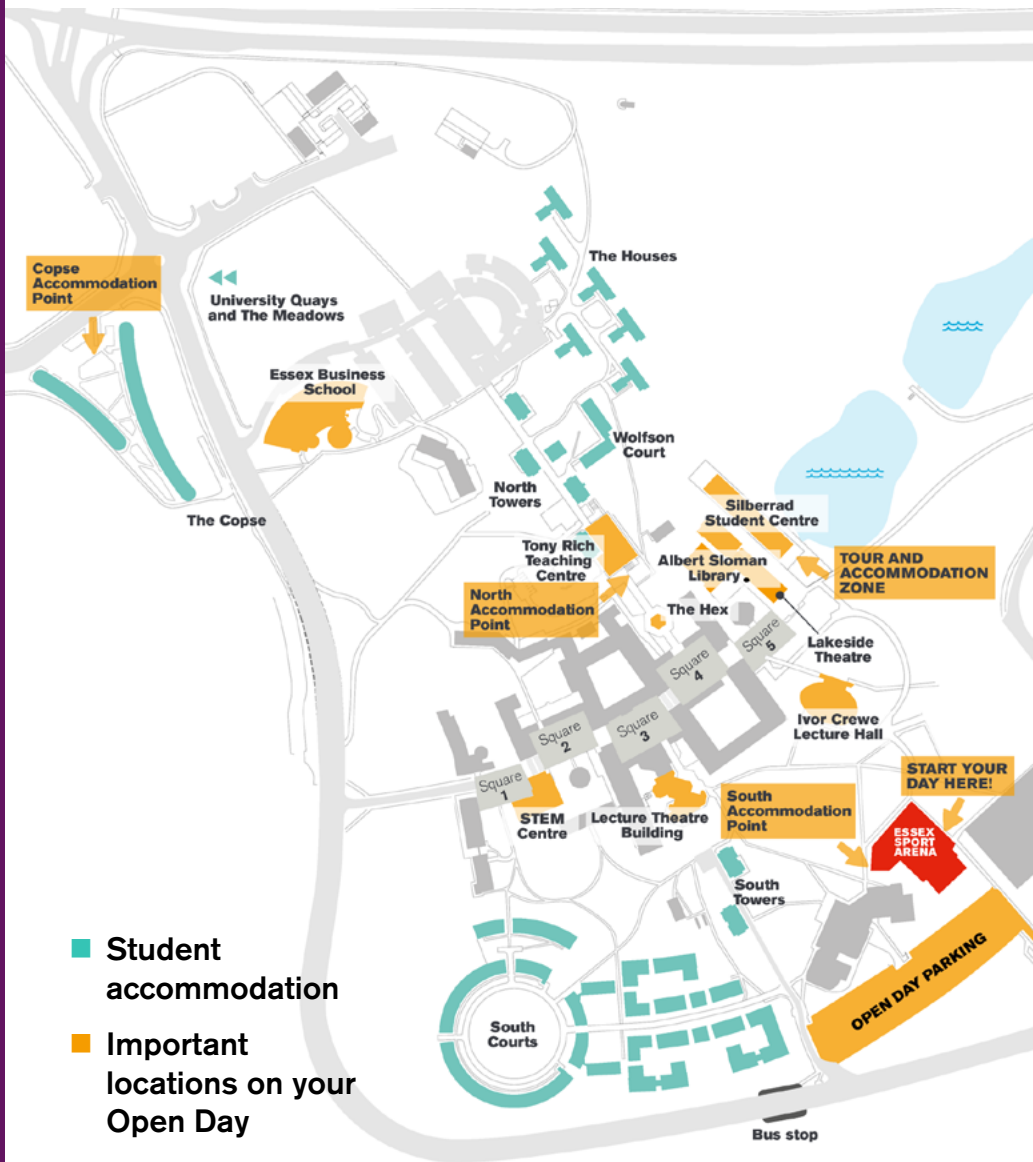
■ **Tour our famous Albert Sloman Library**
Square 5, from 9.30am.

■ **Tour our beautiful campus with an Essex student**
Tours will leave regularly from the Tour and Accommodation Zone, located outside the Silberrad Student Centre, and last around 30 minutes.

■ **Have an ice-cream on us!**
We'll give you a free voucher when your check-in at our Sport Arena. Head to Square 5 to redeem your voucher at our ice-cream van.

■ **Meet our Sports Clubs and Societies**
Find out more about Judo, LGBTQ+, Archery and more!
Square 3, from 9.30am.

Open Day map



- Student accommodation
- Important locations on your Open Day

Toilets and hand-washing facilities are located in all main venues.

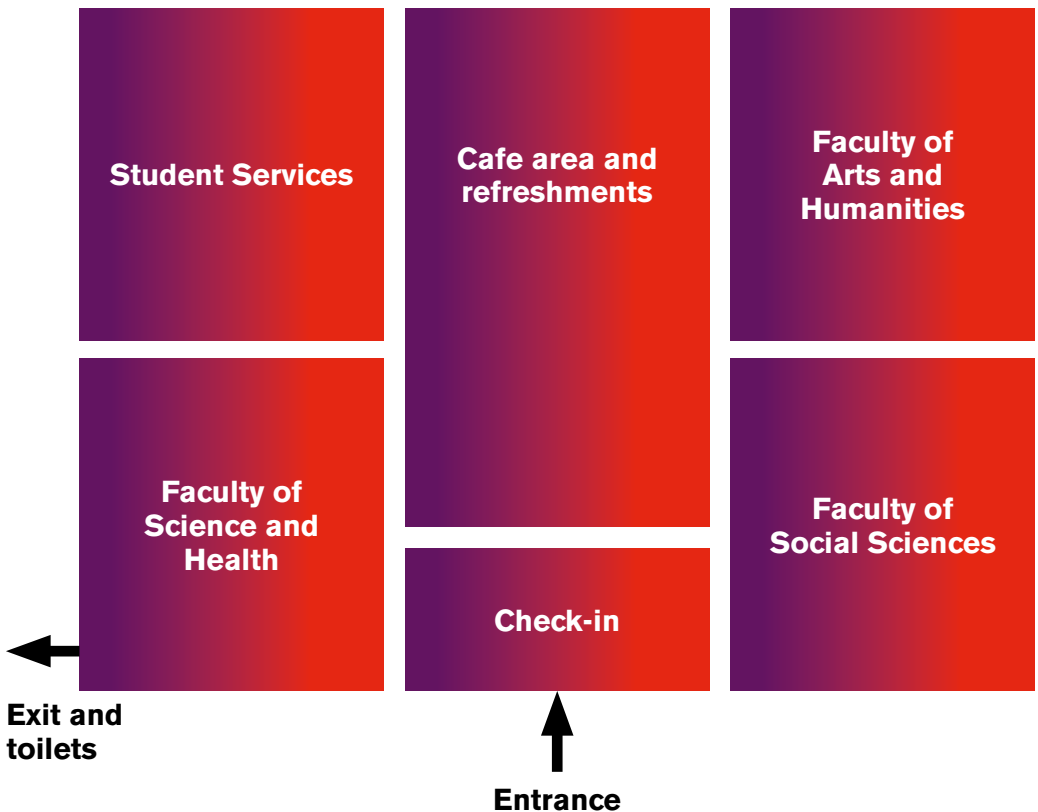
ESSEX SPORT ARENA

This is our main venue for the Open Day so head here first to check-in. Our academic departments will be based on subject stands in the Arena from 9am – 4pm so please feel free to chat to them and find out more about your course.

Each area is arranged by Faculty, so please use the list on the next page to help you find your department. We also have a Student Services area where you can find out about our accommodation, student support and wellbeing, studying abroad and much more!

In the centre of the Arena we'll have a large café area providing free tea, coffee, cold drinks and snacks throughout the Open Day so please help yourself!

There will be Student Ambassadors based in the Arena to help direct you and answer any questions you may have.



STUDENT SERVICES

- Essex Sport
- Essex Abroad
- Students' Union
- Student Finance
- Multi-Faith Centre
- Accommodation Essex
- Postgraduate Admissions
- Undergraduate Admissions
- Student Support and Wellbeing
- Student Skills Zone: Online skills courses, Careers Services, Apprenticeships, Preparation Programmes and Languages for All

FACULTY OF SCIENCE AND HEALTH

- School of Life Sciences
- Department of Psychology
- School of Health and Social Care
- Department of Mathematical Sciences
- School of Sport, Rehabilitation and Exercise Sciences
- School of Computer Science and Electronic Engineering

FACULTY OF ARTS AND HUMANITIES

- Essex Law School
- Essex Pathways
- Edge Hotel School
- Department of History
- Department of Philosophy and Art History
- Department of Literature, Film, and Theatre Studies
- Interdisciplinary Studies Centre (US Studies, EU Studies, Global Studies, Liberal Arts, Social Change)

FACULTY OF SOCIAL SCIENCES

- Essex Business School
- Department of Sociology
- Department of Economics
- Department of Government
- Department of Languages and Linguistics
- Department of Psychosocial and Psychoanalytic Studies



Talks and tasters

General talks

Talks will take place in our Ivor Crewe Lecture Hall (ICLH) and will last approximately 30 minutes. If you find large spaces overwhelming, the talks which take place in the ICLH Auditorium will also be live streamed from our Lakeview Room; a 'quiet space' for the Open Day which can be found on the top floor of the Silberrad Student Centre.

TALK	TIME
IVOR CREWE LECTURE HALL AUDITORIUM	
Welcome to the University of Essex	10am and 12.30pm (repeated)
Student Accommodation	10.30am and 1pm (repeated)
Applying to Essex for Undergraduates	11.15am and 2.30pm (repeated)
Student Finance for Undergraduates	12pm and 3.15pm (repeated)
Student Support and Wellbeing	1.45pm
IVOR CREWE LECTURE HALL SEMINAR ROOM	
Applying to Essex for Postgraduates	10.45am
Meet our Students' Union	11.30am
Funding for Postgraduate Studies	12.15pm
Information for Parents and Guardians	1pm
Student Life at Essex	1.45pm
Skills for Success: achieving your best at university	2.30pm
Student Development: supporting you to get a job after university	3.15pm



A-Z SUBJECT TALKS

Key for locations

EBS Essex Business School

LTB Lecture Theatre Building

TC Tony Rich Teaching Centre

STEM Centre (Square 1)

Lakeside Theatre (Square 5)

Faculty of Social Sciences

TALK	TIME	LOCATION
ESSEX BUSINESS SCHOOL		
Welcome to Essex Business School	11am – 11.30am and 12.45pm – 1.15pm	EBS 2.2
Accounting, Finance and Banking	11.45am – 12.15pm and 1.15pm – 1.45pm	EBS 1.1
Management and Marketing	11.45am – 12.15pm and 1.15pm – 1.45pm	EBS 2.1
DEPARTMENT OF LANGUAGE AND LINGUISTICS		
English Language and Linguistics	11.45am – 12.45pm and 2.45pm – 3.45pm	TC 2.14 - 15
Modern Languages	10.45am – 11.45am and 1.30pm – 2.30pm	TC 2.12 - 13
DEPARTMENT OF ECONOMICS		
Economics	10.45am – 11.45am and 1.30pm – 2.30pm	LTB 9

Faculty of Social Sciences

TALK	TIME	LOCATION
DEPARTMENT OF PSYCHOSOCIAL AND PSYCHOANALYTIC STUDIES		
Welcome to the Department, followed by a subject talk:	10.45am – 11.15am and 1.30pm – 2.00pm	TC.1.11
Childhood Studies	11.15am – 11.45am and 2pm – 2.30pm	TC.1.11
Psychosocial and Psychoanalytic Studies	11.15am – 11.45am and 2pm – 2.30pm	TC.1.9
Psychodynamic Practice	11.15am – 11.45am and 2pm – 2.30pm	TC.1.8
DEPARTMENT OF SOCIOLOGY		
Sociology and Criminology Overview	10.45am – 11.15am and 1.30pm – 2pm	LTB 7
Criminology Taster	11.15am – 11.45am	LTB 7
Sociology, and Social Anthropology Taster	2pm – 2.30pm	LTB 7
DEPARTMENT OF GOVERNMENT		
Politics and International Relations	10.45am – 11.45am and 1.30pm – 2.30pm	LTB 5

Faculty of Science and Health

TALK	TIME	LOCATION
SCHOOL OF LIFE SCIENCES		
Biological Sciences Ecology and Environmental Biology Global Sustainability Marine Biology	Subject talk: 10.30am – 11.30am Demonstration: 11.30am – 12.30pm and 12.30pm – 1.30pm	STEM 3.1 STEM Lab 2.1
Biochemistry Biomedical Sciences Genetics Human Biology	Subject talk: 11.30am – 12.30pm Demonstration: 12.30pm – 1.30pm and 1.30pm – 2.30pm	STEM 3.1 STEM Lab 2.1
SCHOOL OF COMPUTER SCIENCE AND ELECTRONIC ENGINEERING		
Computer Science and Electronic Engineering	10.45am – 11.45am and 1.30pm – 2.30pm	LTB 3
DEPARTMENT OF MATHEMATICAL SCIENCES		
Welcome to the Department, followed by a subject taster:	11.30am – 12.00pm and 2.15pm – 2.45pm	TC 2.6 - 7
Actuarial Sciences	12.00pm – 12.30pm and 2.45pm – 3.15pm	TC 2.8 - 9
Data Science	12.00pm – 12.30pm and 2.45pm – 3.15pm	TC 2.12 - 13
Mathematical Sciences	12.00pm – 12.30pm and 2.45pm – 3.15pm	TC 2.6 - 7
SCHOOL OF SPORT, REHABILITATION AND EXERCISE SCIENCES		
Physiotherapy	1.15pm – 2.15pm	LTB 3
Sport and Exercise Science, and Sports Performance and Coaching	10.45am – 11.45am and 1.30pm – 2.30pm	LTB 2
Sports Therapy	12pm – 1pm	LTB 7

These sessions will include a short talk followed by a tour of the facilities.

Faculty of Science and Health

TALK	TIME	LOCATION
DEPARTMENT OF PSYCHOLOGY		
Psychology	10.45am – 11.45am and 1.15pm – 2.15pm	LTB 6
SCHOOL OF HEALTH AND SOCIAL CARE		
Adult and Mental Health Nursing	10.45am – 11.45am and 1.45pm – 2.45pm	TC 2.14 - 15
Occupational Therapy	10.45am – 11.45am and 1.45pm – 2.45pm	TC 1.12
Oral Health Sciences	10.30am – 11.30am	TC 1.8
Social Work	10.30am – 11.30am and 2.30pm – 3.30pm	TC 1.13
Speech and Language Therapy	10.30am – 11.30am and 1.30pm – 2.30pm	TC 2.6 - 7

All Health and Social Care sessions will consist of a 30 minute subject taster followed by a 30 minute tour of the facilities.

Faculty of Arts and Humanities

TALK	TIME	LOCATION
EDGE HOTEL SCHOOL		
Edge Hotel School	10.45am – 11.45am and 1.30pm – 2.30pm	LTB 4
ESSEX LAW SCHOOL		
Law and Human Rights	10.45am – 11.45am and 1.30pm – 2.30pm	LTB 8
DEPARTMENT OF HISTORY		
History	10.45am – 11.45am and 2pm – 3pm	LTB 1
SCHOOL OF PHILOSOPHY AND ART HISTORY		
Art History	2pm – 3pm	TC 1.16
Philosophy	12.15pm – 1.15pm	TC 1.16
INTERDISCIPLINARY STUDIES CENTRE (ISC)		
American (US) Studies European Studies Global Studies Liberal Arts Social Change	10.45am – 11.45am	TC 1.16
DEPARTMENT OF LITERATURE, FILM, AND THEATRE STUDIES		
Creative Writing	10.45am – 11.45am and 1.30pm – 2.30pm	TC 1.6
Drama	10.30am – 11.30am and 1.30pm – 2.30pm	Lakeside Theatre
Film Studies	10.45am – 11.45am	LTB 10
Journalism	12pm – 12.30pm and 2pm – 2.30pm	LTB Foyer
Literature	12pm – 1pm and 2.45pm – 3.45pm	TC 1.7
ESSEX PATHWAYS DEPARTMENT		
Essex Pathways	1.30pm – 2.30pm	TC 1.17

CAMPUS TOURS

Join one of our friendly Student Ambassadors for a guided tour of our campus!

Tours of our campus will run from the Tour and Accommodation Zone regularly throughout the day from 9am and will last approximately 30 minutes. The last tour will depart at 3.30pm.

ACCOMMODATION TOURS

We run open accommodation which allows you to see as much or as little of our accommodation as you like.

Head to our Tour and Accommodation Zone outside the Silberrad Student Centre to grab a map which will guide you to the following accommodation points. From there, one of our Student Ambassadors will take you inside.

North Accommodation Point: located by the Tony Rich Teaching Centre. Head here to view The Houses, North Towers and Wolfson Court.

South Accommodation Point: located outside the Essex Sport Arena. Head here to view South Courts and South Towers.

Copse Accommodation Point: located outside The Copse accommodation. Head here to view The Copse, The Meadows and University Quays. As this point is a 15-minute walk away, we will be using golf buggies to take you there! These will depart from the Tour and Accommodation Zone on a regular basis. The last buggy will depart at 3pm.

Our Accommodation Team will be hosting a stand in our Sport Arena so please feel free to ask them anything or grab a map to the accommodation points.

We try to have an example of each accommodation type available to view at our Open Day, however some accommodation types are fully occupied and may be unavailable to view.

If you would like to see an adapted room during the Open Day, please contact us at least 48 hours prior to your visit so we can try to arrange this for you:

opendays@essex.ac.uk

Check out our range of accommodation types on the next pages to find your perfect match!

THE TOWERS

YOU'LL LOVE THIS IF YOU...

don't mind sharing, would rather spend your money on pizza, don't have a fear of heights, like meeting lots of people, want to live in an iconic building

Size: 1,142 rooms

Cost per week:
£107.52 – £110.18

**13–16 rooms per flat,
shared showers and toilets.**

5-minute walk to campus.
Available to undergraduate and
postgraduate students.

[Click here to find out more](#)



SOUTH COURTS

YOU'LL LOVE THIS IF YOU...

want your own bathroom, like a 5-minute commute to lectures, want to be near the gym, love a good social life, want a modern feel

Size: 1,218 rooms

Cost per week:

£163.80 – £169.47

4–14 rooms per flat, en suite facilities, some adapted rooms available.

5-minute walk to campus.
Available to undergraduate students.

[Click here to find out more](#)





THE MEADOWS

YOU'LL LOVE THIS IF YOU...

need chilled vibes, fancy a little stroll to campus in the mornings, like to starfish in a 4ft wide bed, want to be closer to town and the train station

Size: 228 townhouse rooms
plus 420 flats with
en suite rooms and
self-contained apartments

Cost per week:
£160.86 – £201.74

12 rooms per townhouse.
5–7 rooms per flat.

10–15-minute walk from campus.
Available to undergraduate and postgraduate
students.

[Click here to find out more](#)



THE HOUSES

YOU'LL LOVE THIS IF YOU...

want a quieter lifestyle, like to be surrounded by meadows and nature, want a homely feel, need a bit more space

Size: 267 rooms

Cost per week:

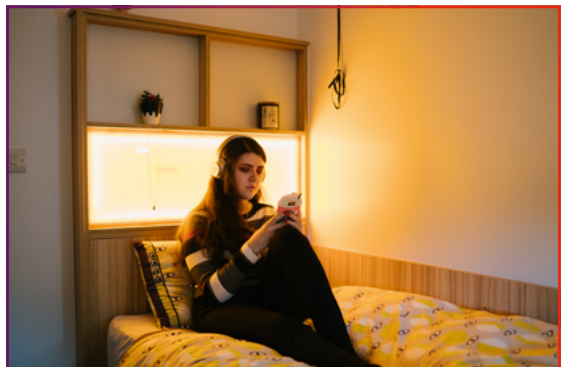
£148.68 – £161.49

**4–6 rooms per flat,
en suite facilities,
some adapted
rooms available.**

5-minute walk to campus.

Available to undergraduate students.

[Click here to find out more](#)



UNIVERSITY QUAYS

YOU'LL LOVE THIS IF YOU...

want to be able to roll out of bed and into Dominos, want a peaceful existence, enjoy picturesque walks onto campus, want your own bathroom, like to be close to a supermarket

Size: 766 rooms

Cost per week from:

£153.79 – £219.73

**4–8 rooms per flat,
en suite facilities,
self-contained apartments.**

15–20-minute walk to campus.

Available to undergraduate and postgraduate students.

[Click here to find out more](#)





THE COPSE

YOU'LL LOVE THIS IF YOU...

like the finer things in life, want to spread out in a starfish in a 4ft wide bed, like state of the art facilities and stylish rooms

Size: 643 rooms

Cost per week:

£173.39 – £203.28

4–12 rooms per flat, en suite facilities, self-contained studio flats, some adapted rooms available.

10-minute walk to campus.
Available to undergraduate and postgraduate students.

[Click here to find out more](#)



THE PASTURES

COMING SOON!

For Autumn 2023 we are launching The Pastures. Over 1,200 brand new rooms for you to call home

Size: 1,200 rooms

285 standard rooms (single rooms sharing a bathroom – two per bathroom)

919 ensuite rooms

58 studios



Experience student life at Essex



SQUARES ACTIVITIES

The University is set over five 'Squares' – hence our logo! On the Open Day, we'll be taking over Squares 3 to 5 and packing them full of activities to help give you a taste of the student life experience at Essex. Here's a rundown of what we have in store.

Square 3 – Meet our Students' Union

At Essex we're not like other SUs and we don't want to be. Our Students' Union form a group of over 16,000 students on a mission, an adventure to become the world's most student-centred organisation.

We'll be showcasing some of our sports clubs and societies to give you a taste of the range of activities you can get involved in at Essex outside of your studies, so head down and get involved!

- **Women in STEM:** If you're passionate about STEM, head to their stand to meet like-minded students, discover more about their social and networking events and take part in some games!
- **Archery:** Test your aim by taking part in soft Archery!
- **Dodgeball:** Try your hand at a new sport and see if you have the skills to eliminate a member of our Dodgeball team!
- **Judo:** Showcasing live demonstrations throughout the Open Day.
- **LGBTQ+:** Chat about topics related to the LGBTQ+ community at Essex and find out about the social activities they run. Oh, and there's free cake!
- **Romanian Society:** Find out how they promote Romanian culture through socials, trips and other events. They will also be performing traditional dances throughout the day so don't miss them!
- **Visit our SU Info Stand:** And find out the wide range of clubs and societies we offer and how you can get involved.

Essex Students' Union will also be based in our Essex Sport Arena from 9am to give you the full-rundown of who we are and what we do!

Square 4 – Food Court

Feeling peckish?

Head to our Food Court and take a load off while listening to our live local artists. We have a range of food options to suit all tastebuds, from our catering outlets on campus to our Food Court on Square 4 with street food stalls serving a range of international cuisines: Paella, Buddha Bowls, Noodles, and a BBQ to top it off!



Square 5 – Impatient to get stuck in?

Square 5 is choc-full of things to see, try, and taste. Here's a rundown of what to expect on the day:

- **Sweet tooth?** Grab a free bag of sweets from our Sweet Bar!
- **Kick back in our Bar** with an Essex-themed punch and listen to live local artists play your Open Day soundtrack.
- **Paint with Tom** Join our brilliant artist and Essex graduate outside our Art Exchange, develop your painting skills and take a piece of Essex home with you.
- **Tour our Albert Sloman Library** Our Library Services Team will be on hand to provide information and tours of our library throughout the day.
- **Meet our Security Team** and find out more about our campus and how we keep our student community safe.

COLCHESTER AND SURROUNDING AREAS

Colchester

Colchester was awarded city status as part of Her Majesty The Queen's Platinum Jubilee celebrations. The historic city is England's oldest recorded development, and even has a castle!

If you love going to the theatre you'll be in luck in Colchester. We have both the Mercury and Headgate Theatre, as well as our own Lakeside Theatre on campus.

Castle Park is in the city centre and runs a wide variety of music concerts and festivals throughout the year, from OktoberFest, open-air Shakespeare productions to the Ibiza Orchestra. Or head to Colchester Arts Centre which runs a busy programme of comedy, music and weird and wonderful new plays, all from a beautiful, converted church. Colchester has lots of pubs, bars and restaurants, from all your favourite chains to independent gems.

If you're looking for a free day out, then Firstsite, a contemporary art gallery, produces free exhibitions all year-round. Or if you fancy seeing a film with your flatmates, you can head to Curzon, the Odeon Cinema, or our on-campus cinema – all offering student discounts! Want something more immersive? There's escape rooms in the city centre themed from the wizarding world to the seven seas.

A short bus ride away is Colchester Zoo, home to around 180 species and set in 60 acres of parkland and lakes, it's not one to be missed. Looking for a way to unwind? Colchester Leisure World and Aqua Springs Spa are a short walk from the city centre, and both offer student discounts.

Wivenhoe

Wivenhoe is the small, riverside town next door to the University. It's popular with students and creatives and is jam-packed with independent businesses and eateries. The Wivenhoe Trail is a 25-minute walk to the waterfront from Colchester Campus through the countryside.

Dedham Vale

Dedham is set in Constable Country, which inspired many famous painters. It is an Area of Natural Beauty, with walking trails, and is around eight miles from Colchester. In Dedham, boat hire is a popular activity with visitors and you can go rowing on the River Stour whilst watching the cows on the banks.

On the coast

Mersea Island is a hidden gem, around ten miles away from campus. It covers seven square miles, with a glowing reputation for beautiful scenery and historic charm. If you're more of a thrill seeker, you can also take part in water sports from Stand Up Paddleboarding (SUP), Kayaking, Windsurfing and Sailing.

Clacton, Walton, Frinton and Holland-on-Sea are all beachfront towns within easy access of Colchester. Clacton is the closest approximately 15 miles away. All of the beaches are on same coastline next to each other, and you can even walk between them! Clacton and Walton offer busy piers with rides and attractions.



WHY WE'RE GREAT

- We are the number 1 university in the UK for Knowledge Transfer Partnerships (KTPs), the flagship Innovate UK programme.
- Top 25 in UK for research quality (The Times and Sunday Times Good University Guide 2022).
- Top 40 in the UK in the Complete University Guide 2023.
- Our determination to make a difference in society means we're in the global top 100 of the Times Higher Education Impact Rankings which ranked more than 1,400 universities around the world.

CONTACT INFORMATION

If you have any questions ahead of your Open Day, please email opendays@essex.ac.uk. If you have any queries on the day, please find a member of staff or Student Ambassador who will be able to help you.

WE HOPE YOU HAVE A BRILLIANT OPEN DAY!