



UMPHAFA

Private Nature Reserve





- Privately owned zoo
- Action for the Wild 1993
- Free the Bears, Orangutan Foundation, Elephant Orphanage Project, Wildlife Vets International



UMPHAFA

Private Nature Reserve

The Reserve

- 6,000ha of cattle farm land
- Exclusively for conservation and education
- Fencing began in 2005

Issues

- Hunting
- Livestock competition
- Overgrazing
- Erosion
- Alien plants
- Chemicals/poisoning



UMPHAFA

Private Nature Reserve



Conservation Aim

"To ensure the conservation of native wildlife by protecting the land, managing it sustainably, and recreating the former species assemblage"

Research Aim

"To undertake research on the flora and fauna of UmPhafa in order to provide credible data beneficial to the future management of South African Game Reserves"



Education Aim

"To work together with the local community for the benefit of both wildlife and people"







UMPHAFa

Private Nature Reserve





UMPHAFA

Private Nature Reserve





UMPHAFA

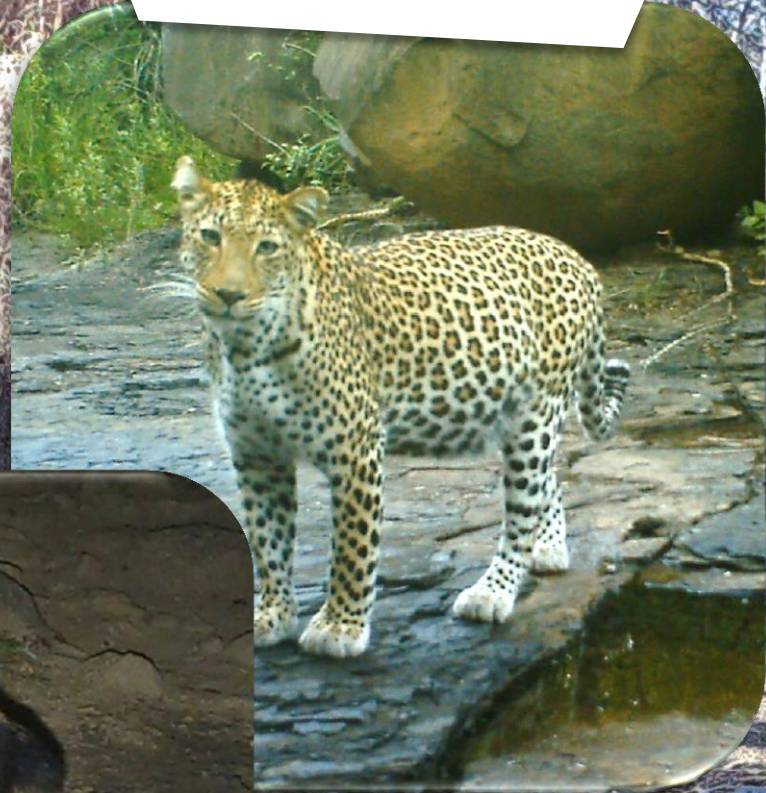
Private Nature Reserve



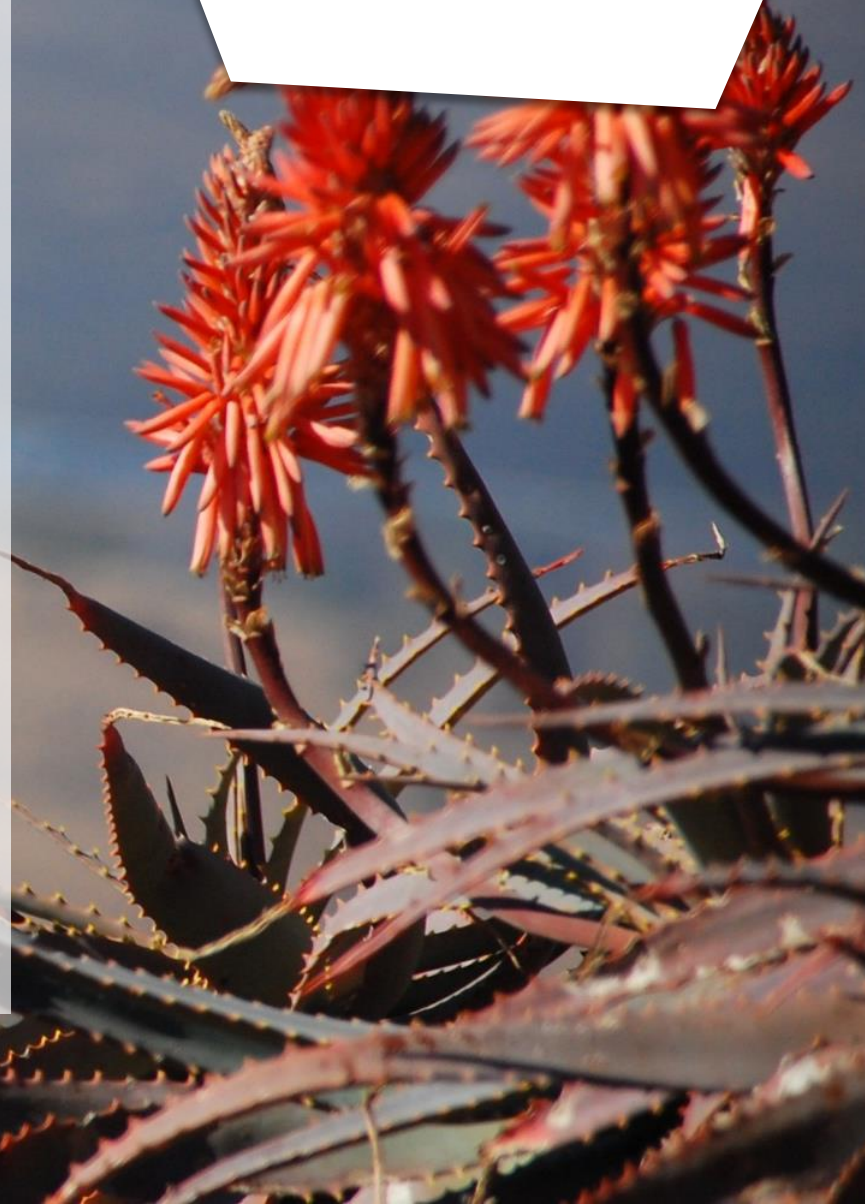


UMPHAFA

Private Nature Reserve



- Giraffe
- White Rhino
- Zebra
- Kudu
- Aardvark
- Leopard
- Eland
- Honey badger
- Rock Python
- Ostrich
- Genet
- Monitor Lizard







UMPHAFA

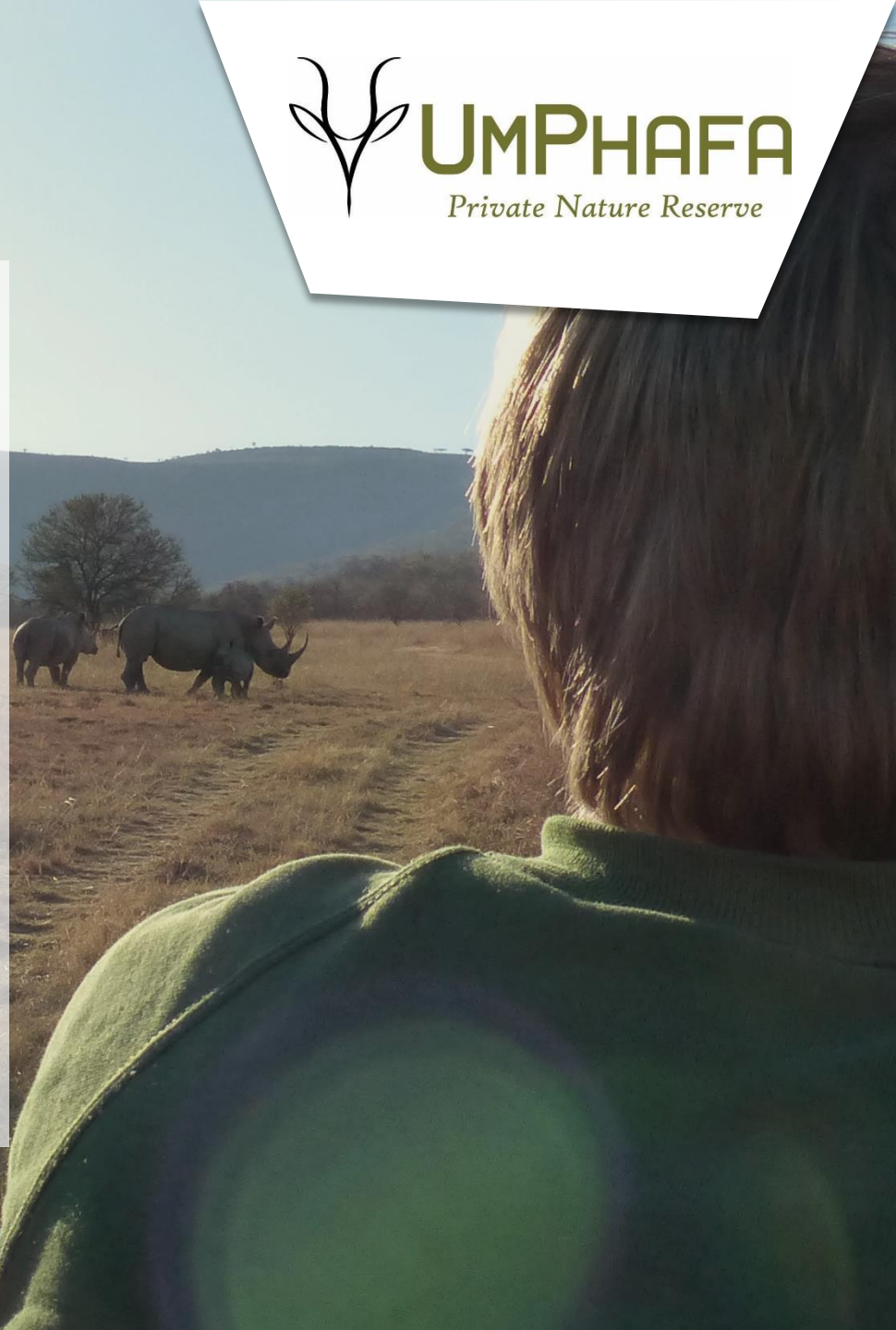
Private Nature Reserve



The Placement



- Legitimate projects – No pointless busywork!
- Opportunity to have a direct and noticeable impact on the reserve
- Chance to learn skills that cannot be taught in a classroom environment
- Gain a well-rounded understanding in the processes of reserve management



Research

Feeding Behaviour: Giraffes



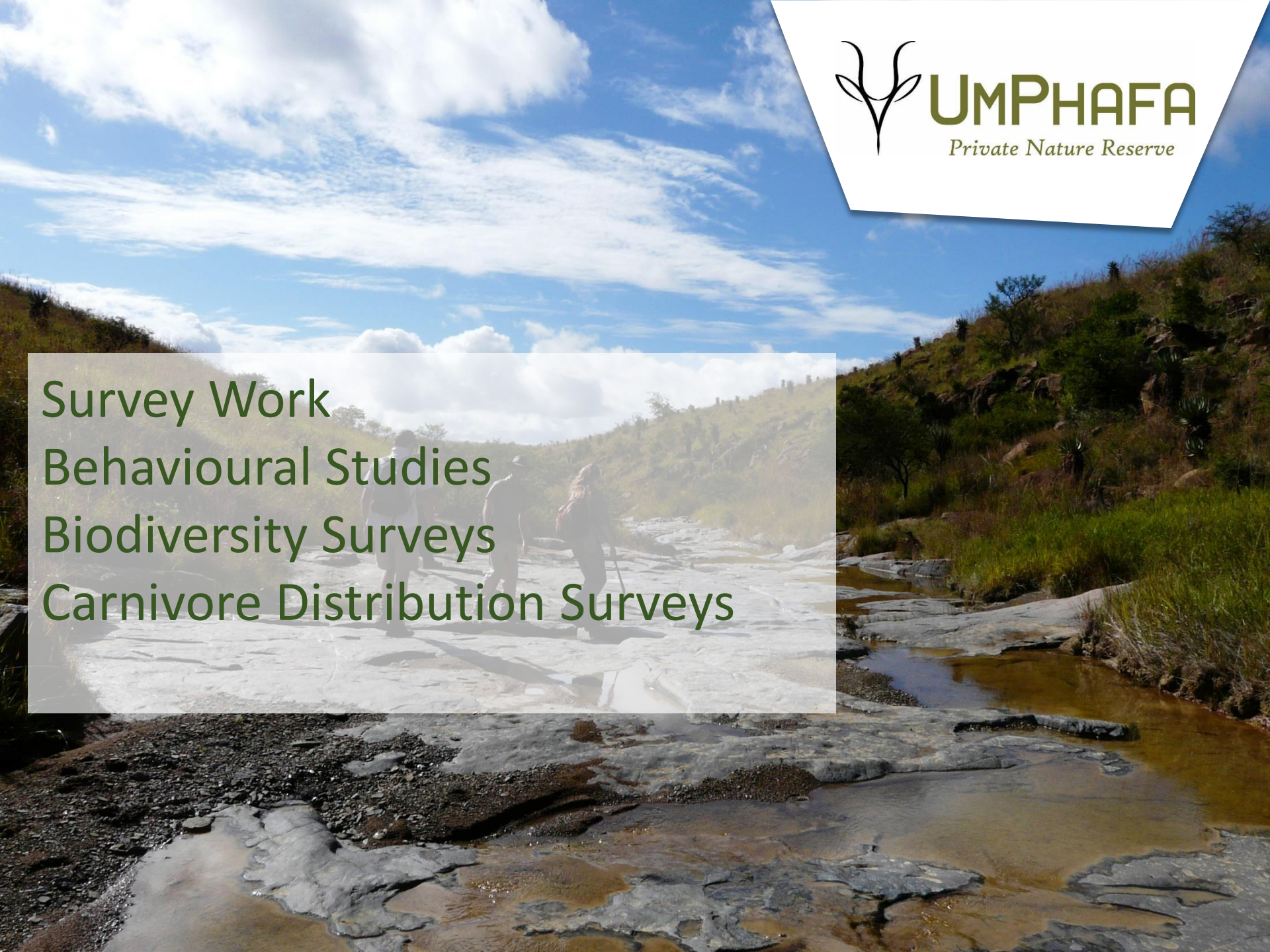
UMPHAFA

Private Nature Reserve

White Rhino Ecology



Game Census



Survey Work
Behavioural Studies
Biodiversity Surveys
Carnivore Distribution Surveys

Induction













UMPHAFA

Private Nature Reserve









UMPHAFA

Private Nature Reserve



- Support from staff every step of the way.
- Wide variety of habitats for comparison – from open woodland to grasslands
- No disturbance from general tourists
- High species richness and abundance



What is included

Accommodation
Meals
Transfers
Infield training
Wifi
Excursions

What's not included

Flights & Insurance (University organises)
Any necessary vaccinations

First four weeks: **£1220**
(under £44 daily)

Each four weeks after: **£620**

Available all year

Internship

First four weeks: **£920**
(under £33 daily)

Each four weeks after: **£620**

Off peak season

Research

More Information:

www.Umphafa.com

Facebook: Umphafa Private
Nature Reserve

Twitter: @Umphafa