



University of Essex



ESSEX

Study Abroad Prospectus



We are Essex **4**
Colchester Campus **6**
Southend Campus **8**
Academics at Essex **10**
Humanities **12**
Science and Health **14**
Social Sciences **16**
Student Support **18**
Student Life **20**
Employability **22**
Accommodation **24**
Applying **26**

WE ARE ESSEX

Rated Gold

Teaching Excellence Framework 2017

Home to the curious, brave and bold.

We're a university where curiosity prevails, and where exploring new ways of thinking and pushing boundaries isn't just encouraged, it's expected.

We're committed to two things: excellence in teaching and excellence in research. Our students are members of a unique, transformational living and learning community which empowers them with the skills to make a difference to the world around them.

Top 15
for overall student satisfaction

National Student Survey, 2017 English mainstream universities

Top 25
in the *Times*

Times Good University Guide 2018

Ranked 21st
most international University in the World

(THE, 2016)

40th
in EU for quality of teaching

(THE, 2018)



OUR GREAT LOCATION



Flight times from London airports

Amsterdam → 1hr
Paris → 1hr 15
Berlin → 1hr 50
Stockholm → 2hr 15
Barcelona → 2hr
Rome → 2hr 30
Dublin → 1hr 20
New York → 8hr



WELCOME TO COLCHESTER



Our Colchester Campus is one of the most internationally diverse campus universities, with the perfect environment for your academic study and social life.

You have access to state-of-the-art learning facilities, accommodation, shops, banks, bars, cafes, sports facilities, a gallery, a theatre – all in one location!

Colchester has great travel connections for both the UK and abroad. We're less than an hour away from Stansted Airport, which offers low-cost flights to many European destinations, and other London airports are easily accessible by public transport.

Things to Do

- Colchester Zoo is home to over 270 species of animal and offers a great day out close to the town centre
- The Colchester Castle museum and park offer a great introduction to the town's history and provides a green oasis in the centre of town
- Mersea Island is just an hour from campus, and offers some of the best sea-food around, including the famous Mersea oysters

WELCOME TO SOUTHEND

Located in the heart of Southend-on-Sea, our newest campus offers specialist resources and state-of-the-art facilities in a vibrant and exciting seaside town.

Famous for its beach resort and pier, Southend-on-Sea stretches along seven miles of award-winning coastline, providing plenty of opportunities for a wide range of water sports and leisure activities.

With over 300 places to eat, award-winning nightlife, a theme park, museums, sporting opportunities, and an international airport, we think you'll discover there's much more besides the seaside in Southend.

Things to Do

- Visit the Marine Activities Centre and try your hand at water sports, from sailing to windsurfing, jet-skiing to canoeing
- See a show at the historic Palace Theatre, which hosts music concerts, stand-up comedians, plays and musicals
- Take a walk along Southend Pier, visit the Royal Pavilion, play a round of mini golf, and take the train back



the forum
southend-on-sea



ACADEMICS AT ESSEX



We are an international community of original thinkers who believe in challenging convention and changing the world for the better.

At Essex our students don't just listen but learn to ask the difficult questions and then find the answers – learning how to lead, not just follow. Being part of Essex is about choice, relevance and developing you as a person. With us, you're not just a student, you're a member.

Our three faculties oversee teaching, academic development and research in our departments and schools while developing strong partnerships with business and industry.

Study Abroad AtEssex

We welcome students from around the world to study abroad at Essex and aim to offer you an outstanding international experience. You can join our international community of original thinkers and gain something unique within an academically challenging environment.

- **Flexible approach to academics** – Essex gives you the flexibility of studying multiple disciplines across our departments, and engaging with cutting edge research.
- **Pastoral Support** – Our Essex Abroad team will support you before, during and after your time with us.
- **Academic Support** – each academic department has a Study Abroad Officer on hand to provide academic advice and help you settle into the department.

HUMANITIES

Our Faculty of Humanities offers a unique, research-led student experience across a broad range of undergraduate, postgraduate and research programmes.

Our Faculty's outstanding reputation for research was confirmed by the 2014 Research Excellence Framework, with Essex ranked in the top 20 for research excellence in Philosophy, and top 10 for research excellence in Art History (REF 2014).

East 15 Acting School*

World Performance*

Department of History

History

School of Law

Human Rights

Law

Department of Literature, Film and Theatre Studies

Creative Writing

Drama

Film Studies

Journalism

Literature

Theatre Studies

School of Philosophy and Art History

American Studies

Art History

European Studies

Global Studies

Latin American Studies

Liberal Arts

Philosophy

*Southend Campus

SCIENCE AND HEALTH

Students at our Faculty of Science and Health develop the skills to address global issues and benefit people, the environment and society.

Our students learn from scientists who are working on vital issues including the nature of ageing, the meaning of genes, the future of the internet and the survival of coral reefs and climate change.

School of Biological Sciences

- Biochemistry
- Biological Sciences
- Biomedical Science
- Genetics
- Marine Biology

School of Computer Science and Electrical Engineering

- Computer Science
- Electronic Engineering and Communications
- Games Technology
- Robotics

School of Health and Social Care

- Health Care Law and Ethics

Department of Mathematical Sciences

- Actuarial Science
- Data Analytics
- Mathematics

Department of Psychology

- Psychology

School of Sport, Rehabilitation and Exercise Science

- Physiotherapy
- Sports Coaching
- Sports and Exercise Science
- Sports Therapy

SOCIAL SCIENCE

We are rated 4th in the UK for our research excellence in social sciences with our politics research confirmed as best in the UK (REF 2014).

Our Faculty of Social Sciences is home to some of the most highly-rated social science departments and research centres in the country.

Department of Economics

Actuarial Science
Economics

Department of Government

Human Rights
Politics and International Relations

Department of Language and Linguistics

English Language
Linguistics
Modern Languages

Department of Sociology

Anthropology
Criminology
Sociology

Essex Business School

Accounting Banking
Business Administration*
Business Management Finance
International Business and Entrepreneurship*
Marketing*
Tourism Management*

Department of Psychosocial and Psychoanalytical Studies

Childhood Studies
Psychoanalytic Studies

*Southend Campus

STUDENT SUPPORT

As a global community, we understand the needs and concerns of international students, and do our best to provide you with excellent support facilities.

Our welfare and support services include healthcare, immigration advice, religious worship facilities, and assistance with improving your academic skills, as well as places you can go if you just need to talk.

- **Student Services Hub** – university life can throw up all kinds of concerns and questions. If you need some information, advice or support to succeed, stay healthy and happy, the Student Services Hub has it covered
- **Health and Wellbeing** – advisers are on hand to help you stay physically, mentally and emotionally healthy
- **Talent Development Centre** – offers support and resources to identify your talents and strengthen those areas you need to develop
- **Immigration Advice** – talk to trained, experienced advisers who are authorised to give immigration advice regarding student visas to Essex students
- **Multi-faith chaplaincy** – offers pastoral care, a confidential listening ear and spiritual support to anyone in the Essex community, whether you consider yourself religious or not
- **Mentoring** – academic departments provide their own support services, with most departments running student mentoring schemes
- **Academic Support** – our lecturers and professors offer office hours for one-to-one guidance with your studies

STUDENT LIFE



Students' Union

When you join Essex, you'll automatically gain over 15,000 new brothers and sisters – your Students' Union family. This lot won't steal your clothes, tell on you, or fight you for the TV remote – they're here to support you, make sure you get your voice heard, and help you make the most of your time at Essex.

This is your chance to pursue your passions. You can meet like-minded people or try out something new with our Students' Union's 165 sports clubs and societies.

From the departmentally-focused and culturally-based, to the downright weird and wonderful (Harry Potter Society, anyone?), there's an SU society for everyone. Whether you enjoy cringing through those 'so-bad-they're-good' films, have a passion for politics, want to gain even more support and experience in your subject, or just want to see some friendly faces from your home country, the chances are there'll be a club or society for you to join. If you can't find what you're looking for, why not set one up?

For a full list see essexstudent.com/societies and essexstudent.com/sport



EMPLOYABILITY



Employability and Careers Centre

Essex is one of the UK's most internationally diverse campus universities with students from more than 130 countries. An Essex programme is not just about academic study; we also focus on developing you towards your future career.

Our Employability and Careers Centre helps you make the most of your Essex experience. You don't need to have your future all planned out before you see us. We offer friendly, professional support and one-to-one advice to all students.

We aim to help in enhancing your employability, directing you to exciting opportunities to develop your skills, improve your CV and gain valuable experience. Not sure what career path you want? The Employability and Careers team will help you develop your career plan and discover what skills and experience employers are looking for.

Within every faculty we have a faculty employability team who provide department-specific guidance and resources to help you make the most of your chosen discipline.

Volunteering

Want to be a part of something? The Student Union vTeam is here to make your experience at university more exciting and fulfilling. We love to volunteer and always have variety of projects that suit different people. Being a part of vTeam is a fantastic opportunity to meet new people, make friends, give something to the local community, and gain valuable skills for your CV.

Alumni Network

Our global Alumni Network means you will be connected to an existing network of professionals in your home country and abroad, which can be the key to unlocking your future success. After studying abroad at Essex, you too

will join this network and have access to the benefits that come along with it.

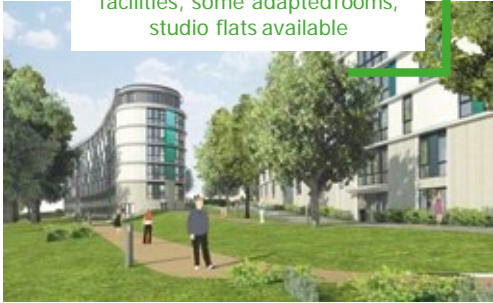
Benefits include a 10% on post-graduate course tuition fees! Take a look at what post-graduate courses Essex offers at essex.ac.uk/masters

ACCOMMODATION

The Copse

Cost per week: £153.58-180.46
Location: Colchester Campus

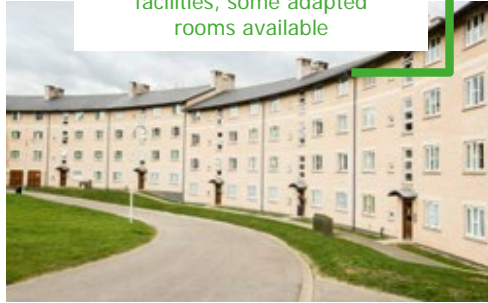
4-12 rooms per flat, en-suite facilities, some adapted rooms, studio flats available



South Courts

Cost per week: £144-£147
Location: Colchester Campus

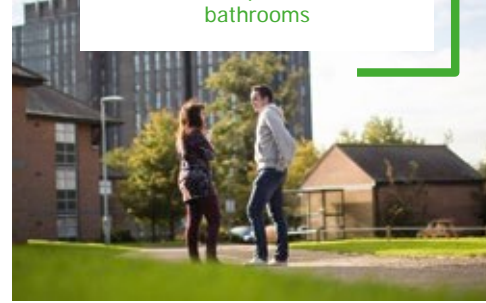
4-12 rooms per flat, en suite facilities, some adapted rooms available



The Towers

Cost per week: £82-£94
Location: Colchester Campus

13-16 rooms per flat, shared bathrooms



University Quays

Cost per week: £134-£160
Location: Colchester Campus

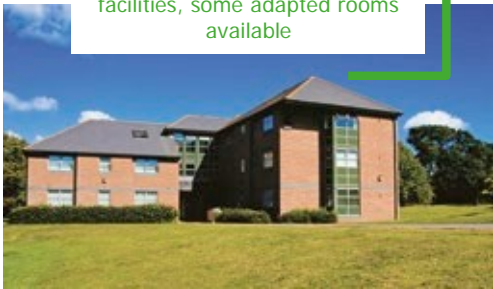
7-8 rooms per flat, en-suite facilities



The Houses

Cost per week: £131-£134
Location: Colchester Campus

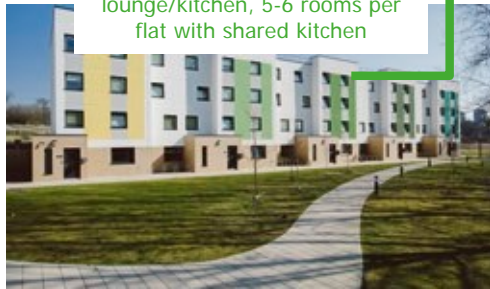
4-6 rooms per flat, en-suite facilities, some adapted rooms available



The Meadows

Cost per week: £141-£148
Location: Colchester Campus

12 rooms per townhouse with lounge/kitchen, 5-6 rooms per flat with shared kitchen



University Square

Cost per week: £144-£178
Location: Southend Campus

11 rooms per flat, en-suite facilities, studio flats have own kitchenette, some adapted rooms available



Our Residence Life team helps to create a welcoming and friendly community for you to live and learn in. You'll have a Residents' Assistant based in your area of accommodation who'll meet you soon after you arrive. They'll make sure that you have opportunities to get involved in University life and social activities, and provide support outside of office hours.



*all on-campus housing is self-catered
Prices listed are for 2018/19

APPLYING

Academic Requirements

You must be a current undergraduate or postgraduate student in good academic standing to apply to study abroad at Essex. We understand that this will differ institution to institution, so we require a copy of your academic transcript as part of your application.

You will need to satisfy the pre-requisites for your chosen course of study. Course and module specific information can be found at essex.ac.uk/modules

English Language Requirements

IELTS*: overall score of 6.0, with a minimum of 5.5 in each component.

TOEFL*: overall score of 76, with 17 in listening, 18 in reading, 20 in speaking, 17 in writing.

*must have been issued within two years of your application to Essex

Student Visa Requirement

You may require a visa to study abroad in the UK. You can check on the UK Visa and Immigration website: gov.uk/check-uk-visa

Fees*

EU-Students

Full year: £9,250

Autumn Term only: £4,150

Spring and Summer Terms only: £5,100

Non-EU Students

Full year: £12,250

Autumn Term only: £5,150

Spring and Summer Terms only: £7,100

Application Deadlines

31st May – October entry
(Autumn Term only or Academic Year)

21st October – January entry
(Spring and Summer Terms only)

Term Dates

Autumn Term – October to December

Spring Term – January to March

Summer Term – April to June

For specific dates, take a look at our academic calendar online

Exchange Students

If your university has an Exchange or Erasmus+ agreement with the University of Essex, then you may be eligible to study at Essex as an exchange student. Exchange students do not have to pay tuition fees. Not sure if this applies to you? Ask us!

Study Abroad Students

If your university does not have an exchange agreement with Essex, or if the exchange places are already full, you can still study at Essex as a fee-paying study abroad student.

You can apply directly to Essex via our website, or you can apply via a third-party provider, including:

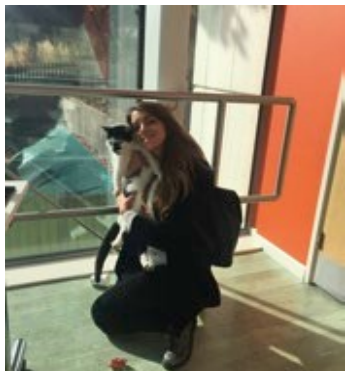
- Across the Pond
- Anglo-Chinese Holdings
- BEO Japan
- College Contact
- IRSS
- ISEP Direct
- SI-UK

Apply to Essex

Apply to study abroad at Essex through our online portal. Please email us for the link, or fill out our online form:

essex.ac.uk/study-abroad





Thank you to our exchange and study abroad students for these photos! #EssexAbroad

@peds_96 / @gabrielr03 / Emilia Di Leo / @wanna_be_ginger

@luisa_kucknat / Ilja Oosterbaan / @maddys_exchange

Essex Abroad

Colchester Campus

Wivenhoe Park

Colchester, CO4 3SQ

United Kingdom

T +44 (0) 1206 873976

E essexabroad@essex.ac.uk

essex.ac.uk/study-abroad

