



EAST 15 ACTING SCHOOL

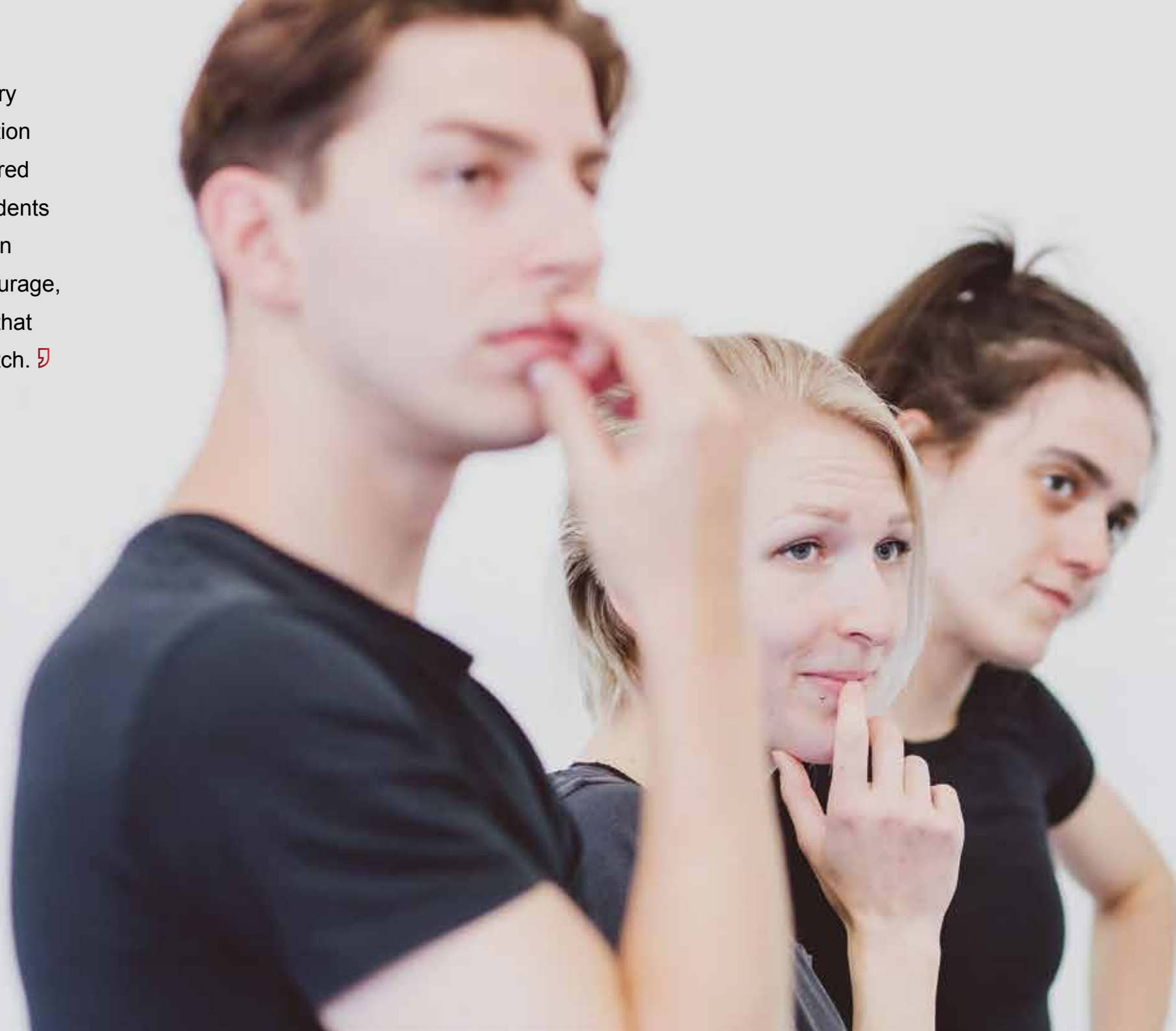
PROSPECTUS 2021





East 15's extraordinary legacy and its reputation for rigorous and inspired teaching ensures students consistently display an unusual degree of courage, vision and versatility that is very exciting to watch. 🎬

Colin Firth, OBE



We teach and train students from over
26 countries worldwide

Outstanding student satisfaction rating in the UK. **100% total satisfaction** in the 2020 National Student Survey

Over 50 years of experience in the industry

2 first class campuses one in Loughton, on the edge of London, and in picturesque Southend-on-Sea

1st for Drama in the Guardian University Guide 2020

For over 50 years, East 15 has produced actors, directors, producers, theatre practitioners and technicians for the international stage, TV, film and radio.



Contents

- 6. ABOUT EAST 15
- 8. OUR TRAINING
- 10. PRIZES AND AWARDS

OUR CAMPUSES

- 14. LIFE AT LOUGHTON
- 16. LIFE AT SOUTHEND
- 18. ACCOMMODATION
- 20. SUPPORT SERVICES
- 22. OUR EXPERT STAFF

UNDERGRADUATE STUDY AT EAST 15

- 28. BAACTING
- 30. BAACTING (INTERNATIONAL)
- 32. BAACTING & COMMUNITY THEATRE
- 34. BAACTING & CONTEMPORARY THEATRE
- 36. BAACTING & STAGE COMBAT
- 38. BA PHYSICAL THEATRE
- 40. BA WORLD PERFORMANCE
- 42. BA STAGE & PRODUCTION MANAGEMENT
- 44. BA CREATIVE PRODUCING (THEATRE & SHORT FILM)
- 46. CERTIFICATE OF HIGHER EDUCATION IN THEATRE ARTS
- 48. APPLYING FOR UNDERGRADUATE COURSES
- 50. UNDERGRADUATE AUDITIONS
- 52. MONEY MATTERS – UNDERGRADUATE

POSTGRADUATE

- 56. MA ACTING
- 60. MA **OR** MFA ACTING (INTERNATIONAL)
- 64. MA **OR** MFA THEATRE DIRECTING
- 66. MA ADVANCED PROFESSIONAL THEATRE PRACTICE
- 68. PHD DRAMA & PERFORMANCE (PRACTICE AS RESEARCH)
OR PHD DRAMA & PERFORMANCE
- 70. APPLYING FOR POSTGRADUATE COURSES
- 72. POSTGRADUATE AUDITIONS
- 74. MONEY MATTERS – POSTGRADUATE

-
- 76. UNIVERSITY OF ESSEX
 - 78. IMPORTANT INFORMATION



About East 15



The School has two campuses – one in Loughton on the edge of East London and the other based in the vibrant and modern resort town of Southend-on-Sea.

Both Campuses have quick and direct links to London's West End theatre district, whilst also offering a peaceful setting in which to study.

The school was founded by **Margaret Bury** and grew from the work of **Joan Littlewood's famed Theatre Workshop**, which broke new ground re-interpreting the classics for a modern age, commissioning new plays from socially committed writers, and creating an ensemble capable of inventing new work that **combined improvisational brilliance with method, technique, research, text analysis and the intense expression of truthful emotion.**

Much of the original approach was based upon the theories of **Stanislavski** and over the years training methods at East 15 have now embraced approaches from diverse practitioners, such as **Michael Chekhov, Rudolf Laban, Jerzy Grotowski, Jacques Lecoq, Peter Brook, Sanford Meisner** and other important contemporary trainers.



In 2000, East 15 merged with the **University of Essex**, a leading UK research-intensive university, opening an exciting new chapter in the history of both institutions and offering more opportunities to students, including our specialist courses.

Since 2007, more than **£13 million has been spent on new buildings and facilities for East 15** in both Loughton and Southend, including Southend's Clifftown Theatre and Studios, once a Victorian gothic church which now enjoys a new lease of life, converted into **studios, workshops and a state-of-the art theatre.**

East 15 offers an extraordinary, dynamic and unique portfolio of courses that span many areas of **training for actors, directors, producers, technical theatre specialists and students of**

theatre practice. It is one of a leading group of UK conservatoires and is now **one of the largest specialist drama schools in the UK**, with a distinguished international teaching staff and an undergraduate and extensive postgraduate population of over 800 students.

In addition to the carefully selected UK students, we also **teach and train students from over 26 countries worldwide.**

Our training is **by professionals and for professionals**, allowing our graduates to work successfully across the globe. Our outstanding international teaching faculty is made up of professionals from all areas of live and recorded performance.

Our Training



East 15's training emphasises a balance between personal discovery, intuition and technical skills. The aim is to give students the basic awareness and confidence that will allow them to continue to learn and perfect their craft in the years to come.

MOVEMENT

The main focus of the movement programme at East 15 is to **encourage confident, focussed, flexible, imaginative, physically expressive and truthful actors**. The training is based on dynamic alignment (which may include Alexander, Authentic Movement, Bartenieff, Body Centring Experiential Anatomy and Pilates), characterisation techniques (including Laban, Grotowski, Lecoq and Chekhov-based work), dance (including jazz and ballet) and stage combat.

VOICE

The voice teachers at East 15 aim to equip you with the skills required to **release your full vocal potential beyond the limits of "habit" voice**. You will combine emotional truth with theatrical energy using techniques derived from leading physical and vocal practitioners like Laban, Chekhov, Berry and Linklater.

SINGING

Actors must have a good feel for music, even if their strengths lie

elsewhere. At East 15 you will **learn to understand the rudiments of music and be able to approach a song with confidence and feeling**. Students with musical theatre potential will be encouraged further although the overall emphasis is on acting through song.

MUSIC

Students with the ability to play musical instruments can **develop those talents** and there are numerous possibilities to play in ensembles for private and public performances at East 15. Although instrumental playing is not part of the assessment, actors who develop such skills certainly enhance their employability.

MEDIA

You are introduced to the **techniques and disciplines** of working with recorded, digital and online media.

PREPARATION FOR THE INDUSTRY

Guest lectures and workshops, given by **industry specialists**, help prepare you for the complexity of working in theatre, film, TV and related areas.



Prizes and Awards

As one of the UK’s leading Drama Schools, East 15 students are eligible for a number of awards and competitive scholarships.

BAFTA SCHOLARSHIP

First awarded in 2015, the British Academy of Film and Television Arts Scholarship **provides funding to aid aspiring actors studying at, and applying for, FDS accredited courses.** In addition to financial support, the recipients also receive **one-to-one mentoring** on their acting by BAFTA members.

The first recipient of the scholarship was BA Acting student Jason Harris who was awarded £6,000 to support his training at East 15.

CARLETON HOBBS AWARD

This bursary provides winning students a contract for **six months work with the BBC Radio Drama Department.** A long list of East 15 students have enjoyed recognition through this competition.

Past winners have included BA Acting graduates Laura Christy (2019), Alexandra Constantinidi (2018), Patricia Allison (2017), Joseph Ayre (2016), Roslyn Hill (2014), Alex Rivers

(2011) and Leah Brotherhead (2010). Runners-up and commended nominees have included Emily Meechan (2019), Jezebel Simpson (2019), Phebe Alys (2018), Andrea Valls (2015) and Eleanor Dillon–Reams (2012).

EQUITY STUDENT BURSARY

Equity is the UK trade union for professional performers and creative practitioners, known and respected

internationally for the work with, and on behalf of, members working across all areas of the entertainment industry.

Each year, two students are selected to be awarded a Bursary worth £500.

One 2015 recipient was BA Acting and Contemporary Theatre student Scott Lyons.

THE JOHN GIELGUD BURSARY

This bursary is **worth between £2,500 and £5,000** and has been won by the following students from East 15:

Sebastian Gardner (2019, £5,000), Lily Sinko (2018, £5,000), Sam Edmunds (2017, £4,500), Gabriella Leon (2016, £4,500), Kathleen Hood (2015, £4,500), Jamie Riley (2014, £4,500), Daniel Johnson (2013, £4,000), Olivia Hirst (2012, £4000), Daniela Pasquini (2011, £4,000), Candice Fraser (2010, £3,500), Stephanie Appleton (2009, £3,500), Daniel Jenkins (2008, £4,000) and Marsha Henry (2007, £3,500).





Supporting career progression is an important part of the East 15 ethos. ↗

THE LAURENCE OLIVIER BURSARY

This is worth up to £7,500 for a student entering the third year of BA Acting and is **presented by the Society of London Theatre**. East 15 students have regularly won this outstanding prize. Olivia Frances Forrest was the 2019 recipient. Other winners have included; Paisley Jackson (2016) awarded £2,250, Rebecca Saffir (2015) and Lottie Finklaire (2014) awarded £500, Nayatia Hinds and Nathalie Wain (2012) each awarded £2000, Anna Tall (2010) awarded £1,500,

Paul Thomas (2009) awarded £2,500 and in 2008 Frances McNamee won the top award of £7,500 while Thomas Nelson also won an award of £2,500.

LILIAN BAYLIS AWARD

This is **worth £1,500 and has been consistently won by students from East 15**, including Molly Rolfe (2019), Rory Howes (2018), Jennifer Woodward (2017), Ben Ayers (2016), Isabella Javor (2015), Livia Heim (2014) and Lucy Townsend (2013).

LIONEL BART AWARD

The Lionel Bart Award **aims to help**

final year students who are suffering financial hardship. This award is applicable for postgraduate and undergraduate students wishing to pursue a career in the theatre. Previous winners include Crystelle L'Amie (2019, £750), Jacob Krefeld (2019, £750), Savannah McRory Grant (2019, £500).

EAST 15 AWARDS

There are several awards which are unique to East 15.

The **Elizabeth Mills Award** was established in 2016 and is worth £2,500. First awarded to BA Acting's

Patricia Allison, the 2017 recipient was BA Acting & Contemporary Theatre's Cara Baldwin. In 2018 it was won by BA Acting & Contemporary Theatre student Louise Barron.

The **Jacobs Ladder Bursary** is a sponsorship fund for year 2 & 3 BA Acting students. Founded in 2016 by Chris and Angela Graham, the Bursary has supported a large number of students with **individual awards ranging from £1,000 to £9,000**.

Year 2 & 3 BA Acting students are automatically eligible for this funding. In 2019, 20 students received financial support from this Bursary.

The £500 **Tim Welling Award** commemorates a past student of the school and is awarded to a BA Acting student. It was first awarded

in 2014 to Ellie Moon. Subsequent winners have been Katie Neil (2015), Hadley Brown (2016) Jacob Reid (2017), Molly Longworth (2018) and Polly Baron (2019).

Also commemorating a past student, and again worth £500, the **Thomas Bennett Comedy Award** is awarded to a BA Acting & Contemporary Theatre student. James Malone was awarded the 2019 prize. Previous winners include Florinela-Sidonia Doica (2018), Jaouhar Ben Ayed (2017) and Allie Munro (2016).

EDINBURGH FESTIVAL AND BEYOND

Supporting career progression is an important part of the East 15 ethos and we are proud to support our graduates through the University of

BA Acting & Contemporary Theatre student Molly Rolfe (front left of centre) receives the 2019 Lilian Baylis Award from Adrian Lester OBE.



Essex **'Click'** crowdfunding platform which is open to all current and past students and, in many cases, also **offers match funding for projects**. Last year it supported some 22 productions to the tune of over £23,250.

POSTGRADUATE SCHOLARSHIPS

There are a number of Bursaries and Scholarships available to **Postgraduate Students**. Please see the University of Essex website (search: postgraduate scholarships Essex) for more details.

Life at Loughton



Our Loughton Campus is perfectly located, providing access to both the rich, cultural diversity of London and an attractive and peaceful setting in which to study.

We are just a five-minute walk from London Underground station, Debden, where you can **travel in only thirty minutes to Central London**, West End theatres and mainline train stations including the Eurostar.

Loughton is situated on the edge of Epping Forest, a **6,000-acre ancient**

woodland which is ideal for leisure pursuits including walking, running, cycling and horse riding. The town offers a rich variety of shops, restaurants, pubs and cafés and has a leisure centre providing gym and pool facilities.

We have three sites at our Loughton Campus – **Hatfields, Roding House** and **Unit Four**. **Hatfields** is a beautiful Georgian dower house, set in five acres of lawns with orchards, flowerbeds and a small lake, providing an idyllic atmosphere for study, relaxation and performance.

Just a short walk from Hatfields is **Roding House**, a £1.3 million facility containing 10 rehearsal rooms, a green room/café, a sound recording studio and a video editing suite, and our costume department.



Next to Roding House, **Unit Four** is a £1.5 million facility which is home to the Stage & Production Management department. The Unit contains a large workshop, paint shop, prop shop, prop storage facilities and teaching spaces.

HATFIELDS

- **28 rehearsal studios** including a dance studio, radio-recording room and screening room
- **The Corbett Theatre**, named in honour of Harry H Corbett, a key member of Joan Littlewood's Theatre Workshop and early benefactor of East 15. The building is a medieval tithe barn that was dismantled and transported to Hatfields in the 1960s. **Renovated to include full technical facilities, tiered seating for 130 people and fitted dressing rooms**, the theatre provides an excellent resource for public productions. Lectures, rehearsals and technical classes also take place here, while the adjacent **Bar and Café provides a social meeting point for students and staff**

- As part of an investment in the further development of resources at the Loughton Campus, 2017 saw the opening of a new multi-million pound **IT suite and extended Campus library**. Students can also use the library resources at the Southend Campus and the University of Essex's Colchester Campus library, which has holdings of over one million books and microfilms, as well as some 7,300 current periodicals. Books are regularly delivered to Loughton via an internal courier. **All students receive free printing on Campus and there is wireless connectivity throughout the site**
- **Work has already begun on a major set of new buildings and facilities** at this site

RODING HOUSE

- **10 rehearsal rooms**, a green room/café, a **sound recording studio and a video editing suite**.
- Extensive **costume department**
- **Computer facilities** providing internet access, printing and photocopying

UNIT FOUR

- Situated next to Roding House and **home to East 15's Stage & Production Management department**, the Unit contains a **large workshop, paint shop, prop shop, prop storage facilities and teaching spaces**



Life at Southend

Our Southend Campus is based in the heart of this vibrant and modern seaside town.

With its lively, **state-of-the-art facilities and a close-knit international community**, Southend is the perfect environment for living and learning.

Famous for its **beach resort and pier**, Southend-on-Sea stretches along seven miles of award-winning coastline. There are also over 650 acres of parks and gardens, a fun park, leisure centres, pubs, clubs, cafés and restaurants.

Southend Central railway station is opposite our campus and **the journey to central London**

takes less than an hour. London Southend Airport, with flights to many European and UK destinations is just three miles away. We are also just one hour away from **London's Stansted Airport**.



GATEWAY BUILDING

- The Gateway Building houses a **purpose-built suite specifically for East 15 students**. This includes **fully equipped, state-of-the art rehearsal studios** with panoramic views across Southend-on-Sea, plus **seminar rooms, computer labs and media production resources** including an Apple Mac edit suite for our BA (Hons) Creative Producing students

CLIFFTOWN STUDIOS AND THEATRE

- A magnificent Victorian former church in the heart of Southend's conservation area was converted into our **Clifftown Theatre**. It also houses a variety of **unique spaces for rehearsals, technical and practical work and performances**. The church nave, with its original organ and stained glass windows now provides an inspirational and atmospheric environment, re-designed to accommodate the needs of a twenty-first century performance space

THE FORUM

- In 'The Forum' building, students have round the clock, secure access to the **Learning Hub**, which provides **innovative IT and study spaces**. The Forum also houses an integrated public and academic **library**, carrying books and other support materials. Students in Southend also have access to the East 15 Loughton Campus library and the University's Colchester Campus library

THE STUDENTS' UNION

- The Students' Union at our Southend Campus provides a dedicated space for students to meet, have a coffee, relax and watch films or sport. It runs a wide variety of **entertainment** throughout the term, such as **international nights and open mic nights**



Accommodation



LOUGHTON CAMPUS

Our Loughton East 15 students **live and study in the local area and our Student Services Team are here to help** with any questions you may have. Choose between a shared house, living with a landlord or letting a whole house – **our advisers will guide you through the whole process!**



If you have any questions, contact our Student Services Team by emailing

askthehub-lc@essex.ac.uk

We don't have accommodation to offer you, but we know a lot about living and learning in and around Loughton.



SOUTHEND CAMPUS

Our **state-of-the-art student residences** in University Square offer **561 modern en-suite rooms arranged in flats**, within seven houses around a central enclosed courtyard. You **apply for accommodation**

directly to the University which aims to guarantee accommodation to all first-year undergraduates. Many of our students also choose to move into rented accommodation in the heart of Southend.

Support Services

We offer a range of support services designed to help you to achieve your full potential and to get the most out of your studies.

These form a **coordinated network of support**, and are an important part of the overall student experience. Support Services aim to be **accessible to you and responsive to your individual needs**.

We offer **confidential advice and information** on many issues, including finance and funding, entitlement to benefits and immigration issues.

There are Student Support Advisors **available at the Loughton and Southend Campuses** who can offer initial advice and information. You may be referred to other services for specialist advice. Helpful information is also available on the website at **www.essex.ac.uk/students** and the Students Union Advice Centre website at either **www.essexstudent.com/loughton** or **www.essexstudent.com/southend**

DYSLEXIA AND OTHER LEARNING DIFFERENCES

We have a strong tradition of **encouraging and supporting students with dyslexia and other specific learning differences**. Provision includes: screening and/or referral for a diagnostic assessment and advice on the Disabled Students' Allowance.

STUDENT WELLBEING

We offer a **Wellbeing service on campus**. Our Wellbeing Team offer a **drop-in and appointment service** which is dedicated to promoting positive wellbeing. They can sign post you to a number of support services that the University have to offer internally and externally. For more information, please see the website: **<https://www.essex.ac.uk/information/professional-services/student-wellbeing-and-inclusivity-team>**

DISABILITY

We aim to create an **accessible and enabling environment**. We would encourage you, before you arrive, to contact the relevant disability service to discuss access to the University and to your course. These discussions are confidential. Students may qualify to apply for the Disabled Students' Allowance and can contact us for advice. **www.essex.ac.uk/students/contact/**

STUDENT ADMINISTRATION

At the Loughton Campus, we are able to provide students with official letters and documentation, such as bank letters, confirmation of enrolment and council tax exemption forms, as well as authenticating documents by providing a University stamp for specific forms. General, non-academic advice can also be given about other services provided by the University of Essex and the Students' Union.

At the Southend Campus, all of the above services are available from the Student Administration Team.

PASTORAL SYSTEM

Conservatoire training can be demanding and, in response to this, the School has developed a network of support to help with academic and personal pressures. **A personal tutor is appointed to each student** and they are a channel for any enquiries or anxieties that the student may have.

GRADUATE SUPPORT

East 15 and the University are committed to helping graduates enter their chosen career with confidence. This support is given in the second and final year of undergraduate courses and throughout the year for postgraduate students. It includes **career guidance, casting and audition preparation and advice from working professionals**.

Support Services aim to be accessible to you and responsive to your individual needs. We offer confidential advice and information on many issues. ↵



Our Expert Staff

DR CHRIS MAIN

Director

Chris Main is the Director of East 15 Acting School, and has been a part of the school for over a decade, teaching classes in acting, Shakespeare and stage combat. He has directed numerous shows for East 15 - including a Martin Lynch premiere - and has also directed several productions for the Royal Armouries at the Tower of London. Alongside his career in education, Chris worked as a fight director / fight arranger in theatre and film, working for many theatre companies, across various theatres, including: The Orange Tree, Royal & Derngate, The Northcott, The Bush, English Theatre (Frankfurt), The Mercury Theatre, and the Stephen Joseph Theatre. Chris has also run bespoke projects for the Royal Armouries, Leeds City Council, Cambridge Arts Theatre, and Crucible Theatre. His screen work includes projects for the History Channel and a research and development project for video game developer and publisher, Codemasters.

Chris holds an MA in Theatre Practice and a PhD in Elizabethan/Jacobean Theatre from the University of Exeter. He spent close to 20 years as a Certified Teacher of Stage Combat with the British Academy of Stage and Screen Combat, has acted as a fight examiner for Stage Combat Germany and holds a black belt in the Japanese martial art, Aikido.

MATTHEW LLOYD

Associate Director (Loughton) and Head of MA/MFA Theatre Directing

After graduating from Oxford, Matthew went on to study at Harvard and Columbia Universities. Whilst Artistic Director at the Royal Exchange Theatre, Manchester his productions included the award-winning *An Experiment with an Air-Pump*, and *Waiting for Godot* with Richard Wilson. As Associate Director at Hampstead Theatre his work included the multi-award-winning *The Fastest Clock in the Universe* by Philip Ridley, the UK premiere of *Slavs!* by Tony Kushner and the Olivier Award winning *The Lucky Ones* by Charlotte Eilenberg. Freelance credits include the Olivier-nominated *Duet for One* with Juliet Stevenson and productions at the Almeida, Royal Court, the Bush, most of Britain's leading regional theatres, plus Off-Broadway and Parco Theatre, Tokyo. Recent credits include *How to Date a Feminist* by Samantha Ellis at Arcola Theatre/national tour, *The Welsh Boy* and *The Good Soldier* by Julian Mitchell at the Ustinov Theatre, Bath and his verbatim projects *Listen, We're Family* and *The Pilgrimage Project* at Wilton's Music Hall.

AINSLIE MASTERTON

Associate Director (Southend) and Head of BA Acting & Community Theatre

Ainslie Masterton is an actor, theatre director and acting teacher who has worked in the Performing Arts Industry for over 25 years. Combining expertise in therapeutic methodology, social exclusion and group process, Ainslie has developed innovative approaches to practice-based learning and has led East 15 Acting School's BA (Hons) Acting & Community Theatre program for twelve years.

In her career, she has created work for diverse organisations including the Sydney Opera House, ABC television, Disability Rights organisations, the Law Council, HMP Bullwood, the National Trust, and various remote Australian aboriginal communities.

As a director, Ainslie specialises in site specific, promenade, verbatim and community performance. Her recent practise as research is development of site specific performances using verbatim script fragments derived from archived interview material for Tavistock Institute, National Trust and Bata.

PROFESSOR ROSEMARY KLICH

Director of Research and Head of BA Creative Producing (Theatre & Short Film)

Rosemary specialises in multimedia, immersive, and participatory theatre. Prior to joining East 15 in 2017, she was Head of Drama and Theatre at the University

of Kent where she taught since 2007. Her current research investigates media, sound, and spectatorship, and her teaching expertise is in the theory and making of contemporary performance practice. Her co-authored book *Multimedia Performance* was published with Palgrave in 2012 and she has since published in journals such as *Contemporary Theatre Review*, *Performance Research*, *International Journal of Performing Arts* and *Digital Media*, and *Body Space Technology*. She has also undertaken various practice-as-research projects working in collaboration with performers, videographers, sound designers and photographers.

Rosemary holds a PhD from the University of New South Wales in Sydney, Australia and has presented keynote talks at conferences and symposia in Poland, Korea, Belgium and the UK.

ANDREA BROOKS

Head of MA Acting

Andrea Brooks was Artistic Director of Zygo Arts, an award-winning theatre and arts company working in the UK and internationally, including in Lithuania, Italy and the Republic of Georgia. She trained as an actor at the Drama Centre. Her career was as a theatre director and producer and continues as a mentor to award-winning artists in various genres. Andrea is a Principal Fellow of the Higher Education Academy. Her educational focus is on reflective practice and well-being.

DR. MARGARET COLDIRON

Deputy Head of BA World Performance

Margaret Coldiron is a specialist in Asian performance and masks. She is a member of the Directors Guild of Great Britain and a Fellow of the Royal Asiatic Society and is widely published. After taking a degree in English and Comparative Literature she trained as an actress at the Drama Centre. She holds an MA in Text and Performance Studies from King's College and RADA and a PhD in Drama from Royal Holloway.

She has studied Topeng masked dance drama and mask carving in Bali and has worked with Japanese Noh masters Matsui Akira (Kita school), Umewaka Naohiko (Kanze school) and Michishige Udaka (Kongoh school). She has also undertaken extensive fieldwork on masked performance in India, Sri Lanka and Thailand.

She is Associate Director of Thiasos, a theatre company specialising in intercultural productions of ancient Greek plays, and regularly performs Balinese music and dance with Gamelan Lila Cita.

SIMON HUNT

Head of BA Physical Theatre

Simon Hunt is an actor, theatre director and acting teacher who has worked in the Performing Arts Industry for the last 25 years.

Having worked with some of the most exciting international companies, including performing in the international hit show *De La Guarda*, and teaching

at a number of the top drama schools in the UK, Simon emigrated to Sydney in 2003, where he was Course Director of the full time Acting course at Actors Centre Australia. In addition to over 50 shows and projects he has directed and created for drama schools, he has also worked professionally as both a Director and Movement Director for TV and theatre projects. As an actor, he has worked at many theatres across the UK including The Young Vic and Victoria Palace in the West End, Nottingham Playhouse, the West Yorkshire Playhouse, Theatre Royal, Plymouth and The Gate, Notting Hill.

Most recently, Simon has been performing with Mimbire, in their RSC commissioned show, *Wondrous Strange*.

DR ADRIAN JAMES

Course co-ordinator for Certificate in HE (Southend)

Dr Adrian James trained at the Drama Centre London and worked as an actor in the U.K. and Europe. He taught at East 15 under its founder Margaret Bury Walker and has directed productions in London and Edinburgh. He was the Associate Director of Acting at the Arts Educational Schools London, where he led the United Kingdom's first vocational M.A. in Acting. He gained his Fellowship of the Higher Education Academy from The Royal Central School of Speech and Drama and his PhD from City University of London. He has taught regularly at the Actors Centre, London and in Stockholm at the Dramatiska Institutet. He leads the Certificate of Higher Education in Theatre Arts at East 15's Southend Campus and is a Fellow of the Royal Society of Arts.

GORDON KEMP

Head of BA Acting & Stage Combat

Gordon holds an MA (Hons) in Political Science from the University of Dundee and a Postgraduate Diploma in Classical Acting from the London Academy of Performing Arts. He is a certified teacher of stage combat with both the British Academy of Stage and Screen Combat (BASSC) and the British Academy of Dramatic Combat (BADC) serving a 5-year apprenticeship at Shakespeare's Globe Theatre as part of his training. As a Fight Director & Performer he has worked with a range of venues and theatre companies including Riverside Studios, The Royal Ballet, The Royal Opera, Shakespeare's Globe and Theatre Royal, Bath. He has also worked as an action performer, most recently on the TV series Vikings.

GERRY MCALPINE

Head of First Year Studies and Course co-ordinator for Certificate in HE (Loughton)

Gerry McAlpine is an East 15 graduate from the mid-1970s. She worked with Margaret Bury, who founded East 15, during the years before she retired, and is proud to be able to pass on her East 15 training. She worked as an actress in Canada and England before returning to teach at East 15.

ZOIS PIGADAS

Head of Contextual Studies and Head of BA Acting (International)

Zois Pigadas is from Athens, Greece and has studied Theatre at an undergraduate level at York University in Toronto, Canada, followed by postgraduate studies at Goldsmiths College, University of London. He has been teaching actors and theatre students for more than 15 years at, among other institutions, E15 Acting School, Goldsmiths College, University of Kent and Rose Bruford College. He specialises in workshopping and devising Forum Theatre and has developed a methodology of Active Analysis based on the teachings of Jurij Alschitz.

ALEX PURSER

Head of Stage & Production Management

Alex Purser holds a BA (Hons) in Drama with English and an MFA in Theatre Directing.

He has spent the past 14 years working in the industry as Project, Production and/or Stage Manager in a variety of contexts including musical theatre, opera, ballet, tours and events.

Alex has worked both in the UK and internationally, working on projects in China, France, Italy, Spain, Holland and Germany. His industry experience is varied, ranging from local theatre productions, through to large West End musicals such as Phantom of the Opera 25th Anniversary, Lion King, Billy Elliot, Sweeney Todd (Chichester Festival Theatre & West End transfer) and touring productions including Sister

Act and Wicked. He has also worked on productions at the Royal Opera House, English National Opera, events at the Royal Palaces, the Paralympic Closing Ceremony and even a Disney Theme Park ride!

URI ROODNER

Head of BA Acting & Contemporary Theatre

Uri has an extensive career as a performer, director and mentor working in theatre, film and TV.

He has appeared in major British theatres including The Royal Court, National Theatre Studio and The Arts Theatre West End, and collaborated with leading companies including The RSC, Gecko and The Clod Ensemble. He appeared in films by major directors such as Michael Winterbottom, Jose Pedilha and The Brothers Quay. He appeared in TV, on radio and in TV commercials in more than 15 countries, and worked as a documentary film maker for The BBC, Channel 4 and The Discovery Channel USA. His award winning Theatre Company 'Tottering Bipeds' toured to many venues in Britain including The Lyric Hammersmith, Sadler's Wells, Sheffield Crucible, Edinburgh Traverse and Plymouth Theatre Royal. The company toured abroad and their work was filmed for a dedicated BBC2 documentary.

Uri's eclectic training includes The Drama Studio London, École Philippe Gaulier Paris, Monika Pagneux, Pierre Byland, Desmond Jones School and the National Film School. He has taught actors in London, New York, Shanghai, Amsterdam, Madrid and Tel-Aviv.

DR. RAMIRO SILVEIRA

Head of BA World Performance

He holds a PhD in Theatre Pedagogy - Theatre Artist Training from the University of São Paulo (Brazil) and an MFA in Theatre Directing from the University of Middlesex (UK). He also trained with Eugenio Barba, Philippe Gaulier, Genadi Bogdanov, Thomas Leabhart, among many others.

He is known for his innovative theatre rehearsal process called Theatre Playground, a study of presence and relation based on rhythm, movement and multicultural references in order to inspire creative live theatre. Since 2001 he has been using his technique to direct plays and run acting and directing workshops all over the world.

He works with a wide range of global performance styles, many drawn from Brazilian traditional forms, music and rituals. Ramiro has directed more than 30 plays in Brazil and abroad and has received several awards, including the Volkswagen Theatre Award for his version of The Bald Soprano by Ionesco and the Brazilian International Press Award for his achievements as an international theatre director.

ROBIN SNELLER

Head of MA/MFA Acting (International)

Robin trained at East 15 with its founder Margaret Bury-Walker before working for 30 years as a professional actor with some of the UK's most highly respected and influential theatre companies and practitioners.

His work as an actor includes seasons at the National Theatre working with Nicholas Hytner and William Gaskill, and in London's West End including Sir Peter Hall's production of Mind Millie for Me by Feydeau. His work also includes productions with Stephen Daldry at the Gate Theatre and the Crucible Theatre, as well as many seasons at the Glasgow Citizen's Theatre and Edinburgh Royal Lyceum theatres. Television includes work for the BBC, ITV and HBO.

For many years, he has also taught and directed in drama schools across the UK including at Arts Educational, East 15, the Royal Conservatoire of Scotland (RSAMD), where his work includes a production of Richard III which toured to the International Shakespearean Festival in Poland and the Royal Welsh College of Music and Drama, where he specialised in teaching Shakespeare and Comedy of Manners.

Robin has been Head of the MA/MFA Acting (International) course at East 15 since 2013.

PHILIP WEAVER

Head of BA Acting

Philip Weaver trained at The Royal Scottish Academy of Music and Drama and Goldsmiths' College, University of London.

Philip has worked as an actor and director for theatres including BAC, Birmingham Rep, Colchester Mercury, Glasgow Citizens, The Kings Head Islington, The Lyric Hammersmith, Nottingham Playhouse, The Oval House, RSC Summer Studio, Salisbury

Playhouse, The Scottish Chamber Orchestra, Theatr Clywd, Wolsey Ipswich and The Young Vic, as well as BBC Radio Four. He has also worked in Holland, Belgium, Slovakia and Scandinavia.

CAROLINE WEBSTER

Head of Screen Acting and Recorded Media

Caroline trained at Arts Educational and began her career as an actor. Theatre work included several productions with Alan Ayckbourn at the National Theatre and in the West End, and at Chichester in the inaugural company that opened the Minerva Theatre under the direction of Sam Mendes. She appeared in numerous television series, and became a familiar face as paramedic 'Jane Scott' in BBC1's Casualty. Thereafter she began writing and directing screen drama, producing short films to be shown at festivals, on television and distributed to the education market. Caroline's freelance activities include delivering workshops at the Actors Centre and coaching professional actors for TV/film auditions and self-tapes.

To find out more information about our skills staff and tutors, please see our website:

https://www.east15.ac.uk/staff

Undergraduate Study

East 15 currently offers the following courses for undergraduate students:

BA ACTING

BA ACTING (INTERNATIONAL)

BA ACTING & COMMUNITY THEATRE

BA ACTING & CONTEMPORARY THEATRE

BA ACTING & STAGE COMBAT

BA PHYSICAL THEATRE

BA WORLD PERFORMANCE

BA STAGE & PRODUCTION MANAGEMENT

BA CREATIVE PRODUCING (THEATRE & SHORT FILM)

CERTIFICATE OF HIGHER EDUCATION IN THEATRE ARTS



East 15 has given me the confidence and the professional discipline to walk into any room, no matter who is sitting in it, and do my job without self-consciousness or doubt. ↵

Joseph Ayre, previous BA Acting student

BA Acting

Loughton Campus

UCAS Code: W411

Why we're great

- Focus on Stanislavsky, Laban and a range of other techniques including Meisner and acting for screen
- Industry showcase
- Intensive skill training by leading UK and international faculty



The BA Acting course develops your individual talent, imagination and skill so that you graduate as a creative, proactive and collaborative practitioner ready for a career in the performing arts industries.

Our training in acting is about **exploration**. You will experience a wide range of rehearsal techniques – learning technical skills and applying them to many diverse acting challenges. **You will leave as a knowledgeable, professional actor with a creative approach and a solid process.**

YEAR 1

- A focus on **acting, voice, singing, movement and contextual studies**
- **Explore your own creativity** through work focussed on co-operation, responsiveness to others and the ensemble
- Develop the skills required for **objective self-assessment**, recreating through observation, research and improvisation
- Concentrate on **individual character study** and work on larger community-based projects with an emphasis on British realism
- The first year culminates in a unique, large-scale '**Living History**' project, in which you study, understand and live the lives of others through periods of conflict

YEAR 2

- A journey of maturation as **study moves from improvisation to text and from the examination of self to the exploration of character**
- Technical skills such as **movement, voice and singing are integrated into the work** and you start to build characters independently
- Multiple **screen and radio projects** throughout the year
- Opportunities to take responsibility for **your own creative work** and adapt to the differing demands of project and director
- Varying work from **nineteenth century naturalism**, to exploring the textual and psychological complexities of Shakespeare, plus learning to devise and break the fourth wall through projects such as **Brecht, Cabaret** and **Commedia dell'Arte**

YEAR 3

- Extend performance repertoire across a variety of **plays** and **work with industry professionals in recorded media**. All productions demand research, advanced skills and commitment, with theatre productions placing a particular emphasis on ensemble work and actor contribution
- Specialised **professional development workshops** to introduce the administrative aspects of this future profession: including audition technique, CV and letter writing, tax and self-employment, self-marketing and promotion
- Students undertake an **Industry Showcase** for an invited audience of influential agents, casting directors, film, voiceover, TV and theatre directors. East 15 continually liaises with industry professionals to ensure the format for the event accords with the changing landscape of the industry

AFTER EAST 15

Graduates of BA Acting regularly appear in stage, film, TV and radio productions throughout the world. Recent graduates have gone on to work with major companies such as the **National Theatre, Royal Shakespeare Company, Shakespeare's Globe, Manchester Royal Exchange, BBC, ITV and in the West End**. Students are consistently successful in the BBC Radio Drama Carleton Hobbs competition, which results in a professional contract. They have also been consistent winners of both The John Gielgud and The Laurence Olivier Bursaries. For the past nine years, BA Acting students have represented East 15 at the Globe Theatre's Sam Wanamaker Festival. East 15's BA Acting graduates are known, and often cast, for their boldness, versatility and professional commitment as actors.

BA Acting (International)

Loughton Campus

UCAS Code: W83A

Why we're great

- International cohort of students from across the world
- Intensive skill training by leading UK and international faculty
- Industry-ready intensive actor training by leading practitioners

BA Acting (International) provides a complete preparation for careers in acting, tailored specifically for international students.

Built on the methodologies that have helped establish East 15 as one of the most internationally respected drama training institutions in Europe, BA Acting (International) combines core actor training techniques with the skills required to create and produce bold, international work.

The course develops your talent, imagination and skill, so that you graduate as a knowledgeable, professional actor with a creative approach, solid process, and the unique experience of belonging to an international performance community formed through artistic collaboration during your time at East 15.

Our picturesque Loughton campus is located on the edge of East London and is just a short 30 minutes by underground train from the heart of the capital's West End theatre district.

Due to the unique focus of this course, EU and International students are encouraged to apply for BA Acting (International).

YEAR 1

- Focus on acting, voice, singing, movement and contextual studies
- Explore your own creativity through co-operation, responsiveness to others and the ensemble
- Work on objective self-assessment, development of observational skills and imagination, and re-creating through observation, research and improvisation
- The first year culminates in a unique, large-scale 'Living History' project, in which you study, understand and live the lives of others through periods of conflict

YEAR 2

- A journey of maturation as the focus moves from improvisation to text, and from the examination of self to the exploration of character
- Technical skills such as movement, voice and singing are integrated into the work and you start to build your characters independently
- Adapt to the differing demands of project and director and take responsibility for your own creative work
- Explore the textual and psychological complexities of Shakespeare and Elizabethan Verse Drama
- Develop acting skills required for film, television and radio work

YEAR 3

- Extend your performance repertoire through professional productions that demand research, advanced acting skills and full commitment
- Devise, produce and perform work for our unique 'IF' Festival. A multi-day event dedicated to original work by BA Acting (International) students which is live-streamed and open to industry guests
- Work with industry professionals to further develop your skills in recorded media, resulting in footage for your own showreel
- Specialised professional development workshops introduce you to the administrative aspects of your future profession: including audition technique, CV and letter writing, self-marketing and promotion
- Students undertake an Industry Showcase for an invited audience of influential agents, casting directors, film, voiceover, TV and theatre directors. East 15 continually liaises with industry professionals to ensure the format for the event accords with the changing landscape of the industry

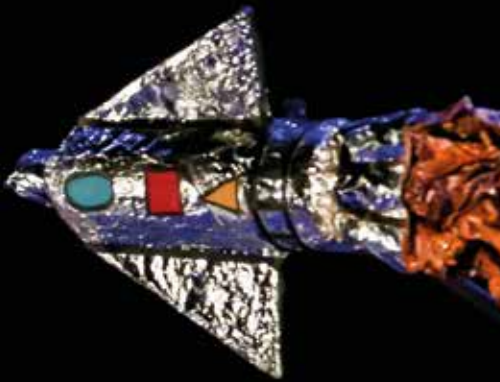
AFTER EAST 15

Graduates of East 15's BA Acting (International) course regularly appear in stage, film, TV and radio productions throughout the world including; Stranger Things (Netflix), Killing Eve (BBC America), Skam (Denmark), Kentän laidalla (Finland), Vrata do Vrata (Serbia) and many more. Our graduates are currently working professionally in the UK, USA, Lithuania, Greece, Netherlands, Norway, China, Canada, Poland, Sweden, Denmark and Portugal.

BA Acting & Community Theatre

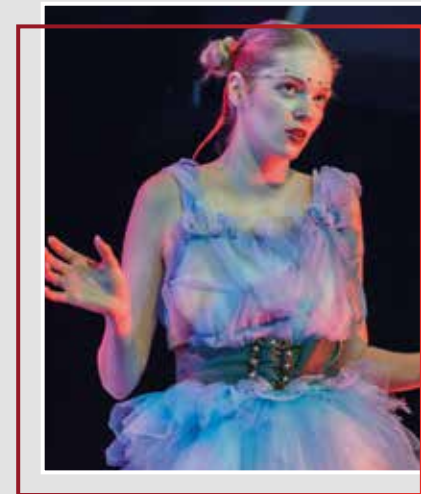
Southend Campus

UCAS Code: W496



Why we're great

- Intensive acting training by leading UK and international faculty
- Theatre making and creating skills
- Professional industry community placement during study



BA Acting & Community Theatre is a professional route into the world of community-focused theatre practice in which artists create theatre for, with, and about the communities in which they live.

In an **intensely practical, professionally oriented environment**, a broad range of acting, performance and community facilitation skills are developed through local projects and in partnership with leading industry organisations. You will **work extensively with communities and professionals throughout your training**, making for a seamless transition to a professional career in this field.

YEAR 1

- Focus on **acting technique, voice, singing, movement and theatre history** Explore self and responsiveness to others, develop observational skills and improvisation, and applied research
- First year work ranges from **individual character study through text analysis into scene study, verbatim and Shakespeare**
- The year culminates in East 15's unique '**Living History**' experience in which you study, understand and live the lives of others through a period of historical conflict

YEAR 2

- Acting and devising styles are extended by working with **practicing professional directors** to create **documentary theatre** based on real lives, devise and tour **participatory performances**, perform **object theatre** and understand and perform **Forum theatre**
- **Forge professional links** in the community theatre industry by undertaking an **internship with an established theatre company**
- Apply **workshop facilitation skills** in community host organisations
- Gain a thorough understanding of developing a theatre project from conception to delivery through devising, managing and performing in the annual '**Southend Street Theatre Festival**'

YEAR 3

- **Facilitate theatre projects** in areas such as health, social services and the justice system
- **Work on political theatre** and **site-specific** performances
- Extend your **music skills** in a cabaret
- Apply production, marketing and evaluation skills to **create your own, devised community play**
- Students undertake an **Industry Showcase** for an invited audience of influential agents, casting directors, theatre companies, and film, TV and theatre directors. East 15 continually liaises with industry professionals to ensure the format for the event accords with the changing landscape of the industry

AFTER EAST 15

Graduates work as actors, project leaders, directors, comedians and producers worldwide. Several companies formed by graduates are now well established, respected and funded in an increasingly competitive industry, with some employing recent graduates upon completion of their training.

This course doesn't only teach you to be an actor/actress but also equips you with a very handy bag of tricks ranging from circus skills to clowning to Commedia. 🎪

BA Acting & Contemporary Theatre

Loughton Campus

UCAS Code: W441

Why we're great

- Intensive acting training
- Industry showcase
- Creation of independent Alumni theatre and production companies

BA Acting & Contemporary Theatre is renowned not only for its pioneering, highly influential training programme, but also as a creative hub that produces original, bold theatrical work.

This unique and highly challenging pathway is **dedicated to training multi-talented actors. We combine developing your skills as a performer with experimentation in European physical theatre, devising, creative writing, composition and cross-media art, allowing you to expand into roles such as actor/musician, actor/writer and actor/choreographer.**

The training is inspired by leading contemporary international companies such as Complicite, the Schaubühe and the Wooster Group.

Our philosophy sees the actor as an **independent, inventive and entrepreneurial 'artist'**, and gives you the confidence and the competencies necessary to **realise your artistic inclinations.**

YEAR 1

- **Work alongside peers on the parallel BA Acting courses**, following the traditional East 15 training and **focus on the development of methodical characterisation work**
- **Realise your neutral starting point** as part of rehearsal process and preparation
- Develop your **core skills** with regular classes in **voice, singing, movement and research**

YEAR 2

- **Exploration of form and style.** Experiment with physical expressionism, contemporary and classical text, Commedia Dell'Arte, the theatrical clown, script writing, devising, music and parody
- Explore the relationship between **film and theatre** as well as **theatre as a tool for social change**
- **Construct original works** including an expressionist piece, physical comedy show and short film

YEAR 3

- Led by **visiting practitioners** from the industry, **develop ideas** and produce your own work including new plays, burlesque and short films
- Prepare for your post-training career with **professional development classes** in forming companies as well as casting exercises
- **Stage original work in the public arena**
- Students undertake an **Industry Showcase** for an invited audience of influential agents, casting directors, film, voiceover, TV and theatre directors. East 15 continually liaises with industry professionals to ensure the format for the event accords with the changing landscape of the industry

AFTER EAST 15

Alumni of the BA Acting and Contemporary Theatre course are participating in the industry not only as actors in theatre, film and TV, but also by staging their own work to audiences worldwide. Recent graduates have gone on to work with major companies such as the **National Theatre, Complicite, Cirque Du Soleil, The Globe, Frantic Assembly, BBC and ITV.**

A highlight of the graduate year is the acclaimed **'Debut Festival', a unique platform dedicated to staging new work written, directed, produced and performed by students.** Many works have transferred to professional production in Britain and abroad, winning awards such as the **Edinburgh Comedy Award, The Stage Best Ensemble, Scotsman Fringe First, Best New Musical** and **BFI Best Short Film.**

In its short history, the course has shaped a number of exciting new practitioners including film and TV actors **Lily Newmark** and **Adam El-Hagar**, writers **Charlotte Josephine** and **Somalia Seaton**, directors **Bryony Shanahan** and **Jesse Briton**, as well as major theatre companies such as **Fat Rascal** and **Police Cops.**

BA Acting & Stage Combat

Southend Campus

UCAS Code: W412

Why we're great

- Advanced skills in multiple forms of stage combat
- Intensive acting skill training by leading UK and international faculty
- Acting for camera

Unique in both the UK and the world, BA Acting & Stage Combat provides a professional, vocational training in stage combat and performance.

This course offers a distinct programme of **comprehensive actor training** alongside the development of **advanced physical skills**.

It enables you to develop a variety of **physical performance skills** that combine discipline, focus and emotional connection. These include, but are not limited to, training in **martial arts, gymnastics and multiple theatrical weapon systems**.

Applicants must be able to face the strenuous physical demands of this course, which is ideal if you have a physical background and want to develop your skills in a creative context **using your whole body to express character and story**.

Students prepare to follow a career path in **theatre, film, television and performance capture** where they may choose to become **actors, action performers or action directors, movement specialists** or continue their training to become **instructors in related fields**.

YEAR 1

- Acquire and practice skills in numerous **theatrical weapon systems**
- Train in **physical skills** such as **martial arts, contact improvisation** and **gymnastics**
- Develop **acting techniques** working from the East 15 philosophy, which is rooted in **Stanislavski principles**, character work and the creation of a **fictitious yet truthful world**
- Experience methods of acting from the traditional **inside-outside methodology**, as well as exploring **outside-in approaches**
- Traditional performance training is supplemented with **voice, movement, Commedia dell'Arte, devising** and **contextual studies**

YEAR 2

- Skills such as **voice, singing**, and **movement for actors** continue to be developed
- Discover different **methods of rehearsal** and further exploration into the scenic unit from a choreographic standpoint
- Introduce **film and screen work**
- Explore **advanced weapons systems** and continue training in **martial arts**
- Continue **gymnastics training** alongside principles of **acrobatics, tumbling** as well as **social dance**
- Core skills training is integrated into performance and refined through projects in **Shakespeare, animal studies** and **devised work**. In the final term, students have the opportunity to apply their skills in a professional performance environment
- All work is supported with classes in contextual studies covering **20th Century Performance** and the **History of Fights on Film**

YEAR 3

- Perform in a number of **public productions**, including text-based performances and a devised show
- Harness and develop your skills through further study of stage combat in performance - looking specifically at **choreography and fights for film**
- Continue **on-screen work** by performing in scenes for camera
- Create your own devised work through a graduation project
- **Prepare for the professional arena** with sessions in audition technique, personal management skills and the process of production preparation
- Students undertake an **Industry Showcase** for an invited audience of influential agents, casting directors, film, motion capture, TV and theatre directors. East 15 continually liaises with industry professionals to ensure the format for the event accords with the changing landscape of the industry

AFTER EAST 15

Over the years, a number of East 15 graduates have gone on to become **leading actors, fight directors** and **stunt and specialist performers**. This work extends from performing and choreographing staged fights on

film, television, in the theatre, opera and ballet, to re-enactments of historic battles, mechanical costume operating work for films as well as motion capture and green screen performance for the film and games industries.

BA Physical Theatre

Southend Campus

UCAS Code: W494



Why we're great

- Intensive acting training
- Aerial circus and puppetry training in specialist facilities
- Opportunity to develop individual and ensemble performances

Our BA Physical Theatre course is for actors who want to specialise in a world of physical and visual performance beyond traditional theatre and television.

We combine dynamic, exciting **acting training** with **devised and ensemble work**, offering all you would expect from a **traditional British drama school** coupled with **modern European performance methodologies**.

We are looking for actors and performance makers who are passionate about **physical performance**, creating new work and re-imagining traditional text whilst working in parallel with the traditional intellectual approach to acting.



YEAR 1

- Develop fundamental **voice, movement** and **singing techniques**
- **Focus on acting**, improvisation, Poor Theatre, devising, mask, mime, bouffon, acrobatics and contextual studies
- Work towards **classroom-based performance** in contemporary scenework, Poor Theatre, narrative & story theatre, mime and expressive mask
- **Present your own devised work** to peers through East 15's unique 'Theatre Café'

YEAR 2

- **Extend and build on the skills developed through first year**
- Core acting, voice, movement and singing classes continue, with the addition of more technically demanding subjects, such as **aerial circus, object theatre & puppetry, Commedia Del Arte, melodrama** and **acting technique**
- Technical skills work results in **two major classroom-based performance projects** per term

YEAR 3

- A focus on **professional preparation and performance**, including **industry-led employment talks and workshops**
- Core classes continue alongside **training in acting for screen**, which includes filming material that can be used in a **professional Showreel**
- Work with **Industry professionals** on a number of **full productions** in our state-of-the-art theatre, including an ensemble devised performance, a scripted play and a self-created small group devised performance. Since 2016, we have collaborated with the artist-led international theatre company, '**David Glass Ensemble**' to create shows that can be professionalised and taken beyond East 15
- Students undertake an **Industry Showcase** for an invited audience of influential agents, casting directors, film, motion capture, TV and theatre directors. East 15 continually liaises with industry professionals to ensure the format for the event accords with the changing landscape of the industry

AFTER EAST 15

In addition to working as actors and performers on **stage, film** and **television** in the UK and across the world, BA Physical Theatre graduates have worked as **puppeteers, aerial specialists, street and clown performers**, and have set up their own theatre companies creating and touring new work including the award winning 'Outbound Project', 'Ditto', 'Moth Physical Theatre' and 'Project Lockout'.

Graduates are currently performing in '**Harry Potter and the Cursed Child**', '**Life of Pi**', '**War Horse**' and '**A Comedy About a Bank Robbery**' and work with companies such as the Royal Shakespeare Company, the National Theatre, The Globe, West Yorkshire Playhouse, Told By an Idiot, Improbable, Les Enfants Terribles, Tangled Feet, Tall Stories, Graeae, La Fura Dels Baus, Theatre Royal – Stratford, the Barbican, Contact Theatre and the National Theatre of Scotland.

BA World Performance

Southend Campus

UCAS Code: W495

Why we're great

- Practical skills in global performance techniques
- Visiting international practitioners
- Opportunities for study overseas

BA World Performance is a unique, creative and challenging course that offers an intense training in western and non-western acting techniques, performance and devising skills, and the advanced study of global theatre traditions.

You will develop the tools required to become both a **performer and theatre maker**, able to work in many fields, anywhere in the world.

Throughout the course, you **study voice, movement, dance-drama, clowning, masks, storytelling, world music, singing, global performance techniques and a variety of acting styles**. You devise, create and perform projects reflecting the range of influences and styles encountered during your studies, while simultaneously developing skills in **media, writing and directing**. There is also an opportunity to **study overseas**, allowing the chance to **fully immerse yourself in the performance culture of another country**.

YEAR 1

- A **physical training** focused on the core skills required for engaging with world performance techniques as well as **key academic tasks** of assimilating and recording information and original research
- Discover the role of **music in world performance**, allowing you to engage from the outset with a range of cultural influences, **experiment with your own performance interests** and abilities, and broaden your knowledge of different cultural contexts of performance
- Gain an understanding of **Western performance practices and techniques** alongside and in relation to performance traditions from elsewhere in the world, preparing you for the more intensive, multicultural performance training you will experience in Year 2

YEAR 2

- Work centres on a set of case studies that allow you to **gain and demonstrate a broad base of knowledge across different traditions, approaches and issues in world performance**, whilst simultaneously developing and applying a significant level of specific **performance skill**
- Work intensively with **visiting practitioners** in a non-Western or intercultural performance form to produce and **perform a major theatre piece**
- **Increase competence and confidence as an independent practice-based researcher**, in western and non-western forms

YEAR 3

- Continue to broaden your perception as a **performance artist**, able to connect the learned techniques and approaches to your own practical experience and future professional career
- Focus on a series of **major independent group performance projects** through full-scale theatre productions, in which you have increasing autonomy and freedom to pursue your own aesthetic, intellectual and professional priorities
- Work in a collaborative environment with the aim of evolving a **professional practice** connected to a global perception of the theatre and performance industry in the UK and abroad, supported by teaching in organisational and entrepreneurial skills and by **developing your own unique professional and artistic vision**

AFTER EAST 15

Graduating students will be equipped not only as **actors and performers**, but will also possess the skills to develop careers as **directors, facilitators, producers and researchers**. They also hold a particular knowledge of different cultures that will prepare them for working anywhere in the world.

BA Stage & Production Management

Loughton Campus

UCAS Code: DKAS

Why we're great

- Professional industry placement during study
- Immersion in full production work from Year One onward
- Introduction to sound, lights and costume skills



BA Stage & Production Management is a practical-based professional training that prepares you for careers in a range of production and technical roles in theatre, events and related creative industries.

We **emphasise learning through practice** and you are part of a **creative production team** from early in the course. Based at our Loughton Campus, our proximity to London means you will be able to keep up-to-date with the latest technical innovations in one of the world's greatest theatre capitals.

YEAR 1

- Gain a range of core **stage management** and **technical theatre related skills** whilst working as part of East 15's production crew on professional productions at our in-house theatre
- Experience will include practical roles within; **lighting, sound, set design, costume, prop making, construction, stagecraft, stage and event management and training in specialist software pertaining to technical theatre roles**
- Students also undertake a **design project** with professional directors and designers to support and enhance their own work

YEAR 2

- **Begin to take on more responsibility for productions**, developing managerial and organisational skills whilst also developing increased experience of stage management and technical theatre skills
- Become responsible for production budgets and the collaboration with **professional directors and designers**

YEAR 3

- Assume senior management positions in stage and production management, **working at a professional level** and taking responsibility for the organisational and financial aspects of all public productions in a number of different venues **both on Campus and in central London**
- Graduate year students also complete a **professional industry-based work placement** during their final year of study

AFTER EAST 15

In addition to the widespread opportunities offered in the stage, film and television industry, there is huge demand across the events sector for production staff at festivals, concerts, exhibitions, sporting events and large scale outdoor events. Students often gain employment through successful work placements. Alumni have previously worked in production and technical roles at leading British performance venues such as **The National, RSC, and Northern Ballet**. We also have graduates working at the BBC, on **Game of Thrones** and **international theatres in Dubai and China** as well as **international tours** and **theme parks**.

BA Creative Producing (Theatre & Short Film)

Southend Campus

UCAS Code: W900

Why we're great

- Development of business and entrepreneurial skills in a creative environment
- Understanding of how to develop artistic projects into viable ventures
- Introduction to stage, screen and live event production processes

BA Creative Producing (Theatre & Short Film) is a full-time, industry-focused training aimed at entrepreneurial artists with an interest in creating, producing, administrating and promoting theatre and film.

This three-year **practical course** draws together the broad disciplines of theatre and film (such as writing for performance, lighting & sound, theatre directing & directing for camera, screenwriting, film editing, location management, dramaturgy, and digital set design) with business-focused aspects of the creative arts and associated industries (including marketing, web-design, social media, fundraising, and arts management). **It prepares you for a career in the creative industries working as producers and facilitators**, and develops transferable skills in communication, presentation, administration, leadership and critical analysis.

Based at our Southend Campus, you will have direct access to our state-of-the-art Clifftown Theatre and the opportunity to **work alongside fellow East 15 students studying on our actor training programmes**.

YEAR 1

- Learn the **fundamental elements** of producing theatre and film
- Gain an understanding of **lighting and sound** for performance
- Discover how to **turn an artistic endeavour into a feasible, marketable product**
- Work **behind the camera** to make short videos that can exist on their own as a narrative or support larger work as marketing material
- Develop requisite **research skills required for the working world** and understand the historical and cultural context to arts practice

YEAR 2

- Further develop your skills acquired in Year 1 and **learn new facets of the producing role** by focusing on more specific tasks across media, theatre and film production
- Develop your understanding of the skills required to **write for film**
- **Develop your understanding** of location management, fundraising, preparing grant proposals, touring a production, and filming live events
- Explore the role and practice of the director and dramaturg in **theatre and film**

YEAR 3

- The third year has one core unit, a written proposal, in which you **plan a project** that you could feasibly achieve in the future
- Alongside this, there are opportunities to **practically engage with vocational pathways**, for example, **film production, theatre producing, writing for screen or performance**, etc.

AFTER EAST 15

The UK's creative industries are now worth over £84 billion to the UK economy. The BA Creative Producing course develops your capacity to instigate projects across the digital, stage and screen sectors. **Industry specialists and professional experts work with you throughout the degree to develop your employability**. Students have opportunities for workplace learning, and are encouraged to develop their professional profile in preparation for careers as freelance producers working as part of a creative team, and for roles across theatre, media and film such as researchers, producers, editors, writers, and managers.



Certificate of Higher Education in Theatre Arts

Loughton & Southend Campuses

UCAS Code: W410

Why we're great

- One year intensive acting skills development
- Audition technique coaching
- Preparation for advanced acting training

This course provides a foundation in acting and can prepare you for further study, either at East 15 or at other conservatoire drama schools.

The intention is to **help create actors** who will have an intellectual as well as a vocational life in the theatre, introducing you to the concepts and mechanics behind each.

The Certificate of Higher Education in Theatre Arts is a **highly focused exploration of acting techniques** and aims to introduce you to the context that gives each theatrical era its distinctive identity. This includes (on a practical level) movement, music, improvisational skills and acting. Overall, it is an **intensively practical programme**.

Throughout the three terms, students undertake a number of compulsory modules. These cover **audition technique, movement, voice and singing**. During the first two terms at the Southend Campus, you are also introduced to acting courses that specialise in **Stage Combat, Physical Theatre, Community Theatre** and **World Performance**.



TERM 1

- A focus on **acting, voice, singing and movement studies**
- Explore imaginatively through various means of communication and learn about the roots of theatre practice
- Begin to **study yourself** in the same way you will learn to study a character, deepening your understanding of what it means to be human
- Work on **audition technique**
- The term culminates in an assessed **studio-based performance** to a small invited audience of staff and students

TERM 2

- Focus on **heightened, poetic and classical texts** and their characters
- Begin to establish approaches to **textual analysis** and the use of improvisation
- Again, the term culminates in an assessed **studio-based performance** to a small invited audience of staff and students

TERM 3

- Bring together all of the skills and experience developed throughout the course
- The course then culminates in **performances at our Campus theatre spaces**

AFTER EAST 15

During the year, students may **audition for places on one of the BA courses at East 15**. Many students are also accepted at other drama schools or at university drama departments. Students will be helped to **choose and prepare scenes for audition purposes**.

Applying for Undergraduate Courses

Students who wish to be considered for a place on an undergraduate programme at East 15 will need to apply through both the East 15 Direct Application Form which can be found on our website:

www.east15.ac.uk/undergraduate/applying-to-east-15

and the online APPLY system organised by UCAS (the Universities and Colleges Admissions Service – www.ucas.com).

Students only need to enter one choice on their UCAS application, but are able to apply for up to 3 courses on the East 15 direct application form.

If you are **not** intending to enter UCAS at all, you can **still apply** to East 15 **directly** and should miss out the UCAS step. Please enter “DirectApp” in the ‘UCAS number’ box on our Direct Application Form.

There is no upper age limit for applications, although applicants must hold academic qualifications equivalent to the entry requirements for any chosen course/s or provide

evidence of suitability for study (for example, completion of an Access course, Open University qualification or relevant work-based experience).

Please note that applicants who are engaged in full-time education when applying to East 15 and are given an offer following audition/interview, will need to obtain a reference from their current school, college or university. Applicants who are no longer in full-time education should try and obtain a reference from their previous educational establishment. If this is from more than three years ago a reference from a current employer would be appropriate.

Referees should be able to comment on an applicant’s attitude to work and/or study, reliability, enthusiasm, relevant interests, time management and suitability for the course.

References are not required prior to application and audition/interview.

Applicants are required to pay a non-refundable audition fee of £55. Details of the audition process and the ‘terms & conditions’ for the audition fee are available on our [website](#).

We believe in fair access to training and therefore provide free auditions to applicants from low-income households. Further information regarding eligibility for our **Audition Fee Waiver Scheme** can be found here:

www.east15.ac.uk/undergraduate/applying-to-east-15

Students applying for **BA Stage & Production Management** and **BA Creative Producing (Theatre & Short Film)** will be **interviewed**, not auditioned, and therefore do not have to pay an audition fee.

For further detailed information about our admissions process, links to our online application system and UCAS, please visit:

www.east15.ac.uk/undergraduate/applying-to-east-15

UCAS INFORMATION

Institution Name: Essex

Institution Code: E70

Campus Code: L for Loughton
S for Southend

UNDERGRADUATE ENTRY REQUIREMENTS

BA ACTING

Campus Code: L
UCAS Code: W411

Must be successful at audition and achieve CDD at A-level or the equivalent in UCAS tariff points, to include 2 full A-levels. In addition, all applicants require GCSE English at grade C or above (or equivalent).

BA ACTING (INTERNATIONAL)

Campus Code: L
UCAS Code: W83A

Must be successful at audition and achieve CDD at A-level or the equivalent in UCAS tariff points, to include 2 full A-levels. In addition, all applicants require GCSE English at grade C or above (or equivalent).

BA ACTING & COMMUNITY THEATRE

Campus Code: S
UCAS Code: W496

Must be successful at audition, and achieve CDD at A-level or the equivalent in UCAS tariff points, to include 2 full A-levels. In addition, all applicants require GCSE English at grade C or above (or equivalent).

It is also a requirement that all students on the BA Acting & Community Theatre course are required to undertake an enhanced DBS check because they will come into contact with children and/or vulnerable adults through a work placement undertaken as part of their course. DBS checks must be completed prior to commencement of the relevant work placement or activity. Students are required to declare a criminal record at the time of applying for the course and/or prior to completing a DBS check application. A student with a DBS disclosure certificate containing details of a criminal record will be referred to the University’s DBS Review Panel who will determine whether or not the student can be admitted to the course or permitted to continue on the course.

BA ACTING & CONTEMPORARY THEATRE

Campus Code: L
UCAS Code: W441

Must be successful at audition, and achieve CDD at A-level or the equivalent in UCAS tariff points, to include 2 full A-levels. In addition, all applicants require GCSE English at grade C or above (or equivalent).

BA ACTING & STAGE COMBAT

Campus Code: S
UCAS Code: W412

Must be successful at audition, and achieve CDD at A-level or the equivalent in UCAS tariff points, to include 2 full A-levels. In addition all applicants require GCSE English at grade C or above (or equivalent).

BA PHYSICAL THEATRE

Campus Code: S
UCAS Code: W494

Must be successful at audition, and achieve CDD at A-level or the equivalent in UCAS tariff points, to include 2 full A-levels. In addition all applicants require GCSE English at grade C or above (or equivalent).

BA WORLD PERFORMANCE

Campus Code: S
UCAS Code: W495

Must be successful at audition, and achieve BBC at A-level, or the equivalent in UCAS tariff points, to include 2 full A-levels. In addition all applicants require GCSE English at grade C or above (or equivalent).

BA STAGE & PRODUCTION MANAGEMENT

Campus Code: L
UCAS Code: DKAS

Must be successful at interview, and achieve CDD at A-level or the equivalent in UCAS tariff points, to include 2 full A-levels. In addition all applicants require GCSE English at grade C or above (or equivalent).

BA CREATIVE PRODUCING (THEATRE & SHORT FILM)

Campus Code: S
UCAS Code: W900

Must be successful at interview, and achieve BBC at A-level, or the equivalent in UCAS tariff points, to include 2 full A-levels. In addition all applicants require GCSE English at grade C or above (or equivalent).

CERTIFICATE OF HIGHER EDUCATION IN THEATRE ARTS (CERT HE)

Campus Code: L or S
UCAS Code: W410

Must be successful at audition, and achieve A-level grade E or equivalent qualification. In addition all applicants require GCSE English at grade C or above (or equivalent).

ENGLISH LANGUAGE

Applicants with English as a second or other language may be asked to provide evidence of their ability to understand and express themselves in English for academic purposes. This is important to ensure that students derive full benefit from their studies and meet the Home Office Tier 4 visa requirements. Details of any additional requirements will be made clear to successful applicants within their offer.

Undergraduate Auditions



Auditions are required for all students undertaking degree or certificate schemes that involve acting. Applicants to our BA Stage & Production Management and BA Creative Producing (Theatre & Short Film) courses are required to complete an informal interview.

The East 15 audition process is very thorough and has been commended for the opportunity it provides for applicants to **demonstrate their full potential**. The audition lasts from **four to six hours** and includes opportunities to **ask questions and engage with staff and current students**.

Auditions and interviews generally take place at the campus where the programme is based, either the **Loughton Campus** or **Southend Campus**, however we do occasionally hold joint Campus auditions days in Loughton. We presently also hold **regional auditions** in Cardiff, Exeter, Leeds and Shrewsbury, and hope to expand our regional audition locations this coming year. Auditions run from **December through to June**. **Interviews can take place at any arranged time**.

The audition day starts with a general address to all applicants after which you will be allocated to a group and directed to a room to perform your first audition piece. You will then be asked to **perform your audition speeches in front of your group and at least one East 15 tutor**. Some students may be **recalled after lunch for a further audition, workshop and/or interview** if the tutors require more information in order to make their decision. Please note, if you are not recalled, this does not necessarily mean that you have been unsuccessful.

During your audition, you may receive **direction and suggestions on your performance** so you should listen closely to what you are being asked to do. **Through our suggestions, we are offering feedback on the work that we have seen**. We do not give feedback after the event, but if you listen attentively, you will gain insight and feedback during the audition.

International applicants may submit audition material via the web if they cannot attend an audition in the UK. Applicants wishing to submit **digital/online audition material** will have the opportunity to do so via our direct online application form.

East 15 also auditions internationally each year. Dates, venues and availability can be found on our website:

www.east15.ac.uk/how-to-apply/international-auditions

WHAT TO PREPARE

Candidates for all acting courses must prepare **two contrasting speeches** from the following categories (1 speech from each):

- A play by Shakespeare or another Elizabethan/Jacobean playwright, lasting no more than one and a half minutes.
- A contemporary (post 1990) play lasting no more than one and a half minutes.

Some of our courses also have **additional audition requirements**. Please check the below box and ensure you have prepped for all of your course choices.

Before selecting your pieces for audition, read the whole play and **be ready to talk about the characters and the action**.

- We may ask you to approach your text in a variety of new ways, including **improvisations or paraphrasing of classical text**.

- Be wary of selecting roles that are too removed from your playing age - **you will want to find a character that you can connect with, relate to and understand**. Your focus should be on inhabiting a character and expressing the thoughts and emotions through the text.
- Be cautious of choosing comical speeches that play more like a stand-up act. **Comedy is fine, but it should be rooted in character** and situation.
- Be wary of choosing a speech that requires an "accomplished" accent unlike your own - you will want to **focus on the actions and thoughts within the speech, not presenting an accent**.
- Please note that **we will not advise you on your choice of character or speech**, this selection is a **personal decision** and is part of the audition process.

ADDITIONAL AUDITION REQUIREMENTS

■ BA ACTING / BA ACTING (INTERNATIONAL) / CERTIFICATE OF HIGHER EDUCATION IN THEATRE ARTS (Cert HE)

We **may wish to see an additional speech** from you, so please have prepared a third speech from a published play, lasting **no more than two minutes**, that **contrasts** well with the contemporary (post 1990) speech. Applicants may also be asked to take part in a **group activity**.

■ BA ACTING & COMMUNITY THEATRE

We **may wish to see an additional speech** from you, so please have prepared a **third speech** from a published play or a piece you have devised or written yourself, lasting **no more than two minutes**.

■ BA ACTING & CONTEMPORARY THEATRE

We **may wish to see an additional speech** from you, so please have prepared a **third piece**, lasting no more than three minutes, that is **something you have created** (be it a piece of

writing, music, dance, poetry, film or visual art). If you require any AV equipment or props for your piece, you must bring these with you and be able to set it up and dismantle them quickly. Applicants may also be asked to take part in a **group activity**.

■ BA ACTING & STAGE COMBAT

You may be invited to take part in a **physical session**, during which we will be able to better assess your physical aptitude as performer. Please ensure you have **appropriate clothing and footwear**.

■ BA PHYSICAL THEATRE

We **may wish to see more from you**, so please have prepared a **third piece of self-devised physical theatre** that you feel demonstrates your skills in this area, lasting **no more than two minutes**. If you require any audio equipment or props for your piece, you must bring these with you and be able to set up and dismantle them quickly. Applicants may also take part in a **group physical activity**.

Money Matters – Undergraduate



UK STUDENTS

Taking out a loan can feel like a big financial commitment, so we want to make sure you know exactly how it works. The **UK Government provides UK students with a tuition fee loan**, meaning you do not need to pay tuition fees upfront or during your course.

If you are a UK student, you can also take out a **maintenance loan, which helps cover living expenses** while you are at university. You only start repaying your loan once your income reaches a certain level, and if your income drops below this, you'll stop making repayments – so you don't need to worry about not keeping up.

Our UK undergraduate tuition fees for academic year 2021-22 will be £9,250.

EU STUDENTS

Following the UK's withdrawal from the EU, the UK Government will no longer provide funding to EU nationals starting their course in academic year 2021-22.

The undergraduate fees for academic year 2021-22 for EU nationals are charged at the international fee rate of £16,850.

If you would like advice on whether you would be classified as an overseas student in relation to your tuition fees, contact our Undergraduate Admissions Office via email at: admit@essex.ac.uk

The University offers many **scholarships and bursaries**, as well as specific **EU Scholarships**, which you may be automatically eligible for. We also encourage you to research financial support offered in your home country. National grants or loans may be

provided by your government or local careers service.

INTERNATIONAL STUDENTS

Our fees for the academic year 2021-22 are £16,850.

If you would like advice on whether you would be classified as an **overseas student** in relation to your tuition fees, contact our **Undergraduate Admissions** Office via email at: admit@essex.ac.uk

The **UK Council for International Student Affairs** (UKCISA) can also give you advice and information on **fee statuses**. Visit their website for more information: www.ukcisa.org.uk

As part of the **visa application process**, you will be asked to produce evidence of your ability to pay tuition fees and to cover living expenses during the course. There is more information on the **University website** about the current **UK Home Office requirements** at: <https://www1.essex.ac.uk/immigration/>

PREVIOUS STUDY

If you have previously studied at a higher education institution, this may affect the amount of financial support available to you. To find out more about this, or if you have any other questions, contact our Student Information Team via e-mail at: askthehub@essex.ac.uk

COST OF LIVING

Beyond the academic fees you will pay for your programme, the other main costs are **living expenses**.



Where you choose to live will play a big part in determining how much money you will need while studying.

An **estimate of living costs** for a typical undergraduate student can be found at: <https://www1.essex.ac.uk/fees-and-funding/money/cost-living/>

These figures are intended as a guide and will vary depending on individual lifestyle and circumstances.

SCHOLARSHIPS AND BURSARIES

We offer **financial packages** to support students, including those from lower income households. Additional support for UK students includes bursaries for care leavers, students with refugee status, and students from lower income households studying on a year abroad, or doing an industrial or voluntary placement.

Use our **online scholarship finder** to search for funding opportunities at: <https://www1.essex.ac.uk/fees-and-funding/scholarship-finder/>

Postgraduate Study

East 15 currently offers the following courses for postgraduate students:

MA ACTING

MA OR MFA ACTING (INTERNATIONAL)

MA OR MFA THEATRE DIRECTING

MA ADVANCED PROFESSIONAL THEATRE PRACTICE

**PHD DRAMA & PERFORMANCE (PRACTICE AS RESEARCH)
OR PHD DRAMA & PERFORMANCE**



The training at East 15 went above and beyond anything I could have imagined, giving me the tools to confidently and safely move my actor-self out of the way to let the character come through. I am a firm believer that the more you put in; the more you get out of any experience. ↵

Nicole Palomba, previous MA Acting student

MA Acting

Loughton Campus

MA Acting is a challenging course that encourages the development of a personal methodology based upon East 15's unique practices.

On one level, MA Acting is a **thoroughly practical, highly intensive, vocational course**. On another level, it is a **thought-provoking, life-changing reflection on the function and art of the actor** – exploring techniques from some of Europe's most influential practitioners as well as innovative professional practice from the UK and internationally.

Develops intuitive and spontaneous practice rooted in research.

You will need **discipline and motivation to work at an advanced level**. Beyond these, the requirements are **abundant energy, insatiable curiosity and a robust sense of humour**. Some students may already possess a university degree (not necessarily in a related discipline) whilst others will have established themselves in other career paths and now seek to change the direction of their lives towards that of a **professional actor**.

This course also attracts professional actors who feel the need to reflect on their practice, extend their range and skills, refresh their creativity, increase their professional contacts and gain academic recognition.

Why we're great

- Industry-ready intensive actor training by leading practitioners
- Industry showcase
- Focus on Stanislavsky and Laban techniques



TERM 1

- Focussed classes in **movement, voice and singing**, as well as **contextual studies**
- **Development of an artistic practice** from an exploration of personal self, to that of the body in time and space and from there to the creation of character and the realisation of text
- **Acting classes** promote the development of intuitive, creative responses which are then framed by the introduction of **techniques to build character and play actions**
- Apply **technical voice and movement** work to the **context of an acting** exercise through showings of short naturalistic scenes
- Introduction to **actor-centric research**

TERM 2

- **Core skills** classes continue
- Intensive **Shakespeare** module which develops and strengthens the integration of **technical skills with acting technique**
- Experience East 15's renowned and distinctive '**Living History**' project - a long-form, non-performative **improvisation** in which the actor can, through rigorous research and a residential period away from the campus environment, **experience and identify with the practical and visceral realities, as well as the psychological and emotional attributes, of the character**
- **Devise** an ensemble studio performance and understand and realise what it is to make theatre and the realities of the industry by taking on stage management and production roles for this project
- Begin to focus on **acting for recorded media**

TERM 3

- Further develop your skills in acting for recorded media, resulting in material for your professional **showreel**
- Learn performance skills for **radio and microphone technique**
- Focus on the '**MA Project**', which consists of working in small groups on **self-generated productions**, where you are given independence and autonomy as company members. Final shows are performed in East 15's Corbett Theatre or in other venues, as appropriate
- The second half of term 3 sees a **production** of an **ensemble devised text-based play**

SHOWCASE

In September, students return for a short intensive rehearsal period in preparation for the **Industry Showcase** which is performed for an invited audience of influential agents, casting directors, film, TV and theatre directors. East 15 continually liaises with industry professionals to ensure the format for the event accords with the changing landscape of the industry.

AFTER EAST 15

On completion of the MA Acting programme, you are qualified as an actor and recognised as a graduate of East 15 training. You are **equipped to pursue acting careers in theatre, film, TV and radio**. You also have an understanding of how to create your own work, including how to form companies

and gain funding, as well as a variety of methodologies for developing your own artistic practice.

You are encouraged to remain in touch with the school, to watch the development of succeeding students and to benefit from informal support and mentoring as you continue in your career.



MA OR MFA Acting (International)

Loughton Campus

Why we're great

- Performance on the stage of the Globe theatre in London
- International cohort of students from across the world
- Intensive skill training by leading UK and international faculty
- East 15 is a fully accredited Drama UK school
- We give our actors and directors the chance to work together on collaborative projects
- Filmmaking and editing resources and extensive studio and performance spaces

MA or MFA Acting (International) is a full-time, professional and intensive training program designed specifically for international students.

The course emphasises the importance of the integration and mastery of a wide spectrum of **core acting skills**. This includes; acting classes, Laban, Feldenkrais, Somatic and Grotowski based movement classes, voice production, articulation, RP (Received Pronunciation), context and singing.

The training draws primarily on existing practice, the legacy of **Stanislavski**, and the unique methodologies and ethos of East 15 itself, which grew out of the techniques, beliefs and practice of one of the UK's most famous and historically influential theatre companies of the 20th Century, **Joan Littlewood's 'Theatre Workshop'**.

You will have the experience of working with an **international cohort of actors** from all parts of the world, with different cultural and historical perspectives, life experiences, and training, which will **enlighten, challenge, educate and inform you as an artist and human being**. Our teaching incorporates the intensive study of **Shakespeare**, and a **residency and performance at Shakespeare's Globe Theatre**.

We regard every actor as an individual and understand the need for different keys to unlock their capabilities as artists and human beings. We believe in **positivity, passion, professionalism, and creating a truly safe space in which you can learn and explore to reach your full potential**. You will have the physical and vocal skills and techniques combined with our unique and rigorous approach to all aspects of acting training to build truthful, three-

dimensional characters of emotional depth and veracity with sophisticated texts in different genres and styles. This training is a **holistic approach to building character and interpreting narrative**, ideal for any student whose interest lies in the craftsmanship of acting and performance.

You will become a **self-sufficient actor, in charge of your own process, and be able to work confidently with any director, in any genre or discipline of acting**.



The MA runs for 12 months and the MFA for 20 months.
MA and MFA students are combined for most of the first year.

FIRST YEAR (MA & MFA)

TERM 1

- **Focus on acting techniques** evolved from the Stanislavski tradition, employing extensive improvisational exercises to explore the core and heart of the approach to the acting training at East 15. This enables students from different traditions and approaches to identify and achieve a common language and experience as preparation for the subsequent training
- Develop your understanding of the meaning and mechanics of **Shakespeare's text** and study a range of analytical and experimental approaches to develop clarity, accuracy, and be able to inhabit the text truthfully
- The term concludes with a **two-week residency at Shakespeare's Globe** where you work with the Globe's own directors, text, movement, voice, dance, and stage combat experts and will **rehearse and perform one-hour ensemble versions of Shakespeare texts on the Globe stage**.

TERM 2

- With character and scene study, the focus shifts to a **realist approach**. Through our intensive, detailed approach to text analysis, research and improvisation, you will expand your ability to **bring character and situation to life**, and further develop the **depth of your process**. This module utilises realist scripts from Chekhov and Ibsen to Rattigan
- The second part of the term shifts the focus to **UK contemporary texts**. You extend your vocal, physical, and analytical skills in the creation of roles that reflect a current cultural context and perform in an ensemble production in a **studio performance**.

TERM 3

- You will perform in a **full-length play**, allowing you to create a complete role in a **public production** in East 15's Corbett Theatre, highlighting the graduating MA students. MFA students finish for the term after this performance.
- The MA students then work on **filmed showreel material** for an **'Online Industry Showcase'**, followed by writing workshops with a professional playwright, leading to a practical self-devised, live-streamed, solo theatre **performance in the Corbett Theatre** with accompanying dissertation, or students may choose to write a longer dissertation instead of the practical performance project.

SECOND YEAR (MFA ONLY)

This year focuses on working as an acting ensemble with outside professional theatre directors. These are public productions which showcase the students to the UK industry.

TERM 1

- **Writing workshops** with a professional playwright, leading to a **practical self-devised, live-streamed, solo theatre performance** in the Corbett Theatre with accompanying dissertation, or students may choose to **write a longer dissertation, instead of the practical performance project**
- **Public productions** of shows aimed at younger audiences in East 15's Corbett Theatre

TERM 2

- The ensemble performs in **public productions in a London theatre venue**
- Classes in **film, radio and voiceover** teach you the skills required for acting for camera and microphone technique, providing you with content for a **professional showreel, website and voice reel**
- You also have professional preparation in **audition technique** and practice, **self-taping, self-promotion and branding**

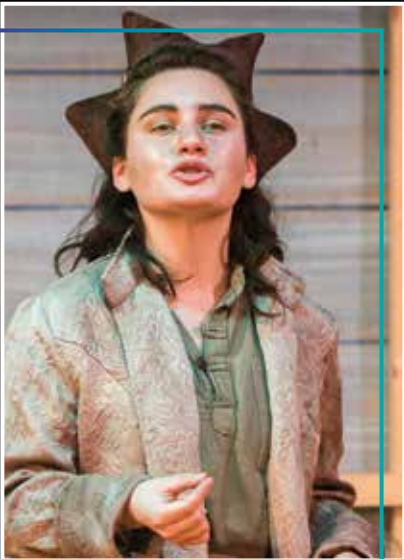
TERM 3

- The ensemble performs in **public productions** in either East 15's Corbett Theatre or a second Central London theatre venue

AFTER EAST 15

Graduates will have a comprehensive, professional training and a clear, embedded process that will enable them to pursue **professional careers in theatre and related professions** in an increasingly global industry. Graduates are working and winning awards as actors in the USA, China, Norway, South Korea and many

other countries. Many have formed their own very successful theatre companies, including LubDub Theatre in New York, and have written plays performed professionally in London, New York, LA, Oslo and Washington. MFA graduates have also gone on to teaching careers at Universities in North America, South Korea, and many other countries around the world.



MA OR MFA Theatre Directing

Loughton Campus

Why we're great

- Intensive practical training by leading UK professional directors
- Module options in Bali and Moscow
- Largest professional theatre directing programme in Europe

MA or MFA Theatre Directing is a unique and renowned course designed specifically for those who are already practising as or who wish to establish themselves as professional theatre directors.

It is open to emerging theatre directors and to students from the UK and to students from around the world. Our teaching is **driven by a wide range of leading directors and professional practitioners from the UK and overseas**. The programme benefits from its close ties with the London theatre world, which provides training expertise of the highest calibre and the professional networks that are vital to launching a Theatre Directing career.

The **MA runs for one year on a full-time basis and the MFA for 24 months**. For MA study, you take four modules during three consecutive terms, followed by a three-month period of independent study, at the end of which you present a Director's Production Workbook (or, alternatively, your MA Dissertation).

For the MFA, running over 24 months, you take eight modules during six consecutive terms, followed by independent study that results in a fully resourced practical project at one of East 15's theatre performance spaces or in a London theatre venue (or, alternatively, an MFA Dissertation).

Each year you have the opportunity to choose four modules out of the seven or eight different options that we offer.

The menu of modules rotates on a regular basis, but always covers a range of directorial practice that is unrivalled in its diversity and will include several of the following: Shakespeare, Contemporary British Drama, Comedy, Musical Theatre and Opera, Physical Theatre, Brecht, Techniques of Adaptation, Improvisation and Devising Techniques, Contemporary Irish Drama, Rehearsal Processes and Workshops, Collaboration with Designers, Attachment (Assistant Director), The Artistic Director, Commedia dell'Arte and Directing for Camera.

East 15 also runs some modules

overseas, most recently in **Moscow, Bali and Thailand** involving specialist practical study in an alternative cultural environment.

Overseas modules in Bali and Thailand include: World Theatre and Theatre of the East. In Moscow, at the GITIS Institute, modules include: Stanislavskian Acting Methodology, Meyerhold and Biomechanics, Michael Chekhov.

The course is full time however, some module choices enable periods of time away to pursue professional theatre work.

AFTER EAST 15

Former students now work as **professional freelance directors**, run companies and venues as Artistic Directors or teach directing in universities and conservatoires around the world.



Theatre Directing workshop with Mehmet Ergen

MA Advanced Professional Theatre Practice

(subject to validation)

Loughton Campus

This course is designed specifically for established professionals currently working or teaching in the performing arts.

Our unique programme allows you to **continue to work on professional projects whilst integrating your professional practice and knowledge with academic and practical learning.**

- Online study and peer discussion forum
- Intensive teaching blocks (2x two-week blocks in Terms 2 and 3)
- One-to-one online tutor support

The degree is delivered through a **combination of online study with intensive live workshops** and uses your existing professional and teaching practice as a medium for development and exploration. This **flexible approach** means that you can live abroad or **study with us alongside your personal or professional commitments** whilst developing your practice as a theatre practitioner, teacher, director, designer, dancer or interdisciplinary artist with a specific interest in theatre and performance.

Applicants must either have an **established professional profile** (including formal or informal training) in live performance; i.e. actors and other performers, directors, designers, stage and production managers, or hold a **Diploma from an accredited conservatoire** or hold a **BA degree and experience in a relevant field.**

TERM 1

- **Reflect on your previous experience** as a preparation for study and development planning
- Identify and respond critically to a range of theories relevant to contemporary performance practice and develop an individual appreciation of how they can **enhance and enrich your own practice**
- Locate your own **professional work** in the context of contemporary and recent practitioners in a variety of theatrical forms

TERM 2

- Based on ideas and processes explored in Term 1, collaborate with your cohort to **create and perform a short piece of original devised theatre or film.** Alternatively, you have the option to be assessed through a professional theatre project produced off-Campus, providing that you can submit documentary evidence
- Consider the professional skills and knowledge you can offer as a teacher and facilitator and translate your own creative practice into engaging and effective learning sessions

TERM 3

- Apply a range of the knowledge, skills and approaches explored during taught modules to **develop and present a substantial written or practical project**

AFTER EAST 15

On completion of the MA Professional Theatre Practice programme, you are **recognised as a graduate of East 15 conservatoire training**, equipped with the ability to **build on your existing professional knowledge** and **further identify and develop your skills** through research in a professional environment moving forward.

PhD Drama & Performance (Practice as Research) OR PhD Drama & Performance

Loughton & Southend Campuses

Undertaking PhD study gives you the opportunity to engage with an area of drama, theatre, or performance in depth and at an advanced level. East 15 Acting School, with its growing research profile and internationally recognised research quality is an obvious home for such investigation

At East 15, research degree students will undertake one of two paths of enquiry. The PhD in Drama and Performance is a conventional PhD whereby candidates are assessed via thesis and viva voce examination. For the PhD Drama and Performance (Practice as Research) course, candidates are assessed via practice as research, a thesis that contextualises and analyses the performance practice in relation to the research topic, and a viva voce examination. For guidance, areas of expected practice include theatre directing, dramaturgy, actor training, design (scenery, sound, lighting, costume), and performance art.

OUR EXPERT STAFF

Our staff undertake many forms of research including practice as research and text-based enquiry, and are experts in drawing connections between exploratory practice, advanced critical analysis and theoretical framing. We have extensive links with all sectors of the theatre industry and as one of the most international drama schools in the UK, we also have a range of established international connections.

Staff research specialisms include world performance, actor-training and audience reception. Our staff are undertaking research in areas such as movement and somatics in actor training, voice, immersive and participatory performance, intermedial performance, performance art, twentieth century avant-garde practice, intercultural training and practice, Balinese theatre, Brazilian theatre, Shakespeare and theatre directing.

SPECIALIST FACILITIES

As a highly competitive acting conservatoire, we are well equipped to cater for a range of activities and practices. Our cutting-edge facilities, resources and support for research, offered across three campuses (Southend, Loughton, Colchester) are world class. We are well placed to facilitate practice as research by virtue of our high-specification performance and rehearsal spaces, design studios, and infrastructure.

PhD students will be based at

Southend or Loughton depending on the location of their supervisor. However, all PhD students can arrange for access to the available facilities at both Loughton and Southend.

STUDY & SUBMISSION

During the first year of their PhD programme, candidates will be expected to undertake required skills training and to develop an in-depth plan and timetable for undertaking their research within a three-year period. Students will start to collect research material, define their methodology, and be able to contextualise their research in relation to existing literature and practice.

Before entry into the second year, candidates will have a Confirmation Board, which reviews the candidate's progress and determines whether the quality of research is at PhD level. After the student's candidature is confirmed, they will continue to undertake the body of their research investigation.

In the third-year, students should be working to complete all elements of their submission.

ASSESSMENT

PHD Drama & Performance:
60,000-80,000 word thesis and
viva voce examination.

**PHD Drama & Performance
(Practice as Research):**
Practice as research (50%),
30,000-40,000 word thesis (50%)
and viva voce examination.

Applying for Postgraduate Courses

All postgraduate applicants to East 15 must demonstrate their suitability for entry.

Postgraduate applicants are assessed on their **experience (both academic and practical) and potential for success**. It would be unlikely that someone under the age of 21 will have gained the requisite academic qualifications required for entry. There is **no upper age limit for applications**,

however, applicants will **need to hold academic qualifications equivalent to the entry requirements for their chosen course or provide evidence of their suitability for study**. To this end, we will assess your experience (both academic and practical) and your potential for success. As part of

your assessment, you will also need to **undertake an audition that has an element of physical activity**.

Applicants to **MA or MFA Theatre Directing** do not need to attend an audition but are required to attend an **interview in person or via Skype** (or similar).

POSTGRADUATE ENTRY REQUIREMENTS

MASTERS

MA ACTING

Successful live audition or digital audition (via Skype, YouTube or alternative online platform), plus a 2:1 honours degree in any discipline or equivalent or suitable previous experience.

MA or MFA ACTING (INTERNATIONAL)

Successful live audition or digital audition (via Skype, YouTube or alternative online platform), plus a 2:1 honours degree in any discipline or equivalent or suitable previous experience.

MA or MFA THEATRE DIRECTING

Successful written application, plus a 2:1 honours degree in any discipline or equivalent or suitable previous life experience. A CV or Resume (recommended) and a portfolio of work (optional) may be submitted as part of an online application. Candidates will also be invited for interview.

MA ADVANCED PROFESSIONAL THEATRE PRACTICE

Successful written application, plus an established professional profile (including formal or informal training) in live performance, for example: actors and other performers, directors, designers, stage and production managers (or a related profession) or a 2:2 BA degree in a relevant field and relevant professional experience or practitioners holding a Diploma from an FDS accredited conservatoire and relevant professional experience. Candidates will also be invited for interview.

ENGLISH LANGUAGE

Applicants with English as a second or other language **may be asked to provide evidence of their ability to understand and express themselves in English for academic purposes**. This is important to ensure that students derive full benefit from their studies and meet the Home Office Tier 4 visa requirements. Details of any additional requirements will be made clear to successful applicants within their offer.

YOUR POSTGRADUATE APPLICATION

All MA students must **complete the East 15 online application form**.

Applicants to postgraduate Acting courses (**excluding Theatre Directing**) are required to pay a non-refundable audition fee of £55. Details of the audition process and the 'terms & conditions' for the audition fee are available on our website.

Full details can be found here:

<https://www.east15.ac.uk/masters/applying-to-east-15>

All PhD applicants should submit an application directly to the University of Essex.

<https://www1.essex.ac.uk/pgapply>

PHD STUDY

PHD DRAMA & PERFORMANCE (PRACTICE AS RESEARCH) or PHD DRAMA & PERFORMANCE

You are required to have a 2:1 honours degree in any discipline, or international equivalent, and a Masters degree in Drama, Performance or a related field, or to have equivalent professional experience. A well-developed research proposal is also essential.

Applicants who do not hold the above qualifications will be considered on a case-by-case basis.

Postgraduate Auditions

Auditions are required for all students undertaking masters courses that involve acting. Auditions take place at our Loughton Campus between December and May.

MA ACTING AND MA OR MFA ACTING (INTERNATIONAL)

East 15 auditions each year at a host of international locations. As members of **URTA** we also attend their auditions across North America.

Information regarding dates, venues and availability can be found on our website: www.east15.ac.uk/how-to-apply/international-auditions.

International applicants may audition via an online link (e.g. YouTube/Vimeo) if they cannot attend an audition in the UK. Applicants can provide links to digital audition materials within their online application form which can be accessed via www.east15.ac.uk/masters/applying-to-east-15.

The audition day starts with a general address to all applicants after which you will be allocated to a group and directed to a room for your first audition piece. You will then be asked to **perform your audition speeches in front of your group and at least one East 15 tutor**.

During your audition, you may receive direction and suggestions on your performance so you should listen closely to what you are being asked to do. **Through our suggestions, we are offering feedback on the work that we have seen.** We do not give feedback after the event, but if you listen attentively, you will gain insight and feedback during the sessions.

Our audition process is very thorough, giving you the opportunity to demonstrate your full potential. **The audition lasts from four to six hours** and includes opportunities to ask questions and engage with staff and current students. Candidates for acting courses must prepare **two contrasting speeches** from the following categories (1 speech from each):

- A play by Shakespeare or another Elizabethan/Jacobean playwright, lasting no more than one and a half minutes.
- A contemporary (post 1990) play lasting no more than one and a half minutes.

Before selecting your pieces for audition, read the whole play and **be ready to talk about the characters and the action.**

- We may ask you to approach your text in a variety of new ways, including improvisations or paraphrasing of classical text.



- Be wary of selecting roles that are too removed from your playing age – **you will want to find a character that you can connect with, relate to and understand.** Your focus should be on inhabiting a character and presenting a speech.

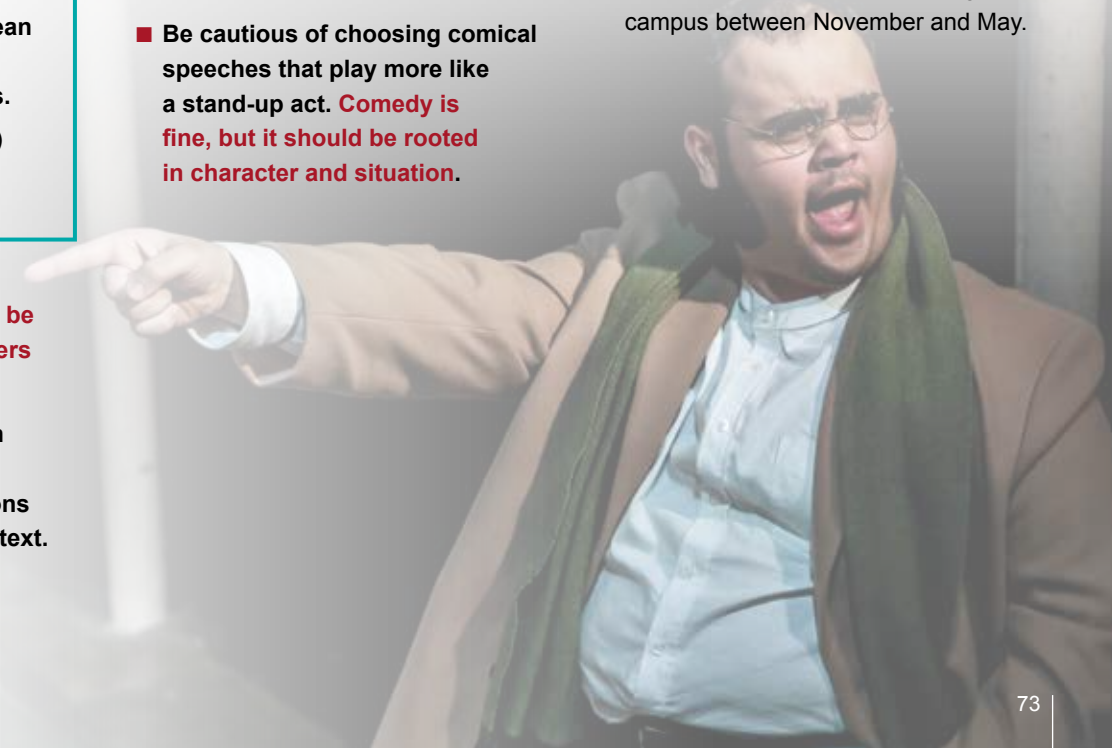
- Be cautious of choosing comical speeches that play more like a stand-up act. **Comedy is fine, but it should be rooted in character and situation.**

- Be wary of choosing a speech that requires an “accomplished” accent unlike your own – **you will want to focus on the actions and thoughts within the speech, not presenting and accent.**
- Please note that **we will not advise you on your choice of character or speech**, this selection is a personal decision and is part of the audition process.

MA OR MFA THEATRE DIRECTING / MA ADVANCED PROFESSIONAL THEATRE PRACTICE

Applicants will be assessed on the basis of their written application and will be called for interview or given a telephone or Skype interview.

Interviews take place at our Loughton campus between November and May.



Money Matters – Postgraduate



UK STUDENTS

Our UK tuition fees are between £13,990 and £15,930 for academic year 2021-22.

EU STUDENTS

Following the UK's withdrawal from the EU, the UK Government will no longer provide funding to EU nationals starting their course in academic year 2021-22.

The fees for academic year 2021-22 for EU nationals are charged at the international fee rate between £15,440 and £17,570.

If you would like advice on whether you would be classified as an overseas student in relation to your tuition fees, contact our Postgraduate Admissions Office via email at: pgadmit@essex.ac.uk

The University offers many **scholarships and bursaries**, as well as specific **EU Masters Scholarships**, which you may be automatically eligible for. We also encourage you to research financial support offered in your home country. National grants or loans may be provided by your government or local careers service.

INTERNATIONAL STUDENTS

Our fees for the academic year 2021-22 are between £15,440 and £17,570.

If you would like advice on whether you would be classified as an overseas student in relation to your tuition fees, contact our Undergraduate Admissions Office via email at: admit@essex.ac.uk

The UK Council for International Student Affairs (UKCISA) can also give you advice and information on fee statuses. Visit their website for more information: www.ukcisa.org.uk

As part of the visa application process, you will be asked to produce evidence of your ability to pay tuition fees and to cover living expenses during the course. There is more information on the University website about the current UK Home Office requirements at: <https://www1.essex.ac.uk/immigration/>

PAYMENT OF TUITION FEES

Your fees can be paid in full at the start of the academic year, or in three equal instalments in October, January and April. If you are a non-EEA student requiring our sponsorship for a Tier 4 visa application, you must pay your first instalment as a non-refundable deposit in order to be assigned your Confirmation of Acceptance for Studies (CAS), or show proof that you are being sponsored by a body recognised by our University.

STUDENT VISA REQUIREMENTS

As part of the visa application process, you'll be asked to produce evidence of



your ability to pay tuition fees and to cover living expenses. More information regarding the Tier 4 application can be found here:

https://www1.essex.ac.uk/immigration/apply_for_a_visa/tier4/

COST OF LIVING

Beyond the academic fees you will pay for your programme, the other main costs are **living expenses**. Where you choose to live will play a big part in determining how much money you will need while studying.

An **estimate of living costs** for a typical postgraduate student can be found at: <https://www.essex.ac.uk/student/money/cost-of-living>

The figures are intended as a guide and will vary depending on individual lifestyle and circumstances.

PG LOANS

If you are a UK student and looking to study a Masters degree, you may be entitled to a government funded loan. Course eligibility and residency criteria will apply. For more information visit:

<https://www1.essex.ac.uk/fees-and-funding/masters/loans/www.gov.uk/postgraduate-loan>

The UK Government will no longer provide PG loans to EU nationals starting their course from academic year 2021-22.

SCHOLARSHIPS

New postgraduate students who have accepted a place at East 15 will **automatically be sent details of scholarships and bursaries** with their offer letter. To find out more and to check your eligibility please visit:

<https://www1.essex.ac.uk/fees-and-funding/masters/scholarships/>

ALTERNATIVE SOURCES OF FUNDING

To help you navigate the world of alternative funding, we've taken out a subscription to The Alternative Guide to Postgraduate Funding Online. This vast database will give you information on alternative funding sources, including: studentships, charitable trusts and grants, private corporate sponsorship, research councils, learned societies and more. To access this resource, you will need to enter the following pin number when prompted: **2529**.

Website: www.postgraduate-funding.com/gateway

University of Essex

East 15 Acting School became part of the University of Essex on 1 September 2000. Subsequently, students at East 15 have also become University of Essex students and receive University of Essex degrees.

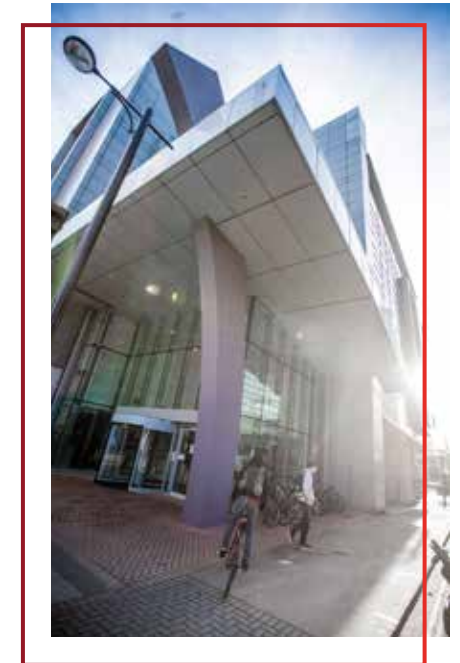
The University of Essex celebrated its 50th anniversary in 2014, and in those 50 years has become **one of the UK's leading academic institutions**. Essex is an **internationally-oriented, research-intensive university** with a commitment to excellence in research and research-led teaching, to the personal development of all its students, and to offering an outstanding campus-based student experience.

Essex is the most internationally diverse campus-based university in Britain, with **40 per cent of students coming from 135 different countries outside the UK**.

The University has more than 11,000 students at three campuses in Essex,

and partnerships with education institutions across the region. It offers a broad spread of subjects across **18 academic departments and schools**, with particular peaks of excellence in the social sciences and humanities.

The University's original campus is situated in an attractive 200-acre parkland estate on the outskirts of Britain's oldest recorded town, Colchester, whilst its newest campus is located in the heart of the county's most famous seaside town, Southend-on-Sea, on the south Essex coast. Both campuses are served by excellent transport links, with rail, road and air links close by and journey times to London being 70 and 50 minutes respectively.



For more information about the University of Essex, please contact:

ADMISSIONS OFFICE

University of Essex | Wivenhoe Park | Colchester | CO4 3SQ | UK

T: +44 (0) 1206 873666

E: admit@essex.ac.uk

W: www.essex.ac.uk



University of Essex

Important Information

ABOUT THIS PROSPECTUS

This prospectus has been prepared in Spring 2020 for courses available from September 2021. Although great care is taken in compiling this prospectus, it is for the general guidance of prospective students only.

East 15 Acting School cannot guarantee the provision of all courses and services advertised in the event of circumstances beyond its control and therefore reserves the right to make changes or cancel any course without notice, should this become necessary. The School cannot be held responsible for failure/delay in performing obligations caused by things beyond its reasonable control, such as fire, flood or industrial action. For the most up-to-date information, please contact East 15 directly.

The full Procedures, Rules and Regulations for the University of Essex

are set out in the Charter, Statutes and Ordinances and in the University Regulations, Policy and Procedures. Copies are available on request from the University. In accepting the offer of a place at the University, you consent to incorporation of this notice as a term of contract between you and the University.

QUALITY ASSURANCE

The Quality Assurance Agency (QAA) last undertook a Review of the University from 2-5 December 2014. This Review found that the University meets all expectations required of higher education providers, and commended the University's focus on improving the student learning experience.

A copy of the full report is available on the QAA website at:

www.qaa.ac.uk/reviews/reports

QUALITY ASSURANCE

East 15 Acting School is part of the University of Essex and is a member of both the Federation of Drama Schools and the University/Resident Theatre Association (URTA).



Loughton Campus

East 15 Acting School
Hatfields Campus | Rectory Lane
Loughton | IG10 3RY | UK
T: +44 (0)20 8508 5983

E: east15@essex.ac.uk
W: www.east15.ac.uk



Southend Campus

East 15 Acting School
Southend Campus | Elmer Approach
Southend-on-Sea | SS1 1LW | UK
T: +44 (0)1702 328200



EAST 15 PARTNERS

UK

Greenwich and Lewisham Young People's Theatre
King's Head Theatre
London Bubble
Regents Park Open Air Theatre
Shakespeare's Globe
Space Theatre

Erasmus

Institut del Teatre, ESAD (School of Dramatic Arts) Barcelona, Spain
National University of Theatre and Film I.L. Caragiale, Bucharest, Romania
Paris-Sorbonne University, France

International

Central Academy of Drama, Beijing
The Russian University of Theatre Arts (GITIS), Moscow, Russia
Indonesian Arts Institute (ISI), Bali, Indonesia
Nanjing University of the Arts, China
Nanyang Academy of Fine Arts (NAFA), Singapore
The Norwegian Acting Institute (NSKI), Oslo, Norway
Shanghai Theatre Academy, China
Srinakharinwirot University, Bangkok, Thailand



East 15 Acting School is part of the University of Essex.

Loughton Campus

East 15 Acting School | Hatfields Campus | Rectory Lane | Loughton IG10 3RY | UK

Telephone: +44 (0)20 8508 5983 | Fax: +44 (0)20 8508 7521

Southend Campus

East 15 Acting School | Southend Campus | Elmer Approach | Southend-on-Sea | SS1 1LW | UK

Telephone: +44 (0)1702 328200 | Fax: +44 (0)1702 328201

E-mail: east15@essex.ac.uk

Website: www.east15.ac.uk



University of Essex

