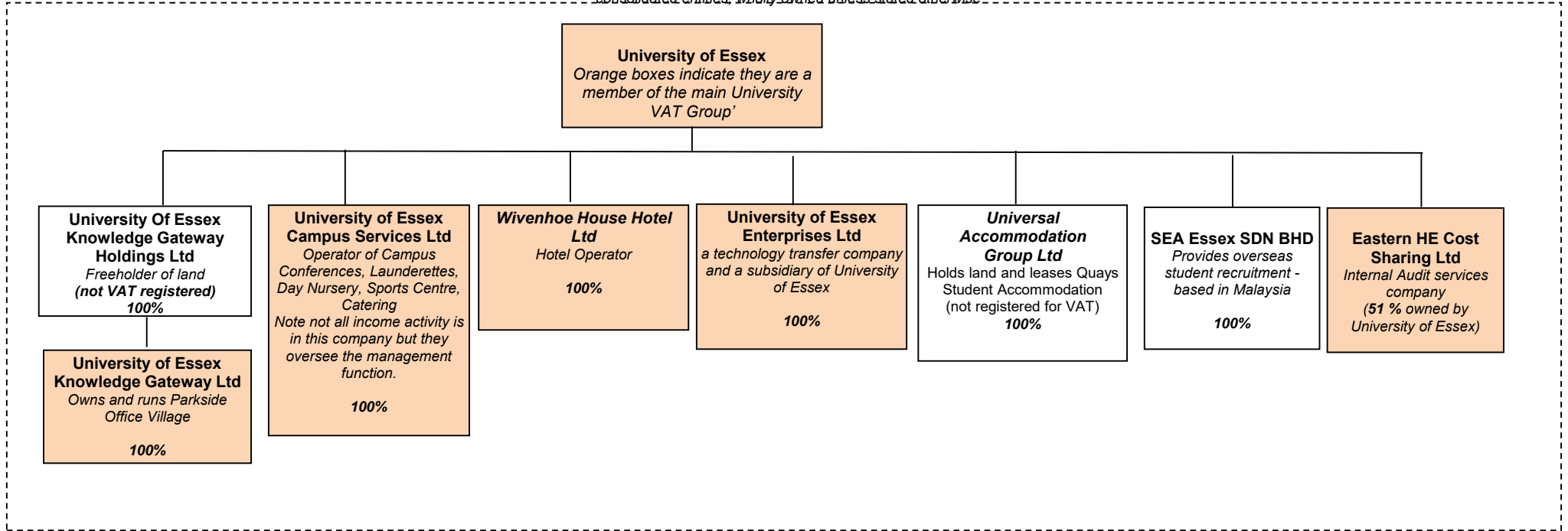


University of Essex Group of Companies

*consolidated entities, wholly owned unless stated otherwise*



**Connected, Non-Consolidated Entities**

**Southend-on-Sea Forum Management Ltd**  
Property management of the Forum (library and educational facility)  
(35.65 % owned by University of Essex)

Students' Union

**Dormant Companies**

East 15 Acting School Ltd

Cymblood Limited

University of Essex International College Limited

All 100%