



# A GUIDE TO THE UNDERGRADUATE RULES OF ASSESSMENT

This is only a guide to illustrate a typical route through a Three-Year degree for students first registered in Academic Year 2019-20. Some courses have different requirements so you may have a different route. The formal Rules of Assessment provide definitive information; always refer to them to be sure.

## This document covers:

- Framework for a typical Three-Year degree
- Reassessment opportunities in Year One
- Reassessment opportunities in Year Two
- Reassessment opportunities in the Final Year

## You should look at:

- The Rules of Assessment for your Year group
- The variations that apply to some courses
- Glossary of Terms to explain all the terminology
- The Principles and Framework

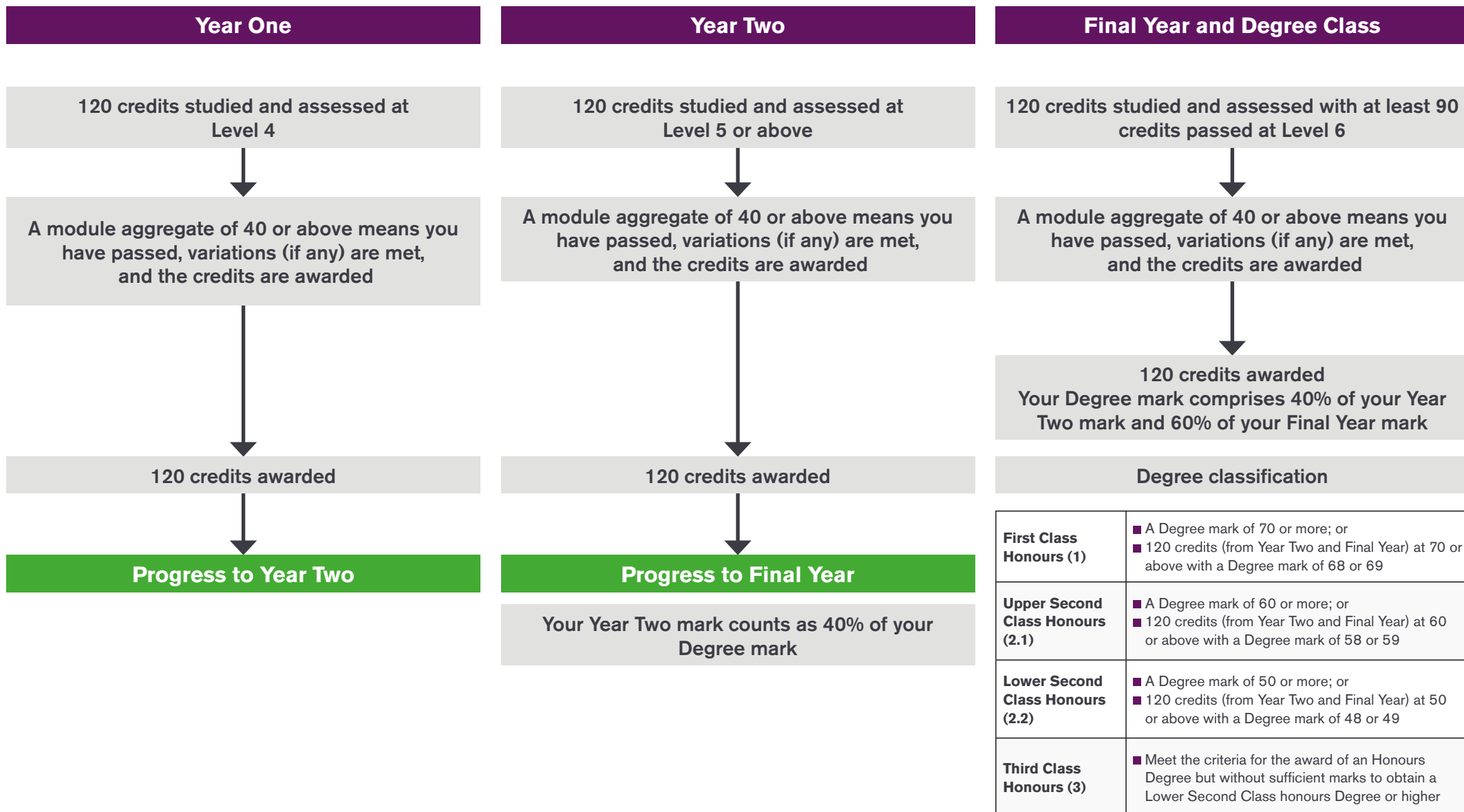
## Important stuff:

- You must pass at least 330 credits, with 90 or more at Level 6, to be awarded your degree. You must study 120 credits in each Year of your degree. You can only fail a maximum of 30 credits across your whole degree. None of them can be core modules.
- The pass mark is 40 for all modules. To pass the Year and progress to the next Year you must pass enough credits. Some courses have extra requirements that must be met. These are called variations.
- You must pass core modules in order to progress.
- If you have failed any modules after you have completed all your assessments and you have a Year mark of 20 or above, you will need to take reassessment before you can progress to the next Year of study.
- The Board of Examiners will offer you all the reassessment opportunities that are available to you. If you are a Tier 4 student your options for reassessment may be limited due to the Home Office rules and guidance.
- You are only allowed three attempts to pass an individual module. Failure to submit a unit of assessment or missing an exam for which you were entered will count as an attempt.
- Extenuating circumstances (ECs) may mean that you perform less well than expected or miss assessments. If you submit ECs and they are accepted as valid, the Board of Examiners may be able to offer you additional assessment opportunities in line with the Extenuating Circumstances Policy and guidelines.
- Your Degree mark is used to determine your Degree class. Your Year Two mark counts as 40% of your Degree mark and your Final Year mark counts as 60%.



# FRAMEWORK OF A TYPICAL THREE-YEAR UNDERGRADUATE DEGREE

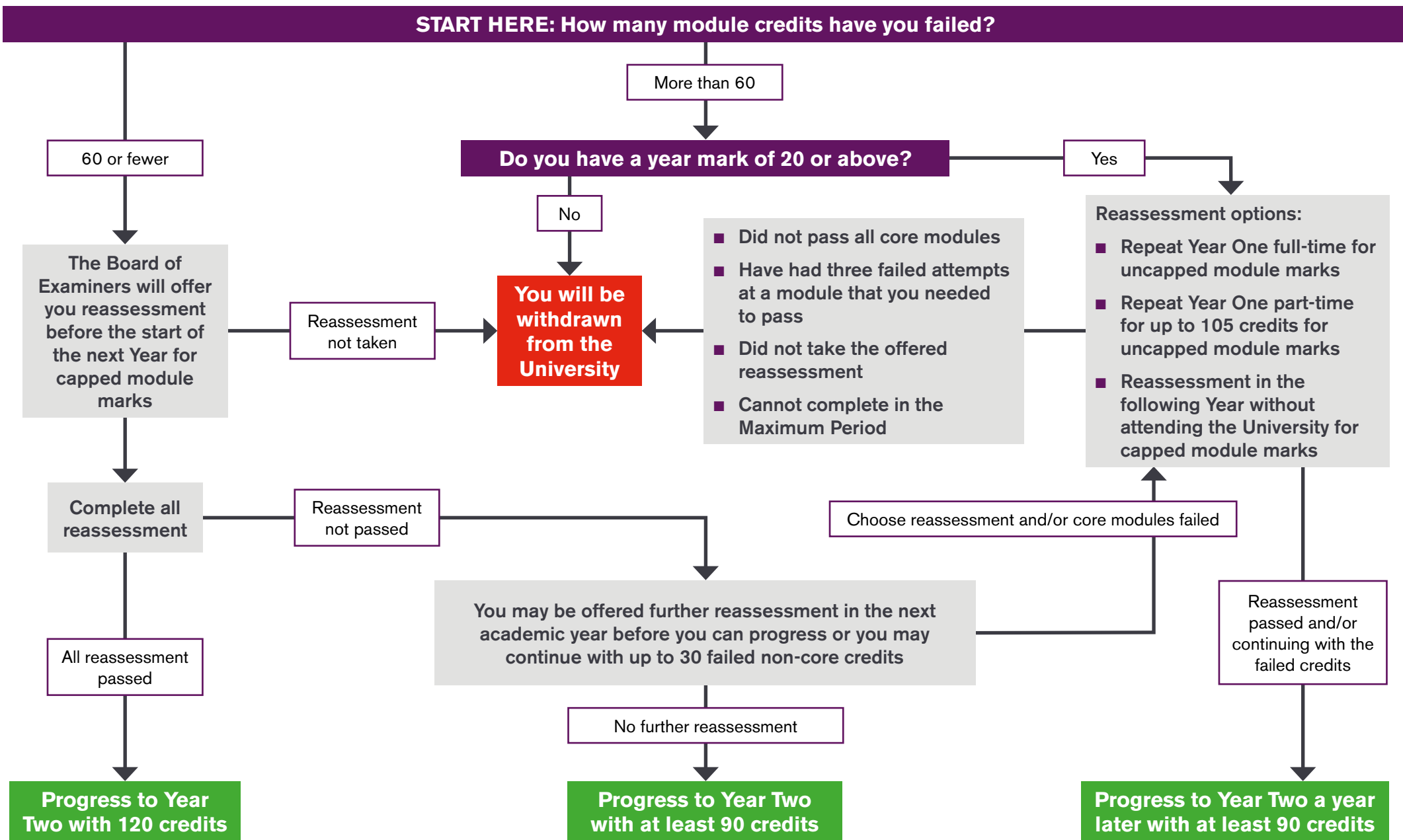
This is only a guide. The formal Rules of Assessment 2019-20 provide definitive information; always refer to them to be sure.





# REASSESSMENT OPPORTUNITIES IN YEAR ONE

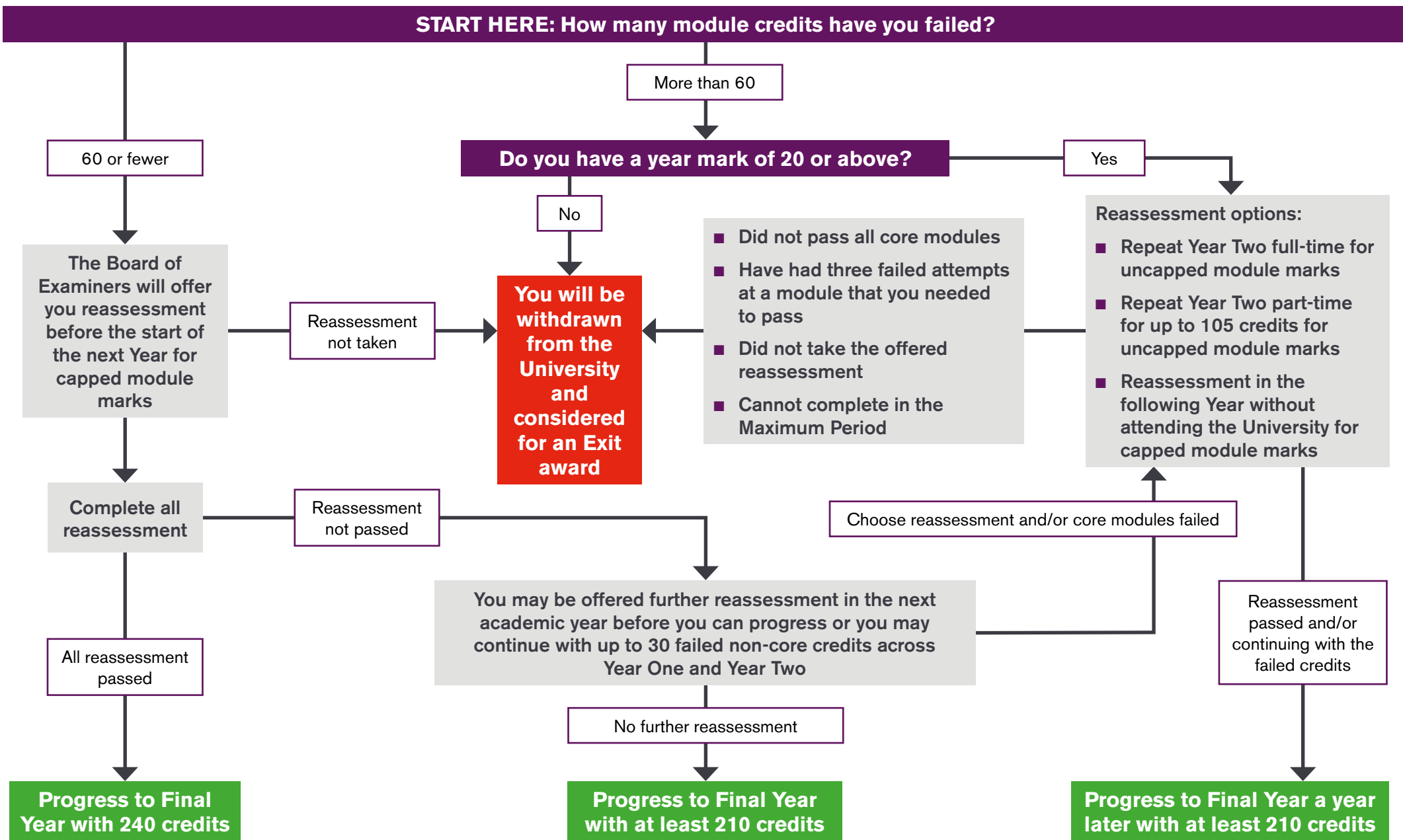
This is only a guide. The formal Rules of Assessment 2019-20 provide definitive information; always refer to them to be sure.





# REASSESSMENT OPPORTUNITIES IN YEAR TWO

This is only a guide. The formal Rules of Assessment 2019-20 provide definitive information; always refer to them to be sure.





# REASSESSMENT OPPORTUNITIES IN THE FINAL YEAR

This is only a guide. The formal Rules of Assessment 2019-20 provide definitive information; always refer to them to be sure.

