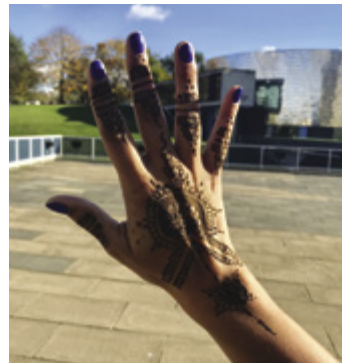
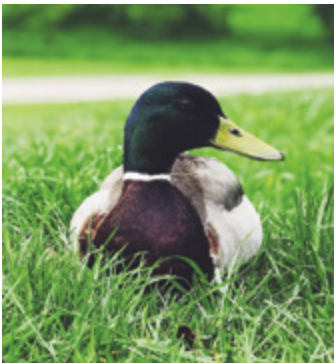
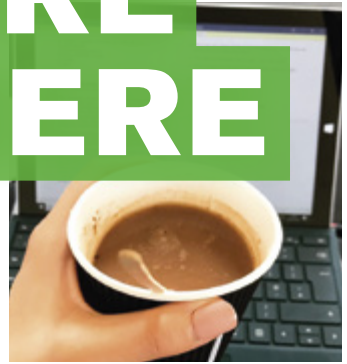
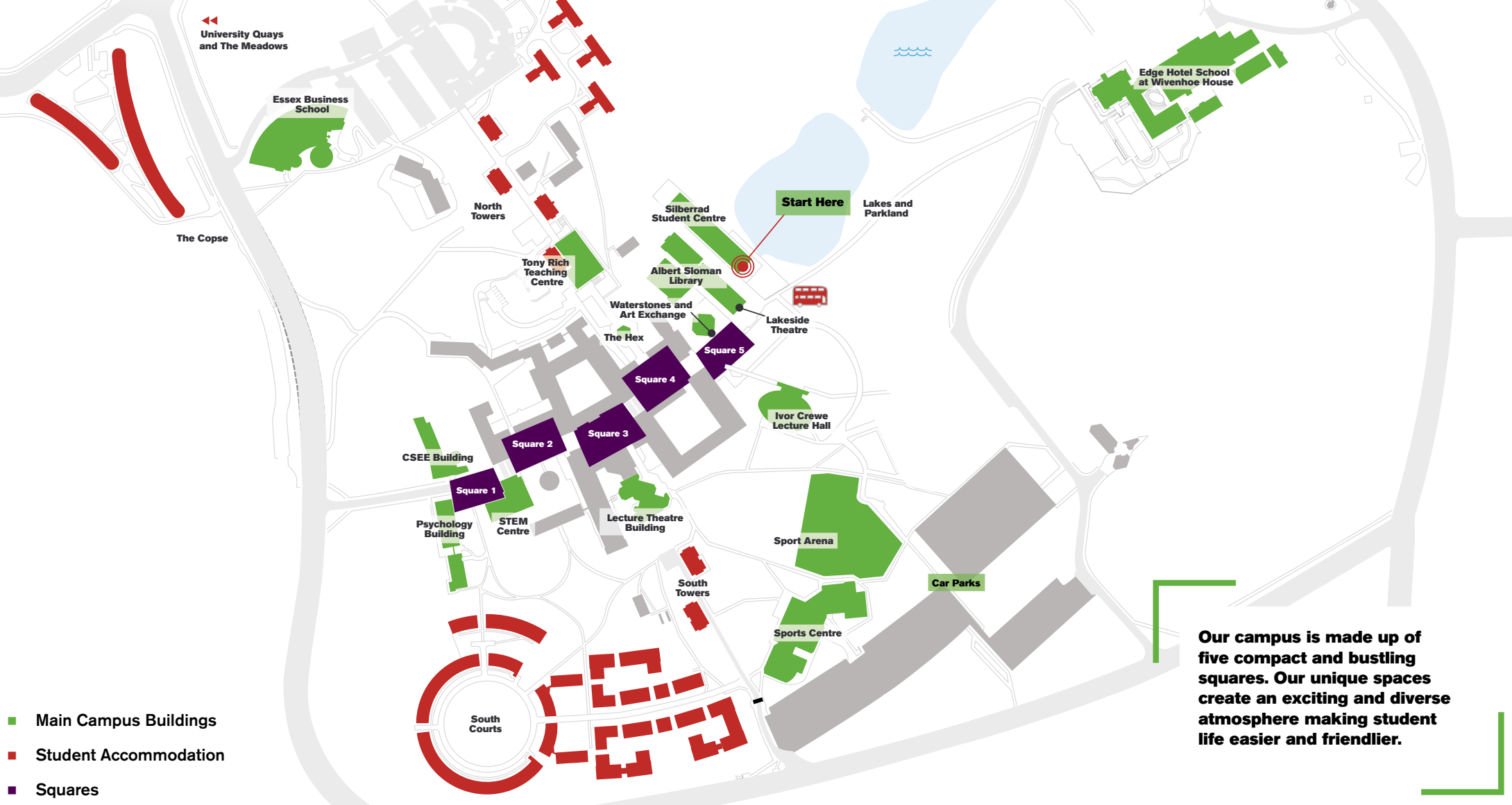




YOUR ADVENTURE STARTS HERE



WELCOME TO OUR COLCHESTER CAMPUS

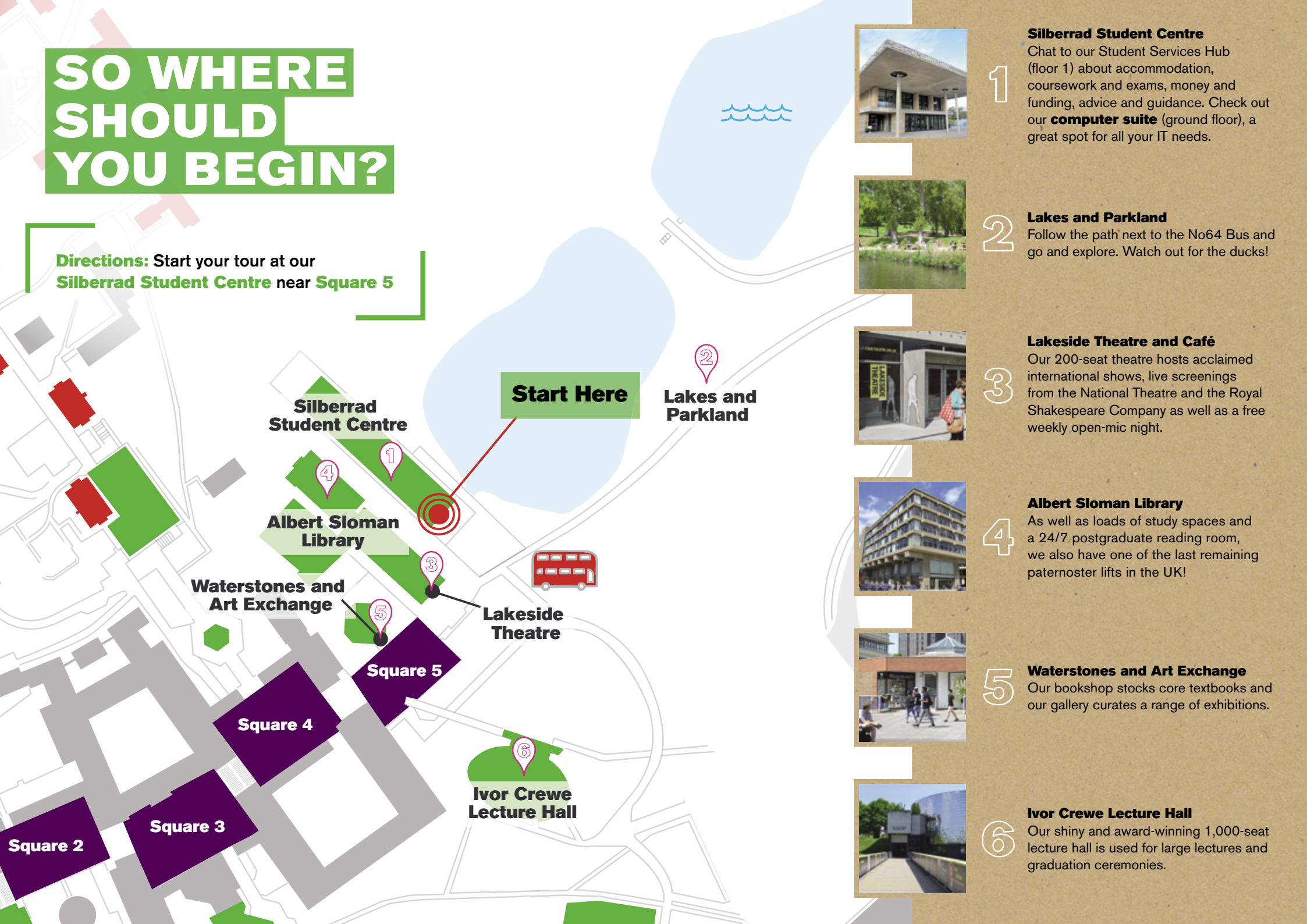


Our campus is made up of five compact and bustling squares. Our unique spaces create an exciting and diverse atmosphere making student life easier and friendlier.

- Main Campus Buildings
- Student Accommodation
- Squares

SO WHERE SHOULD YOU BEGIN?

Directions: Start your tour at our **Silberrad Student Centre** near **Square 5**



1



Silberrad Student Centre
Chat to our Student Services Hub (floor 1) about accommodation, coursework and exams, money and funding, advice and guidance. Check out our **computer suite** (ground floor), a great spot for all your IT needs.

2



Lakes and Parkland
Follow the path next to the No64 Bus and go and explore. Watch out for the ducks!

3



Lakeside Theatre and Café
Our 200-seat theatre hosts acclaimed international shows, live screenings from the National Theatre and the Royal Shakespeare Company as well as a free weekly open-mic night.

4



Albert Sloman Library
As well as loads of study spaces and a 24/7 postgraduate reading room, we also have one of the last remaining paternoster lifts in the UK!

5



Waterstones and Art Exchange
Our bookshop stocks core textbooks and our gallery curates a range of exhibitions.

6



Ivor Crewe Lecture Hall
Our shiny and award-winning 1,000-seat lecture hall is used for large lectures and graduation ceremonies.

MOVING INTO THE HEART OF CAMPUS

Directions: Go back along the **Ivor Crewe Lecture Hall** bridge and go under the archway to your left into **Square 4**

Essex Business School

The Houses

North Towers

Tony Rich Teaching Centre

Waterstones and Art Exchange

The Hex

Square 4

Square 2

Square 3

Silberrad Student Centre

Albert Sloman Library

Square 5

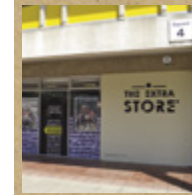
Ivor Crewe Lecture Hall



1

The Store

Our on campus convenience shop and the place to get everything you need for dinner.



2

The Extra Store

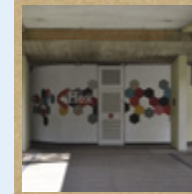
The perfect place to grab your lunch on the go.



3

Post Office

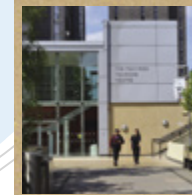
To the right of The Store is our Post Office so you can easily keep in touch with friends and family.



4

Directions

Go through the archway next to the Copy Centre and walk past the Hex and launderette.



5

Tony Rich Teaching Centre

A popular destination for small lectures and seminars. You'll often find Campus Cat here!



6

Directions

Take a stroll past our North Towers and Houses accommodation. Beyond this is our amazing Essex Business School.



7

Essex Business School

Our zero-carbon, business school boasts additional seminar and lecture rooms as well as study and innovation pods.

THIS IS WHERE THE FUN STARTS

Directions: From **The Store** on Square 4, head down the main steps into **Square 3** – the centre of campus!



1

Students' Union

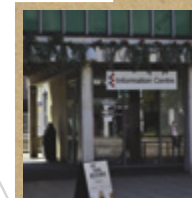
The hub of student life on campus. Home to the **SU Bar, Base Bar & Club, SU Reception, SU Homes, SU Advice** and **Salon**.



2

Information Centre

To the right of the SU is our Information Centre and 24-hour security team.



3

Directions

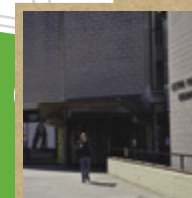
Walk past the Information Centre to find our Lecture Theatre Building and Sports Centre and Arena (if you walk all the way up the hill!)



4

Lecture Theatre Building & Cine10

Each lecture theatre contains all the latest equipment and Cine10 shows a range of films (old and new). It's a student cinema with student prices.



5

Sports Centre

Home to our gym and activity studios, climbing wall, squash courts and table tennis tables.



Sport Arena

Our brand new £12m Sport Arena offers international standard sporting facilities, with seating for 1,655 spectators.

Sports Centre

Sport Arena

Lecture Theatre Building

Ivor Crewe Lecture Hall

Square 5

Square 4

Square 3

Square 2

Square 1

South Towers

WE'RE ALMOST AT THE END OF YOUR TOUR

Directions: From **Square 3** head down into **Squares 2 and 1**, passing our popular eatery Zest fresh on the way.

CSEE Building

Psychology Building

STEM Centre

Square 2

Square 3

Square 4



1

Employability and Careers Centre

We have expert advisers who offer guidance on careers, job applications, interview preparation, and much more.

Essex Abroad

At Essex, undergraduate students can often do a placement year or a year abroad as part of their course.

2

STEM Centre

Our new state-of-the-art £13.7m teaching centre for science, technology, engineering and maths (STEM) students.

3

CSEE

Our School of Computer Science and Electronic Engineering (CSEE) has exceptional laboratories.

4

Psychology

Our purpose built psychology facility has dedicated labs, suites and classrooms.

OUR ACCOMMODATION

Unfortunately if you're on a self-guided tour you won't be able to have a look inside our accommodation, but feel free to stroll past and take a look outside.

We have lots of photos and videos of our accommodation online, or if you'd like to be shown inside by one of our Student Ambassadors, please contact us to arrange a guided tour.

E tours@essex.ac.uk



THE QUAYS from £133.49*

Just a 15-minute walk from the centre of campus, our flats contain eight rooms, each with their own en suite bathroom.

Why?

With amazing views of the river, and a short walk from Dominos and Tesco, The Quays are a fantastic social hub.



THE MEADOWS Ensuite: £147.63* Townhouse: £140.63*

Situated between campus and Tesco, and roughly a ten-minute walk from both.

Why?

The Townhouses have up to twelve bedrooms with shared bathroom facilities and the flats have between five and seven en suite bedrooms – so take your pick!



THE HOUSES from £130.55*

Located by our beautiful parkland, each flat typically has five bedrooms and is just five minutes away from the centre of campus.

Why?

Ideal if you're looking for a quieter living space and your own bathroom. Whether you fancy a night in or a night out on campus, The Houses are a perfect home.

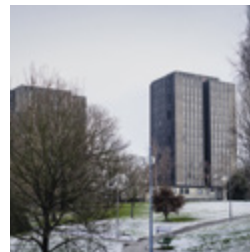


NORTH TOWERS £93.87*

Based on the north side of campus just one minute away from our Tony Rich Teaching Centre.

Why?

On average, each flat contains 14 bedrooms and shared bathrooms. Our North Towers are the social hubs of campus where you can get stuck into student life.



SOUTH TOWERS £81.83*

Situated near the centre of campus, just a three-minute walk from your seminar or lecture room.

Why?

On average, each flat contains 16 bedrooms and shared bathrooms, so if you're looking to live in a social environment where you'll receive the opportunity to get to know lots of people...welcome home.



SOUTH COURTS £144.13*

Just a five-minute walk from the centre of campus, you can afford to hit the snooze button in the morning!

Why?

A typical South Courts flat has up to six bedrooms, each with an en suite bathroom – plenty of space to lounge about and have a little *you* time. South Courts is a popular choice for many of our undergraduate students.



THE COPSE from £153.58*

Our brand new accommodation featuring 643 single ensuite rooms and studios. Nestled between The Meadows and the Essex Business School, it's only a nine-minute walk from all the central campus facilities.

Why?

With an onsite launderette and a social pavilion with a common room and grab and go café just a short walk away, The Copse has everything covered!

Visit our accommodation web pages to find out more.

► **www.essex.ac.uk/accommodation**

*These costs are per week and are based on 2018-19 amounts. Up-to-date costs can be found online.

FANCY A BITE TO EAT?



Your tour doesn't have to end here. Why not check out one of our many bars, restaurants and cafés?

SQUARE 1

Bytes

Great for salad bowls and wraps.

SQUARE 3

Canteen

Good for traditional home-cooked food.

Crumbs

Good for a sweet treat and coffee on the go.

Crust

Good for freshly made sub rolls, pastries and pies.

SU Bar

Good for nachos, chips and burgers.

The Kitchen

Good for coffee and doughnuts.

Zest fresh

Good for flatbreads and paninis.

MOA

Good for spicy chicken.

SQUARE 4

Blues

Good for salads and vegan/vegetarian stews.

Buffalo Joe's

Good for Southern fried butter milk chicken and healthy chargrilled burgers.

Fusion Grill

Good for gourmet burgers, skewers and steaks.

Top Bar

Good for a chilled out drink.

Street Food Huts

The Vegan Greek, Fusion Wok and The Oven.

AROUND CAMPUS

Bonds (Essex Business School)

Good for sandwiches and wraps.

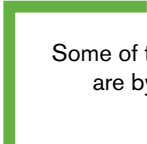
Cantina (No64 bus)

Good for quick and tasty Mexican food on the go.

SQUARE 5

Lakeside Theatre Café

Good for soups and stews.



Some of the images used in this guide
are by our wonderful students.

@ajrphotographer

@akramkuban

@amybreadmore

@angel4tonight

@choobean

@cncsnapthemoment

@danfury17

@dom_bash

@dotshiiki


@harrylo253

@kjerstibrovold

@rayssinha143


@saffyyyy

@scuzelove



We hope you enjoyed your tour of our Colchester Campus. If you would like any more information, or have any questions about any aspect of applying to Essex, please get in touch.

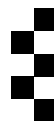
 /uniofessex

 /Uni_of_Essex

 @uniessex

 admit@essex.ac.uk

www.essex.ac.uk



University of Essex